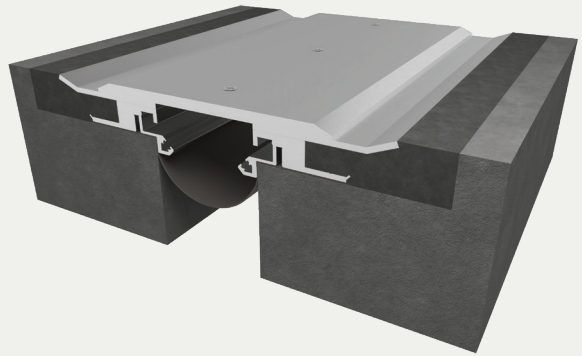


Seismic Aluminum Heavy-Duty Flooring System

RECESSED BLOCKOUT APPLICATION (PTX/PTXw)



BENEFITS

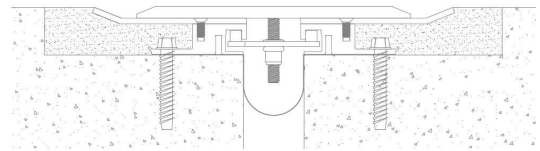
- HEAVY-DUTY** Engineered for wide joint openings requiring heavy loads and multi-directional movement
- FLUSH TO SURFACE** Designed with a smooth transition from deck to substrate

DETAILS

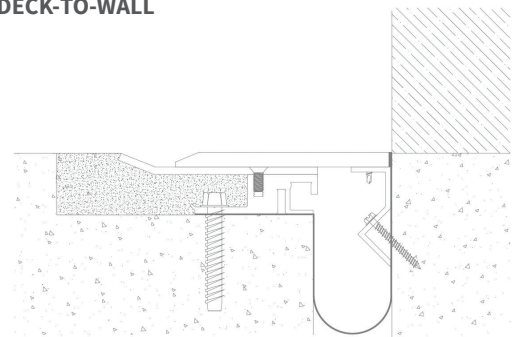
- MATERIAL**
 - 6063-T5 and 6061-T6 Aluminum, Meets ASTM B221 and ASTM B209
 - 5052-H32 Aluminum, Meets ASTM B209
- FINISH** Mill
- MOVEMENT**
 - Thermal: Horizontal
 - Seismic
- MOUNTING** Blockout
- JOINT SIZE** 2 inches to 12 inches
- LENGTH** 10 Linear Feet
- APPLICATION** Exterior
- LOAD** Vehicular
- INSTALLATION** Floor or Deck
- OPTIONS** Fire Barrier, Additional material options available upon request.

INSTALLATION

DECK-TO-DECK



DECK-TO-WALL



For more information, download our Installation and Operating Manuals (IOM) and Shop Drawings on Nystrom.com

ORDER GUIDE

MODEL	APPLICATION	JOINT SIZE AT MEAN T°F	EXPOSED SIGHT LINE	TOTAL MOVEMENT
EJN-PTX-200	Deck to Deck	2" (51mm)	11.75" (298mm)	2" (51mm)
EJN-PTX-400	Deck to Deck	4" (102mm)	12.50" (318mm)	4" (102mm)
EJN-PTX-600	Deck to Deck	6" (152mm)	15.75" (400mm)	6" (152mm)
EJN-PTX-800	Deck to Deck	8" (203mm)	20.37" (518mm)	8" (203mm)
EJN-PTX-1000	Deck to Deck	10" (254mm)	24.50" (622mm)	10" (254mm)
EJN-PTX-1200	Deck to Deck	12" (305mm)	28.50" (724mm)	12" (305mm)
EJN-PTX-200W	Deck to Wall	2" (51mm)	6.87" (175mm)	1" (25mm)
EJN-PTX-400W	Deck to Wall	4" (102mm)	8.25" (210mm)	2" (51mm)
EJN-PTX-600W	Deck to Wall	6" (152mm)	10.87" (276mm)	3" (76mm)
EJN-PTX-800W	Deck to Wall	8" (203mm)	14.12" (359mm)	4" (102mm)
EJN-PTX-1000W	Deck to Wall	10" (254mm)	17.25" (438mm)	5" (127mm)
EJN-PTX-1200W	Deck to Wall	12" (305mm)	20.25" (514mm)	6" (152mm)

Additional options available, email info@nystrom.com for more information.