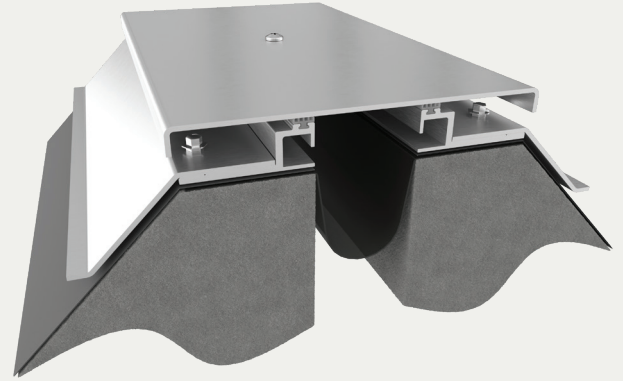


Seismic Aluminum Roof System

CANT APPLICATION (RJF/RJFw)



BENEFITS

INTEGRATED FLASHING System includes flashing for time-saving installation over typical cant conditions.

SEISMIC MOVEMENT Designed with a self-centering bar to keep the system centered during multi-directional movement.

DETAILS

MATERIAL Aluminum 6061

FINISH Mill

MOVEMENT

Thermal: Horizontal and Vertical

Seismic: Lateral Shear

MOUNTING Surface

JOINT SIZE 2 Inches to 12 Inches

LENGTH 10 Linear Feet

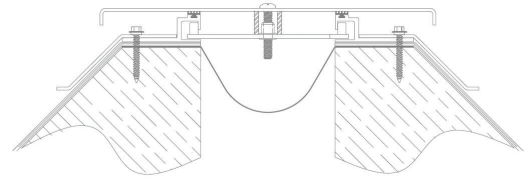
APPLICATION Exterior

INSTALLATION Roof

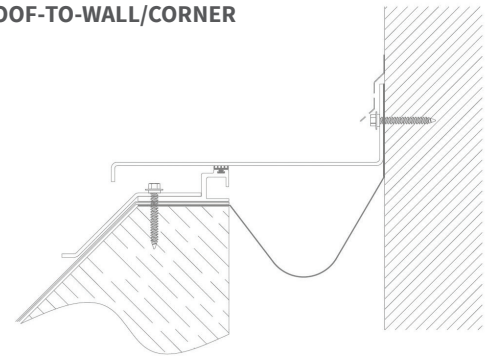
OPTIONS Fire barrier, Additional Materials, Sizes and Finishes available upon request

INSTALLATION

ROOF-TO-ROOF



ROOF-TO-WALL/CORNER



For more information, download our Installation and Operating Manuals (IOM) and Shop Drawings on nystrom.com

ORDER GUIDE

MODEL	APPLICATION	JOINT SIZE AT MEAN T°F	EXPOSED SIGHT LINE	TOTAL MOVEMENT
EJN-RJF-200	Roof to Roof	2" (51mm)	7"+ (178mm)	2" (51mm)
EJN-RJF-400	Roof to Roof	4" (102mm)	10"+ (255mm)	4" (102mm)
EJN-RJF-600	Roof to Roof	6" (152mm)	12"+ (305mm)	6" (152mm)
EJN-RJF-800	Roof to Roof	8" (203mm)	14"+ (356mm)	8" (203mm)
EJN-RJF-1000	Roof to Roof	10" (254mm)	17"+ (432mm)	10" (254mm)
EJN-RJF-1200	Roof to Roof	12" (305mm)	20"+ (508mm)	12" (305mm)
EJN-RJF-200W	Roof to Wall Corner	2" (51mm)	4.5"+ (114mm)	1" (25mm)
EJN-RJF-400W	Roof to Wall Corner	4" (102mm)	7"+ (178mm)	2" (51mm)
EJN-RJF-600W	Roof to Wall Corner	6" (152mm)	9"+ (228mm)	3" (76mm)
EJN-RJF-800W	Roof to Wall Corner	8" (203mm)	11"+ (280mm)	4" (102mm)
EJN-RJF-1000W	Roof to Wall Corner	10" (254mm)	13.5"+ (343mm)	5" (127mm)
EJN-RJF-1200W	Roof to Wall Corner	12" (305mm)	16"+ (406mm)	6" (152mm)

Additional options available, email info@nystrom.com for more information.