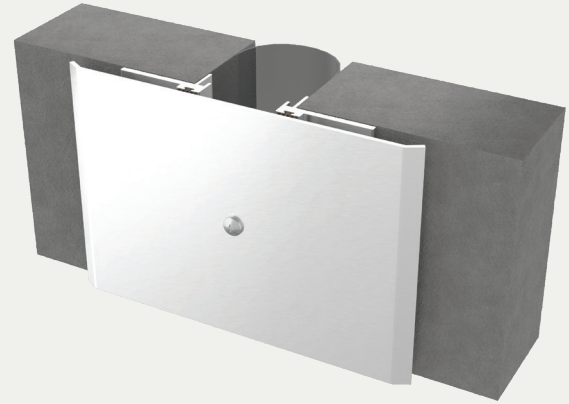


Seismic Aluminum Exterior Wall System

SURFACE MOUNT APPLICATION (RJX/RJXw)



BENEFITS

SEISMIC MOVEMENT System realigns itself with the self-centering bar, maintaining a safe, clean look.

WEATHER RESISTANT The combination of the cover plate and the moisture barrier ensures the elements are kept outside.

DETAILS

MATERIAL

- 6063-T5 Aluminum
- Meets ASTM B221 6061-T6 Aluminum
- Meets ASTM B209 5052 H32 Aluminum
- Meets ASTM B209

FINISH Clear Anodized

MOVEMENT

- Thermal: Horizontal and Vertical
- Seismic: Lateral Shear

MOUNTING Surface

JOINT SIZE 2 inches to 12 inches

LENGTH 10 Linear Feet

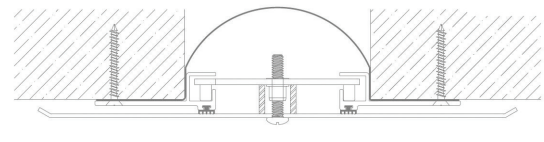
APPLICATION Exterior

INSTALLATION Wall or Ceiling

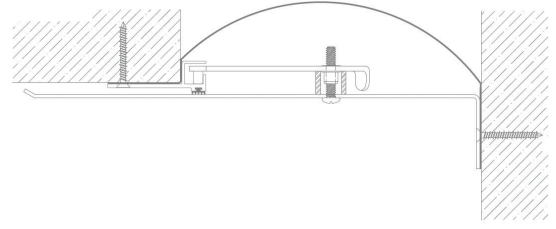
OPTIONS Fire Barrier, and Additional Materials, Sizes and Finishes Upon Request.

INSTALLATION

WALL/CEILING TO WALL/CEILING



WALL/CEILING TO CORNER



For more information, download our Installation and Operating Manuals (IOM) and Shop Drawings on Nystrom.com

ORDER GUIDE

MODEL	APPLICATION	JOINT SIZE AT MEAN T°F	EXPOSED SIGHT LINE	TOTAL MOVEMENT
EJN-RJX-200	Wall/Ceiling to Wall/Ceiling	2" (51mm)	7" (177mm)	2" (51mm)
EJN-RJX-400	Wall/Ceiling to Wall/Ceiling	4" (102mm)	10.5" (267mm)	4" (102mm)
EJN-RJX-600	Wall/Ceiling to Wall/Ceiling	6" (152mm)	13.5" (343mm)	6" (152mm)
EJN-RJX-800	Wall/Ceiling to Wall/Ceiling	8" (203mm)	16.5" (419mm)	8" (203mm)
EJN-RJX-1000	Wall/Ceiling to Wall/Ceiling	10" (254mm)	19.5" (495mm)	10" (254mm)
EJN-RJX-1200	Wall/Ceiling to Wall/Ceiling	12" (305mm)	22.5" (572mm)	12" (305mm)
EJN-RJX-200W	Wall/Ceiling to Corner	2" (51mm)	4.5" (114mm)	1" (25mm)
EJN-RJX-400W	Wall/Ceiling to Corner	4" (102mm)	7.25" (184mm)	2" (51mm)
EJN-RJX-600W	Wall/Ceiling to Corner	6" (152mm)	9.75" (248mm)	3" (76mm)
EJN-RJX-800W	Wall/Ceiling to Corner	8" (203mm)	12.25" (311mm)	4" (102mm)
EJN-RJX-1000W	Wall/Ceiling to Corner	10" (254mm)	14.75" (375mm)	5" (127mm)
EJN-RJX-1200W	Wall/Ceiling to Corner	12" (305mm)	17.25" (438mm)	6" (152mm)

Additional options available, email info@nystrom.com for more information.