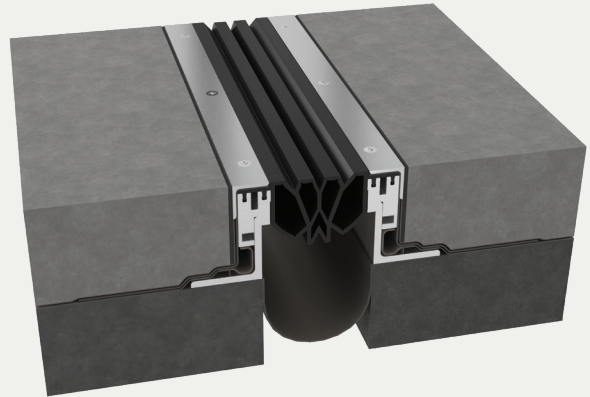


Seismic Exterior Plaza System

TOPPING SLAB DECK APPLICATION (TSS/TSSw)



BENEFITS

CONTINUOUS SEAL Watertight system utilizes flashing sheet that integrates into hot or cold applied deck waterproofing systems

FLEXIBLE Leg height adjusts to accommodate pavers, topping slabs and other surfaces

DETAILS

MATERIAL 6063-T6 Aluminum, Meets ASTM B209

FINISH Black

MOVEMENT

- Thermal: Horizontal
- Seismic

MOUNTING Surface

JOINT SIZE 2 Inches to 4 Inches

LENGTH 10 Linear Feet

APPLICATION Exterior

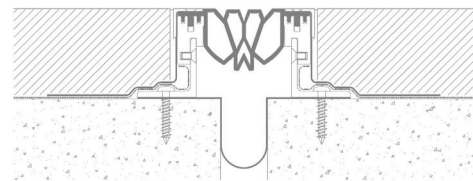
LOAD Vehicular and Pedestrian

INSTALLATION Floor or Deck

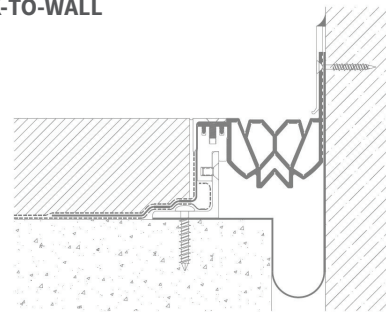
OPTIONS Fire Barrier, Custom Seal Configurations and Cover Plate Available

INSTALLATION

DECK-TO-DECK



DECK-TO-WALL



For more information, download our Installation and Operating Manuals (IOM) and Shop Drawings on Nystrom.com

ORDER GUIDE

| MODEL | APPLICATION | JOINT SIZE AT MEAN T°F | EXPOSED SIGHT LINE | TOPPING SLAB HEIGHT | TOTAL MOVEMENT |
|--------------|--------------|------------------------|--------------------|---------------------|----------------|
| EJN-TSS-200 | Deck to Deck | 2" (25mm) | 6" (152mm) | Varies | 3.75" (95mm) |
| EJN-TSS-300 | Deck to Deck | 3" (76mm) | 6" (152mm) | Varies | 3.75" (95mm) |
| EJN-TSS-400 | Deck to Deck | 4" (102mm) | 6" (152mm) | Varies | 3.75" (95mm) |
| EJN-TSS-200W | Deck to Wall | 2" (25mm) | 5" (126mm) | Varies | 3.75" (95mm) |
| EJN-TSS-300W | Deck to Wall | 3" (76mm) | 5" (126mm) | Varies | 3.75" (95mm) |
| EJN-TSS-400W | Deck to Wall | 4" (102mm) | 5" (126mm) | Varies | 3.75" (95mm) |

Additional options available, email info@nystrom.com for more information.