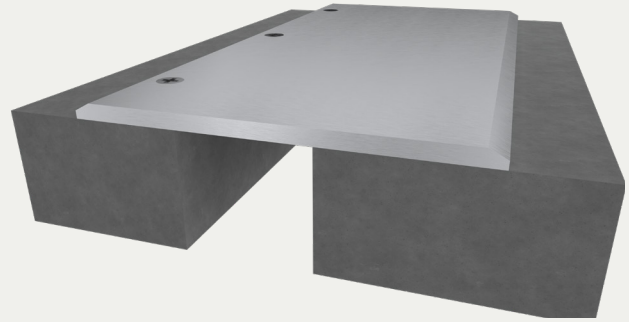


# Aluminum Flooring System

## SURFACE APPLICATION (DT/DTw)



### BENEFITS

**ADA COMPLIANT** Beveled edges provide a smooth, ADA-compliant transition.

**EASY INSTALLATION** Surface mount – no block out required. Simply attach to substrate with appropriate anchors.

### DETAILS

**MATERIAL** 6061-T6 and 5052 Aluminum, Meets ASTM B221 and ASTM B209

**FINISH** Mill

**MOVEMENT** Thermal: Horizontal

**MOUNTING** Surface

**JOINT SIZE** 1 inch to 6 inches

**LENGTH** 10 Linear Feet

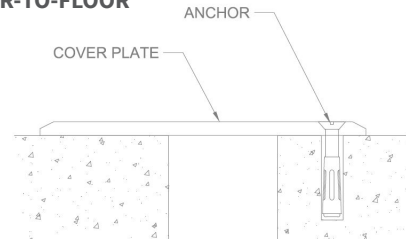
**LOAD** Pedestrian and Light Cart

**INSTALLATION** Floor

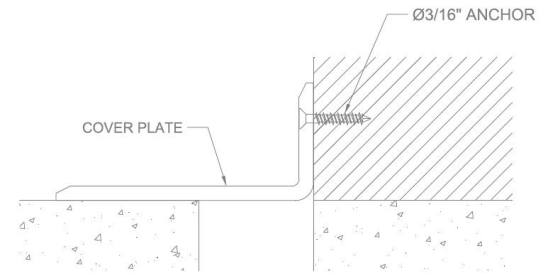
**OPTIONS** Moisture Barrier, Fire Barrier, Additional material options available upon request.

### INSTALLATION

#### FLOOR-TO-FLOOR



#### FLOOR-TO-WALL/CORNER



For more information, download our Installation and Operating Manuals (IOM) and Shop Drawings on [Nystrom.com](http://Nystrom.com)

### ORDER GUIDE

MODEL	APPLICATION	JOINT SIZE AT MEAN T°F	EXPOSED SIGHT LINE	TOTAL MOVEMENT
EJN-DT-100	Floor to Floor	1" (25mm)	4" (102mm)	2" (51mm)
EJN-DT-200	Floor to Floor	2" (51mm)	6" (152mm)	4" (102mm)
EJN-DT-300	Floor to Floor	3" (76mm)	8" (203mm)	6" (152mm)
EJN-DT-400	Floor to Floor	4" (102mm)	10" (254mm)	8" (203mm)
EJN-DT-600	Floor to Floor	6" (152mm)	14" (356mm)	12" (305mm)
EJN-DT-100w	Floor to Wall	1" (25mm)	2.5" (64mm)	2" (51mm)
EJN-DT-200w	Floor to Wall	2" (51mm)	4.5" (114mm)	4" (102mm)
EJN-DT-300w	Floor to Wall	3" (76mm)	6.5" (165mm)	6" (152mm)
EJN-DT-400w	Floor to Wall	4" (102mm)	8.5" (216mm)	8" (203mm)
EJN-DT-600w	Floor to Wall	6" (152mm)	12.5" (318mm)	12" (305mm)

Additional options available, email [info@nystrom.com](mailto:info@nystrom.com) for more information.