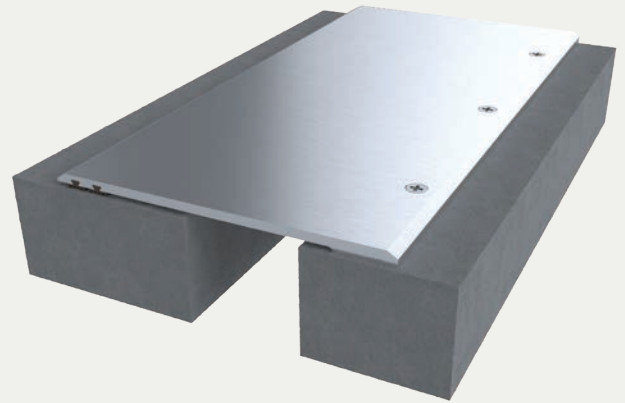


Aluminum Gym Flooring System

SURFACE APPLICATION (DTG)

BENEFITS

- SOUND DAMPENING** Ideal for gymnasium floors; features two gaskets to dampen sound in high-pedestrian traffic applications.
- EASY INSTALLATION** Easily installs on floor surface, directly to the substrate without the preformed blockout requirements.
- ADA COMPLIANT** Beveled edges provide a smooth, ADA-compliant transition.

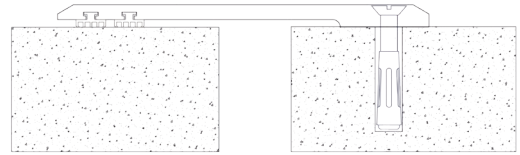


DETAILS

- MATERIAL** 6063-T6 Aluminum, Meets ASTM B221
- FINISH** Mill
- MOVEMENT** Thermal: Horizontal
- MOUNTING** Surface
- JOINT SIZE** 1 inch and 2 inches
- LENGTH** 10 Linear Feet
- LOAD** Pedestrian and Light Cart
- INSTALLATION** Floor
- OPTIONS** Moisture barrier, Fire barrier, Additional Materials, Sizes and Finishes available upon request

INSTALLATION

FLOOR-TO-FLOOR



For more information, download our Installation and Operating Manuals (IOM) and Shop Drawings on nystrom.com

ORDER GUIDE

MODEL	APPLICATION	JOINT SIZE AT MEAN T°F	EXPOSED SIGHT LINE	TOTAL MOVEMENT
EJN-DTG-100	Surface	1" (25mm)	4.18" (107mm)	1" (25mm)
EJN-DTG-200	Surface	2" (51mm)	6" (153mm)	2" (51mm)

Additional options available, email info@nystrom.com for more information.