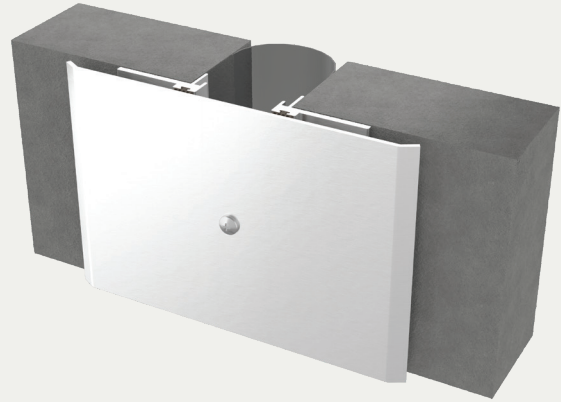


# Seismic Architectural WALL SYSTEM (FCT/FCTw)



## BENEFITS

- SEISMIC CENTERING BAR** System realigns itself with the self-centering bar, maintaining a finished appearance.
- ARCHITECTURAL ELEGANCE** The clear anodized cover plate finish provides a high-end appearance.

## DETAILS

### MATERIAL

6063-T5 Aluminum, Meets ASTM B221  
 6061-T6 Aluminum, Meets ASTM B209  
 5052 H32 Aluminum, Meets ASTM B209

**FINISH** Clear Anodized

### MOVEMENT

- Thermal: Horizontal and Vertical
- Seismic: Lateral Shear

**MOUNTING** Surface

**JOINT SIZE** 2 inches to 12 inches

**LENGTH** 10 Linear Feet

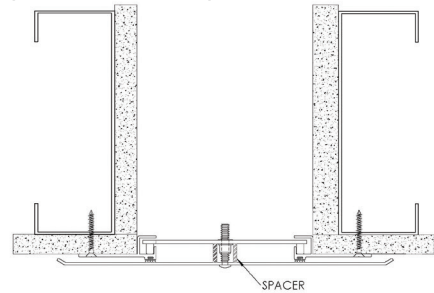
**APPLICATION** Interior

**INSTALLATION** Wall or Ceiling

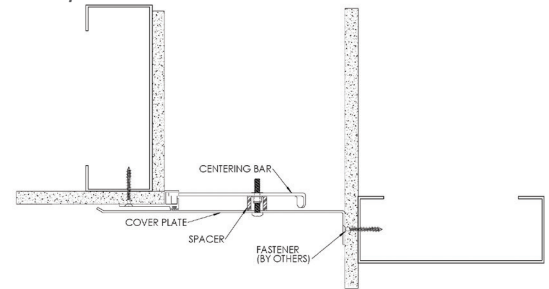
**OPTIONS** Moisture Barrier, Fire Barrier, and Additional Materials, Sizes and Finishes Upon Request

## INSTALLATION

### WALL/CEILING-TO-WALL/CEILING



### WALL/CEILING TO CORNER



AS BUILT CONDITIONS MAY VARY. For more information, download our Installation and Operating Manuals (IOM) and Shop Drawings on [Nystrom.com](http://Nystrom.com)

## ORDER GUIDE

MODEL	APPLICATION	JOINT SIZE AT MEAN T°F	EXPOSED SIGHT LINE	TOTAL MOVEMENT
EJN-FCT-200	Wall/Ceiling to Wall/Ceiling	2" (51mm)	7" (177mm)	2" (51mm)
EJN-FCT-400	Wall/Ceiling to Wall/Ceiling	4" (102mm)	10.5" (267mm)	4" (102mm)
EJN-FCT-600	Wall/Ceiling to Wall/Ceiling	6" (152mm)	13.5" (343mm)	6" (152mm)
EJN-FCT-800	Wall/Ceiling to Wall/Ceiling	8" (203mm)	16.5" (419mm)	8" (203mm)
EJN-FCT-1000	Wall/Ceiling to Wall/Ceiling	10" (254mm)	19.5" (495mm)	10" (254mm)
EJN-FCT-1200	Wall/Ceiling to Wall/Ceiling	12" (305mm)	22.5" (572mm)	12" (305mm)
EJN-FCT-200W	Wall/Ceiling to Corner	2" (51mm)	4.5" (114mm)	1" (25mm)
EJN-FCT-400W	Wall/Ceiling to Corner	4" (102mm)	7.25" (184mm)	2" (51mm)
EJN-FCT-600W	Wall/Ceiling to Corner	6" (152mm)	9.75" (248mm)	3" (76mm)
EJN-FCT-800W	Wall/Ceiling to Corner	8" (203mm)	12.25" (311mm)	4" (102mm)
EJN-FCT-1000W	Wall/Ceiling to Corner	10" (254mm)	14.75" (375mm)	5" (127mm)
EJN-FCT-1200W	Wall/Ceiling to Corner	12" (305mm)	17.25" (438mm)	6" (152mm)

Additional options available, email [info@nystrom.com](mailto:info@nystrom.com) for more information.