



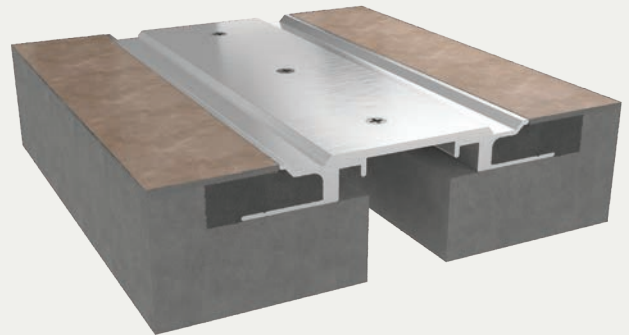
Seismic Aluminum Flooring System

RECESSED BLOCKOUT APPLICATION (SFG/SFGw)

BENEFITS

SEISMIC TECHNOLOGY The cover plate stays centered over openings before, during and after a seismic event with the use of the seismic centering bar.

ADA COMPLIANT Heavy pedestrian traffic requirements are met while maintaining an ADA Compliant transition.



DETAILS

MATERIAL

6063-T5 Aluminum, Meets ASTM B221 and B209
6061-T6 Aluminum, Meets ASTM B221 and B209
5052 H32 Aluminum, Meets ASTM B221 and B209

FINISH Mill

MOVEMENT

Thermal: Horizontal and Vertical
Seismic: Lateral Shear

MOUNTING Block Out

JOINT SIZE 2 inches to 12 inches

LENGTH 10 Linear Feet

APPLICATION Interior

LOAD Pedestrian and Light Cart

INSTALLATION Floor

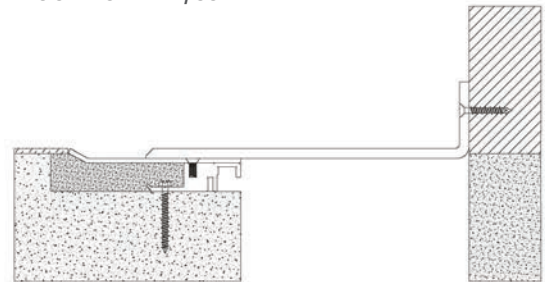
OPTIONS Moisture barrier, Fire barrier, Additional Materials, Sizes and Finishes available upon request

INSTALLATION

FLOOR-TO-FLOOR



FLOOR-TO-WALL/CORNER



For more information, download our Installation and Operating Manuals (IOM) and Shop Drawings on nystrom.com

ORDER GUIDE

MODEL	APPLICATION	JOINT SIZE AT MEAN T°F	EXPOSED SIGHT LINE	TOTAL MOVEMENT
EJN-SFG-200	Floor to Floor	2" (51mm)	6" (152mm)	2" (51mm)
EJN-SFG-400	Floor to Floor	4" (102mm)	8.87" (225mm)	4" (102mm)
EJN-SFG-600	Floor to Floor	6" (152mm)	15" (382mm)	6" (152mm)
EJN-SFG-800	Floor to Floor	8" (203mm)	19" (483mm)	8" (203mm)
EJN-SFG-1000	Floor to Floor	10" (254mm)	23" (584mm)	10" (254mm)
EJN-SFG-1200	Floor to Floor	12" (305mm)	27" (686mm)	12" (305mm)
EJN-SFG-200W	Floor to Wall	2" (51mm)	4" (102mm)	1" (25mm)
EJN-SFG-400W	Floor to Wall	4" (102mm)	6.44" (164mm)	2" (51mm)
EJN-SFG-600W	Floor to Wall	6" (152mm)	10.5" (267mm)	3" (76mm)
EJN-SFG-800W	Floor to Wall	8" (203mm)	13.5" (343mm)	4" (102mm)
EJN-SFG-1000W	Floor to Wall	10" (254mm)	16.5" (419mm)	5" (127mm)
EJN-SFG-1200W	Floor to Wall	12" (305mm)	19.5" (495mm)	6" (152mm)

Additional options available, email info@nystrom.com for more information.