

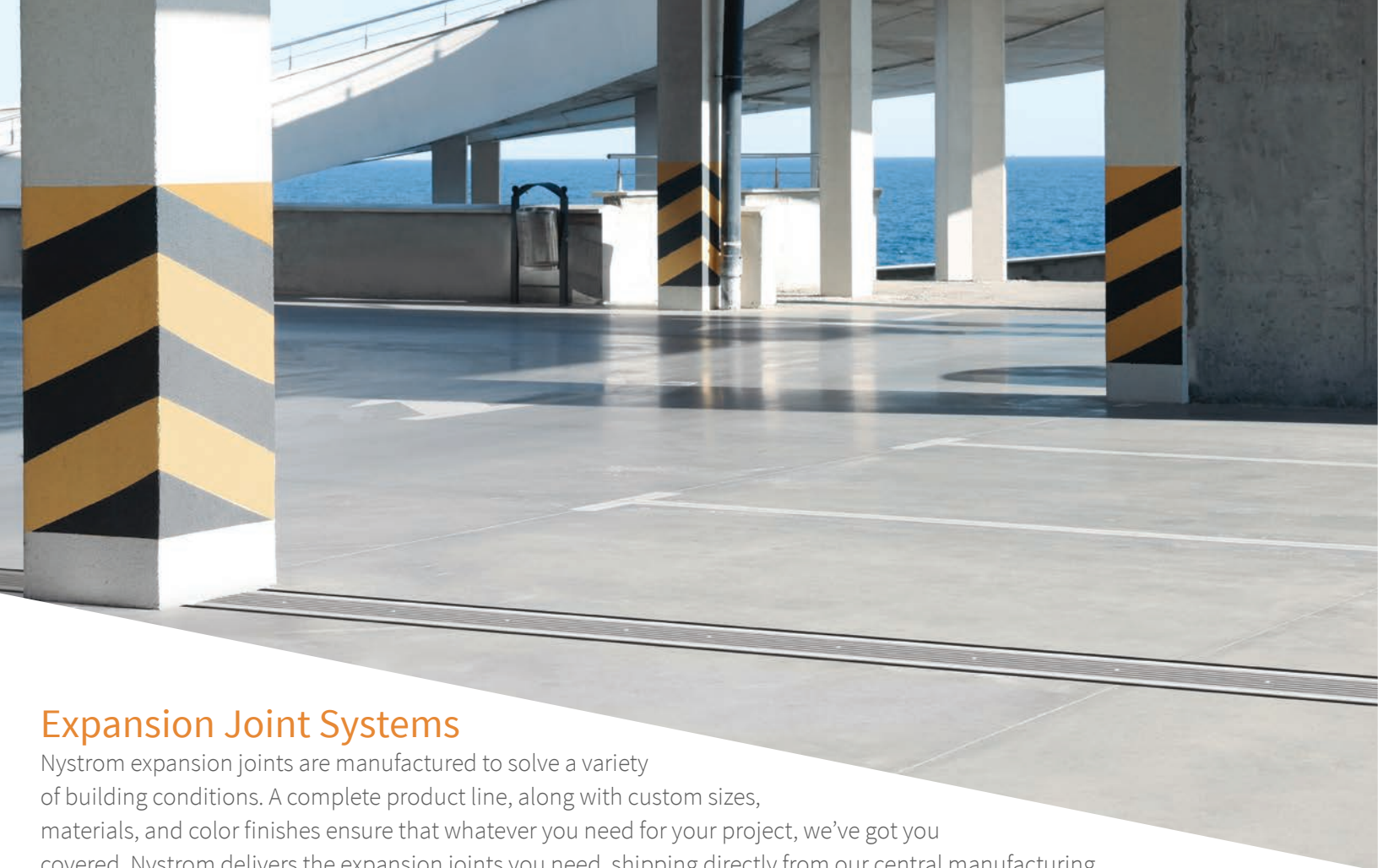


Direct Service Done Right



07 9100 + 07 9500

Expansion Joint Systems
Catalog



Expansion Joint Systems

Nystrom expansion joints are manufactured to solve a variety of building conditions. A complete product line, along with custom sizes, materials, and color finishes ensure that whatever you need for your project, we've got you covered. Nystrom delivers the expansion joints you need, shipping directly from our central manufacturing facility or one of our local stocking warehouses.

FLOOR SYSTEMS 5

Architectural Metals	6-19
Elastomeric Seals	20-23

WALL & CEILING SYSTEMS 24

Architectural Metals	25-28
Elastomeric Seals	29-36

EXTERIOR SYSTEMS 37

Architectural Metals	38-39
Elastomeric Seals	40

PARKING SYSTEMS 41

Architectural Metals	42-45
Elastomeric Seals	46
JointCrete™	47

MOISTURE BARRIER 48

SEAL SYSTEMS 50

Pre-Compressed	51-59
Non-Precompressed	60-62

ROOF SYSTEMS 63

Architectural Metals	64-65
Bellows	66-68

FIRE BARRIER 69

Seismic	70-71
---------	-------

PRODUCT INDEX

Model	Page	Model	Page	Model	Page
DA	7	JointCrete™	47	PTS/PTSw	43
DOT	55	LCA/LCAw	32	PTX/PTXw	42
DT/DTw	9	LCD/LCDw	34	QTT	56
DTG	10	LCE/LCEw	36	RCP	45
ECF/ECFw	67	LCF/LCFw	20	RJE/RJEw	39
EEJ/EEJw	66	LCFC/LCFCw	22	RJI/RJIw	28
ESH	61	LCFS/LCFSw	21	RJF/RJFw	65
ESU	60	LCFT/LCFTw	23	RJS/RJSw	64
ESV	62	LCH/LCHw	33	RJX/RJXw	38
EWCF/EWCFw	68	LCS/LCSw	35	SA	6
EWN/EWNw	40	LCW/LCWw	30	SES	51
FA/FAw	8	LCWF/LCWFw	29	SFB/SFBw	15
FCT/FCTw	26	LCWS/LCWSw	31	SFC/SFCw	12
FES	57	NBF/NBFw	19	SFE/SFEw	11
FHES	58	NBR/NBRw	18	SFG/SFGw	13
FLF/FLFw	70	NBW/NBWw	27	SFP/SFPw	16
FLP/FLPw	17	PBF	59	UGS/BGS/RGS	49
FLW/FLWw	71	PD/PDw	44	WJ/WJw	25
HES	52	PDM	53	WS/WSw	46
		PDX	54		



Direct Service Done Right

EXPANSION JOINT SYSTEMS

Nystrom has a full line of expansion joint systems backed by 75 + years of Hassle-Free service that includes our team of customer-focused pros, as well as services and solutions tailored to support the needs of architects and contractors.

Experience Hassle-Free

Timely Delivery

The right product to the right place at the right time.

FLEXIBLE SCHEDULE DELIVERY

Our Minneapolis-based facility operates with an advanced autofill machine for swift order fulfillment.

STANDARD PRODUCT LEAD TIME

3-5 days.

Direct Access

Pros dedicated to end-to-end customer care.

SALES AND SERVICE

Save time with our dedicated team offering estimating, quoting, specification service, technical support, logistics assistance, and installation training.

COMMERCIAL BUILDING EXPERTISE

Our engineering team provides solutions for unique job requirements and our service team handles projects from takeoffs and bidding to timely product supply.

Specialized Support

Customized products, service-minded.

CUSTOM PRODUCTS AND SOLUTIONS

Nystrom specializes in offering personalized products and solutions tailored to your needs.

SERVICE YOUR WAY

Contact us for personal service, and go to nystrom.com for access to BIM, CAD, Shop Drawings and product information.

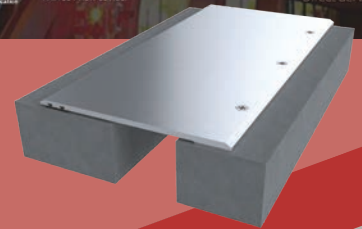
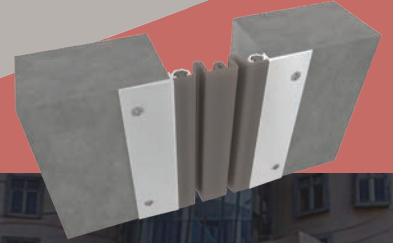
Choose Nystrom for hassle-free, customized solutions that prioritize your schedule and requirements.



CONTRACTOR TRAINING PROGRAM

HANDS-ON PRODUCT & INSTALLATION EDUCATION

Nystrom understands the issues faced by contractors. Our pros are committed to assisting you to become proficient with our products. Ask us about our contractor installation and best practices training programs.



CONTINUING EDUCATION

Nystrom is a registered provider offering quality learning in accordance with AIA/CES and Health/Safety/Welfare (HSW) criteria through scheduled continuing education webinars for Entrance Flooring, Expansion Joints, Luminous Egress, and Stair Nosings. Please visit our CEU Learning Center at nystrom.com to register for live webinars, schedule in-person lunch-and-learns, or complete an on-demand program.

CE WEBINAR: MANAGING BUILDING MOVEMENT WITH JOINTS

Provides an overview of how buildings move and information about building joints, forces, types, filler, and covers.

nystrom.com

EXPANSION JOINT SYSTEMS

FLOOR SYSTEMS

Pages 6-23

Architectural Metals 6-19

Elastomeric Seals 20-23

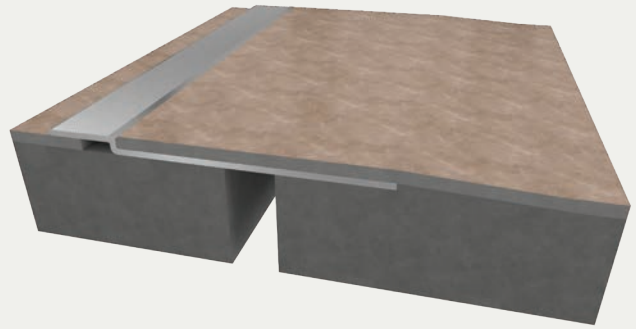
Aluminum Flooring System

SINGLE WING INFILL APPLICATION (SA)

BENEFITS

COORDINATE WITH FLOORING Seamless integration with existing VCT, carpet and tile flooring.

ADA COMPLIANT This system is not a trip hazard as the no bump design provides a finished flush floor transition.



DETAILS

MATERIAL 6063-T6 Aluminum, Meets ASTM B221

FINISH Mill

MOVEMENT Thermal: Horizontal

MOUNTING Surface

JOINT SIZE Up to 2 inches

LENGTH 10 Linear Feet

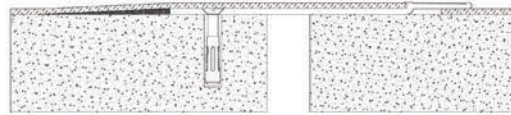
LOAD Pedestrian and Light Cart

INSTALLATION Floor

OPTIONS Moisture barrier, Fire barrier, Additional Materials, Sizes, and Finishes available upon request

INSTALLATION

SINGLE WING FLOORING INFILL SYSTEM



AS BUILT CONDITIONS MAY VARY. For more information, download our Installation and Operation Manuals (IOM) and Shop Drawings on nystrom.com

ORDER GUIDE

MODEL	APPLICATION	JOINT SIZE AT MEAN T°F	EXPOSED SIGHT LINE	INFILL HEIGHT	TOTAL MOVEMENT
EJN-SA150-125	Floor to Floor	2" (51mm)	1.5" (38mm)	0.125" (3mm)	1.25" (32mm)
EJN-SA150-250	Floor to Floor	2" (51mm)	1.5" (38mm)	0.25" (6mm)	1.25" (32mm)
EJN-SA150-375	Floor to Floor	2" (51mm)	1.5" (38mm)	0.375" (10mm)	1.25" (32mm)

Additional sizes available, email info@nystrom.com for more information.

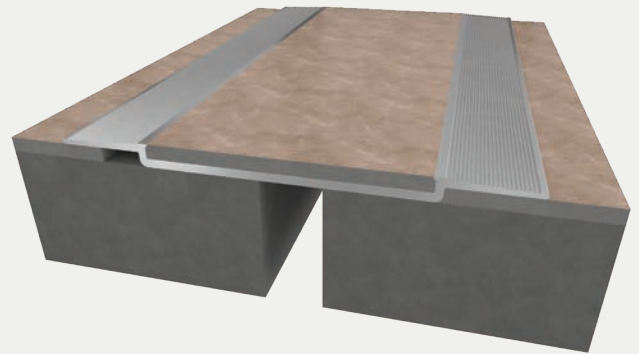
Aluminum Flooring System

DOUBLE WING INFILL APPLICATION (DA)

BENEFITS

COORDINATE WITH FLOORING Seamless integration with existing VCT, carpet and tile flooring.

ADA COMPLIANT This system is not a trip hazard as the no bump design provides a finished flush floor transition.



DETAILS

MATERIAL 6063-T6 Aluminum, Meets ASTM B221

FINISH Mill

MOVEMENT Thermal: Horizontal

MOUNTING Surface

JOINT SIZE Up to 2 inches

LENGTH 10 Linear Feet

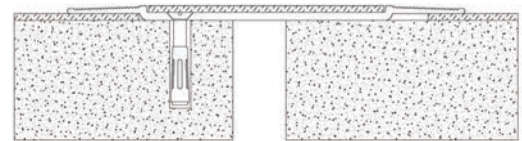
LOAD Pedestrian and Light Cart

INSTALLATION Floor

OPTIONS Moisture Barrier, Fire Barrier, Additional Materials, Sizes, and Finishes available upon request

INSTALLATION

DOUBLE WING FLOORING INFILL SYSTEM



AS BUILT CONDITIONS MAY VARY. For more information, download our Installation and Operation Manuals (IOM) and Shop Drawings on nystrom.com

ORDER GUIDE

MODEL	APPLICATION	JOINT SIZE AT MEAN T°F	EXPOSED SIGHT LINE	INFILL HEIGHT	TOTAL MOVEMENT
EJN-DA150-125	Floor to Floor	2" (51mm)	3" (76mm)	0.125" (3mm)	1.25" (32mm)
EJN-DA150-250	Floor to Floor	2" (51mm)	3" (76mm)	0.25" (6mm)	1.25" (32mm)
EJN-DA150-375	Floor to Floor	2" (51mm)	3" (76mm)	0.375" (10mm)	1.25" (32mm)

Additional sizes available, email info@nystrom.com for more information.

Aluminum Hinged Flooring System

SINGLE WING INFILL APPLICATION (FA/FAw)

BENEFITS

MINIMAL SIGHT LINE Integrates with floor material and handles substrate offset.

SURFACE MOUNT No blockout is required. Simply anchor to subfloor.



DETAILS

MATERIAL 6063-T5 Aluminum, Meets ASTM B221

FINISH Mill

MOVEMENT Thermal: Horizontal and Vertical

MOUNTING Surface

JOINT SIZE 2 inches to 3 inches

LENGTH 10 Linear Feet

LOAD Pedestrian and Light Cart

INSTALLATION Floor

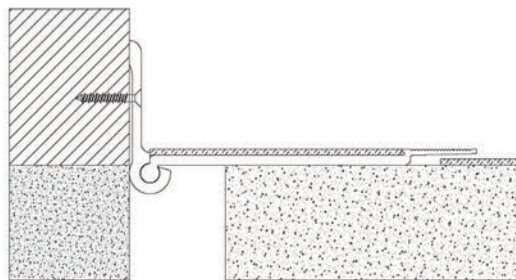
OPTIONS Moisture barrier, Fire barrier, Additional Materials, Sizes and Finishes available upon request

INSTALLATION

FLOOR-TO-FLOOR



FLOOR-TO-CORNER



For more information, download our Installation and Operating Manuals (IOM) and Shop Drawings on nystrom.com

ORDER GUIDE

MODEL	APPLICATION	JOINT SIZE AT MEAN T°F	EXPOSED SIGHT LINE	INFILL HEIGHT	TOTAL MOVEMENT
EJN-FA150-125	Floor to Floor	3" (76mm)	1.5" (38mm)	0.125" (3mm)	1.25" (32mm)
EJN-FA150-250	Floor to Floor	3" (76mm)	1.5" (38mm)	0.25" (6mm)	1.25" (32mm)
EJN-FA150-375	Floor to Floor	3" (76mm)	1.5" (38mm)	0.375" (10mm)	1.25" (32mm)
EJN-FA150-125W	Floor to Wall	3" (76mm)	1.5" (38mm)	0.125" (3mm)	1.25" (32mm)
EJN-FA150-250W	Floor to Wall	3" (76mm)	1.5" (38mm)	0.25" (6mm)	1.25" (32mm)
EJN-FA150-375W	Floor to Wall	3" (76mm)	1.5" (38mm)	0.375" (10mm)	1.25" (32mm)

Additional sizes available, email info@nystrom.com for more information.

Aluminum Flooring System

SURFACE APPLICATION (DT/DTw)

BENEFITS

ADA COMPLIANT Beveled edges provide a smooth, ADA-compliant transition.

EASY INSTALLATION Surface mount – no block out required. Simply attach to substrate with appropriate fasteners.



DETAILS

MATERIAL

6063-T5 Aluminum, Meets ASTM B221

6061-T6 Aluminum, Meets ASTM B209

5052 H32 Aluminum, Meets ASTM B209

FINISH Mill

MOVEMENT Thermal: Horizontal

MOUNTING Surface

JOINT SIZE 1 inch to 6 inches

LENGTH 10 Linear Feet

LOAD Pedestrian and Light Cart

INSTALLATION Floor

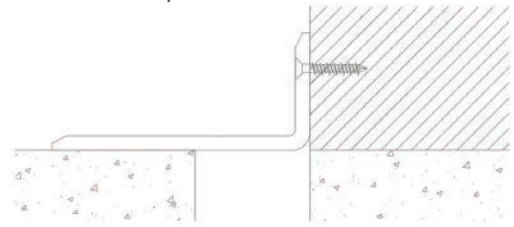
OPTIONS Moisture barrier, Fire barrier, Additional Materials, Sizes and Finishes available upon request

INSTALLATION

FLOOR-TO-FLOOR



FLOOR-TO-WALL/CORNER



For more information, download our Installation and Operating Manuals (IOM) and Shop Drawings on nystrom.com

ORDER GUIDE

MODEL	APPLICATION	JOINT SIZE AT MEAN T°F	EXPOSED SIGHT LINE	TOTAL MOVEMENT
EJN-DT-100	Floor to Floor	1" (25mm)	4" (102mm)	2" (51mm)
EJN-DT-200	Floor to Floor	2" (51mm)	6" (152mm)	4" (102mm)
EJN-DT-300	Floor to Floor	3" (76mm)	8.5" (216mm)	6" (152mm)
EJN-DT-400	Floor to Floor	4" (102mm)	10" (254mm)	8" (203mm)
EJN-DT-600	Floor to Floor	6" (152mm)	14" (356mm)	12" (305mm)
EJN-DT-100w	Floor to Wall	1" (25mm)	2.5" (64mm)	2" (51mm)
EJN-DT-200w	Floor to Wall	2" (51mm)	4.5" (114mm)	4" (102mm)
EJN-DT-300w	Floor to Wall	3" (76mm)	6.5" (165mm)	6" (152mm)
EJN-DT-400w	Floor to Wall	4" (102mm)	8.5" (216mm)	8" (203mm)
EJN-DT-600w	Floor to Wall	6" (152mm)	12.5" (318mm)	12" (305mm)

Additional options available, email info@nystrom.com for more information.

Aluminum Gym Flooring System

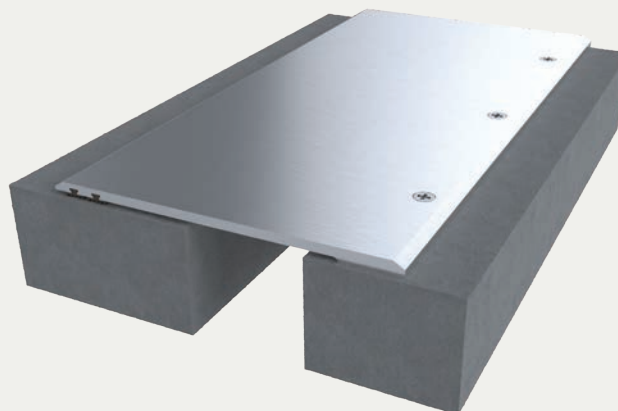
SURFACE APPLICATION (DTG)

BENEFITS

SOUND DAMPENING Ideal for gymnasium floors; features two gaskets to dampen sound in high-pedestrian traffic applications.

EASY INSTALLATION Easily installs on floor surface, directly to the substrate without the preformed blockout requirements.

ADA COMPLIANT Beveled edges provide a smooth, ADA-compliant transition.



DETAILS

MATERIAL 6063-T6 Aluminum, Meets ASTM B221

FINISH Mill

MOVEMENT Thermal: Horizontal

MOUNTING Surface

JOINT SIZE 1 inch and 2 inches

LENGTH 10 Linear Feet

LOAD Pedestrian and Light Cart

INSTALLATION Floor

OPTIONS Moisture barrier, Fire barrier, Additional Materials, Sizes and Finishes available upon request

INSTALLATION

FLOOR-TO-FLOOR



For more information, download our Installation and Operating Manuals (IOM) and Shop Drawings on nystrom.com

ORDER GUIDE

MODEL	APPLICATION	JOINT SIZE AT MEAN T°F	EXPOSED SIGHT LINE	TOTAL MOVEMENT
EJN-DTG-100	Surface	1" (25mm)	4.18" (107mm)	1" (25mm)
EJN-DTG-200	Surface	2" (51mm)	6" (153mm)	2" (51mm)

Additional options available, email info@nystrom.com for more information.

Seismic Aluminum Flooring System

SURFACE APPLICATION (SFE/SFEw)

BENEFITS

SEISMIC TECHNOLOGY The cover plate stays centered over openings before, during and after a seismic event with the use of the seismic centering bar.

RENOVATION Easy to install in non-blockout applications and meets ADA compliance.



DETAILS

MATERIAL

6063-T5 Aluminum, Meets ASTM B221
6061-T6 Aluminum, Meets ASTM B209
5052 H32 Aluminum, Meets ASTM B209

FINISH

Mill

MOVEMENT

Thermal: Horizontal and Vertical
Seismic: Lateral Shear

MOUNTING

Surface

JOINT SIZE

2 inches to 12 inches

LENGTH

10 Linear Feet

APPLICATION

Interior

LOAD

Pedestrian and Light Cart

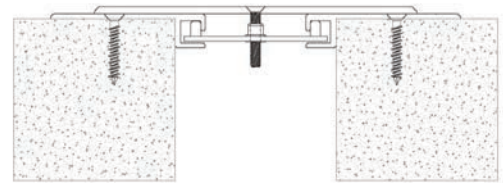
INSTALLATION

Floor

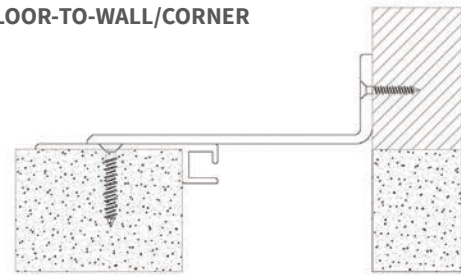
OPTIONS Moisture barrier, Fire barrier, Additional Materials, Sizes and Finishes available upon request

INSTALLATION

FLOOR-TO-FLOOR



FLOOR-TO-WALL/CORNER



AS BUILT CONDITIONS MAY VARY. For more information, download our Installation and Operation Manuals (IOM) and Shop Drawings on nystrom.com

ORDER GUIDE

MODEL	APPLICATION	JOINT SIZE AT MEAN T°F	EXPOSED SIGHT LINE	TOTAL MOVEMENT
EJN-SFE-200	Floor to Floor	2" (51mm)	6.75" (171mm)	2" (51mm)
EJN-SFE-400	Floor to Floor	4" (102mm)	10.18" (258mm)	4" (102mm)
EJN-SFE-600	Floor to Floor	6" (152mm)	13.25" (337mm)	6" (152mm)
EJN-SFE-800	Floor to Floor	8" (203mm)	16.75" (425mm)	8" (203mm)
EJN-SFE-1000	Floor to Floor	10" (254mm)	20.75" (527mm)	10" (254mm)
EJN-SFE-1200	Floor to Floor	12" (305mm)	24.75" (629mm)	12" (305mm)
EJN-SFE-200W	Floor to Wall	2" (51mm)	4.37" (111mm)	1" (25mm)
EJN-SFE-400W	Floor to Wall	4" (102mm)	7.06" (180mm)	2" (51mm)
EJN-SFE-600W	Floor to Wall	6" (152mm)	9.62" (244mm)	3" (76mm)
EJN-SFE-800W	Floor to Wall	8" (203mm)	12.37" (314mm)	4" (102mm)
EJN-SFE-1000W	Floor to Wall	10" (254mm)	15.37" (391mm)	5" (127mm)
EJN-SFE-1200W	Floor to Wall	12" (305mm)	18.37" (467mm)	6" (152mm)

Additional options available, email info@nystrom.com for more information.

Seismic Aluminum Flooring System

SURFACE BLOCKOUT APPLICATION (SFC/SFCw)

BENEFITS

SEISMIC TECHNOLOGY The cover plate stays centered over openings before, during and after a seismic event with the use of the seismic centering bar.

ADA COMPLIANT Heavy pedestrian traffic requirements are met while maintaining an ADA Compliant transition.



DETAILS

MATERIAL

6063-T5 Aluminum, Meets ASTB B221

6061-T6 Aluminum, Meets ASTM B209

5052 H32 Aluminum, Meets ASTM B209

FINISH Mill

MOVEMENT

Thermal: Horizontal and vertical

Seismic: Lateral Shear

MOUNTING Block Out

JOINT SIZE 2 inches to 12 inches

LENGTH 10 Linear Feet

APPLICATION Interior

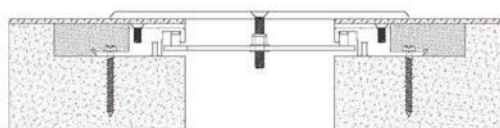
LOAD Pedestrian and Light Cart

INSTALLATION Floor

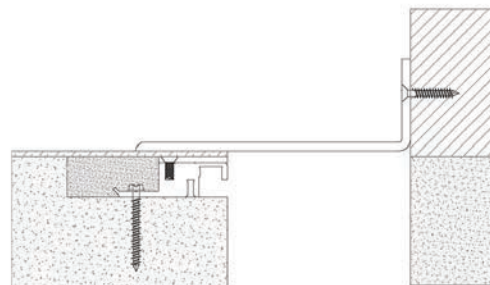
OPTIONS Moisture barrier, Fire barrier, Additional Materials, Sizes and Finishes available upon request

INSTALLATION

FLOOR-TO-FLOOR



FLOOR-TO-WALL-CORNER



For more information, download our Installation and Operating Manuals (IOM) and Shop Drawings on nystrom.com

ORDER GUIDE

MODEL	APPLICATION	JOINT SIZE AT MEAN T°F	EXPOSED SIGHT LINE	TOTAL MOVEMENT
EJN-SFC-200	Floor to Floor	2" (51mm)	5" (127mm)	2" (51mm)
EJN-SFC-400	Floor to Floor	4" (102mm)	8" (203mm)	4" (102mm)
EJN-SFC-600	Floor to Floor	6" (152mm)	11" (279mm)	6" (152mm)
EJN-SFC-800	Floor to Floor	8" (203mm)	14" (356mm)	8" (203mm)
EJN-SFC-1000	Floor to Floor	10" (254mm)	17" (432mm)	10" (254mm)
EJN-SFC-1200	Floor to Floor	12" (305mm)	20" (508mm)	12" (305mm)
EJN-SFC-200W	Floor to Wall	2" (51mm)	3.5" (89mm)	1" (25mm)
EJN-SFC-400W	Floor to Wall	4" (102mm)	6" (152mm)	2" (51mm)
EJN-SFC-600W	Floor to Wall	6" (152mm)	8.5" (216mm)	3" (76mm)
EJN-SFC-800W	Floor to Wall	8" (203mm)	11" (279mm)	4" (102mm)
EJN-SFC-1000W	Floor to Wall	10" (254mm)	13.5" (343mm)	5" (127mm)
EJN-SFC-1200W	Floor to Wall	12" (305mm)	16" (406mm)	6" (152mm)

Additional options available, email info@nystrom.com for more information.

Seismic Aluminum Flooring System

RECESSED BLOCKOUT APPLICATION (SFG/SFGw)

BENEFITS

SEISMIC TECHNOLOGY The cover plate stays centered over openings before, during and after a seismic event with the use of the seismic centering bar.

ADA COMPLIANT Heavy pedestrian traffic requirements are met while maintaining an ADA Compliant transition.



DETAILS

MATERIAL

6063-T5 Aluminum, Meets ASTM B221 and B209

6061-T6 Aluminum, Meets ASTM B221 and B209

5052 H32 Aluminum, Meets ASTM B221 and B209

FINISH Mill

MOVEMENT

Thermal: Horizontal and Vertical

Seismic: Lateral Shear

MOUNTING Block Out

JOINT SIZE 2 inches to 12 inches

LENGTH 10 Linear Feet

APPLICATION Interior

LOAD Pedestrian and Light Cart

INSTALLATION Floor

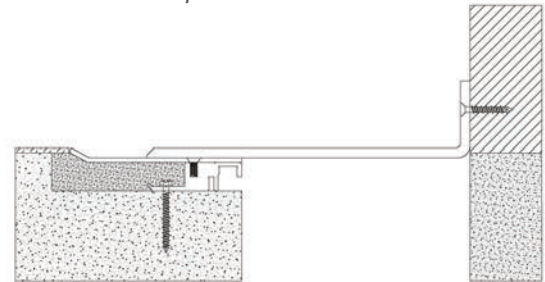
OPTIONS Moisture barrier, Fire barrier, Additional Materials, Sizes and Finishes available upon request

INSTALLATION

FLOOR-TO-FLOOR



FLOOR-TO-WALL/CORNER



For more information, download our Installation and Operating Manuals (IOM) and Shop Drawings on nystrom.com

ORDER GUIDE

MODEL	APPLICATION	JOINT SIZE AT MEAN T°F	EXPOSED SIGHT LINE	TOTAL MOVEMENT
EJN-SFG-200	Floor to Floor	2" (51mm)	6" (152mm)	2" (51mm)
EJN-SFG-400	Floor to Floor	4" (102mm)	8.87" (225mm)	4" (102mm)
EJN-SFG-600	Floor to Floor	6" (152mm)	15" (382mm)	6" (152mm)
EJN-SFG-800	Floor to Floor	8" (203mm)	19" (483mm)	8" (203mm)
EJN-SFG-1000	Floor to Floor	10" (254mm)	23" (584mm)	10" (254mm)
EJN-SFG-1200	Floor to Floor	12" (305mm)	27" (686mm)	12" (305mm)
EJN-SFG-200W	Floor to Wall	2" (51mm)	4" (102mm)	1" (25mm)
EJN-SFG-400W	Floor to Wall	4" (102mm)	6.44" (164mm)	2" (51mm)
EJN-SFG-600W	Floor to Wall	6" (152mm)	10.5" (267mm)	3" (76mm)
EJN-SFG-800W	Floor to Wall	8" (203mm)	13.5" (343mm)	4" (102mm)
EJN-SFG-1000W	Floor to Wall	10" (254mm)	16.5" (419mm)	5" (127mm)
EJN-SFG-1200W	Floor to Wall	12" (305mm)	19.5" (495mm)	6" (152mm)

Additional options available, email info@nystrom.com for more information.

Seismic Aluminum Flooring System

NO BUMP BLOCKOUT APPLICATION (SFP/SFPw)

BENEFITS

SEISMIC TECHNOLOGY The cover plate stays centered over openings before, during and after a seismic event with the use of the seismic centering bar.

ADA COMPLIANT Heavy pedestrian traffic requirements are met while maintaining an ADA compliant transition and no bump transition.



DETAILS

MATERIAL

6063-T5 Aluminum, Meets ASTM B221
6061-T6 Aluminum, Meets ASTM B209
5052 H32 Aluminum, Meets ASTM B209

FINISH Mill

MOVEMENT

Thermal: Horizontal and Vertical
Seismic: Lateral Shear

MOUNTING Blockout

JOINT SIZE 2 inches to 12 inches

LENGTH 10 Linear Feet

APPLICATION Interior

LOAD Pedestrian and Light Cart

INSTALLATION Floor

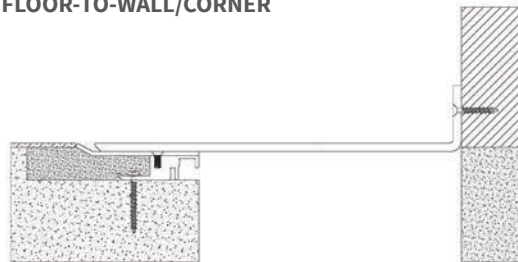
OPTIONS Moisture barrier, Fire barrier, Additional Materials, Sizes and Finishes available upon request

INSTALLATION

FLOOR-TO-FLOOR



FLOOR-TO-WALL/CORNER



AS BUILT CONDITIONS MAY VARY. For more information, download our Installation and Operation Manuals (IOM) and Shop Drawings on nystrom.com

ORDER GUIDE

MODEL	APPLICATION	JOINT SIZE AT MEAN T°F	EXPOSED SIGHT LINE	INFILL	TOTAL MOVEMENT
EJN-SFP-200	Floor to Floor	2" (51mm)	6" (152mm)	N/A	2" (51mm)
EJN-SFP-400	Floor to Floor	4" (102mm)	8" (203mm)	N/A	4" (102mm)
EJN-SFP-600	Floor to Floor	6" (152mm)	10.87" (276mm)	N/A	6" (152mm)
EJN-SFP-800	Floor to Floor	8" (203mm)	15.5" (394mm)	N/A	8" (203mm)
EJN-SFP-1000	Floor to Floor	10" (254mm)	18.5" (470mm)	N/A	10" (254mm)
EJN-SFP-1200	Floor to Floor	12" (305mm)	21.5" (546mm)	N/A	12" (305mm)
EJN-SFP-200W	Floor to Wall	2" (51mm)	4" (102mm)	N/A	1" (25mm)
EJN-SFP-400W	Floor to Wall	4" (102mm)	6" (152mm)	N/A	2" (51mm)
EJN-SFP-600W	Floor to Wall	6" (152mm)	8.43" (214mm)	N/A	3" (76mm)
EJN-SFP-800W	Floor to Wall	8" (203mm)	11.75" (298mm)	N/A	4" (102mm)
EJN-SFP-1000W	Floor to Wall	10" (254mm)	14.25" (362mm)	N/A	5" (127mm)
EJN-SFP-1200W	Floor to Wall	12" (305mm)	16.75" (425mm)	N/A	6" (152mm)

Additional options available, email info@nystrom.com for more information.

Seismic Aluminum Flooring System

RENOVATION BLOCKOUT APPLICATION (SFB/SFBw)

BENEFITS

SEISMIC TECHNOLOGY The cover plate stays centered over openings before, during and after a seismic event with the use of the seismic centering bar.

ADA COMPLIANT Heavy pedestrian traffic requirements are met while maintaining an ADA compliant transition.



DETAILS

MATERIAL

6063-T5 Aluminum, Meets ASTB B221
6061-T6 Aluminum, Meets ASTB B209
5052 H32 Aluminum, Meets ASTM B209

FINISH

Mill

MOVEMENT

Thermal: Horizontal and Vertical
Seismic: Lateral Shear

MOUNTING

Block Out / Surface

JOINT SIZE

2 inches to 12 inches

LENGTH

10 Linear Feet

APPLICATION

Interior

LOAD

Pedestrian and Light Cart

INSTALLATION

Floor

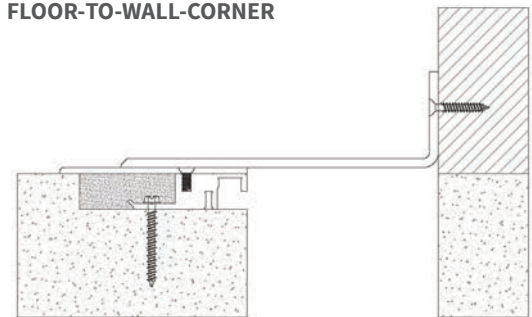
OPTIONS Moisture barrier, Fire barrier, Additional Materials, Sizes and Finishes available upon request

INSTALLATION

FLOOR-TO-FLOOR



FLOOR-TO-WALL-CORNER



For more information, download our Installation and Operating Manuals (IOM) and Shop Drawings on nystrom.com

ORDER GUIDE

MODEL	APPLICATION	JOINT SIZE AT MEAN T°F	EXPOSED SIGHT LINE	TOTAL MOVEMENT
EJN-SFB-200	Floor to Existing Floor	2" (51mm)	7.25" (184mm)	2" (51mm)
EJN-SFB-400	Floor to Existing Floor	4" (102mm)	11" (279mm)	4" (102mm)
EJN-SFB-600	Floor to Existing Floor	6" (152mm)	14.25" (362mm)	6" (152mm)
EJN-SFB-800	Floor to Existing Floor	8" (203mm)	17.75" (451mm)	8" (203mm)
EJN-SFB-1000	Floor to Existing Floor	10" (254mm)	21.25" (539mm)	10" (254mm)
EJN-SFB-1200	Floor to Existing Floor	12" (305mm)	25.25" (641mm)	12" (305mm)
EJN-SFB-200W	Floor to Wall Corner	2" (51mm)	4.75" (121mm)	1" (25mm)
EJN-SFB-400W	Floor to Wall Corner	4" (102mm)	7.94" (201mm)	2" (51mm)
EJN-SFB-600W	Floor to Wall Corner	6" (152mm)	10.62" (270mm)	3" (76mm)
EJN-SFB-800W	Floor to Wall Corner	8" (203mm)	13.37" (340mm)	4" (102mm)
EJN-SFB-1000W	Floor to Wall Corner	10" (254mm)	16.12" (410mm)	5" (127mm)
EJN-SFB-1200W	Floor to Wall Corner	12" (305mm)	19.12" (486mm)	6" (152mm)

Additional options available, email info@nystrom.com for more information.

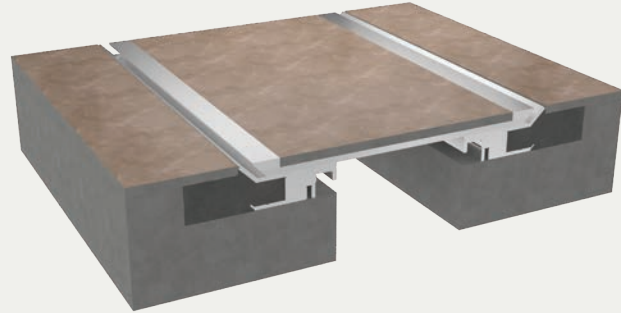
Seismic Aluminum Infill Flooring System

NO BUMP APPLICATION
(SFP with Infill/SFPw with Infill)

BENEFITS

SEISMIC TECHNOLOGY The cover plate stays centered over openings before, during and after a seismic event with the use of the centering bar.

ADA COMPLIANT Heavy pedestrian traffic requirements are met while maintaining a smooth transition, limited sight-line, and no bump transition.



DETAILS

MATERIAL

6063-T5 Aluminum, Meets ASTM B221
6061-T6 Aluminum, Meets ASTM B209
5052 H32 Aluminum, Meets ASTM B209

FINISH Mill

INFILL DEPTH 1/8 inch, 1/4 inch and 3/8 inch

MOVEMENT

Thermal: Horizontal and Vertical

Seismic: Lateral Shear

MOUNTING Blockout

JOINT SIZE 2 inches to 12 inches

LENGTH 10 Linear Feet

APPLICATION Interior

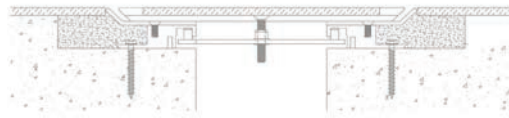
LOAD Pedestrian and Light Cart

INSTALLATION Floor

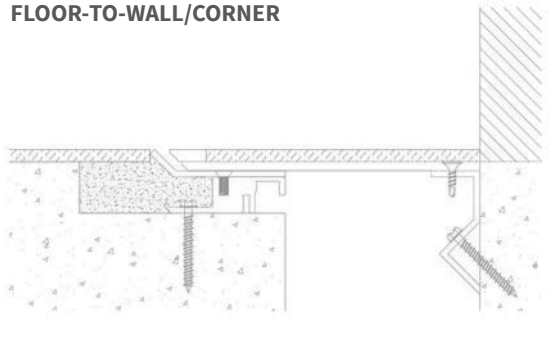
OPTIONS Moisture barrier, Fire barrier, Additional Materials, Sizes and Finishes available upon request

INSTALLATION

FLOOR-TO-FLOOR



FLOOR-TO-WALL/CORNER



AS BUILT CONDITIONS MAY VARY. For more information, download our Installation and Operation Manuals (IOM) and Shop Drawings on nystrom.com

ORDER GUIDE

MODEL	APPLICATION	JOINT SIZE AT MEAN T°F	SYSTEM WIDTH	INFILL HEIGHT	TOTAL MOVEMENT
EJN-SFP-200-125, -250, OR -375	Floor to Floor	2" (51mm)	Varies, See Shop Drawing	.125" (3mm), .250" (6mm), or .375" (10mm)	2" (51mm)
EJN-SFP-400-125, -250, OR -375	Floor to Floor	4" (102mm)	Varies, See Shop Drawing	.125" (3mm), .250" (6mm), or .375" (10mm)	4" (102mm)
EJN-SFP-600-125, -250, OR -375	Floor to Floor	6" (152mm)	Varies, See Shop Drawing	.125" (3mm), .250" (6mm), or .375" (10mm)	6" (152mm)
EJN-SFP-800-125, -250, OR -375	Floor to Floor	8" (203mm)	Varies, See Shop Drawing	.125" (3mm), .250" (6mm), or .375" (10mm)	8" (203mm)
EJN-SFP-1000-125, -250, OR -375	Floor to Floor	10" (254mm)	Varies, See Shop Drawing	.125" (3mm), .250" (6mm), or .375" (10mm)	10" (254mm)
EJN-SFP-1200-125, -250, OR -375	Floor to Floor	12" (305mm)	Varies, See Shop Drawing	.125" (3mm), .250" (6mm), or .375" (10mm)	12" (305mm)
EJN-SFP-200W-125, -250, OR -375	Floor to Wall Corner	2" (51mm)	Varies, See Shop Drawing	.125" (3mm), .250" (6mm), or .375" (10mm)	1" (25mm)
EJN-SFP-400W-125, -250, OR -375	Floor to Wall Corner	4" (102mm)	Varies, See Shop Drawing	.125" (3mm), .250" (6mm), or .375" (10mm)	2" (51mm)
EJN-SFP-600W-125, -250, OR -375	Floor to Wall Corner	6" (152mm)	Varies, See Shop Drawing	.125" (3mm), .250" (6mm), or .375" (10mm)	3" (76mm)
EJN-SFP-800W-125, -250, OR -375	Floor to Wall Corner	8" (203mm)	Varies, See Shop Drawing	.125" (3mm), .250" (6mm), or .375" (10mm)	4" (102mm)
EJN-SFP-1000W-125, -250, OR -375	Floor to Wall Corner	10" (254mm)	Varies, See Shop Drawing	.125" (3mm), .250" (6mm), or .375" (10mm)	5" (127mm)
EJN-SFP-1200W-125, -250, OR -375	Floor to Wall Corner	12" (305mm)	Varies, See Shop Drawing	.125" (3mm), .250" (6mm), or .375" (10mm)	6" (152mm)

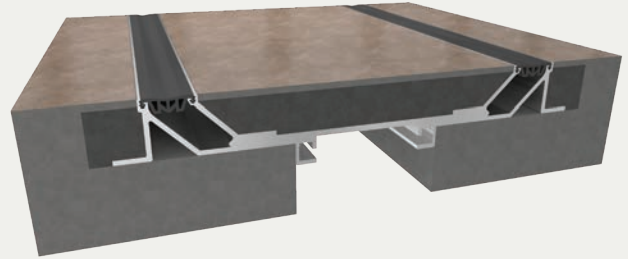
Seismic Pan Flooring System

BLOCKOUT APPLICATION (FLP/FLPw)

BENEFITS

DEEP WELL PAN Designed for terrazzo or tile with a narrow sight line to minimize the aesthetic disruption to floor finishes.

FLUSH COVER Seals are flush with flooring, easy to clean, and prevent dirt and water traps.



DETAILS

MATERIAL 6063-T6 Aluminum

FINISH Mill

MOVEMENT

Thermal: Horizontal and Vertical

Seismic: Lateral Shear

Total Thermal Movement Capabilities is limited to the 2-Component Polyurethane Sealant Used.

MOUNTING Blockout

JOINT SIZE 2 inches to 24 inches

LENGTH 10 Linear Feet

LOAD Pedestrian and Light Cart

INSTALLATION Floor

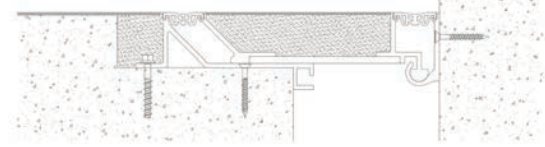
OPTIONS Moisture barrier, Fire barrier, Additional Materials, Sizes and Finishes available upon request

INSTALLATION

FLOOR-TO-FLOOR



FLOOR-TO-WALL/CORNER

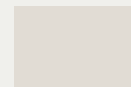


For more information, download our Installation and Operating Manuals (IOM) and Shop Drawings on nystrom.com

SEAL COLORS



Beige



White



Gray



Black

ORDER GUIDE

MODEL	APPLICATION	JOINT SIZE AT MEAN T°F	SYSTEM WIDTH	TOTAL MOVEMENT
EJN-FLP-200	Floor to Floor	2" (51mm)	14" (356mm)	2" (51mm)
EJN-FLP-400	Floor to Floor	4" (102mm)	15" (381mm)	4" (102mm)
EJN-FLP-600	Floor to Floor	6" (152mm)	17" (432mm)	6" (152mm)
EJN-FLP-800	Floor to Floor	8" (203mm)	22" (559mm)	8" (203mm)
EJN-FLP-1000	Floor to Floor	10" (254mm)	24" (610mm)	10" (254mm)
EJN-FLP-1200	Floor to Floor	12" (305mm)	31" (787mm)	12" (305mm)
EJN-FLP-1400	Floor to Floor	14" (356mm)	33" (838mm)	14" (356mm)
EJN-FLP-1600	Floor to Floor	16" (406mm)	35" (889mm)	16" (406mm)
EJN-FLP-1800	Floor to Floor	18" (457mm)	44" (1118mm)	18" (457mm)
EJN-FLP-2000	Floor to Floor	20" (508mm)	46" (1168mm)	20" (508mm)
EJN-FLP-2200	Floor to Floor	22" (559mm)	48" (1219mm)	22" (559mm)
EJN-FLP-2400	Floor to Floor	24" (610mm)	50" (1270mm)	24" (610mm)

Additional options available, email info@nystrom.com for more information.

MODEL	APPLICATION	JOINT SIZE AT MEAN T°F	SYSTEM WIDTH	TOTAL MOVEMENT
EJN-FLP-200W	Floor to Wall	2" (51mm)	8.25" (208mm)	1.5" (38mm)
EJN-FLP-400W	Floor to Wall	4" (102mm)	10.25" (259mm)	4" (102mm)
EJN-FLP-600W	Floor to Wall	6" (152mm)	11.5" (292mm)	6" (152mm)
EJN-FLP-800W	Floor to Wall	8" (203mm)	15" (381mm)	8" (203mm)
EJN-FLP-1000W	Floor to Wall	10" (254mm)	17" (432mm)	10" (254mm)
EJN-FLP-1200W	Floor to Wall	12" (305mm)	21.5" (546mm)	12" (305mm)
EJN-FLP-1400W	Floor to Wall	14" (356mm)	23.5" (597mm)	14" (356mm)
EJN-FLP-1600W	Floor to Wall	16" (406mm)	25.5" (648mm)	16" (406mm)
EJN-FLP-1800W	Floor to Wall	18" (457mm)	31" (787mm)	18" (457mm)
EJN-FLP-2000W	Floor to Wall	20" (508mm)	33" (838mm)	20" (508mm)
EJN-FLP-2200W	Floor to Wall	22" (559mm)	35" (889mm)	22" (559mm)
EJN-FLP-2400W	Floor to Wall	24" (610mm)	37" (940mm)	24" (610mm)

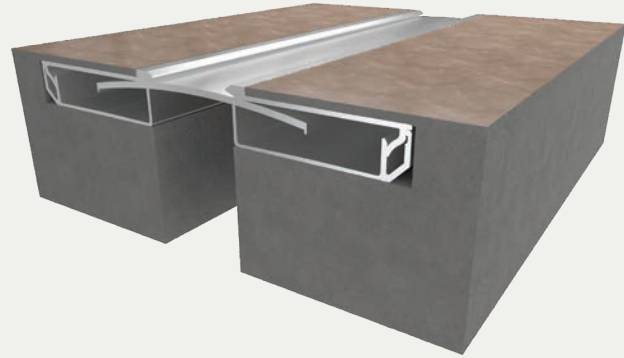
Seismic Aluminum Glide Flooring System

INFILL BLOCKOUT APPLICATION (NBR/NBRw)

BENEFITS

FLOORING INFILL Designed with a recess for vinyl, carpet or tile (VCT) flooring to cover the aluminum plate and reduce the overall sight-line.

COORDINATING CORNERS Available with corner option for a complete floor solution.



DETAILS

MATERIAL 6063-T5 Aluminum

FINISH Mill

MOVEMENT

Thermal: Horizontal and Vertical

Seismic: Lateral Shear

MOUNTING Block Out

JOINT SIZE 1 inch to 4 inches

LENGTH 10 Linear Feet

APPLICATION Interior

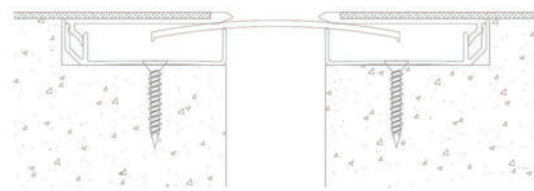
LOAD Pedestrian and Light Cart

INSTALLATION Floor

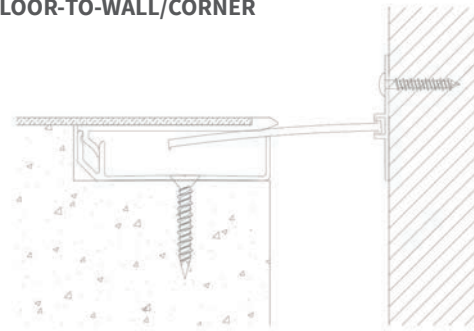
OPTIONS Moisture barrier, Fire barrier, Additional Materials, Sizes and Finishes available upon request

INSTALLATION

FLOOR-TO-FLOOR



FLOOR-TO-WALL/CORNER



For more information, download our Installation and Operating Manuals (IOM) and Shop Drawings on nystrom.com

ORDER GUIDE

MODEL	APPLICATION	JOINT SIZE AT MEAN T°F	EXPOSED SIGHT LINE	INFILL HEIGHT	TOTAL MOVEMENT
EJN-NBR-100	Floor to Floor	1" (25mm)	1.75" (44mm)	0.125" (3mm)	1" (25mm)
EJN-NBR-200	Floor to Floor	2" (51mm)	2.75" (70mm)	0.125" (3mm)	2" (51mm)
EJN-NBR-300	Floor to Floor	3" (76mm)	3.75" (95mm)	0.125" (3mm)	3" (76mm)
EJN-NBR-400	Floor to Floor	4" (102mm)	4.75" (120mm)	0.125" (3mm)	4" (102mm)
EJN-NBR-100W	Floor to Wall	1" (25mm)	1.375" (35mm)	0.125" (3mm)	.5" (13mm)
EJN-NBR-200W	Floor to Wall	2" (51mm)	2.375" (60mm)	0.125" (3mm)	1" (25mm)
EJN-NBR-300W	Floor to Wall	3" (76mm)	3.375" (88mm)	0.125" (3mm)	1.5" (38mm)
EJN-NBR-400W	Floor to Wall	4" (102mm)	4.375" (111mm)	0.125" (3mm)	2" (51mm)

Additional options available, email info@nystrom.com for more information.

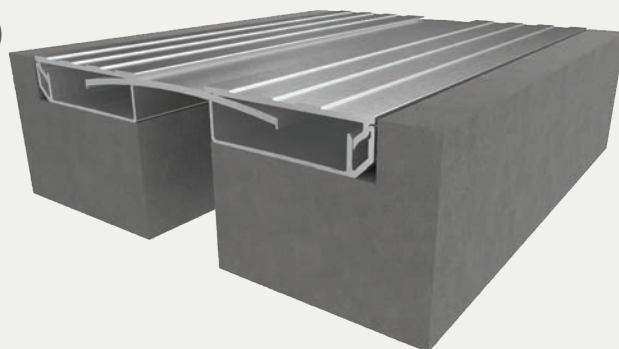
Seismic Aluminum Glide Flooring System

NO-BUMP BLOCKOUT APPLICATION (NBF/NBFw)

BENEFITS

ANTI-SLIP SURFACE The no bump, ribbed anti-slip surface provides safe functionality for foot and cart traffic.

COORDINATING CORNERS Available with corner option for a complete floor solution.



DETAILS

MATERIAL 6063-T5 Aluminum

FINISH Mill

MOVEMENT

Thermal: Horizontal and Vertical

Seismic: Lateral Shear

MOUNTING Block Out

JOINT SIZE 1 inch to 4 inches

LENGTH 10 Linear Feet

LOAD Pedestrian and Light Cart

INSTALLATION Floor

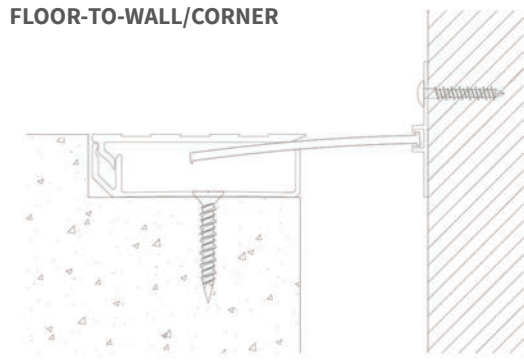
OPTIONS Moisture barrier, Fire barrier, Additional Materials, Sizes and Finishes available upon request

INSTALLATION

FLOOR-TO-FLOOR



FLOOR-TO-WALL/CORNER



For more information, download our Installation and Operating Manuals (IOM) and Shop Drawings on nystrom.com

ORDER GUIDE

MODEL	APPLICATION	JOINT SIZE AT MEAN T°F	EXPOSED SIGHT LINE	TOTAL MOVEMENT
EJN-NBF-100	Floor to Floor	1" (25mm)	5.5" (140mm)	1" (25mm)
EJN-NBF-200	Floor to Floor	2" (51mm)	8.5" (216mm)	2" (51mm)
EJN-NBF-300	Floor to Floor	3" (76mm)	9.5" (241mm)	3" (76mm)
EJN-NBF-400	Floor to Floor	4" (102mm)	10.5" (267mm)	4" (102mm)
EJN-NBF-100W	Floor to Wall	1" (25mm)	3.25" (83mm)	.5" (13mm)
EJN-NBF-200W	Floor to Wall	2" (51mm)	5.31" (134mm)	1" (25mm)
EJN-NBF-300W	Floor to Wall	3" (76mm)	6.25" (159mm)	1.5" (38mm)
EJN-NBF-400W	Floor to Wall	4" (102mm)	7.25" (184mm)	2" (51mm)

Additional options available, email info@nystrom.com for more information.

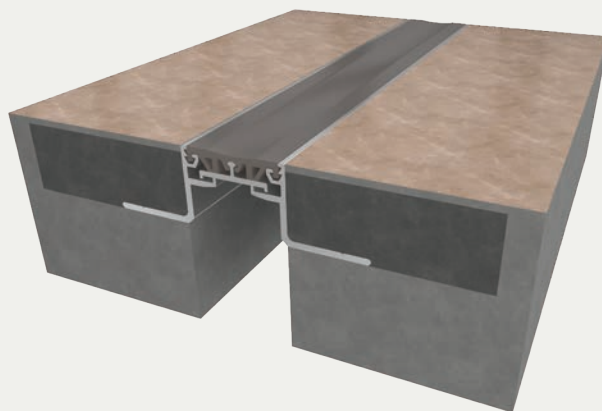
Elastomeric Corridor Flooring System

BLOCKOUT APPLICATION (LCF/LCFw)

BENEFITS

COORDINATING CORNERS Available with corner option for a complete floor solution.

COMPLEMENTARY SEAL COLORS Available in four elastomeric colors: beige, white, gray or black.



DETAILS

MATERIAL 6063-T5 Aluminum, Meets ASTM B221 and Santoprene

FINISH Mill

MOVEMENT Thermal: Horizontal

MOUNTING Blockout

JOINT SIZE 1 inch to 3 inches

LENGTH 10 Linear Feet

LOAD Pedestrian and Light Cart

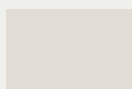
INSTALLATION Floor

OPTIONS Moisture barrier, Fire barrier and Additional Materials, Sizes and Finishes upon request

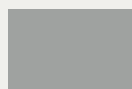
SEAL COLORS



Beige



White



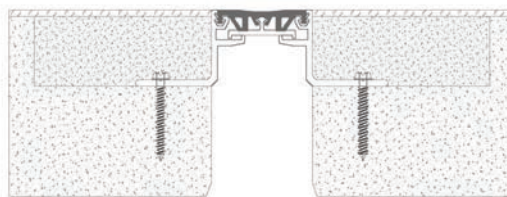
Gray



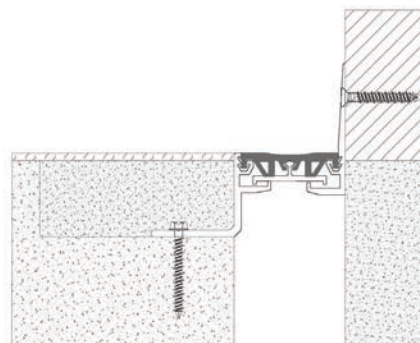
Black

INSTALLATION

FLOOR-TO-FLOOR



FLOOR-TO-WALL/CORNER



For more information, download our Installation and Operating Manuals (IOM) and Shop Drawings on nystrom.com

ORDER GUIDE

MODEL	APPLICATION	JOINT SIZE AT MEAN T°F	EXPOSED SIGHT LINE	TOTAL MOVEMENT
EJN-LCF-100	Floor to Floor	1" (25mm)	1" (25mm)	.5" (13mm)
EJN-LCF-200	Floor to Floor	2" (51mm)	2" (51mm)	1" (25mm)
EJN-LCF-300	Floor to Floor	3" (76mm)	3" (76mm)	1.02" (26mm)
EJN-LCF-100W	Floor to Wall	1" (25mm)	1" (25mm)	.5" (13mm)
EJN-LCF-200W	Floor to Wall	2" (51mm)	2" (51mm)	1" (25mm)
EJN-LCF-300W	Floor to Wall	3" (76mm)	3" (76mm)	1.02" (26mm)

Additional sizes available, email info@nystrom.com for more information.

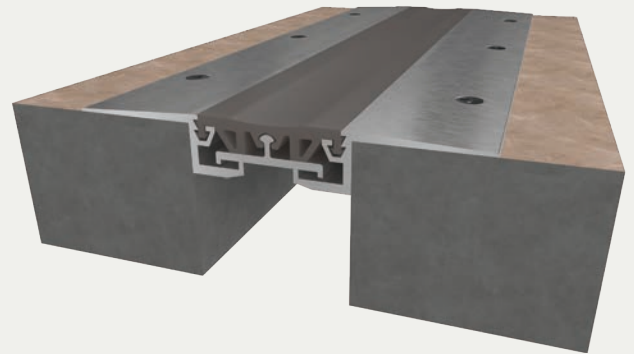
Elastomeric Corridor Flooring System

SURFACE APPLICATION (LCFS/LCFSw)

BENEFITS

COORDINATING CORNERS Available with corner option for a complete floor solution.

COMPLEMENTARY SEAL COLORS Available in four elastomeric colors: beige, white, gray or black.



DETAILS

MATERIAL 6063-T5 Aluminum, Meets ASTM B221 and Santoprene

FINISH Mill

MOVEMENT Thermal: Horizontal

MOUNTING Surface

JOINT SIZE 1 inch to 3 inches

LENGTH 10 Linear Feet

LOAD Pedestrian and Light Cart

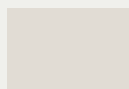
INSTALLATION Floor

OPTIONS Moisture barrier, Fire barrier and Additional Materials, Sizes and Finishes upon request

SEAL COLORS



Beige



White



Gray



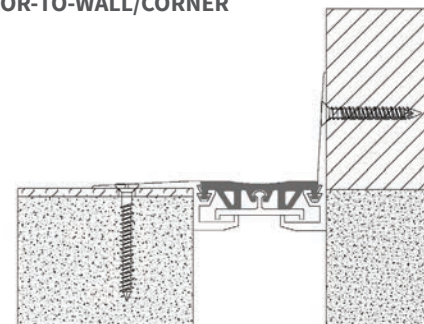
Black

INSTALLATION

FLOOR-TO-FLOOR



FLOOR-TO-WALL/CORNER



For more information, download our Installation and Operating Manuals (IOM) and Shop Drawings on nystrom.com

ORDER GUIDE

MODEL	APPLICATION	JOINT SIZE AT MEAN T°F	EXPOSED SIGHT LINE	TOTAL MOVEMENT
EJN-LCFS-100	Floor to Floor	1" (25mm)	4" (102mm)	.5" (13mm)
EJN-LCFS-200	Floor to Floor	2" (51mm)	5" (127mm)	1" (25mm)
EJN-LCFS-300	Floor to Floor	3" (76mm)	6" (152mm)	1.02" (26mm)
EJN-LCFS-100W	Floor to Wall	1" (25mm)	2.5" (64mm)	.5" (13mm)
EJN-LCFS-200W	Floor to Wall	2" (51mm)	3.5" (89mm)	1" (25mm)
EJN-LCFS-300W	Floor to Wall	3" (76mm)	4.5" (114mm)	1.02" (26mm)

Additional sizes available, email info@nystrom.com for more information.

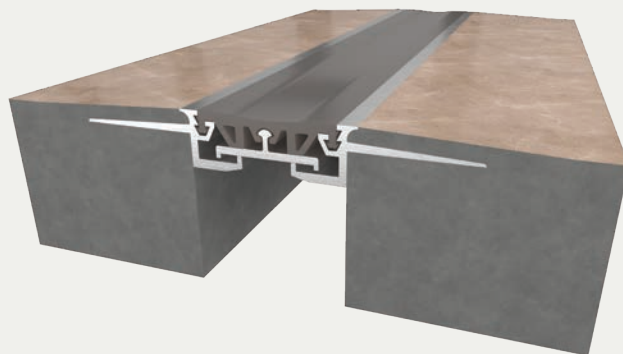
Elastomeric Corridor Flooring System

INFILL APPLICATION (LCFC/LCFCw)

BENEFITS

COORDINATING CORNERS Available with corner option for a complete floor solution.

COMPLEMENTARY SEAL COLORS Available in four elastomeric colors: beige, white, gray or black.



DETAILS

MATERIAL 6063-T5 Aluminum, Meets ASTM B221 and Santoprene

FINISH Mill

MOVEMENT Thermal: Horizontal

MOUNTING Surface

JOINT SIZE 1 inch to 3 inches

LENGTH 10 Linear Feet

LOAD Pedestrian and Light Cart

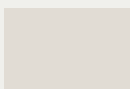
INSTALLATION Floor

OPTIONS Moisture barrier, Fire barrier and Additional Materials, Sizes and Finishes upon request

SEAL COLORS



Beige



White



Gray



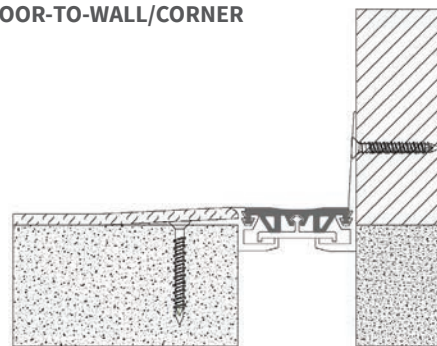
Black

INSTALLATION

FLOOR-TO-FLOOR



FLOOR-TO-WALL/CORNER



For more information, download our Installation and Operating Manuals (IOM) and Shop Drawings on nystrom.com

ORDER GUIDE

MODEL	APPLICATION	JOINT SIZE AT MEAN T°F	EXPOSED SIGHT LINE	INFILL HEIGHT	TOTAL MOVEMENT
EJN-LCFC-100	Floor to Floor	1" (25mm)	1.25" (31mm)	.187" (5mm)	.5" (13mm)
EJN-LCFC-200	Floor to Floor	2" (51mm)	2.25" (57mm)	.187" (5mm)	1" (25mm)
EJN-LCFC-300	Floor to Floor	3" (76mm)	3.25" (83mm)	.187" (5mm)	1.02" (26mm)
EJN-LCFC-100W	Floor to Wall	1" (25mm)	1.12" (29mm)	.187" (5mm)	.5" (13mm)
EJN-LCFC-200W	Floor to Wall	2" (51mm)	2.12" (54mm)	.187" (5mm)	1" (25mm)
EJN-LCFC-300W	Floor to Wall	3" (76mm)	3.12" (79mm)	.187" (5mm)	1.02" (26mm)

Additional sizes available, email info@nystrom.com for more information.

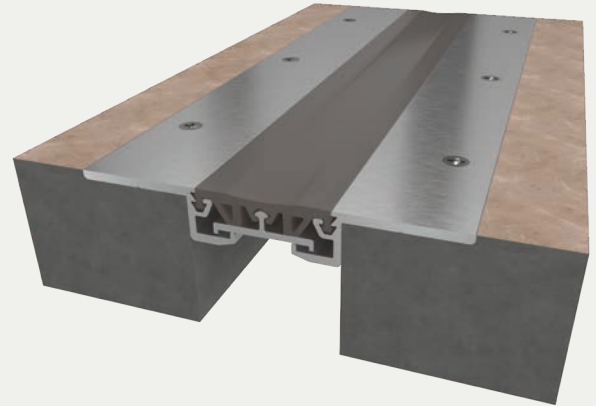
Elastomeric Corridor Flooring System

TILE APPLICATION (LCFT/LCFTw)

BENEFITS

COORDINATING CORNERS Available with corner option for a complete floor solution.

COMPLEMENTARY SEAL COLORS Available in four elastomeric colors: beige, white, gray or black.



DETAILS

MATERIAL 6063-T5 Aluminum, Meets ASTM B221 and Santoprene

FINISH Mill

MOVEMENT Thermal: Horizontal

MOUNTING Surface

JOINT SIZE 1 inch to 3 inches

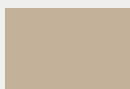
LENGTH 10 Linear Feet

LOAD Pedestrian and Light Cart

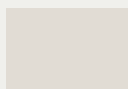
INSTALLATION Floor

OPTIONS Moisture barrier, Fire barrier and Additional Materials, Sizes and Finishes upon request

SEAL COLORS



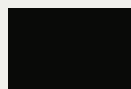
Beige



White



Gray



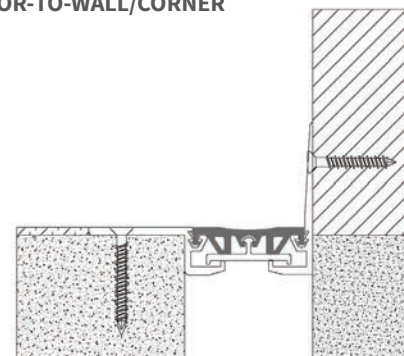
Black

INSTALLATION

FLOOR-TO-FLOOR



FLOOR-TO-WALL/CORNER



For more information, download our Installation and Operating Manuals (IOM) and Shop Drawings on nystrom.com

ORDER GUIDE

MODEL	APPLICATION	JOINT SIZE AT MEAN T°F	EXPOSED SIGHT LINE	TOTAL MOVEMENT
EJN-LCFT-100	Floor to Floor	1" (25mm)	4" (102mm)	.5" (13mm)
EJN-LCFT-200	Floor to Floor	2" (51mm)	5" (127mm)	1" (25mm)
EJN-LCFT-300	Floor to Floor	3" (76mm)	6" (152mm)	1.02" (26mm)
EJN-LCFT-100W	Floor to Wall	1" (25mm)	2.5" (64mm)	.5" (13mm)
EJN-LCFT-200W	Floor to Wall	2" (51mm)	3.5" (89mm)	1" (25mm)
EJN-LCFT-300W	Floor to Wall	3" (76mm)	4.5" (114mm)	1.02" (26mm)

Additional sizes available, email info@nystrom.com for more information.

EXPANSION JOINT SYSTEMS

WALL & CEILING SYSTEMS

Pages 25-36

Architectural Metals 25-28

Elastomeric Seals 29-36

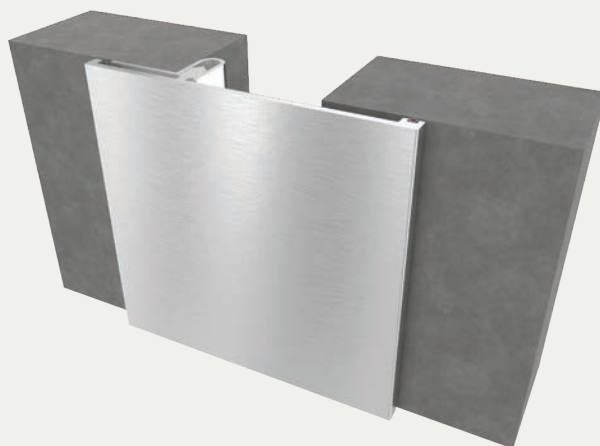
Aluminum Wall & Ceiling

SURFACE SNAP-ON APPLICATION (WJ/WJw)

BENEFITS

AESTHETICS The sliding cover plate with a clear anodized finish provides a high-end appearance.

CONTINUOUS SIGHT LINE This system can be used on walls, ceilings and corners to provide seamless and continuous aesthetics.



DETAILS

MATERIAL 6063-T5 Aluminum, Meets ASTM B221

FINISH Clear Anodized

MOVEMENT Thermal: Horizontal

MOUNTING Surface

JOINT SIZE 1 inch to 4 inches

LENGTH 10 Linear Feet

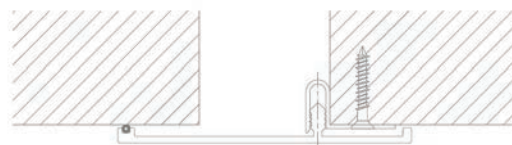
APPLICATION Interior

INSTALLATION Wall or Ceiling

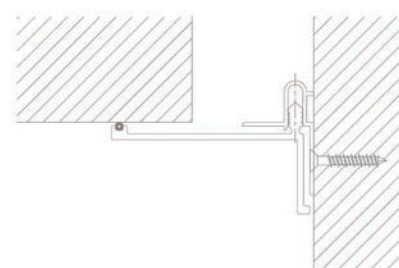
OPTIONS Moisture barrier, Fire barrier and Additional Materials, Sizes and Finishes upon request

INSTALLATION

WALL/CEILING-TO-WALL/CEILING



WALL/CEILING-TO-CORNER



For more information, download our Installation and Operating Manuals (IOM) and Shop Drawings on nystrom.com

ORDER GUIDE

MODEL	APPLICATION	JOINT SIZE AT MEAN T°F	EXPOSED SIGHT LINE	TOTAL MOVEMENT
EJN-WJ-100	Wall/Ceiling to Wall/Ceiling	1" (25mm)	4.5" (114mm)	1" (25mm)
EJN-WJ-200	Wall/Ceiling to Wall/Ceiling	2" (51mm)	4.5" (114mm)	2" (51mm)
EJN-WJ-300	Wall/Ceiling to Wall/Ceiling	3" (76mm)	8.5" (216mm)	3" (76mm)
EJN-WJ-400	Wall/Ceiling to Wall/Ceiling	4" (102mm)	8.5" (216mm)	4" (102mm)
EJN-WJ-100W	Wall/Ceiling to Corner	1" (25mm)	3.312" (84mm)	1" (25mm)
EJN-WJ-200W	Wall/Ceiling to Corner	2" (51mm)	3.312" (84mm)	2" (51mm)
EJN-WJ-300W	Wall/Ceiling to Corner	3" (76mm)	6.315" (160mm)	3" (76mm)
EJN-WJ-400W	Wall/Ceiling to Corner	4" (102mm)	6.315" (160mm)	4" (102mm)

Additional sizes available, email info@nystrom.com for more information.

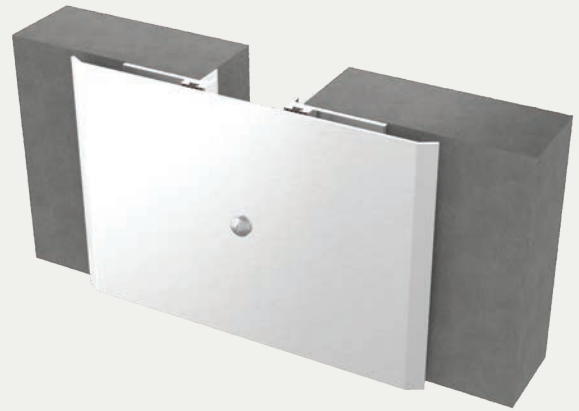
Seismic Aluminum Wall & Ceiling System

SURFACE APPLICATION (FCT/FCTw)

BENEFITS

SEISMIC CENTERING BAR System realigns itself with the self-centering bar, maintaining a finished appearance.

ARCHITECTURAL ELEGANCE The clear anodized cover plate finish provides a high-end appearance.



DETAILS

MATERIAL

6063-T5 Aluminum, Meets ASTM B221

6061-T6 Aluminum, Meets ASTM B209

5052 H32 Aluminum, Meets ASTM B209

FINISH Clear Anodized

MOVEMENT

Thermal: Horizontal and Vertical

Seismic: Lateral Shear

MOUNTING Surface

JOINT SIZE 2 inches to 12 inches

LENGTH 10 Linear Feet

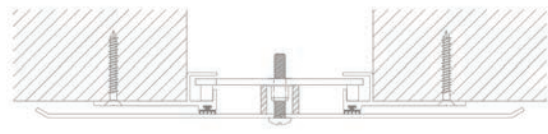
APPLICATION Interior

INSTALLATION Wall or Ceiling

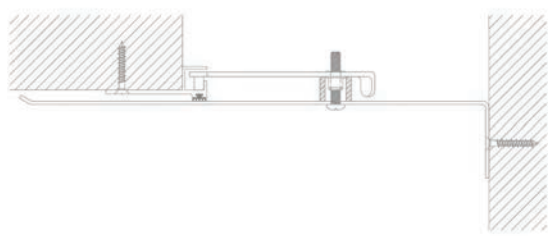
OPTIONS Moisture barrier, Fire barrier, Additional Materials, Sizes and Finishes available upon request

INSTALLATION

WALL/CEILING-TO-WALL/CEILING



WALL/CEILING-TO-CORNER



AS BUILT CONDITIONS MAY VARY. For more information, download our Installation and Operating Manuals (IOM) and Shop Drawings on nystrom.com

ORDER GUIDE

MODEL	APPLICATION	JOINT SIZE AT MEAN T°F	EXPOSED SIGHT LINE	TOTAL MOVEMENT
EJN-FCT-200	Wall/Ceiling to Wall/Ceiling	2" (51mm)	7" (177mm)	2" (51mm)
EJN-FCT-400	Wall/Ceiling to Wall/Ceiling	4" (102mm)	10.5" (267mm)	4" (102mm)
EJN-FCT-600	Wall/Ceiling to Wall/Ceiling	6" (152mm)	13.5" (343mm)	6" (152mm)
EJN-FCT-800	Wall/Ceiling to Wall/Ceiling	8" (203mm)	16.5" (419mm)	8" (203mm)
EJN-FCT-1000	Wall/Ceiling to Wall/Ceiling	10" (254mm)	19.5" (495mm)	10" (254mm)
EJN-FCT-1200	Wall/Ceiling to Wall/Ceiling	12" (305mm)	22.5" (572mm)	12" (305mm)
EJN-FCT-200W	Wall/Ceiling to Corner	2" (51mm)	4.5" (114mm)	1" (25mm)
EJN-FCT-400W	Wall/Ceiling to Corner	4" (102mm)	7.25" (184mm)	2" (51mm)
EJN-FCT-600W	Wall/Ceiling to Corner	6" (152mm)	9.75" (248mm)	3" (76mm)
EJN-FCT-800W	Wall/Ceiling to Corner	8" (203mm)	12.25" (311mm)	4" (102mm)
EJN-FCT-1000W	Wall/Ceiling to Corner	10" (254mm)	14.75" (375mm)	5" (127mm)
EJN-FCT-1200W	Wall/Ceiling to Corner	12" (305mm)	17.25" (438mm)	6" (152mm)

Additional options available, email info@nystrom.com for more information.

Seismic Aluminum Glide Wall & Ceiling System

SYSTEM SURFACE APPLICATION (NBW/NBWw)



BENEFITS

COORDINATING CORNERS Available with corner option for a complete wall and ceiling system.

EASY ASSEMBLY After base plates are attached to the wall, the cover assembly snaps together for a tight fit.

DETAILS

MATERIAL 6063-T5 Aluminum

FINISH Clear Anodized

MOVEMENT

Thermal: Horizontal and Vertical

Seismic: Lateral Shear

MOUNTING Surface

JOINT SIZE 1 inch to 8 inches

LENGTH 10 Linear Feet

APPLICATION Interior

INSTALLATION Wall or Ceiling

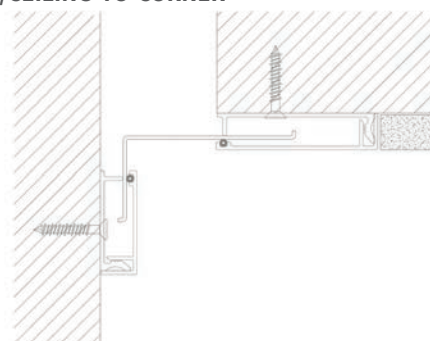
OPTIONS Moisture barrier, Fire barrier, Additional Materials, Sizes and Finishes available upon request

INSTALLATION

WALL/CEILING-TO-WALL/CEILING



WALL/CEILING-TO-CORNER



For more information, download our Installation and Operating Manuals (IOM) and Shop Drawings on nystrom.com

ORDER GUIDE

MODEL	APPLICATION	JOINT SIZE AT MEAN T°F	EXPOSED SIGHT LINE	TOTAL MOVEMENT
EJN-NBW-100	Wall/Ceiling to Wall/Ceiling	1" (25mm)	4.5" (114mm)	1" (25mm)
EJN-NBW-200	Wall/Ceiling to Wall/Ceiling	2" (51mm)	7.5" (191mm)	2" (51mm)
EJN-NBW-300	Wall/Ceiling to Wall/Ceiling	3" (76mm)	8.5" (216mm)	3" (76mm)
EJN-NBW-400	Wall/Ceiling to Wall/Ceiling	4" (102mm)	9.5" (241mm)	4" (102mm)
EJN-NBW-600	Wall/Ceiling to Wall/Ceiling	6" (152mm)	15.5" (394mm)	6" (152mm)
EJN-NBW-800	Wall/Ceiling to Wall/Ceiling	8" (203mm)	17.5" (445mm)	8" (203mm)
EJN-NBW-100W	Wall/Ceiling to Corner	1" (25mm)	2.375" (60mm)	.5" (13mm)
EJN-NBW-200W	Wall/Ceiling to Corner	2" (51mm)	4.375" (111mm)	1" (25mm)
EJN-NBW-300W	Wall/Ceiling to Corner	3" (76mm)	5.375" (137mm)	1.5" (38mm)
EJN-NBW-400W	Wall/Ceiling to Corner	4" (102mm)	6.375" (162mm)	2" (51mm)
EJN-NBW-600W	Wall/Ceiling to Corner	6" (152mm)	10.31" (262mm)	3" (76mm)
EJN-NBW-800W	Wall/Ceiling to Corner	8" (203mm)	12.375" (314mm)	4" (102mm)

Additional options available, email info@nystrom.com for more information.

Seismic Aluminum Wall & Ceiling System

INTERIOR APPLICATION (RJI/RJIw)

BENEFITS

SEISMIC MOVEMENT System realigns itself with the self-centering bar, maintaining a safe, clean look.

COST SAVINGS The mill-finished cover plate offers a budget-friendly alternative to the Seismic Aluminum Wall & Ceiling System - Surface Application (FCT).



DETAILS

MATERIAL

6063-T5 Aluminum, Meets ASTM B221
6061-T6 Aluminum, Meets ASTM B209
5052 H32 Aluminum, Meets ASTM B209

FINISH Mill

MOVEMENT

Thermal: Horizontal and Vertical
Seismic: Lateral Shear

MOUNTING Surface

JOINT SIZE 2 inches to 24 inches, see website for sizes larger than 12 inches

LENGTH 10 Linear Feet

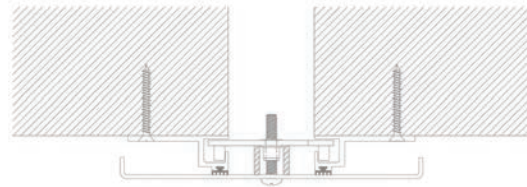
APPLICATION Interior

INSTALLATION Wall or Ceiling

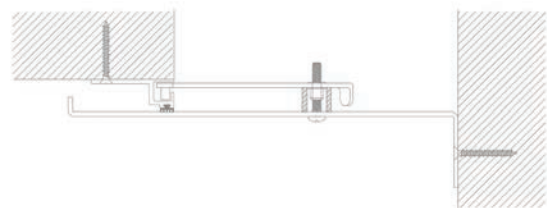
OPTIONS Moisture Barrier, Fire Barrier, Additional Materials, Sizes and Finishes available upon request

INSTALLATION

WALL/CEILING TO WALL/CEILING



WALL/CEILING TO CORNER



For more information, download our *Installation and Operating Manuals (IOM)* and *Shop Drawings* on nystrom.com

ORDER GUIDE

MODEL	APPLICATION	JOINT SIZE AT MEAN T°F	EXPOSED SIGHT LINE	TOTAL MOVEMENT
EJN-RJI-200	Wall/Ceiling to Wall/Ceiling	2" (51mm)	7" (178mm)	2" (51mm)
EJN-RJI-400	Wall/Ceiling to Wall/Ceiling	4" (102mm)	10" (255mm)	4" (102mm)
EJN-RJI-600	Wall/Ceiling to Wall/Ceiling	6" (152mm)	12" (305mm)	6" (152mm)
EJN-RJI-800	Wall/Ceiling to Wall/Ceiling	8" (203mm)	14" (356mm)	8" (203mm)
EJN-RJI-1000	Wall/Ceiling to Wall/Ceiling	10" (254mm)	17" (432mm)	10" (254mm)
EJN-RJI-1200	Wall/Ceiling to Wall/Ceiling	12" (305mm)	20" (508mm)	12" (305mm)
EJN-RJI-200W	Wall/Ceiling to Corner	2" (51mm)	4.5" (114mm)	1" (25mm)
EJN-RJI-400W	Wall/Ceiling to Corner	4" (102mm)	7" (178mm)	2" (51mm)
EJN-RJI-600W	Wall/Ceiling to Corner	6" (152mm)	9" (228mm)	3" (76mm)
EJN-RJI-800W	Wall/Ceiling to Corner	8" (203mm)	11" (280mm)	4" (102mm)
EJN-RJI-1000W	Wall/Ceiling to Corner	10" (254mm)	13.5" (343mm)	5" (127mm)
EJN-RJI-1200W	Wall/Ceiling to Corner	12" (305mm)	16" (406mm)	6" (152mm)

Additional options available, email info@nystrom.com for more information.

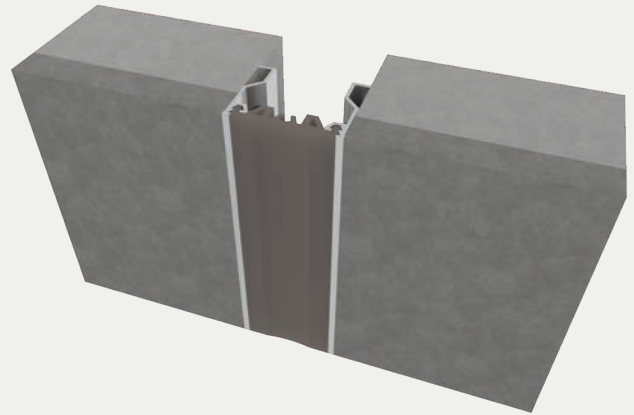
Elastomeric Corridor Wall & Ceiling System

RECESSED APPLICATION (LCWF/LCWFw)

BENEFITS

COMPLEMENTARY SEAL COLORS Available in four elastomeric seal color options: beige, white, gray or black.

CONTINUOUS SIGHT LINE This system can be used on walls, ceilings and corners to provide seamless and continuous aesthetics.



DETAILS

MATERIAL 6063-T5 Aluminum, Meets ASTM B221 and santoprene

FINISH Mill

MOVEMENT Thermal: Horizontal

MOUNTING Flush

JOINT SIZE 1 inch to 3 inches

LENGTH Aluminum 10 Linear Feet, Seals Longest Practical Continuous Length

APPLICATION Interior

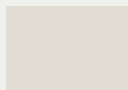
INSTALLATION Wall or Ceiling

OPTIONS Fire barrier, Additional Materials, Sizes and Finishes available upon request

SEAL COLORS



Beige



White



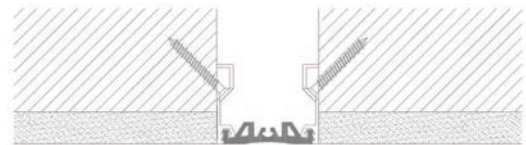
Gray



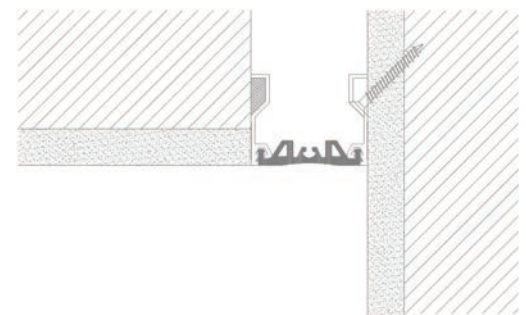
Black

INSTALLATION

WALL/CEILING-TO-WALL/CEILING



WALL/CEILING-TO-CORNER



For more information, download our Installation and Operating Manuals (IOM) and Shop Drawings on nystrom.com

ORDER GUIDE

MODEL	APPLICATION	JOINT SIZE AT MEAN T°F	EXPOSED SIGHT LINE	TOTAL MOVEMENT
EJN-LCWF-100	Wall/Ceiling to Wall/Ceiling	1" (25mm)	1" (25mm)	.5" (13mm)
EJN-LCWF-200	Wall/Ceiling to Wall/Ceiling	2" (51mm)	2" (51mm)	1" (25mm)
EJN-LCWF-300	Wall/Ceiling to Wall/Ceiling	3" (76mm)	3" (76mm)	1.5" (38mm)
EJN-LCWF-100W	Wall/Ceiling to Corner	1" (25mm)	1" (25mm)	.5" (13mm)
EJN-LCWF-200W	Wall/Ceiling to Corner	2" (51mm)	2" (51mm)	1" (25mm)
EJN-LCWF-300W	Wall/Ceiling to Corner	3" (76mm)	3" (76mm)	1.5" (38mm)

Additional options available, email info@nystrom.com for more information.

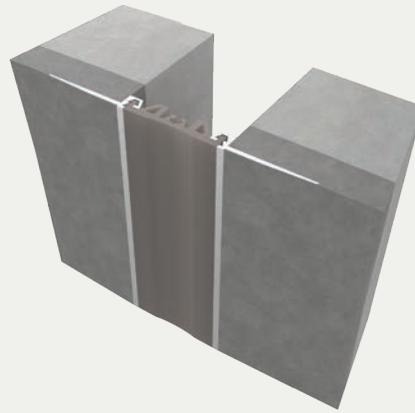
Elastomeric Corridor Wall & Ceiling System

DRYWALL BEAD APPLICATION (LCW/LCWw)

BENEFITS

COMPLEMENTARY SEAL COLORS Available in four elastomeric colors: beige, white, gray or black.

QUICKER INSTALLATION Reduce installation time and labor costs with fast and easy installation.



DETAILS

MATERIAL 6063-T5 Aluminum, Meets ASTM B221 and Santoprene

FINISH Mill

MOVEMENT Thermal: Horizontal

MOUNTING Flush with Drywall Bead

JOINT SIZE 1 inch to 3 inches

LENGTH Aluminum 10 Linear Feet, Seals Longest Practical Continuous Length

APPLICATION Interior

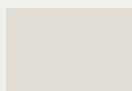
INSTALLATION Wall or Ceiling

OPTIONS Moisture barrier, Fire barrier and Additional Materials, Sizes and Finishes upon request

SEAL COLORS



Beige



White



Gray



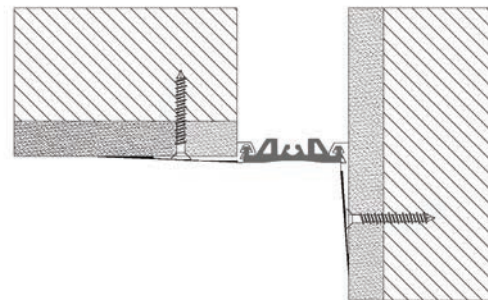
Black

INSTALLATION

WALL/CEILING-TO-WALL/CEILING



WALL/CEILING-TO-CORNER



For more information, download our Installation and Operating Manuals (IOM) and Shop Drawings on nystrom.com

ORDER GUIDE

MODEL	APPLICATION	JOINT SIZE AT MEAN T°F	EXPOSED SIGHT LINE	TOTAL MOVEMENT
EJN-LCW-100	Wall/Ceiling to Wall/Ceiling	1" (25mm)	1" (25mm)	.5" (13mm)
EJN-LCW-200	Wall/Ceiling to Wall/Ceiling	2" (51mm)	2" (51mm)	1" (25mm)
EJN-LCW-300	Wall/Ceiling to Wall/Ceiling	3" (76mm)	3" (76mm)	1.5" (38mm)
EJN-LCW-100W	Wall/Ceiling to Corner	1" (25mm)	1" (25mm)	.5" (13mm)
EJN-LCW-200W	Wall/Ceiling to Corner	2" (51mm)	2" (51mm)	1" (25mm)
EJN-LCW-300W	Wall/Ceiling to Corner	3" (76mm)	3" (76mm)	1.5" (38mm)

Additional sizes available, email info@nystrom.com for more information.

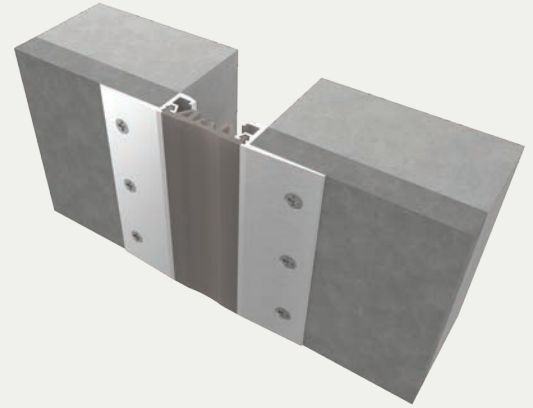
Elastomeric Corridor Wall & Ceiling System

SURFACE APPLICATION (LCWS/LCWSw)

BENEFITS

COMPLEMENTARY SEAL COLORS Available in four elastomeric colors: beige, white, gray or black.

QUICKER INSTALLATION Reduce installation time and labor costs with fast and easy installation.



DETAILS

MATERIAL 6063-T5 Aluminum, Meets ASTM B221 and Santoprene

FINISH Clear Anodized

MOVEMENT Thermal: Horizontal

MOUNTING Surface

JOINT SIZE 1 inch to 3 inches

LENGTH Aluminum 10 Linear Feet, Seals Longest Practical Continuous Length

APPLICATION Interior

INSTALLATION Wall or Ceiling

OPTIONS Moisture barrier, Fire barrier and Additional Materials, Sizes and Finishes upon request

SEAL COLORS



Beige



White



Gray



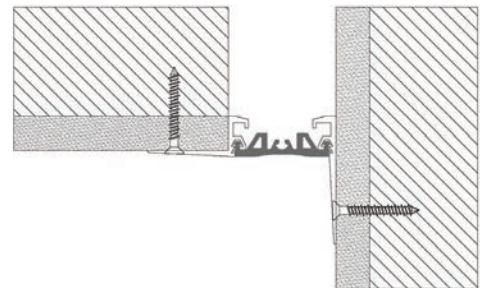
Black

DETAILS

WALL/CEILING-TO-WALL/CEILING



WALL/CEILING-TO-CORNER



For more information, download our Installation and Operating Manuals (IOM) and Shop Drawings on nystrom.com

ORDER GUIDE

MODEL	APPLICATION	JOINT SIZE AT MEAN T°F	EXPOSED SIGHT LINE	TOTAL MOVEMENT
EJN-LCWS-100	Wall/Ceiling to Wall/Ceiling	1" (25mm)	4" (102mm)	.5" (13mm)
EJN-LCWS-200	Wall/Ceiling to Wall/Ceiling	2" (51mm)	5" (127mm)	1" (25mm)
EJN-LCWS-300	Wall/Ceiling to Wall/Ceiling	3" (76mm)	6" (152mm)	1.5" (38mm)
EJN-LCWS-100W	Wall/Ceiling to Corner	1" (25mm)	2.5" (64mm)	.5" (13mm)
EJN-LCWS-200W	Wall/Ceiling to Corner	2" (51mm)	3.5" (89mm)	1" (25mm)
EJN-LCWS-300W	Wall/Ceiling to Corner	3" (76mm)	4.5" (114mm)	1.5" (38mm)

Additional sizes available, email info@nystrom.com for more information.

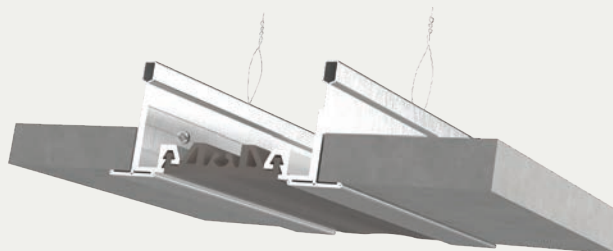
Elastomeric Corridor Ceiling System

ACOUSTICAL TILE APPLICATION (LCA/LCAw)

BENEFITS

ACOUSTIC CEILING Fully integrated with suspended ceiling grid system.

COMPLEMENTARY SEAL COLORS Available in four elastomeric colors: beige, white, gray or black.



DETAILS

MATERIAL 6063-T5 Aluminum, Meets ASTM B221 and Santoprene

FINISH Mill

MOVEMENT Thermal: Horizontal and Vertical

MOUNTING Flush, Suspended

JOINT SIZE 1 inch to 3 inches

LENGTH Aluminum 10 Linear Feet, Seals Longest Practical Continuous Length

APPLICATION Interior

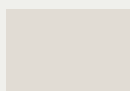
INSTALLATION Ceiling

OPTIONS Additional Materials, Sizes and Finishes upon request

SEAL COLORS



Beige



White



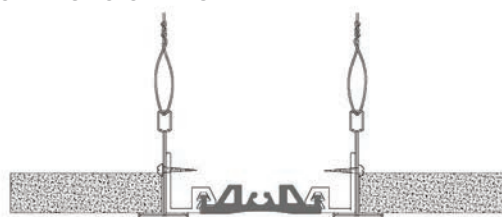
Gray



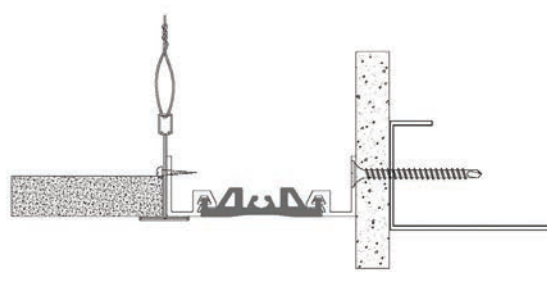
Black

INSTALLATION

CEILING-TO-CEILING



CEILING-TO-CORNER



For more information, download our Installation and Operating Manuals (IOM) and Shop Drawings on nystrom.com

ORDER GUIDE

MODEL	APPLICATION	JOINT SIZE AT MEAN T°F	EXPOSED SIGHT LINE	TOTAL MOVEMENT
EJN-LCA-100	Ceiling to Ceiling	1" (25mm)	1" (25mm)	.5" (13mm)
EJN-LCA-200	Ceiling to Ceiling	2" (51mm)	2" (51mm)	1" (25mm)
EJN-LCA-300	Ceiling to Ceiling	3" (76mm)	3" (76mm)	1.5" (38mm)
EJN-LCA-100W	Ceiling to Ceiling Corner	1" (25mm)	1.37" (35mm)	.5" (13mm)
EJN-LCA-200W	Ceiling to Ceiling Corner	2" (51mm)	2.37" (60mm)	1" (25mm)
EJN-LCA-300W	Ceiling to Ceiling Corner	3" (76mm)	3.37" (85mm)	1.5" (38mm)

Additional sizes available, email info@nystrom.com for more information.

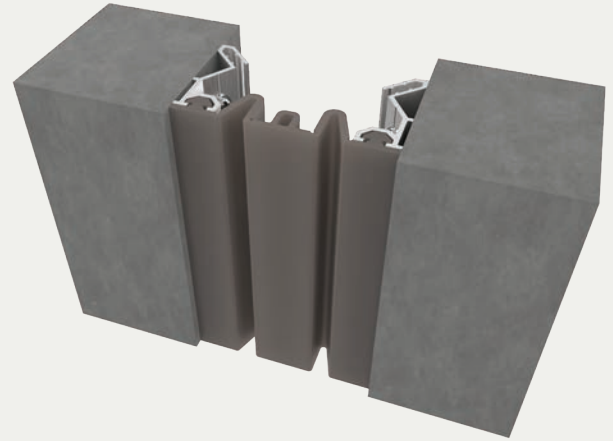
Seismic Elastomeric Wall & Ceiling System

INTERIOR RECESSED APPLICATION (LCH/LCHw)

BENEFITS

MAXIMUM MOVEMENT "V" seal design allows for maximum thermal and seismic movement.

CONTINUOUS SIGHT LINE This system can be used on walls, ceilings and corners to provide seamless and continuous aesthetics.



DETAILS

MATERIAL 6063-T6 Aluminum and Santoprene Seal, Meets ASTM B209

FINISH Mill

MOVEMENT

Thermal: Horizontal and Vertical

Seismic: Lateral Shear

MOUNTING Recessed

JOINT SIZE 2 inches to 24 inches

LENGTH Aluminum 10 Linear Feet, Seals Longest Practical Continuous Length

APPLICATION Interior

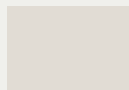
INSTALLATION Wall or Ceiling

OPTIONS Additional Materials and Sizes available upon request

SEAL COLORS



Beige



White



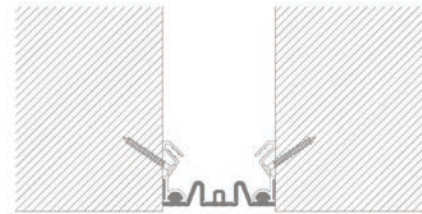
Gray



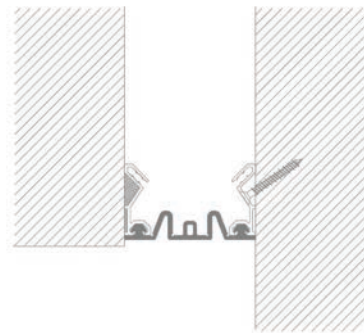
Black

INSTALLATION

WALL/CEILING-TO-WALL/CEILING



WALL/CEILING-TO-CORNER



For more information, download our Installation and Operating Manuals (IOM) and Shop Drawings on nystrom.com

ORDER GUIDE

MODEL	APPLICATION	JOINT SIZE AT MEAN T°F	EXPOSED SIGHT LINE	TOTAL MOVEMENT
EJN-LCH-200	Wall/Ceiling to Wall/Ceiling	2" (51mm)	2" (51mm)	2" (51mm)
EJN-LCH-300	Wall/Ceiling to Wall/Ceiling	3" (76mm)	3" (76mm)	3" (76mm)
EJN-LCH-400	Wall/Ceiling to Wall/Ceiling	4" (102mm)	4" (102mm)	4" (102mm)
EJN-LCH-500	Wall/Ceiling to Wall/Ceiling	5" (127mm)	5" (127mm)	5" (127mm)
EJN-LCH-600	Wall/Ceiling to Wall/Ceiling	6" (152mm)	6" (152mm)	6" (152mm)
EJN-LCH-800	Wall/Ceiling to Wall/Ceiling	8" (203mm)	8" (203mm)	8" (203mm)
EJN-LCH-900	Wall/Ceiling to Wall/Ceiling	9" (229mm)	9" (229mm)	9" (229mm)
EJN-LCH-1000	Wall/Ceiling to Wall/Ceiling	10" (254mm)	10" (254mm)	10" (254mm)
EJN-LCH-1200	Wall/Ceiling to Wall/Ceiling	12" (305mm)	12" (305mm)	12" (305mm)

MODEL	APPLICATION	JOINT SIZE AT MEAN T°F	EXPOSED SIGHT LINE	TOTAL MOVEMENT
EJN-LCH-1500	Wall/Ceiling to Wall/Ceiling	15" (381mm)	15" (381mm)	15" (381mm)
EJN-LCH-1600	Wall/Ceiling to Wall/Ceiling	16" (406mm)	16" (406mm)	16" (406mm)
EJN-LCH-1800	Wall/Ceiling to Wall/Ceiling	18" (457mm)	18" (457mm)	18" (457mm)
EJN-LCH-2000	Wall/Ceiling to Wall/Ceiling	20" (508mm)	20" (508mm)	20" (508mm)
EJN-LCH-2400	Wall/Ceiling to Wall/Ceiling	24" (610mm)	24" (610mm)	24" (610mm)
EJN-LCH-200W	Wall/Ceiling to Corner	2" (51mm)	2" (51mm)	2" (51mm)
EJN-LCH-300W	Wall/Ceiling to Corner	3" (76mm)	3" (76mm)	3" (76mm)
EJN-LCH-400W	Wall/Ceiling to Corner	4" (102mm)	4" (102mm)	4" (102mm)

Additional options available, email info@nystrom.com for more information.

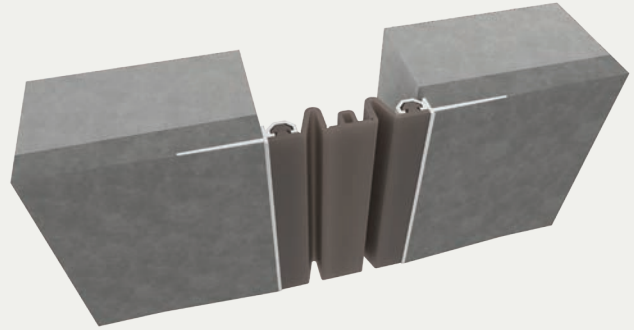
Seismic Elastomeric Corridor Wall & Ceiling System

DRYWALL BEAD APPLICATION (LCD/LCDw)

BENEFITS

MAXIMUM MOVEMENT "V" seal design allows for maximum thermal and seismic movement.

DRYWALL BEAD FLANGE Designed for drywall applications with punched holes for easy mounting. Drywall mud is floated overtop of flange and easily painted leaving only the seal exposed.



DETAILS

MATERIAL 6063-T6 Aluminum, Meets ASTM B209

FINISH Mill

MOVEMENT

Thermal: Horizontal and Vertical

Seismic: Lateral Shear

MOUNTING Flush with drywall bead

JOINT SIZE 2 inches to 6 inches

LENGTH Aluminum 10 Linear Feet, Seals Longest Practical Continuous Length

APPLICATION Interior

INSTALLATION Wall or Ceiling

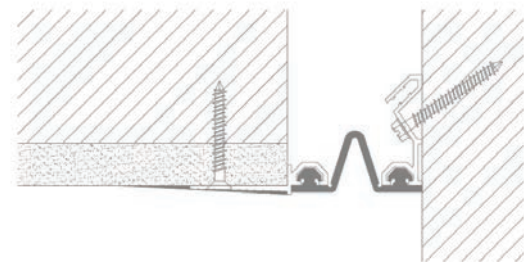
OPTIONS Additional Materials and Sizes available upon request

INSTALLATION

WALL/CEILING-TO-WALL/CEILING



WALL/CEILING-TO-CORNER

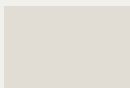


For more information, download our Installation and Operating Manuals (IOM) and Shop Drawings on nystrom.com

SEAL COLORS



Beige



White



Gray



Black

ORDER GUIDE

MODEL	APPLICATION	JOINT SIZE AT MEAN T°F	EXPOSED SIGHT LINE	TOTAL MOVEMENT
EJN-LCD-200	Wall/Ceiling to Wall/Ceiling	2" (51mm)	2" (51mm)	2" (51mm)
EJN-LCD-300	Wall/Ceiling to Wall/Ceiling	3" (76mm)	3" (76mm)	3" (76mm)
EJN-LCD-400	Wall/Ceiling to Wall/Ceiling	4" (102mm)	4" (102mm)	4" (102mm)
EJN-LCD-500	Wall/Ceiling to Wall/Ceiling	5" (127mm)	5" (127mm)	5" (127mm)
EJN-LCD-600	Wall/Ceiling to Wall/Ceiling	6" (152mm)	6" (152mm)	6" (152mm)
EJN-LCD-200W	Wall/Ceiling to Corner	2" (51mm)	2" (51mm)	2" (51mm)
EJN-LCD-300W	Wall/Ceiling to Corner	3" (76mm)	3" (76mm)	3" (76mm)
EJN-LCD-400W	Wall/Ceiling to Corner	4" (102mm)	4" (102mm)	4" (102mm)
EJN-LCD-500W	Wall/Ceiling to Corner	5" (127mm)	5" (127mm)	5" (127mm)
EJN-LCD-600W	Wall/Ceiling to Corner	6" (152mm)	6" (152mm)	6" (152mm)

Additional sizes available, email info@nystrom.com for more information.

Seismic Elastomeric Corridor Wall & Ceiling System

SURFACE APPLICATION (LCS/LCSw)



BENEFITS

MAXIMUM MOVEMENT "V" seal design allows for maximum thermal and seismic movement.

CONTINUOUS SIGHT LINE This system can be used on walls, ceilings and corners to provide seamless and continuous aesthetics.

DETAILS

MATERIAL 6063-T5 Aluminum, Meets ASTM B209

FINISH Mill

MOVEMENT

Thermal: Horizontal and Vertical

Seismic: Lateral Shear

MOUNTING Surface

JOINT SIZE 2 inches to 6 inches

LENGTH Aluminum 10 Linear Feet, Seals Longest Practical Continuous Length

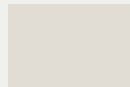
APPLICATION Interior

INSTALLATION Wall or Ceiling

SEAL COLORS



Beige



White



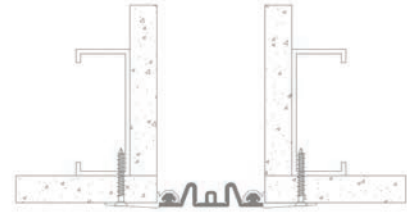
Gray



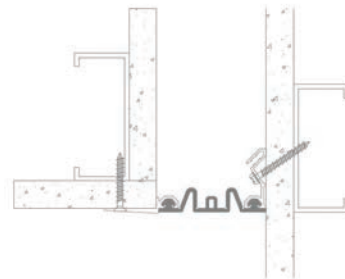
Black

INSTALLATION

WALL/CEILING-TO-WALL/CEILING



WALL/CEILING-TO-CORNER



For more information, download our Installation and Operating Manuals (IOM) and Shop Drawings on nystrom.com

ORDER GUIDE

MODEL	APPLICATION	JOINT SIZE AT MEAN T°F	EXPOSED SIGHT LINE	TOTAL MOVEMENT
EJN-LCS-200	Wall/Ceiling to Wall/Ceiling	2" (51mm)	4.87" (124mm)	2" (51mm)
EJN-LCS-300	Wall/Ceiling to Wall/Ceiling	3" (76mm)	5.87" (149mm)	3" (76mm)
EJN-LCS-400	Wall/Ceiling to Wall/Ceiling	4" (102mm)	6.87" (175mm)	4" (102mm)
EJN-LCS-500	Wall/Ceiling to Wall/Ceiling	5" (127mm)	7.87" (200mm)	5" (127mm)
EJN-LCS-600	Wall/Ceiling to Wall/Ceiling	6" (152mm)	8.87" (226mm)	6" (152mm)
EJN-LCS-200W	Wall/Ceiling to Corner	2" (51mm)	3.5" (87mm)	2" (51mm)
EJN-LCS-300W	Wall/Ceiling to Corner	3" (76mm)	4.5" (113mm)	3" (76mm)
EJN-LCS-400W	Wall/Ceiling to Corner	4" (102mm)	5.5" (138mm)	4" (102mm)
EJN-LCS-500W	Wall/Ceiling to Corner	5" (127mm)	6.5" (164mm)	5" (127mm)
EJN-LCS-600W	Wall/Ceiling to Corner	6" (152mm)	7.5" (189mm)	6" (152mm)

Additional sizes available, email info@nystrom.com for more information.

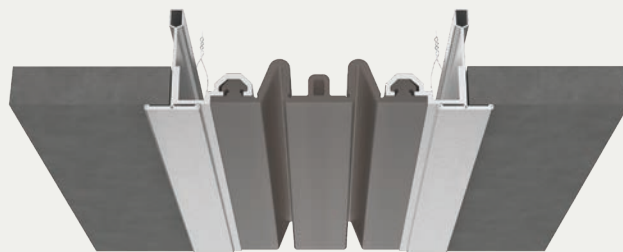
Seismic Elastomeric Corridor Ceiling System

ACOUSTICAL TILE APPLICATION (LCE/LCEw)

BENEFITS

ACOUSTIC CEILING Fully integrated with suspended ceiling grid system.

MAXIMUM MOVEMENT "V" seal design allows for maximum thermal and seismic movement.



DETAILS

MATERIAL 6063-T6 Aluminum, Meets ASTM B209

FINISH Mill

MOVEMENT

Thermal: Horizontal and Vertical

Seismic: Lateral Shear

MOUNTING Flush, Suspended

JOINT SIZE 2 inches to 6 inches

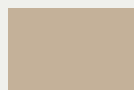
LENGTH Aluminum 10 Linear Feet, Seals Longest Practical Continuous Length

APPLICATION Interior

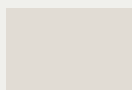
INSTALLATION Ceiling

OPTIONS Additional Materials, Sizes and Finishes available upon request

SEAL COLORS



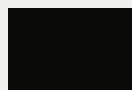
Beige



White



Gray



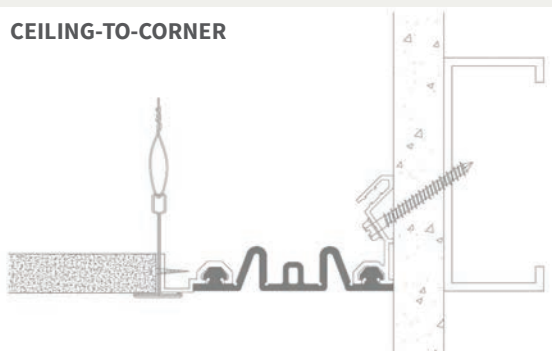
Black

INSTALLATION

CEILING-TO-CEILING



CEILING-TO-CORNER



For more information, download our Installation and Operating Manuals (IOM) and Shop Drawings on nystrom.com

ORDER GUIDE

MODEL	APPLICATION	JOINT SIZE AT MEAN T°F	EXPOSED SIGHT LINE	TOTAL MOVEMENT
EJN-LCE-200	Ceiling to Ceiling	2" (51mm)	Varies Due To T-Grid	2" (51mm)
EJN-LCE-300	Ceiling to Ceiling	3" (76mm)	Varies Due To T-Grid	3" (76mm)
EJN-LCE-400	Ceiling to Ceiling	4" (102mm)	Varies Due To T-Grid	4" (102mm)
EJN-LCE-500	Ceiling to Ceiling	5" (127mm)	Varies Due To T-Grid	5" (127mm)
EJN-LCE-600	Ceiling to Ceiling	6" (152mm)	Varies Due To T-Grid	6" (152mm)
EJN-LCE-200W	Ceiling to Ceiling Corner	2" (51mm)	Varies Due To T-Grid	2" (51mm)
EJN-LCE-300W	Ceiling to Ceiling Corner	3" (76mm)	Varies Due To T-Grid	3" (76mm)
EJN-LCE-400W	Ceiling to Ceiling Corner	4" (102mm)	Varies Due To T-Grid	4" (102mm)
EJN-LCE-500W	Ceiling to Ceiling Corner	5" (127mm)	Varies Due To T-Grid	5" (127mm)
EJN-LCE-600W	Ceiling to Ceiling Corner	6" (152mm)	Varies Due To T-Grid	6" (152mm)

Additional sizes available, email info@nystrom.com for more information.

EXPANSION JOINT SYSTEMS

EXTERIOR SYSTEMS

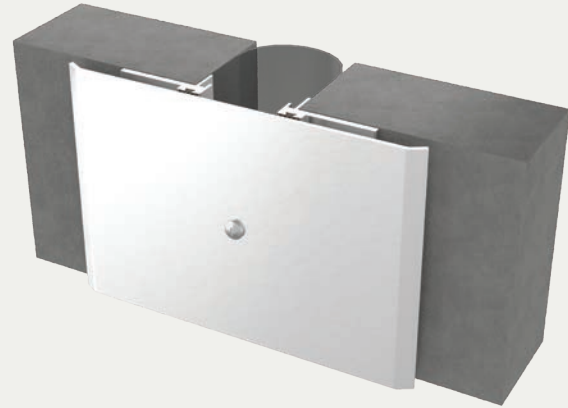
Pages 38-40

Architectural Metals 38-39

Elastomeric Seals 40

Seismic Aluminum Exterior Wall System

SURFACE MOUNT APPLICATION (RJX/RJXw)



BENEFITS

- SEISMIC MOVEMENT** System realigns itself with the self-centering bar, maintaining a safe, clean look.
- WEATHER RESISTANT** The combination of the cover plate and the moisture barrier ensures the elements are kept outside.

DETAILS

MATERIAL

6063-T5 Aluminum, Meets ASTM B221
6061-T6 Aluminum, Meets ASTM B209
5052 H32 Aluminum, Meets ASTM B209

FINISH Clear Anodized

MOVEMENT

Thermal: Horizontal and Vertical
Seismic: Lateral Shear

MOUNTING Surface

JOINT SIZE 2 inches to 12 inches

LENGTH 10 Linear Feet

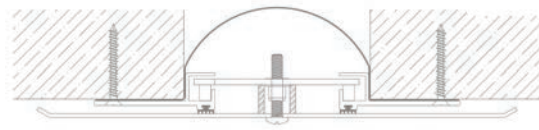
APPLICATION Exterior

INSTALLATION Wall or Ceiling

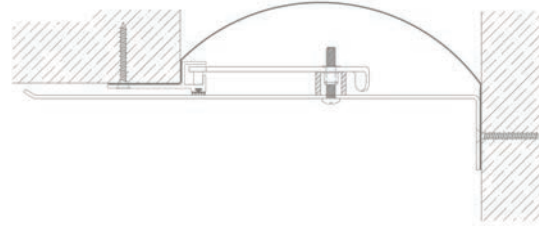
OPTIONS Fire barrier, Additional Materials, Sizes and Finishes available upon request

INSTALLATION

WALL/CEILING TO WALL/CEILING



WALL/CEILING TO CORNER



For more information, download our Installation and Operating Manuals (IOM) and Shop Drawings on nystrom.com

ORDER GUIDE

MODEL	APPLICATION	JOINT SIZE AT MEAN T°F	EXPOSED SIGHT LINE	TOTAL MOVEMENT
EJN-RJX-200	Wall/Ceiling to Wall/Ceiling	2" (51mm)	7" (177mm)	2" (51mm)
EJN-RJX-400	Wall/Ceiling to Wall/Ceiling	4" (102mm)	10.5" (267mm)	4" (102mm)
EJN-RJX-600	Wall/Ceiling to Wall/Ceiling	6" (152mm)	13.5" (343mm)	6" (152mm)
EJN-RJX-800	Wall/Ceiling to Wall/Ceiling	8" (203mm)	16.5" (419mm)	8" (203mm)
EJN-RJX-1000	Wall/Ceiling to Wall/Ceiling	10" (254mm)	19.5" (495mm)	10" (254mm)
EJN-RJX-1200	Wall/Ceiling to Wall/Ceiling	12" (305mm)	22.5" (572mm)	12" (305mm)
EJN-RJX-200W	Wall/Ceiling to Corner	2" (51mm)	4.5" (114mm)	1" (25mm)
EJN-RJX-400W	Wall/Ceiling to Corner	4" (102mm)	7.25" (184mm)	2" (51mm)
EJN-RJX-600W	Wall/Ceiling to Corner	6" (152mm)	9.75" (248mm)	3" (76mm)
EJN-RJX-800W	Wall/Ceiling to Corner	8" (203mm)	12.25" (311mm)	4" (102mm)
EJN-RJX-1000W	Wall/Ceiling to Corner	10" (254mm)	14.75" (375mm)	5" (127mm)
EJN-RJX-1200W	Wall/Ceiling to Corner	12" (305mm)	17.25" (438mm)	6" (152mm)

Additional options available, email info@nystrom.com for more information.

Seismic Aluminum Wall System

EXTERIOR APPLICATION (RJE/RJEw)

BENEFITS

SEISMIC MOVEMENT System realigns itself with the self-centering bar, maintaining a safe, clean look.

WEATHER RESISTANT The combination of the cover plate and the moisture barrier ensures the elements are kept outside.



DETAILS

MATERIAL

6063-T5 Aluminum, Meets ASTM B221

6061-T6 Aluminum, Meets ASTM B209

5052 H32 Aluminum, Meets ASTM B209

FINISH Mill

MOVEMENT

Thermal: Horizontal and Vertical

Seismic: Lateral Shear

MOUNTING Surface

JOINT SIZE 2 inches to 12 inches

LENGTH 10 Linear Feet

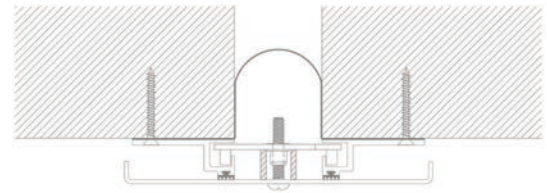
APPLICATION Exterior

INSTALLATION Wall or Ceiling

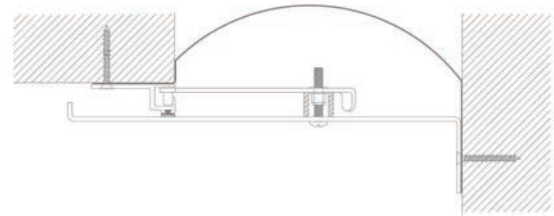
OPTIONS Fire barrier, Additional Materials, Sizes and Finishes available upon request

INSTALLATION

WALL/CEILING TO WALL/CEILING



WALL/CEILING TO CORNER



For more information, download our Installation and Operating Manuals (IOM) and Shop Drawings on nystrom.com

ORDER GUIDE

MODEL	APPLICATION	JOINT SIZE AT MEAN T°F	EXPOSED SIGHT LINE	TOTAL MOVEMENT
EJN-RJE-200	Wall/Ceiling to Wall/Ceiling	2" (51mm)	7" (178mm)	2" (51mm)
EJN-RJE-400	Wall/Ceiling to Wall/Ceiling	4" (102mm)	10" (255mm)	4" (102mm)
EJN-RJE-600	Wall/Ceiling to Wall/Ceiling	6" (152mm)	12" (305mm)	6" (152mm)
EJN-RJE-800	Wall/Ceiling to Wall/Ceiling	8" (203mm)	14" (356mm)	8" (203mm)
EJN-RJE-1000	Wall/Ceiling to Wall/Ceiling	10" (254mm)	17" (432mm)	10" (254mm)
EJN-RJE-1200	Wall/Ceiling to Wall/Ceiling	12" (305mm)	20" (508mm)	12" (305mm)
EJN-RJE-200W	Wall/Ceiling to Corner	2" (51mm)	4.5" (114mm)	1" (25mm)
EJN-RJE-400W	Wall/Ceiling to Corner	4" (102mm)	7" (178mm)	2" (51mm)
EJN-RJE-600W	Wall/Ceiling to Corner	6" (152mm)	9" (228mm)	3" (76mm)
EJN-RJE-800W	Wall/Ceiling to Corner	8" (203mm)	11" (280mm)	4" (102mm)
EJN-RJE-1000W	Wall/Ceiling to Corner	10" (254mm)	13.5" (343mm)	5" (127mm)
EJN-RJE-1200W	Wall/Ceiling to Corner	12" (305mm)	16" (406mm)	6" (152mm)

Additional options available, email info@nystrom.com for more information.

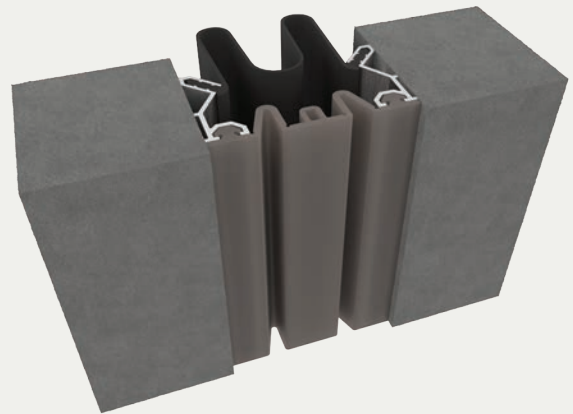
Seismic Elastomeric Wall & Ceiling System

EXTERIOR RECESSED APPLICATION (EWN/EWNw)

BENEFITS

WEATHER RESISTANT The combination of the visual seal and moisture barrier ensures the elements are kept outside.

CONTINUOUS SIGHT LINE This system can be used on walls, ceilings and corners to provide seamless and continuous aesthetics.



DETAILS

MATERIAL 6063-T6 Aluminum and Santoprene Seal, Meets ASTM B209

FINISH Mill

MOVEMENT

Thermal: Horizontal and Vertical

Seismic: Lateral Shear

MOUNTING Recessed

JOINT SIZE 2 inches to 24 inches

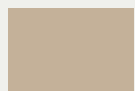
LENGTH Aluminum 10 Linear Feet, Seals Longest Practical Continuous Length

APPLICATION Exterior

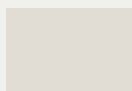
INSTALLATION Wall or Ceiling

OPTIONS Additional Materials, Sizes and Finishes available upon request

SEAL COLORS



Beige



White



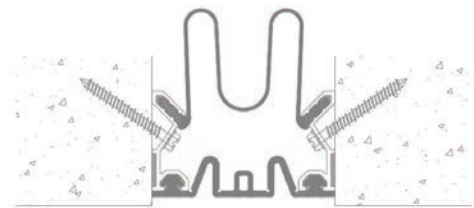
Gray



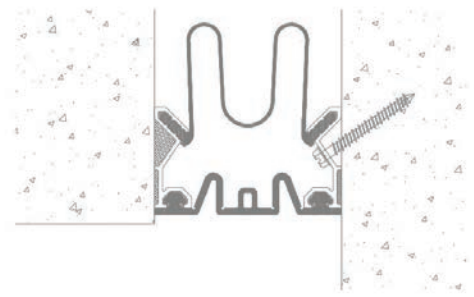
Black

INSTALLATION

WALL/CEILING-TO-WALL/CEILING



WALL/CEILING-TO-CORNER



For more information, download our Installation and Operating Manuals (IOM) and Shop Drawings on nystrom.com

ORDER GUIDE

MODEL	APPLICATION	JOINT SIZE AT MEAN T°F	EXPOSED SIGHT LINE	TOTAL MOVEMENT
EJN-EWN-200	Wall/Ceiling to Wall/Ceiling	2" (51mm)	2" (51mm)	2" (51mm)
EJN-EWN-300	Wall/Ceiling to Wall/Ceiling	3" (76mm)	3" (76mm)	3" (76mm)
EJN-EWN-400	Wall/Ceiling to Wall/Ceiling	4" (102mm)	4" (102mm)	4" (102mm)
EJN-EWN-500	Wall/Ceiling to Wall/Ceiling	5" (127mm)	5" (127mm)	5" (127mm)
EJN-EWN-600	Wall/Ceiling to Wall/Ceiling	6" (152mm)	6" (152mm)	6" (152mm)
EJN-EWN-800	Wall/Ceiling to Wall/Ceiling	8" (203mm)	8" (203mm)	8" (203mm)
EJN-EWN-900	Wall/Ceiling to Wall/Ceiling	9" (229mm)	9" (229mm)	9" (229mm)
EJN-EWN-1000	Wall/Ceiling to Wall/Ceiling	10" (254mm)	10" (254mm)	10" (254mm)
EJN-EWN-1200	Wall/Ceiling to Wall/Ceiling	12" (305mm)	12" (305mm)	12" (305mm)

MODEL	APPLICATION	JOINT SIZE AT MEAN T°F	EXPOSED SIGHT LINE	TOTAL MOVEMENT
EJN-EWN-1500	Wall/Ceiling to Wall/Ceiling	15" (381mm)	15" (381mm)	15" (381mm)
EJN-EWN-1600	Wall/Ceiling to Wall/Ceiling	16" (406mm)	16" (406mm)	16" (406mm)
EJN-EWN-1800	Wall/Ceiling to Wall/Ceiling	18" (457mm)	18" (457mm)	18" (457mm)
EJN-EWN-2000	Wall/Ceiling to Wall/Ceiling	20" (508mm)	20" (508mm)	20" (508mm)
EJN-EWN-2400	Wall/Ceiling to Wall/Ceiling	24" (610mm)	24" (610mm)	24" (610mm)
EJN-EWN-200W	Wall/Ceiling to Corner	2" (51mm)	2" (51mm)	2" (51mm)
EJN-EWN-300W	Wall/Ceiling to Corner	3" (76mm)	3" (76mm)	3" (76mm)
EJN-EWN-400W	Wall/Ceiling to Corner	4" (102mm)	4" (102mm)	4" (102mm)

Additional options available, email info@nystrom.com for more information.

EXPANSION JOINT SYSTEMS

PARKING SYSTEMS

Pages 42-47

Architectural Metals	42-45
Elastomeric Seals	46
JointCrete™	47

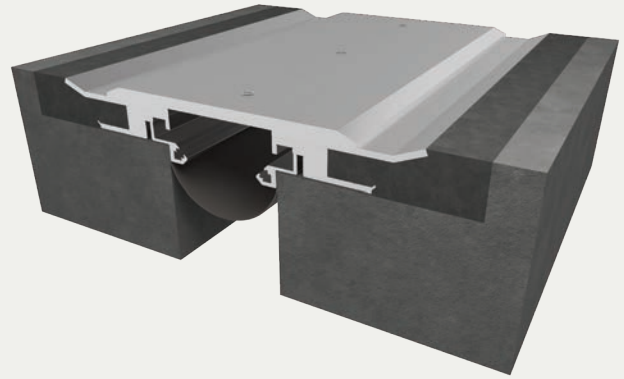
Seismic Aluminum Heavy-Duty Flooring System

RECESSED BLOCKOUT APPLICATION (PTX/PTXw)

BENEFITS

HEAVY-DUTY Engineered for wide joint openings requiring heavy loads and multi-directional movement.

FLUSH TO SURFACE Designed with a smooth transition from deck to substrate.



DETAILS

MATERIAL

6063-T5 Aluminum, Meets ASTM B221
6061-T6 Aluminum, Meets ASTM B209
5052 H32 Aluminum, Meets ASTM B209

FINISH Mill

MOVEMENT

Thermal: Horizontal
Seismic

MOUNTING Blockout

JOINT SIZE 2 inches to 12 inches

LENGTH 10 Linear Feet

APPLICATION Exterior

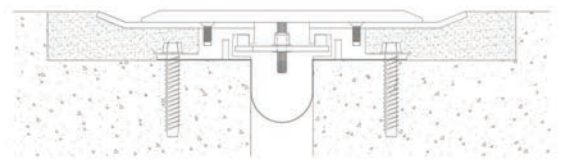
LOAD Vehicular

INSTALLATION Floor or Deck

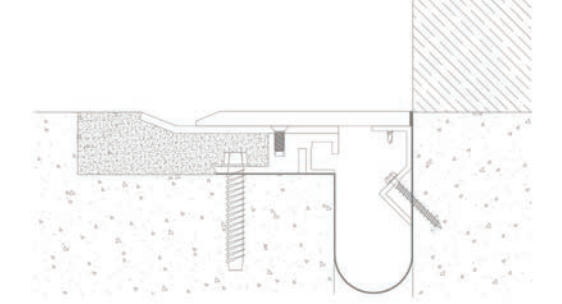
OPTIONS Fire barrier, Additional Materials available upon request

INSTALLATION

DECK-TO-DECK



DECK-TO-WALL



For more information, download our Installation and Operating Manuals (IOM) and Shop Drawings on nystrom.com

ORDER GUIDE

MODEL	APPLICATION	JOINT SIZE AT MEAN T°F	EXPOSED SIGHT LINE	TOTAL MOVEMENT
EJN-PTX-200	Deck to Deck	2" (51mm)	11.75" (298mm)	2" (51mm)
EJN-PTX-400	Deck to Deck	4" (102mm)	12.50" (318mm)	4" (102mm)
EJN-PTX-600	Deck to Deck	6" (152mm)	15.75" (400mm)	6" (152mm)
EJN-PTX-800	Deck to Deck	8" (203mm)	20.37" (518mm)	8" (203mm)
EJN-PTX-1000	Deck to Deck	10" (254mm)	24.50" (622mm)	10" (254mm)
EJN-PTX-1200	Deck to Deck	12" (305mm)	28.50" (724mm)	12" (305mm)
EJN-PTX-200W	Deck to Wall	2" (51mm)	6.87" (175mm)	1" (25mm)
EJN-PTX-400W	Deck to Wall	4" (102mm)	8.25" (210mm)	2" (51mm)
EJN-PTX-600W	Deck to Wall	6" (152mm)	10.87" (276mm)	3" (76mm)
EJN-PTX-800W	Deck to Wall	8" (203mm)	14.12" (359mm)	4" (102mm)
EJN-PTX-1000W	Deck to Wall	10" (254mm)	17.25" (438mm)	5" (127mm)
EJN-PTX-1200W	Deck to Wall	12" (305mm)	20.25" (514mm)	6" (152mm)

Additional options available, email info@nystrom.com for more information.

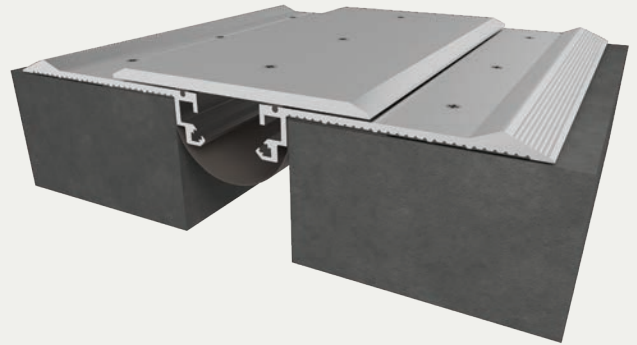
Seismic Aluminum Heavy-Duty Flooring System

SURFACE APPLICATION (PTS/PTSw)

BENEFITS

VEHICLE LOAD This heavy-duty system is designed for low speed vehicular traffic and is commonly used in parking ramps and across walkways.

WATER-RESISTANT Engineered with an integrated moisture barrier for water diversion with easy installation.



DETAILS

MATERIAL

6063-T5 Aluminum, Meets ASTM B221

6061-T6 Aluminum, Meets ASTM B209

FINISH

Mill

MOVEMENT

Thermal: Horizontal

Seismic

MOUNTING

Surface

JOINT SIZE

2 inches to 12 inches

LENGTH

10 Linear Feet

APPLICATION

Exterior

LOAD

Vehicular

INSTALLATION

Floor or Deck

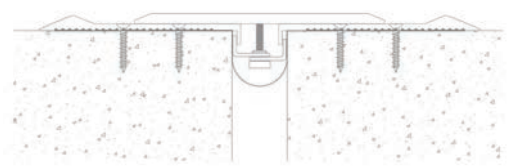
OPTIONS

Fire barrier, Additional Materials available

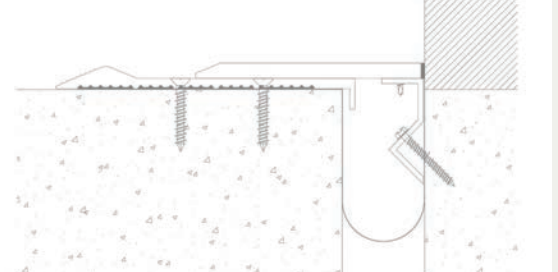
upon request

INSTALLATION

DECK-TO-DECK



DECK-TO-WALL



For more information, download our Installation and Operating Manuals (IOM) and Shop Drawings on nystrom.com

ORDER GUIDE

MODEL	APPLICATION	JOINT SIZE AT MEAN T°F	EXPOSED SIGHT LINE	TOTAL MOVEMENT
EJN-PTS-200	Deck to Deck	2" (51mm)	15.87" (403mm)	2" (51mm)
EJN-PTS-400	Deck to Deck	4" (102mm)	18.06" (459mm)	3.68" (93mm)
EJN-PTS-600	Deck to Deck	6" (152mm)	20.06" (510mm)	6" (152mm)
EJN-PTS-800	Deck to Deck	8" (203mm)	22.06" (560mm)	8" (203mm)
EJN-PTS-1000	Deck to Deck	10" (254mm)	24.06" (611mm)	10" (254mm)
EJN-PTS-1200	Deck to Deck	12" (305mm)	26.06" (662mm)	12" (305mm)
EJN-PTS-200W	Deck to Wall	2" (51mm)	8.94" (227mm)	1" (25mm)
EJN-PTS-400W	Deck to Wall	4" (102mm)	11.06" (280mm)	2" (51mm)
EJN-PTS-600W	Deck to Wall	6" (152mm)	13.06" (331mm)	3" (76mm)
EJN-PTS-800W	Deck to Wall	8" (203mm)	15.06" (382mm)	4" (102mm)
EJN-PTS-1000W	Deck to Wall	10" (254mm)	17.06" (433mm)	5" (127mm)
EJN-PTS-1200W	Deck to Wall	12" (305mm)	19.06" (483mm)	6" (152mm)

Additional options available, email info@nystrom.com for more information.

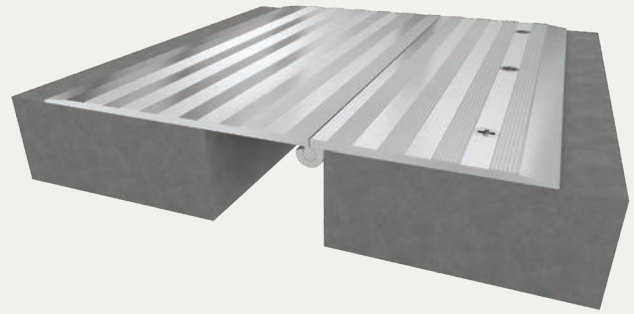
Aluminum Hinged Heavy-Duty System

SURFACE APPLICATION (PD/PDw)

BENEFITS

TRAFFIC LOAD Rated for slow vehicular traffic in parking decks, garages and ports.

DURABLE Constructed with a heavy-duty, hinged cover plate with vertical movement.



DETAILS

MATERIAL 6063-T6 Aluminum, Meets ASTM B209

FINISH Mill

MOVEMENT Thermal: Horizontal and Vertical

MOUNTING Surface

JOINT SIZE 2 inches to 8 inches
(8-inch system is for pedestrian traffic only)

LENGTH 10 Linear Feet

APPLICATION Interior or Exterior

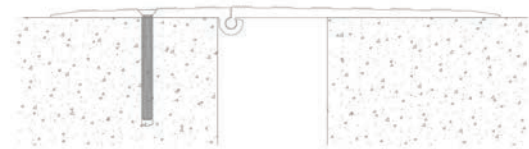
LOAD Vehicle and Pedestrian

INSTALLATION Floor or Deck

OPTIONS Moisture barrier, Fire barrier

INSTALLATION

DECK-TO-DECK



DECK-TO-WALL



For more information, download our Installation and Operating Manuals (IOM) and Shop Drawings on nystrom.com

ORDER GUIDE

MODEL	APPLICATION	JOINT SIZE AT MEAN T°F	EXPOSED SIGHT LINE	PEDESTRIAN TOTAL MOVEMENT	VEHICLE TOTAL MOVEMENT
EJN-PD-200	Deck to Deck	2" (51mm)	8" (204mm)	2.68" (68mm)	1.67" (42mm)
EJN-PD-300	Deck to Deck	3" (76mm)	13.13" (333mm)	5.5" (139mm)	4.5" (114mm)
EJN-PD-400	Deck to Deck	4" (102mm)	16.38" (416mm)	8.75" (222mm)	7.75" (196mm)
EJN-PD-500	Deck to Deck	5" (127mm)	16.38" (416mm)	8.75" (222mm)	7.75" (196mm)
EJN-PD-600	Deck to Deck	6" (152mm)	19.75" (502mm)	10.25" (260mm)	9.25" (234mm)
EJN-PD-800	Deck to Deck	8" (203mm)	19.75" (502mm)	10.25" (260mm)	Pedestrian Only
EJN-PD-200W	Deck to Wall	2" (51mm)	4" (100mm)	2.5" (63mm)	1.5" (38mm)
EJN-PD-300W	Deck to Wall	3" (76mm)	7" (178mm)	5.5" (139mm)	4.5" (114mm)
EJN-PD-400W	Deck to Wall	4" (102mm)	10.25" (260mm)	8.75" (222mm)	7.75" (196mm)
EJN-PD-500W	Deck to Wall	5" (127mm)	10.25" (260mm)	8.75" (222mm)	7.75" (196mm)

Additional options available, email info@nystrom.com for more information.

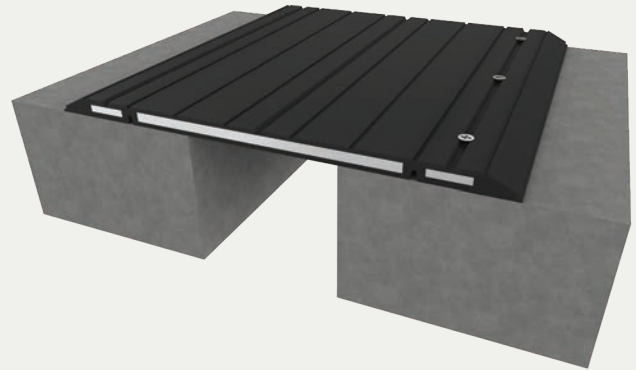
Rubber Coated Heavy Duty System, Surface Application

SURFACE APPLICATION (RCP)

BENEFITS

SOUND DAMPENER The rubber coating with tapered edges assist in reducing noise from vehicle tires.

HEAVY DUTY Designed for low speed vehicular traffic and is commonly used in parking ramps and across walkways and pedestrian traffic.



DETAILS

MATERIAL Steel, Meets ASTM A588

FINISH Rubber Coated

MOVEMENT Thermal: Horizontal and Vertical

MOUNTING Surface

JOINT SIZE 3 to 15 1/8 inches

LENGTH Varies due to model, see shop drawing for specifics

APPLICATION Exterior or Interior

LOAD Vehicle and Pedestrian

INSTALLATION Floor or deck

OPTIONS Moisture barrier, Fire barrier

COMPLIANCE ADA Compliant

INSTALLATION

DECK-TO-DECK



For more information, download our Installation and Operating Manuals (IOM) and Shop Drawings on nystrom.com

SEAL COLORS



Black



Gray

ORDER GUIDE

MODEL	APPLICATION	JOINT SIZE AT MEAN T°F	EXPOSED SIGHT LINE	SERVICE MOVEMENT
EJ-RCP-600N	Deck to Deck	3" (76mm)	12" (305mm)	6" (152mm)
EJ-RCP-1000N	Deck to Deck	5" (127mm)	18" (457mm)	10" (254mm)
EJ-RCP-1200N	Deck to Deck	6" (152mm)	18" (457mm)	12" (305mm)
EJ-RCP-1800N	Deck to Deck	9" (229mm)	24" (610mm)	18" (457mm)
EJ-RCP-2400	Deck to Deck	11.63" (295mm)	29.75" (756mm)	23.25" (591mm)
EJ-RCP-3100	Deck to Deck	15.13" (384mm)	36.75" (933mm)	30.25" (768mm)

Additional options available, email info@nystrom.com for more information.

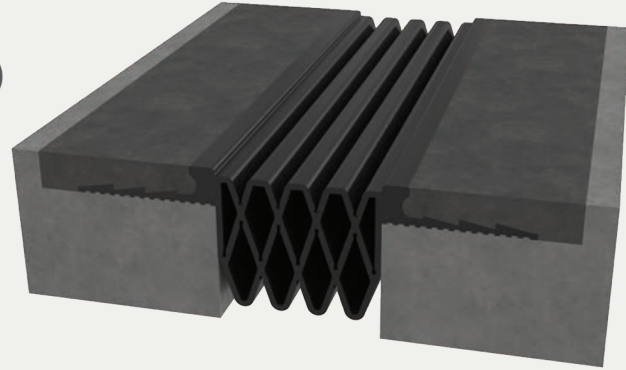
Seismic Wing Parking System

RECESSED BLOCKOUT APPLICATION (WS/WSw)

BENEFITS

WATERTIGHT Designed to provide a continuous, watertight seal under rigorous seismic and low-speed traffic conditions.

HEAVY DUTY Designed for low speed vehicular traffic and is commonly used in parking ramps and across walkways and pedestrian traffic.



DETAILS

MATERIAL Santoprene, 65A Durometer

FINISH Black

MOVEMENT

Thermal: Horizontal and Vertical

Seismic: Lateral Shear

MOUNTING Blockout

JOINT SIZE 2 to 6 Inches

LENGTH Continuous

APPLICATION Exterior

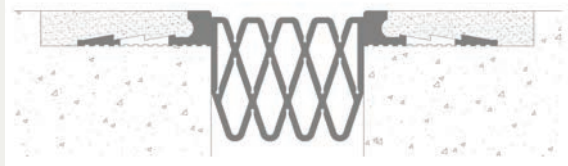
LOAD Vehicular

INSTALLATION Slab or Deck

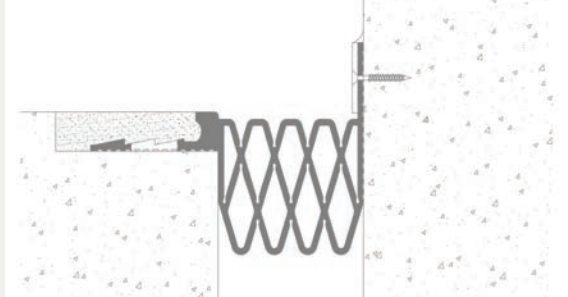
OPTIONS Fire Barrier and Factory Transitions

INSTALLATION

DECK-TO-DECK



DECK-TO-WALL



For more information, download our Installation and Operating Manuals (IOM) and Shop Drawings on nystrom.com

ORDER GUIDE

MODEL	APPLICATION	JOINT SIZE AT MEAN T°F	EXPOSED SIGHT LINE	TOTAL MOVEMENT
EJN-WS-200	Deck to Deck	2" (51mm)	Approx. 2" (51mm)	2.25" (57mm)
EJN-WS-300	Deck to Deck	3" (76mm)	Approx. 3" (76mm)	3" (76mm)
EJN-WS-400	Deck to Deck	4" (102mm)	Approx. 4" (102mm)	4.50" (114mm)
EJN-WS-500	Deck to Corner	5" (127mm)	Approx. 6" (152mm)	5" (127mm)
EJN-WS-600	Deck to Corner	6" (152mm)	Approx. 2" (51mm)	6.5" (165mm)
EJN-WS-200W	Deck to Corner	2" (51mm)	Approx. 3" (76mm)	2.25" (57mm)
EJN-WS-300W	Deck to Corner	3" (76mm)	Approx. 4" (102mm)	3" (76mm)
EJN-WS-400W	Deck to Corner	4" (102mm)	Approx. 6" (152mm)	4.5" (114mm)
EJN-WS-500W	Deck to Corner	5" (127mm)	Approx. 6" (152mm)	5" (127mm)
EJN-WS-600W	Deck to Corner	6" (152mm)	Approx. 6" (152mm)	6.5" (165mm)

Additional options available, email info@nystrom.com for more information.

JointCrete™ Primer

JointCrete™ Header

The perfect system for expansion joint blockouts.
Faster return to service and lasting concrete protection.



BENEFITS

JointCrete Primer is used to prepare a blockout in advance of using JointCrete Header. It provides excellent adhesion to steel, concrete and asphalt. Its lower viscosity provides for better wetting properties which decreases downtime on the jobsite.

BENEFITS

JointCrete Header is used to secure an expansion joint within the blockout. It has the rigidity of concrete with the flexibility of an elastomeric compound. It will preserve and protect concrete decks and substructures against water absorption and spalled edges for many years.

APPEARANCE AT 77°F (25°C)

	PART A	PART B	MIXED
Packaging	1 Can	1 Can	1½ Gallon
Color	Straw	Black	Black
Viscosity (cps)	700 ± 200	8000 ± 1000	
Weight/Gallon (lbs)	9.2 ± 0.2	9.2 ± 0.2	
Yield	120 sq. ft / 1½ Gallon Unit		

APPEARANCE AT 77°F (25°C)

	PART A	PART B	MIXED
Packaging	1 Can	1 Can	With 1 Bag Aggregate
Color	Straw	Black	Black
Viscosity (cps)	550 ± 25	360 ± 50	
Weight/Gallon (lbs)	8.1 ± 0.1	10.2 ± 0.1	
Yield	0.525 cu. ft / kit		

RATIO AND CURE

Mix Ratio	1 Part A	1 Part B	By Volume
	100 Part A	98 Part B	By Weight
Cure	Gel Time at 77°F (25°C)		By Weight
Contact Time	Placement of JointCrete Header; 0-3 Hours at 77°F (25°C)		

RATIO AND CURE

Mix A and B well, then add supplied aggregate			
Mix Ratio	2 Part A	1 Part B	By Volume
	100 Part A	62 Part B	By Weight
Cure	Gel Time at 77°F (25°C)		8 to 12 minutes
Initial Cure	2 Hours at 77°F (25°C)	With supplied aggregate	

STRENGTHS WITH PRIMER ONLY

Percent Elongation	45 ± 10	ASTM D638
Tensile Strength (psi)	2100 ± 200	ASTM D638
Tear Strength (pli)	375 ± 25	ASTM D624
Shore D Hardness	65 ± 5	ASTM D2240
Bond Strength:		
To Dry Concrete	500 psi	Tex 618-J
To Wet Concrete	300 psi	

PROPERTIES WITH AGGREGATE

Comprehensive Strength (psi)	3000 min.	ASTM C579
Resilience at 5 Dfl	98% ± 2	ASTM C579
Brittleness ± ft-lb	7 ft-lb. min.	Ball Drop
Bond Strength (to concrete)	450 psi	ASTM D882
Shore D Hardness	50 min.	ASTM D2240
Splitting Tensile Strength	650 min.	ASTM D3967

Aggregate Type Affects Results

PROPERTIES WITH BINDER ONLY

Percent Elongation	150 min.	ASTM D638
Tensile Strength (psi)	2000 min.	ASTM D638
Tear Strength (psi)	200 min.	ASTM D624

For proper installation instructions, please refer to the JointCrete Header and Primer Installation Instructions. For health and safety information, please refer to the SDS. **KEEP OUT OF REACH OF CHILDREN**

EXPANSION JOINT SYSTEMS

MOISTURE BARRIER

Pages 49

Multi Application

49

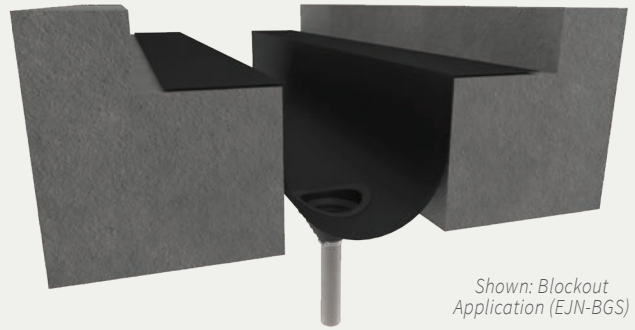
Moisture Barrier System

MULTI APPLICATION (BLOCKOUT BGS / RECESSED RGS / UNDERSLAB UGS)

BENEFITS

DESIGN Complete moisture barrier system for blockout, recessed and underslab applications.

VERSATILE Readily available in multiple widths and lengths and with flat bar and termination bar accessories.



Shown: Blockout Application (EJN-BGS)

DETAILS

MATERIAL 60A Durometer Neoprene

FINISH Black

MOVEMENT

Thermal: Horizontal and Vertical

Seismic: Lateral Shear

MOUNTING Blockout, Recessed, or Underslab

JOINT SIZE 2 to 26 inches

LENGTH 50 ft or 100 ft

APPLICATION Interior and Exterior

INSTALLATION Floor, Slab and Wall

OPTIONS Drain Tube Assembly, Termination Bars

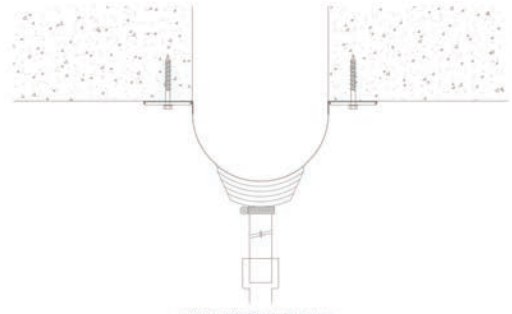
ORDER GUIDE

MODEL	JOINT OPENING AT INSTALLATION	AVAILABLE SIZES	WIDTH	THICKNESS
21941	2" (51mm) to 3" (76mm)	100 ft roll	12" (305mm)	.062"
21942		50 ft roll		
21943	4" (102mm) to 6" (152mm)	100 ft roll	18" (457mm)	.062"
21944		50 ft roll		
21945	7" (178mm) to 10" (254mm)	100 ft roll	24" (610mm)	.062"
21946		50 ft roll		
21947	11" (279mm) to 18" (457mm)	100 ft roll	36" (914mm)	.062"
21948		50 ft roll		
21949	19" (483mm) to 26" (660mm)	100 ft roll	48" (1219mm)	.062"
21950		50 ft roll		

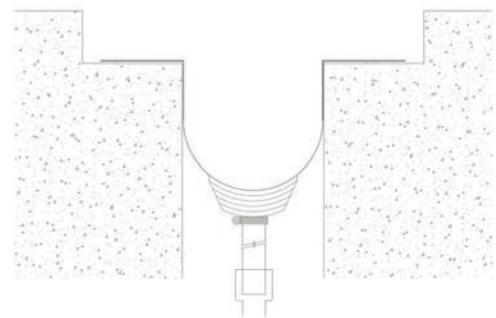
Additional options available, email info@nystrom.com for more information.

INSTALLATION

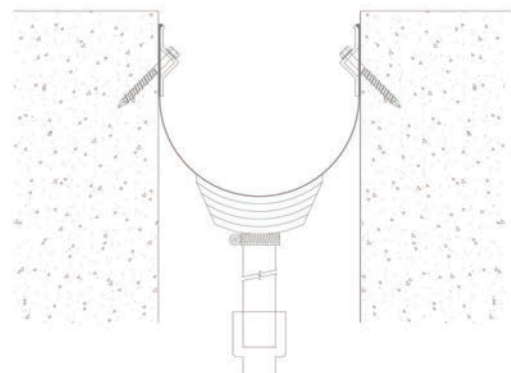
UNDERSLAB APPLICATION (UGS)



BLOCKOUT APPLICATION (BGS)



RECESSED APPLICATION (RGS)



For more information, download our Installation and Operating Manuals (IOM) and Shop Drawings on nystrom.com

EXPANSION JOINT SYSTEMS

SEAL SYSTEMS

Pages 51-62

Pre-Compressed 51-59

Non-Precompressed 60-62

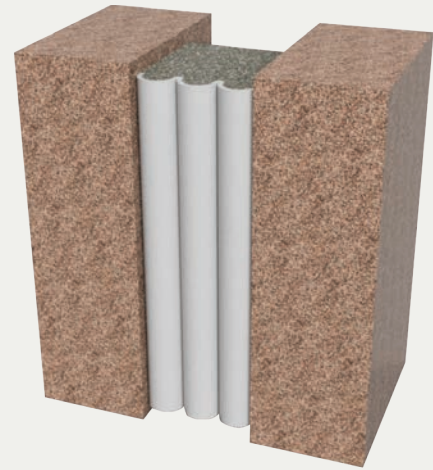
Seismic Pre-Compressed Vertical Foam System

RECESSED APPLICATION (SES)

BENEFITS

COLOR COORDINATING Add a complementary color to your building with one of the available pretinted silicone colors.

OMNI-DIRECTIONAL Curves and abrupt changes in building elements are easily accommodated while maintaining watertightness.



DETAILS

MATERIAL Foam with Silicone Bellow

SIZE ½ inch to 10 inches

Sizes available in ¼-inch increments from 1 inch to 10 inches

Sizes from ½ inch to 1¼ inches are manufactured with a double silicone face bellow

Larger sizes up to 10 inches are manufactured with multiple bellows

LENGTH 6.56 Linear Feet

APPLICATION Interior or Exterior

INSTALLATION Wall

CERTIFICATIONS STC52, OITC38

OPTIONS Terminations, Transitions, Additional Sizes, Seal Depths, Dual Sided, Uncoated and Pick-Resistant Coatings available upon request

MOVEMENT +/- 50% (Total 100%)

ORDER GUIDE

MODEL	JOINT SIZE AT MEAN T°F	SEAL DEPTH
EJN-SES-050	.5" (13mm)	2" (51mm)
EJN-SES-063	.625" (16mm)	2" (51mm)
EJN-SES-075	.75" (19mm)	2" (51mm)
EJN-SES-100	1" (25mm)	2" (51mm)
EJN-SES-200	2" (51mm)	3" (76mm)
EJN-SES-300	3" (76mm)	3" (76mm)
EJN-SES-400	4" (102mm)	4" (102mm)
EJN-SES-500	5" (127mm)	4" (102mm)
EJN-SES-600	6" (152mm)	6" (152mm)
EJN-SES-700	7" (179mm)	6" (152mm)
EJN-SES-800	8" (203mm)	6" (203mm)
EJN-SES-900	9" (229mm)	8" (203mm)
EJN-SES-1000	10" (254mm)	8" (203mm)

Additional options available, email info@nystrom.com for more information.

OPTIONS

TERMINATIONS



TRANSITIONS



For more information, download our Installation and Operating Manuals (IOM) and Shop Drawings on nystrom.com

SEAL COLORS

Black	Limestone	Dusty Rose	Ivory
Bronze	Precast White	Rustic Brick	Off White
Sandstone	Aluminum Stone	Anodized Aluminum	Buff
Adobe Tan	Gray	Charcoal	Champagne
Light Bronze	Dark Bronze	White	

Seismic Pre-Compressed Horizontal Foam System

RECESSED APPLICATION (HES)

BENEFITS

COLOR COORDINATING Add a complementary color to your building with one of the available pretinted silicone colors.

OMNI-DIRECTIONAL Curves and abrupt changes in building elements are easily accommodated while maintaining watertightness.



DETAILS

MATERIAL Foam with Silicone Bellow

SIZE ½ inch to 6 inches

Sizes available in ¼-inch increments from 1 inch to 6 inches

Sizes from ½ inch to 1¼ inches are manufactured with a double silicone face bellow

Larger sizes up to 6 inches are manufactured with multiple bellows

LENGTH 6.56 Linear Feet

APPLICATION Interior or Exterior

INSTALLATION Horizontal (Non-Traffic)

CERTIFICATIONS STC52, OITC38

OPTIONS Terminations, Transitions, Additional Sizes, Seal Depths, Dual Sided, Uncoated and Pick-Resistant Coatings available upon request

MOVEMENT +/- 50% (Total 100%)

ORDER GUIDE

MODEL	JOINT SIZE AT MEAN T°F	SEAL DEPTH
EJN-HES-050	.5" (13mm)	2" (51mm)
EJN-HES-063	.625" (16mm)	2" (51mm)
EJN-HES-075	.75" (19mm)	2" (51mm)
EJN-HES-100	1" (25mm)	2" (51mm)
EJN-HES-200	2" (51mm)	3" (76mm)
EJN-HES-300	3" (76mm)	3" (76mm)
EJN-HES-400	4" (102mm)	4" (102mm)
EJN-HES-500	5" (127mm)	4" (102mm)
EJN-HES-600	6" (152mm)	6" (152mm)

Additional options available, email info@nystrom.com for more information.

OPTIONS

TERMINATIONS



TRANSITIONS



For more information, download our Installation and Operating Manuals (IOM) and Shop Drawings on nystrom.com

SEAL COLORS

Black	Limestone	Dusty Rose	Ivory
Bronze	Precast White	Rustic Brick	Off White
Sandstone	Aluminum Stone	Anodized Aluminum	Buff
Adobe Tan	Gray	Charcoal	Champagne
Light Bronze	Dark Bronze	White	

Seismic Pre-Compressed Parking Deck Foam System

RECESSED APPLICATION (PDM)

BENEFITS

WATERTIGHT This primary seal creates a watertight joint system for decks and stadiums.

TRAFFIC-DURABLE This system holds up against high movement and traffic loads found in parking structures.



DETAILS

MATERIAL Foam with Silicone Bellow

SIZE ½ inch to 4 inches, additional sizes available in ¼-inch increments from 1 to 4 inches. Joints 3 inches and larger will require cover plates.

LENGTH 6.56 Linear Feet

APPLICATION Interior or Exterior

INSTALLATION Floor or Deck

OPTIONS Terminations, Transitions, Additional Sizes, Seal Depths and Dual Sided available upon request

MOVEMENT +/- 50% (Total 100%)

ORDER GUIDE

MODEL	JOINT SIZE AT MEAN T°F	SEAL DEPTH
EJN-PDM-050	.5" (13mm)	2" (51mm)
EJN-PDM-063	.625" (16mm)	2" (51mm)
EJN-PDM-075	.75" (19mm)	2" (51mm)
EJN-PDM-100	1" (25mm)	2" (51mm)
EJN-PDM-200	2" (51mm)	3" (76mm)
EJN-PDM-300	3" (76mm)	3" (76mm)
EJN-PDM-400	4" (102mm)	4" (102mm)

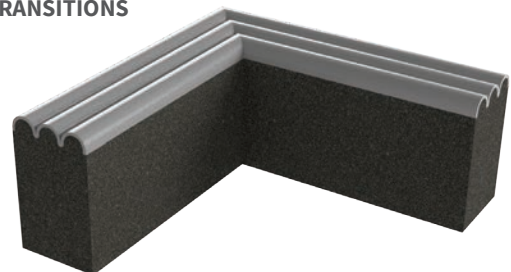
Additional options available, email info@nystrom.com for more information.

OPTIONS

TERMINATIONS



TRANSITIONS



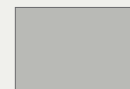
SEAL COLORS



Traffic Grade
Black



Highway
Gray



Concrete
Gray
Standard

Seismic Pre-Compressed Heavy Duty Foam System

RECESSED APPLICATION (PDX)

BENEFITS

WATERTIGHT This primary seal creates a watertight joint system for high traffic areas.

HEAVY-DUTY Patented composite rod system allows this seal to hold up against high movement and heavy pedestrian and cart loads.



DETAILS

MATERIAL Foam with Silicone Bellow

SIZE 1 inch to 4 inches, additional sizes available in 1/2-inch increments from 1 to 4 inches.

LENGTH 6.56 Linear Feet

APPLICATION Interior or Exterior

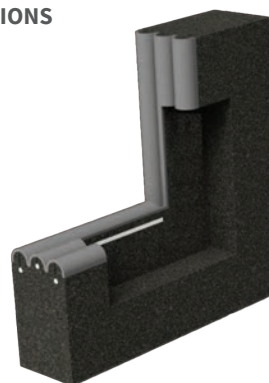
INSTALLATION Floor or Deck

OPTIONS Terminations, Transitions, Additional Sizes, Seal Depths and Dual Sided available upon request

MOVEMENT +/- 50% (Total 100%)

OPTIONS

TRANSITIONS

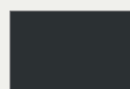


ORDER GUIDE

MODEL	JOINT SIZE AT MEAN T°F	SEAL DEPTH
EJN-PDX-100	1" (25mm)	2" (51mm)
EJN-PDX-150	1.5" (38mm)	2" (51mm)
EJN-PDX-200	2" (51mm)	3" (76mm)
EJN-PDX-250	2.5" (64mm)	3" (76mm)
EJN-PDX-300	3" (76mm)	3" (76mm)
EJN-PDX-350	3.5" (89mm)	3" (76mm)
EJN-PDX-400	4" (102mm)	4" (102mm)

Additional options available, email info@nystrom.com for more information.

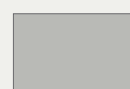
SEAL COLORS



Traffic Grade
Black



Highway
Gray



Traffic
Gray
(Standard)

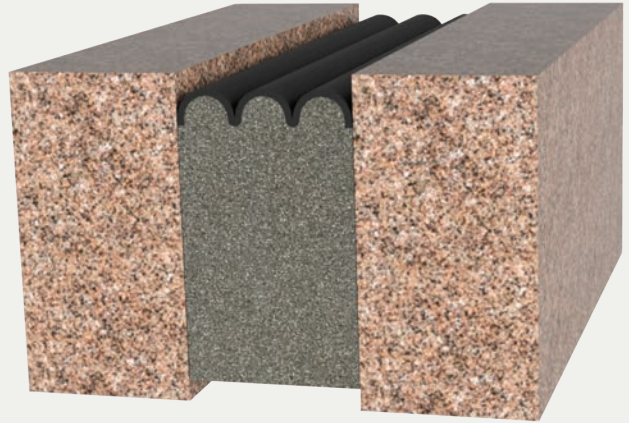
Seismic Pre-Compressed Highway Foam System

RECESSED APPLICATION (DOT)

BENEFITS

WATERTIGHT This primary seal creates a watertight joint system for bridges and highways.

HIGHWAY-DURABLE This system holds up against the continuous movement and traffic loads of roads and highways.



DETAILS

MATERIAL Foam with Silicone Bellow

SIZE ½ inch to 3 inches
Sizes available in ¼-inch increments from 1 to 3 inches

LENGTH 6.56 Linear Feet

APPLICATION Interior or Exterior

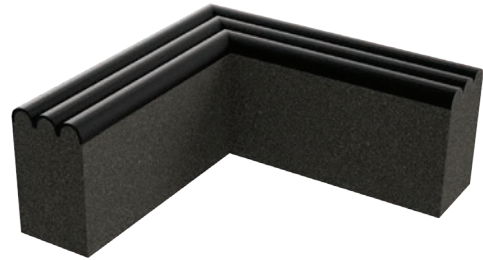
INSTALLATION Slab or Deck

OPTIONS Terminations, Transitions, Additional Sizes, Seal Depths and Dual Sided available upon request

MOVEMENT +/- 50% (Total 100%)

OPTIONS

TRANSITIONS



ORDER GUIDE

MODEL	APPLICATION	JOINT SIZE AT MEAN T°F	SEAL DEPTH
EJN-DOT-050	Deck to Deck/Corner	.5" (13mm)	2" (51mm)
EJN-DOT-063	Deck to Deck/Corner	.625" (16mm)	2" (51mm)
EJN-DOT-075	Deck to Deck/Corner	.75" (19mm)	2" (51mm)
EJN-DOT-100	Deck to Deck/Corner	1" (25mm)	2" (51mm)
EJN-DOT-200	Deck to Deck/Corner	2" (51mm)	3" (76mm)
EJN-DOT-300	Deck to Deck/Corner	3" (76mm)	3" (76mm)

Additional options available, email info@nystrom.com for more information.

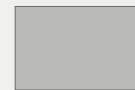
COLORS



Traffic Grade
Black
Standard



Highway
Gray



Concrete
Gray

Acoustic Vertical Foam System

RECESSED APPLICATION (QTT)

BENEFITS

AESTHETIC GAP FILLER The acoustic QTT is sealant faced on customer-selected sides and provides optimal glass window aesthetics.

THERMALLY INSULATING Insulates and controls thermal energy loss from room to room and through glazing.



DETAILS

MATERIAL Foam with Silicone Facing

SIZE 1 inch to 6 inches in ¼-inch increments

LENGTH 6.56 Linear Feet

APPLICATION Interior Wall or Glass Surface

INSTALLATION Wall

OPTIONS Single, Double, Triple-Sided, Additional Sizes and Seal Depths available upon request

CERTIFICATIONS ASTM C518, E90 STC 51 and OITC 40 tested in a STC 55 / OITC 42 base wall

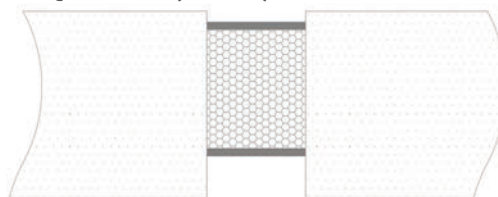
ORDER GUIDE

MODEL	JOINT SIZE AT MEAN T°F	SEAL DEPTH
EJN-QTT-100	1" (25mm)	2" (51mm)
EJN-QTT-200	2" (51mm)	3" (76mm)
EJN-QTT-300	3" (76mm)	3" (76mm)
EJN-QTT-400	4" (102mm)	4" (102mm)
EJN-QTT-500	5" (127mm)	4" (102mm)
EJN-QTT-600	6" (152mm)	4" (102mm)

Additional options available, email info@nystrom.com for more information.

OPTIONS

EJN-QTT SERIES (2 SIDES)



EJN-QTT-TS SERIES (3 SIDES)



For more information, download our Installation and Operating Manuals (IOM) and Shop Drawings on nystrom.com

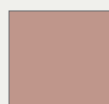
SEAL COLORS



Black



Limestone



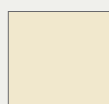
Dusty Rose



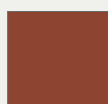
Ivory



Bronze



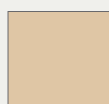
Precast White



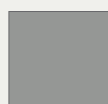
Rustic Brick



Off White



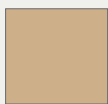
Sandstone



Aluminum Stone



Anodized Aluminum



Buff



Adobe Tan



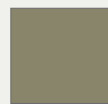
Gray



Charcoal



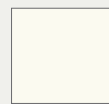
Champagne



Light Bronze



Dark Bronze



White

1-, 2- or 3-Hour Rated Seismic Pre-Compressed Vertical Foam System

RECESSED APPLICATION (FES1/FES2/FES3)

BENEFITS

FIRE-RATED This 1, 2 or 3 hour fire-rated wall expansion joint is watertight, and a primary seal for repair, retrofit and new installations.

MULTI-FUNCTIONAL This seal provides water and fire protection, color coordination, thermal insulation, sound attenuation and structural joint movement.



DETAILS

MATERIAL Foam with Silicone Bellows

SIZE ½ inch to 6 inches

1 hour: ½ to 4 inches

2 and 3 hour: ½ to 6 inches

Additional sizes available in ¼-inch increments from 1 inch to 6 inches

LENGTH 6.56 Linear Feet

APPLICATION Interior or Exterior

INSTALLATION Wall

CERTIFICATIONS UL 2079, ASTM E1966, E119, E1399, E90, and C518

OPTIONS Terminations, Transitions, Additional Sizes, Single-Sided, Uncoated and Pick-Resistant Coatings available upon request

MOVEMENT

Standard: +/- 50% (Total 100%)

Also available in +/- 25% (Total 50%)

OPTIONS

TERMINATIONS



TRANSITIONS



For more information, download our Installation and Operating Manuals (IOM) and Shop Drawings on nystrom.com

SEAL COLORS

Black	Limestone	Dusty Rose	Ivory	Bronze	Precast White	Rustic Brick	Off White	Sandstone	Aluminum Stone
Anodized Aluminum	Buff	Adobe Tan	Gray	Charcoal	Champagne	Light Bronze	Dark Bronze	White	

ORDER GUIDE

MODEL	JOINT SIZE AT MEAN T°F	TOTAL MOVEMENT	MODEL	JOINT SIZE AT MEAN T°F	TOTAL MOVEMENT	MODEL	JOINT SIZE AT MEAN T°F	TOTAL MOVEMENT
EJN-FES1-050	.5" (13mm)	4" (102mm)	EJN-FES2-050	.5" (13mm)	4" (102mm)	EJN-FES3-050	.5" (13mm)	4" (102mm)
EJN-FES1-075	.75" (19mm)	4" (102mm)	EJN-FES2-075	.75" (19mm)	4" (102mm)	EJN-FES3-075	.75" (19mm)	4" (102mm)
EJN-FES1-100	1" (25mm)	4" (102mm)	EJN-FES2-100	1" (25mm)	4" (102mm)	EJN-FES3-100	1" (25mm)	4" (102mm)
EJN-FES1-200	2" (51mm)	4" (102mm)	EJN-FES2-200	2" (51mm)	4" (102mm)	EJN-FES3-200	2" (51mm)	4" (102mm)
EJN-FES1-300	3" (76mm)	4" (102mm)	EJN-FES2-300	3" (76mm)	4" (102mm)	EJN-FES3-300	3" (76mm)	4" (102mm)
EJN-FES1-400	4" (102mm)	4" (102mm)	EJN-FES2-400	4" (102mm)	4" (102mm)	EJN-FES3-400	4" (102mm)	4" (102mm)
			EJN-FES2-500	5" (127mm)	4" (102mm)	EJN-FES3-500	5" (127mm)	4" (102mm)
			EJN-FES2-600	6" (152mm)	4" (102mm)	EJN-FES3-600	6" (152mm)	4" (102mm)

Additional options available, email info@nystrom.com for more information.

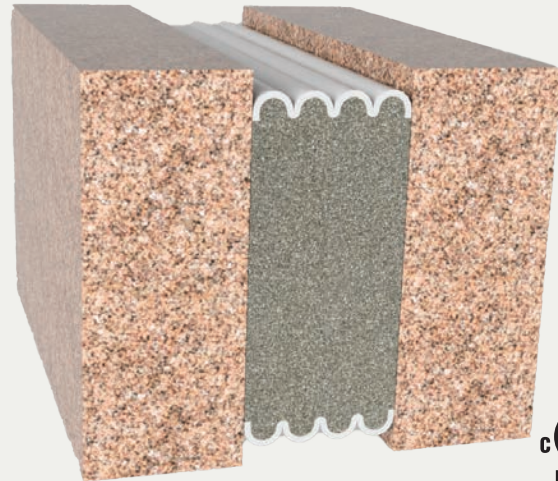
1-, 2- or 3-Hour Rated Seismic Pre-Compressed Horizontal Foam System

RECESSED APPLICATION (FHES1/FHES2/FHES3)

BENEFITS

FIRE-RATED This 1-, 2- or 3-hour fire-rated horizontal expansion joint is watertight, and a primary seal for repair, retrofit and new installations.

MULTI-FUNCTIONAL This seal provides water and fire protection, color coordination, thermal insulation, sound attenuation and structural joint movement.



DETAILS

MATERIAL Foam with Silicone Bellow

SIZE

2 hour available ½ inches to 5 inches
1 hour & 3 hour available ½ inch to 4 inches
Additional sizes available in ¼ inch increments from 1 inch and larger

LENGTH 6.56 Linear feet

APPLICATION Interior or Exterior

INSTALLATION Floor, Deck and Ceiling

CERTIFICATIONS UL 2079, ASTM E1966, E119, E1399, E90 and C518

OPTIONS Terminations, Transitions, Additional Sizes, Single-Sided, Uncoated and Pick-Resistant Coatings available upon request

MOVEMENT

Standard: +/- 50% (Total 100%)
Also Available In: +/- 25% (Total 50%)

OPTIONS

TERMINATIONS



TRANSITIONS



For more information, download our Installation and Operating Manuals (IOM) and Shop Drawings on nystrom.com

SEAL COLORS



ORDER GUIDE

MODEL	JOINT SIZE AT MEAN T°F	TOTAL MOVEMENT	MODEL	JOINT SIZE AT MEAN T°F	TOTAL MOVEMENT	MODEL	JOINT SIZE AT MEAN T°F	TOTAL MOVEMENT
EJN-FHES1-050	.5" (13mm)	4" (102mm)	EJN-FHES2-050	.5" (13mm)	4" (102mm)	EJN-FHES3-050	.5" (13mm)	4" (102mm)
EJN-FHES1-075	.75" (19mm)	4" (102mm)	EJN-FHES2-075	.75" (19mm)	4" (102mm)	EJN-FHES3-075	.75" (19mm)	4" (102mm)
EJN-FHES1-100	1" (25mm)	4" (102mm)	EJN-FHES2-100	1" (25mm)	4" (102mm)	EJN-FHES3-100	1" (25mm)	4" (102mm)
EJN-FHES1-200	2" (51mm)	4" (102mm)	EJN-FHES2-200	2" (51mm)	4" (102mm)	EJN-FHES3-200	2" (51mm)	4" (102mm)
EJN-FHES1-300	3" (76mm)	4" (102mm)	EJN-FHES2-300	3" (76mm)	4" (102mm)	EJN-FHES3-300	3" (76mm)	4" (102mm)
EJN-FHES1-400	4" (102mm)	4" (102mm)	EJN-FHES2-400	4" (102mm)	4" (102mm)	EJN-FHES3-400	4" (102mm)	4" (102mm)
			EJN-FHES2-500	5" (127mm)	4" (102mm)			

Additional options available, email info@nystrom.com for more information.

Pre-Compressed Primary Foam System

VERTICAL APPLICATION (PBF)

BENEFITS

The Nystrom Pre-Compressed Primary Foam system is specifically suited for vertical applications. The breathability and ability to keep dust and debris out of environments is unmatched. Suitable for exterior and interior applications.

- Allows air to pass through while keeping dust/debris out.
- R-Value: 2.8 per inch of depth



DETAILS

MATERIAL

Open cell foam

SIZE 1/8 inches to 4 inches

LENGTH For joint widths smaller than 2 inches (51mm) product will be supplied in roll form. Roll length will vary by size.

For joint widths smaller than 2 inches (51mm) and larger, product will be supplied in 6.5 foot (2 meter) sticks.

APPLICATION Exterior and Interior

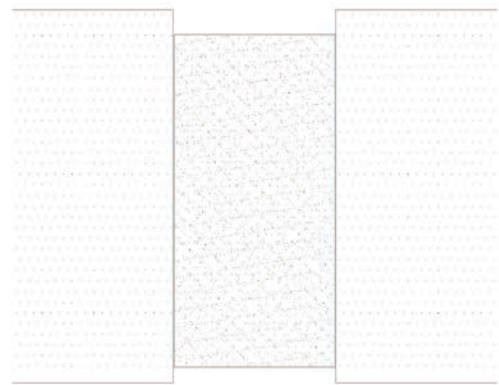
INSTALLATION Wall

CERTIFICATIONS C518

EXPOSED FINISH Black (prior to any optional wet seal)

MOVEMENT +/- 25% Nominal Joint Width

INSTALLATION



For more information, download our Installation and Operating Manuals (IOM) and Shop Drawings on nystrom.com

ORDER GUIDE

MODEL	JOINT SIZE AT MEAN T°F	SEAL DEPTH
EJN-PBF-013	.125" (3mm)	.375" (10mm)
EJN-PBF-019	.1875" (5mm)	.375" (10mm)
EJN-PBF-025	.25" (6mm)	.75" (19mm)
EJN-PBF-038	.1667" (10mm)	.75" (19mm)
EJN-PBF-050	.5" (13mm)	.75" (19mm)
EJN-PBF-063	.625" (16mm)	1" (25mm)
EJN-PBF-075	.75" (19mm)	1" (25mm)
EJN-PBF-100	1" (25mm)	1.5" (38mm)
EJN-PBF-200	2" (51mm)	3" (76mm)
EJN-PBF-300	3" (76mm)	3" (76mm)
EJN-PBF-400	4" (102mm)	4" (102mm)

Additional options available, email info@nystrom.com for more information.

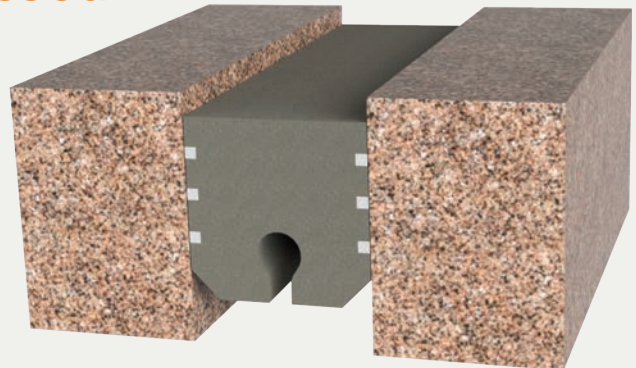
Uncoated Non-Precompressed Closed Cell Foam System

RECESSED APPLICATION (ESU)

BENEFITS

SIMPLICITY Minimal components and flexibility of seal allows for quick joint repairs and short traffic closures.

TRAFFIC CAPABLE Water tight, closed cell foam system that doesn't require invasive anchoring.



DETAILS

MATERIAL Closed Cell Foam Core

SIZE 1/2 inch to 10 inches

Sizes available in 1/4-inch increments starting at 1/2 inch
Product supplied uncompressed at a standard 25% larger than the mean joint size

LENGTH 6 Linear Feet

APPLICATION Interior or Exterior

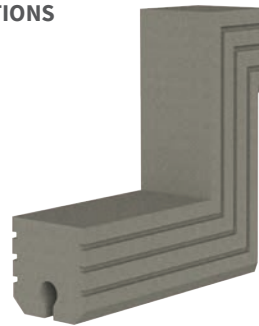
INSTALLATION Ceiling, Wall or Floor

OPTIONS Terminations, Transitions, Additional Sizes, Seal Depths and Pick-Resistant Coatings available upon request

MOVEMENT +/- 25% (Total 50%)

OPTIONS

TRANSITIONS

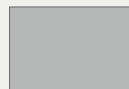


ORDER GUIDE

MODEL	APPLICATION	JOINT SIZE AT MEAN T°F	SEAL DEPTH
EJN-ESU-050	Surface	.5" (13mm)	1.5" (38mm)
EJN-ESU-063	Surface	.625" (16mm)	1.5" (38mm)
EJN-ESU-075	Surface	.75" (19mm)	1.5" (38mm)
EJN-ESU-100	Surface	1" (25mm)	1.5" (38mm)
EJN-ESU-200	Surface	2" (51mm)	2" (51mm)
EJN-ESU-300	Surface	3" (76mm)	2" (51mm)
EJN-ESU-400	Surface	4" (102mm)	3" (76mm)
EJN-ESU-500	Surface	5" (127mm)	3" (76mm)
EJN-ESU-600	Surface	6" (152mm)	4" (102mm)
EJN-ESU-700	Surface	7" (178mm)	4" (102mm)
EJN-ESU-800	Surface	8" (203mm)	4" (102mm)
EJN-ESU-900	Surface	9" (229mm)	4" (102mm)
EJN-ESU-1000	Surface	10" (254mm)	4" (102mm)

Additional options available, email info@nystrom.com for more information.

COLOR



Gray

Traffic Coated Non-Precompressed Closed Cell Foam System

RECESSED APPLICATION (ESH)

BENEFITS

TRAFFIC CAPABLE Water tight, closed cell foam and traffic-grade sealant-faced system that doesn't require invasive anchoring.

HYDROSTATIC APPLICATION Standard system can accommodate up to 10 feet of hydrostatic pressure.



DETAILS

MATERIAL Closed cell foam with traffic grade sealant facer

SIZE ½ inch to 4 inches
 Sizes available in ¼-inch increments starting at ½ inch
 Product supplied uncompressed at a standard 25% larger than the mean joint size

LENGTH 6 Linear Feet

APPLICATION Interior or Exterior

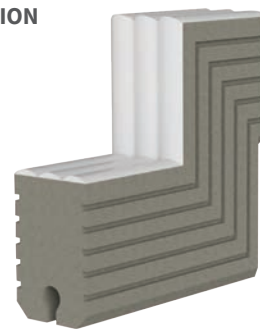
INSTALLATION Floor or Deck

OPTIONS Terminations, Transitions, Additional Sizes, Seal Depths and Pick-Resistant Coatings available upon request

MOVEMENT +/- 25% (Total 50%)

OPTIONS

TRANSITION

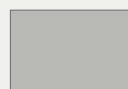


ORDER GUIDE

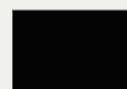
MODEL	JOINT SIZE AT MEAN T°F	SEAL DEPTH
EJN-ESH-050	.5" (13mm)	1.5" (38mm)
EJN-ESH-063	.625" (16mm)	1.5" (38mm)
EJN-ESH-075	.75" (19mm)	1.5" (38mm)
EJN-ESH-100	1" (25mm)	1.5" (38mm)
EJN-ESH-200	2" (51mm)	3" (76mm)
EJN-ESH-300	3" (76mm)	3" (76mm)
EJN-ESH-400	4" (102mm)	4" (102mm)

Additional options available, email info@nystrom.com for more information.

COLORS



Concrete
Gray
(Standard)



Traffic Grade
Black



Highway
Gray

Coated Non-Precompressed Closed Cell Foam System

RECESSED APPLICATION (ESV)

BENEFITS

SIMPLICITY Minimal components and flexibility of seal allows for quick joint repairs.

HYDROSTATIC APPLICATION Standard system can accommodate up to 10 feet of hydrostatic pressure for below grade application.



DETAILS

MATERIAL Low Density, Closed Cell Foam with Silicone

SIZE ½ inch to 10 inches

Sizes available in ¼-inch increments starting at ½ inch
Product supplied uncompressed at a standard 25% larger than the mean joint size

LENGTH 6 Linear Feet

APPLICATION Interior or Exterior

INSTALLATION Ceiling, Wall or Floors (non-traffic)

OPTIONS Terminations, Transitions, Additional Sizes, Seal Depths and Pick-Resistant Coatings available upon request

MOVEMENT +/- 25% (Total 50%)

OPTIONS

TRANSITION



ORDER GUIDE

MODEL	APPLICATION	JOINT SIZE AT MEAN T°F	SEAL DEPTH
EJN-ESV-050	Surface	.5" (13mm)	1.5" (38mm)
EJN-ESV-063	Surface	.625" (16mm)	1.5" (38mm)
EJN-ESV-075	Surface	.75" (19mm)	1.5" (38mm)
EJN-ESV-100	Surface	1" (25mm)	1.5" (38mm)
EJN-ESV-200	Surface	2" (51mm)	2" (51mm)
EJN-ESV-300	Surface	3" (76mm)	2" (51mm)
EJN-ESV-400	Surface	4" (102mm)	3" (76mm)
EJN-ESV-500	Surface	5" (127mm)	3" (76mm)
EJN-ESV-600	Surface	6" (152mm)	4" (102mm)
EJN-ESV-700	Surface	7" (178mm)	4" (102mm)
EJN-ESV-800	Surface	8" (203mm)	4" (102mm)
EJN-ESV-900	Surface	9" (229mm)	4" (102mm)
EJN-ESV-1000	Surface	10" (254mm)	4" (102mm)

Additional options available, email info@nystrom.com for more information.

SEAL COLORS

Black	Limestone	Dusty Rose	Ivory
Bronze	Precast White	Rustic Brick	Off White
Sandstone	Aluminum Stone	Anodized Aluminum	Buff
Adobe Tan	Gray	Charcoal	Champagne
Light Bronze	Dark Bronze	White	

EXPANSION JOINT SYSTEMS

ROOF SYSTEMS

Pages 64-68

Architectural Metals 64-65

Bellows 66-68

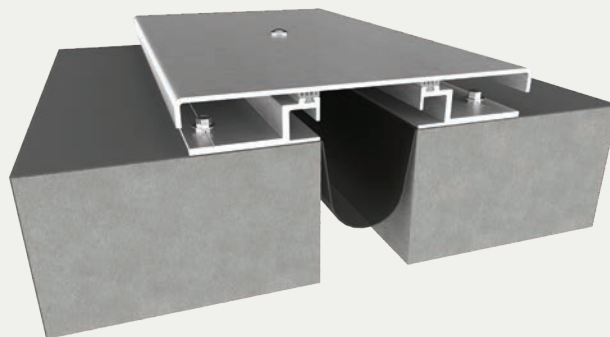
Seismic Aluminum Roof System

CURB APPLICATION (RJS/RJSw)

BENEFITS

SEISMIC MOVEMENT Designed with a seismic self-centering bar to keep the joint opening covered during a movement cycle providing a safe and clean appearance.

WEATHER RESISTANT Engineered with an integrated moisture barrier for water diversion with easy installation.



DETAILS

MATERIAL Aluminum 6061

FINISH Mill

MOVEMENT

Thermal: Horizontal and Vertical

Seismic: Lateral Shear

MOUNTING Surface

JOINT SIZE 2 Inches to 12 Inches

LENGTH 10 Linear Feet

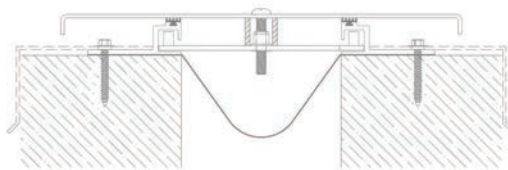
APPLICATION Exterior

INSTALLATION Roof

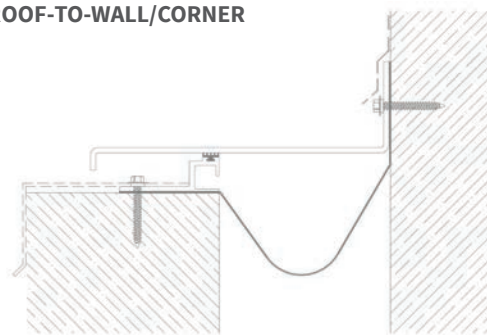
OPTIONS Fire barrier, Additional Materials, Sizes and Finishes available upon request

INSTALLATION

ROOF-TO-ROOF



ROOF-TO-WALL/CORNER



For more information, download our Installation and Operating Manuals (IOM) and Shop Drawings on nystrom.com

ORDER GUIDE

MODEL	APPLICATION	JOINT SIZE AT MEAN T°F	EXPOSED SIGHT LINE	TOTAL MOVEMENT
EJN-RJS-200	Roof to Roof	2" (51mm)	7" (178mm)	2" (51mm)
EJN-RJS-400	Roof to Roof	4" (102mm)	10" (255mm)	4" (102mm)
EJN-RJS-600	Roof to Roof	6" (152mm)	12" (305mm)	6" (152mm)
EJN-RJS-800	Roof to Roof	8" (203mm)	14" (356mm)	8" (203mm)
EJN-RJS-1000	Roof to Roof	10" (254mm)	17" (432mm)	10" (254mm)
EJN-RJS-1200	Roof to Roof	12" (305mm)	20" (508mm)	12" (305mm)
EJN-RJS-200W	Roof to Wall Corner	2" (51mm)	4.5" (114mm)	1" (25mm)
EJN-RJS-400W	Roof to Wall Corner	4" (102mm)	7" (178mm)	2" (51mm)
EJN-RJS-600W	Roof to Wall Corner	6" (152mm)	9" (228mm)	3" (76mm)
EJN-RJS-800W	Roof to Wall Corner	8" (203mm)	11" (280mm)	4" (102mm)
EJN-RJS-1000W	Roof to Wall Corner	10" (254mm)	13.5" (343mm)	5" (127mm)
EJN-RJS-1200W	Roof to Wall Corner	12" (305mm)	16" (406mm)	6" (152mm)

Additional options available, email info@nystrom.com for more information.

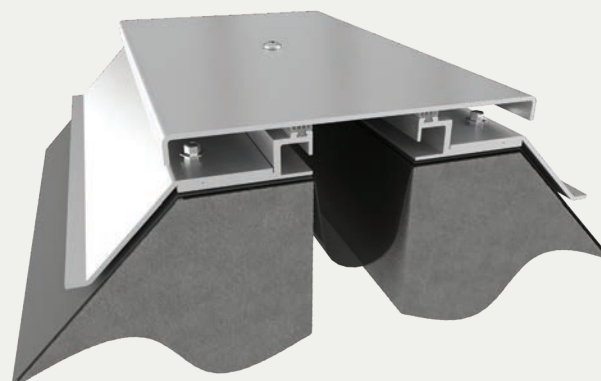
Seismic Aluminum Roof System

CANT APPLICATION (RJF/RJFw)

BENEFITS

INTEGRATED FLASHING System includes flashing for time-saving installation over typical cant conditions.

SEISMIC MOVEMENT Designed with a self-centering bar to keep the system centered during multi-directional movement.



DETAILS

MATERIAL Aluminum 6061

FINISH Mill

MOVEMENT

Thermal: Horizontal and Vertical

Seismic: Lateral Shear

MOUNTING Surface

JOINT SIZE 2 Inches to 12 Inches

LENGTH 10 Linear Feet

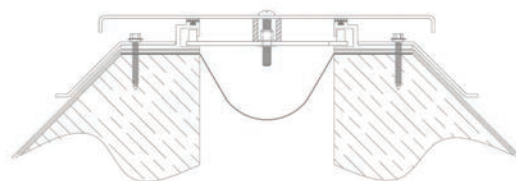
APPLICATION Exterior

INSTALLATION Roof

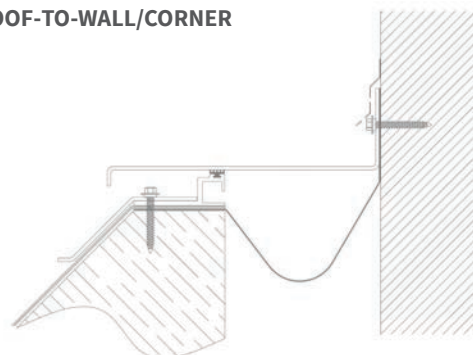
OPTIONS Fire barrier, Additional Materials, Sizes and Finishes available upon request

INSTALLATION

ROOF-TO-ROOF



ROOF-TO-WALL/CORNER



For more information, download our Installation and Operating Manuals (IOM) and Shop Drawings on nystrom.com

ORDER GUIDE

MODEL	APPLICATION	JOINT SIZE AT MEAN T°F	EXPOSED SIGHT LINE	TOTAL MOVEMENT
EJN-RJF-200	Roof to Roof	2" (51mm)	7"+ (178mm)	2" (51mm)
EJN-RJF-400	Roof to Roof	4" (102mm)	10"+ (255mm)	4" (102mm)
EJN-RJF-600	Roof to Roof	6" (152mm)	12"+ (305mm)	6" (152mm)
EJN-RJF-800	Roof to Roof	8" (203mm)	14"+ (356mm)	8" (203mm)
EJN-RJF-1000	Roof to Roof	10" (254mm)	17"+ (432mm)	10" (254mm)
EJN-RJF-1200	Roof to Roof	12" (305mm)	20"+ (508mm)	12" (305mm)
EJN-RJF-200W	Roof to Wall Corner	2" (51mm)	4.5"+ (114mm)	1" (25mm)
EJN-RJF-400W	Roof to Wall Corner	4" (102mm)	7"+ (178mm)	2" (51mm)
EJN-RJF-600W	Roof to Wall Corner	6" (152mm)	9"+ (228mm)	3" (76mm)
EJN-RJF-800W	Roof to Wall Corner	8" (203mm)	11"+ (280mm)	4" (102mm)
EJN-RJF-1000W	Roof to Wall Corner	10" (254mm)	13.5"+ (343mm)	5" (127mm)
EJN-RJF-1200W	Roof to Wall Corner	12" (305mm)	16"+ (406mm)	6" (152mm)

Additional options available, email info@nystrom.com for more information.

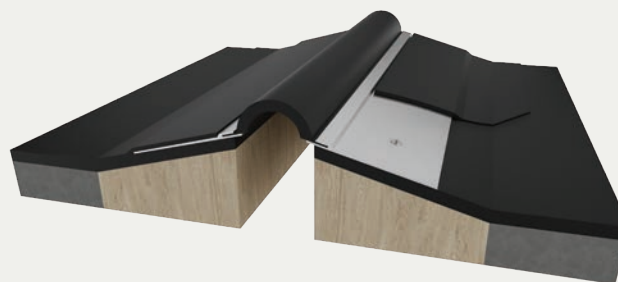
Roof Bellow System

CANT APPLICATION (EEJ/EEJw)

BENEFITS

EASY TRANSITIONS Water and weathertight factory manufactured transitions available.

FLANGE STYLE Galvanized steel flange also available in copper, stainless steel and aluminum.



DETAILS

MATERIAL 60-mil EPDM Bellows with Metal Flanges

MOVEMENT

Thermal: Horizontal and Vertical

Seismic: Lateral Shear

MOUNTING Surface

JOINT SIZE 1 to 8 Inches

LENGTH

10 Linear Feet Increments Available (Open Carton Fees may apply)

50 Linear Feet (8 inch bellow or less only)

100 Linear Feet (8 inch bellow or less only – available upon request)

APPLICATION Exterior

INSTALLATION Roof

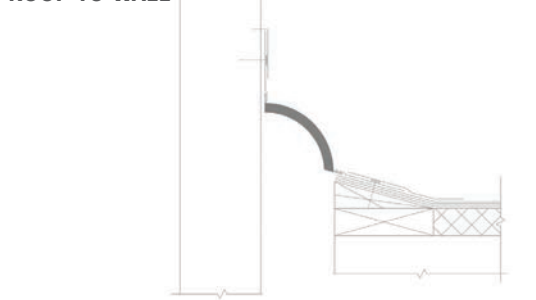
OPTIONS Additional Materials, Sizes available upon request

INSTALLATION

ROOF-TO-ROOF



ROOF-TO-WALL



For more information, download our Installation and Operating Manuals (IOM) and Shop Drawings on nystrom.com

ORDER GUIDE

MODEL	APPLICATION	JOINT SIZE AT MEAN T°F	TOTAL MOVEMENT
EJN-EEJ-100	Roof to Roof	1" (25mm)	1" (25mm)
EJN-EEJ-200	Roof to Roof	2" (51mm)	2" (51mm)
EJN-EEJ-300	Roof to Roof	3" (76mm)	3" (76mm)
EJN-EEJ-400	Roof to Roof	4" (102mm)	4" (102mm)
EJN-EEJ-500	Roof to Roof	5" (127mm)	5" (127mm)
EJN-EEJ-600	Roof to Roof	6" (152mm)	6" (152mm)
EJN-EEJ-700	Roof to Roof	7" (178mm)	7" (178mm)
EJN-EEJ-800	Roof to Roof	8" (203mm)	8" (203mm)
EJN-EEJ-100W	Roof to Wall	1" (25mm)	1" (25mm)
EJN-EEJ-200W	Roof to Wall	2" (51mm)	2" (51mm)
EJN-EEJ-300W	Roof to Wall	3" (76mm)	3" (76mm)
EJN-EEJ-400W	Roof to Wall	4" (102mm)	4" (102mm)
EJN-EEJ-500W	Roof to Wall	5" (127mm)	5" (127mm)
EJN-EEJ-600W	Roof to Wall	6" (152mm)	6" (152mm)
EJN-EEJ-700W	Roof to Wall	7" (178mm)	7" (178mm)
EJN-EEJ-800W	Roof to Wall	8" (203mm)	8" (203mm)

Additional options available, email info@nystrom.com for more information.

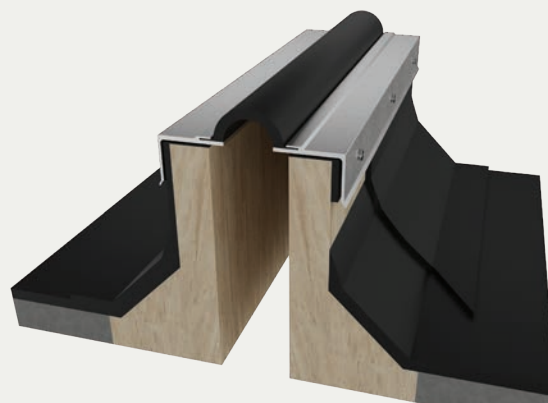
Roof Bellow System

CURB APPLICATION (ECF/ECFw)

BENEFITS

EASY TRANSITIONS Water and weathertight factory manufactured transitions available.

FLANGE STYLE Galvanized steel flange also available in copper, stainless steel and aluminum.



DETAILS

MATERIAL 60-mil EPDM Bellows with Metal Flanges

MOVEMENT

Thermal: Horizontal and Vertical

Seismic: Lateral Shear

MOUNTING Surface

JOINT SIZE 1 Inch to 8 Inches

LENGTH 10 Linear Feet (Open Carton Fees may apply)

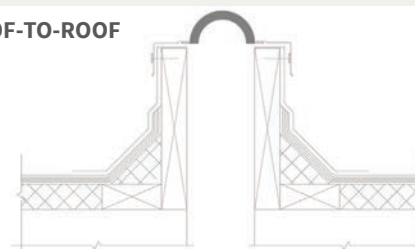
APPLICATION Exterior

INSTALLATION Roof

OPTIONS Additional Materials, Sizes available upon request

INSTALLATION

ROOF-TO-ROOF



ROOF-TO-WALL



For more information, download our Installation and Operating Manuals (IOM) and Shop Drawings on nystrom.com

ORDER GUIDE

MODEL	APPLICATION	JOINT SIZE AT MEAN T°F	TOTAL MOVEMENT
EJN-ECF-100	Roof to Roof	1" (25mm)	1" (25mm)
EJN-ECF-200	Roof to Roof	2" (51mm)	2" (51mm)
EJN-ECF-300	Roof to Roof	3" (76mm)	3" (76mm)
EJN-ECF-400	Roof to Roof	4" (102mm)	4" (102mm)
EJN-ECF-500	Roof to Roof	5" (127mm)	5" (127mm)
EJN-ECF-600	Roof to Roof	6" (152mm)	6" (152mm)
EJN-ECF-700	Roof to Roof	7" (178mm)	7" (178mm)
EJN-ECF-800	Roof to Roof	8" (203mm)	8" (203mm)
EJN-ECF-100W	Roof to Wall	1" (25mm)	1" (25mm)
EJN-ECF-200W	Roof to Wall	2" (51mm)	2" (51mm)
EJN-ECF-300W	Roof to Wall	3" (76mm)	3" (76mm)
EJN-ECF-400W	Roof to Wall	4" (102mm)	4" (102mm)
EJN-ECF-500W	Roof to Wall	5" (127mm)	5" (127mm)
EJN-ECF-600W	Roof to Wall	6" (152mm)	6" (152mm)
EJN-ECF-700W	Roof to Wall	7" (178mm)	7" (178mm)
EJN-ECF-800W	Roof to Wall	8" (203mm)	8" (203mm)

Additional options available, email info@nystrom.com for more information.

Roof Bellow System

COVER MEMBRANE APPLICATION (EWCF/EWCFw)

BENEFITS

CUSTOM APPLICATION Designed for roof systems when wider curb widths are required.

EASY TRANSITION Water and weathertight factory manufactured transitions available.



DETAILS

MATERIAL 60-mil EPDM Membrane

MOVEMENT

Thermal: Horizontal and Vertical
Seismic: Lateral Shear

MOUNTING Surface

JOINT SIZE 1 to 8 Inches

LENGTH 50 or 100 Linear Foot Roll

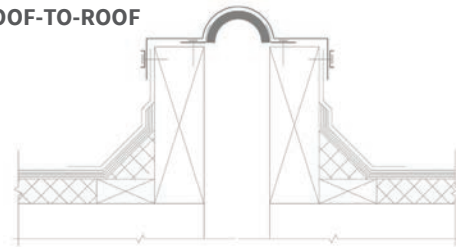
APPLICATION Exterior

INSTALLATION Roof

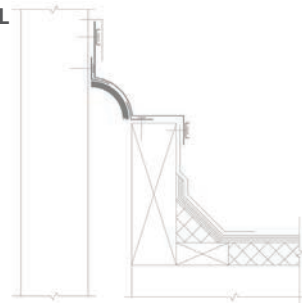
OPTIONS Additional Materials, Sizes available upon request

INSTALLATION

ROOF-TO-ROOF



ROOF-TO-WALL



For more information, download our Installation and Operating Manuals (IOM) and Shop Drawings on nystrom.com

ORDER GUIDE

MODEL	APPLICATION	JOINT SIZE AT MEAN T°F	TOTAL MOVEMENT
EJN-EWCF-100	Roof to Roof	1" (25mm)	1" (25mm)
EJN-EWCF-200	Roof to Roof	2" (51mm)	2" (51mm)
EJN-EWCF-300	Roof to Roof	3" (76mm)	3" (76mm)
EJN-EWCF-400	Roof to Roof	4" (102mm)	4" (102mm)
EJN-EWCF-500	Roof to Roof	5" (127mm)	5" (127mm)
EJN-EWCF-600	Roof to Roof	6" (152mm)	6" (152mm)
EJN-EWCF-700	Roof to Roof	7" (178mm)	7" (178mm)
EJN-EWCF-800	Roof to Roof	8" (203mm)	8" (203mm)
EJN-EWCF-100W	Roof to Wall	1" (25mm)	1" (25mm)
EJN-EWCF-200W	Roof to Wall	2" (51mm)	2" (51mm)
EJN-EWCF-300W	Roof to Wall	3" (76mm)	3" (76mm)
EJN-EWCF-400W	Roof to Wall	4" (102mm)	4" (102mm)
EJN-EWCF-500W	Roof to Wall	5" (127mm)	5" (127mm)
EJN-EWCF-600W	Roof to Wall	6" (152mm)	6" (152mm)
EJN-EWCF-700W	Roof to Wall	7" (178mm)	7" (178mm)
EJN-EWCF-800W	Roof to Wall	8" (203mm)	8" (203mm)

Additional options available, email info@nystrom.com for more information.

EXPANSION JOINT SYSTEMS

FIRE BARRIER

Page 70-71

Seismic Application 70-71

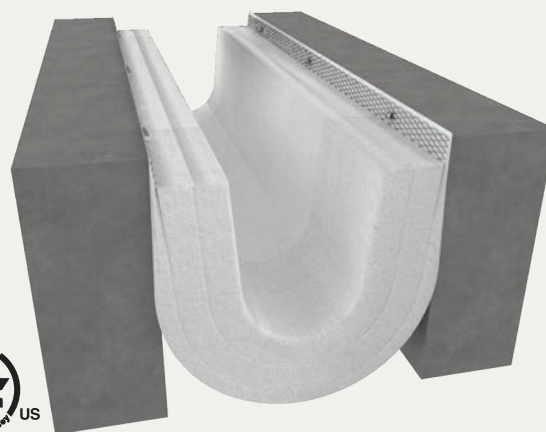
Seismic Fire Barrier Floor System

INSIDE, TOP OR BOTTOM APPLICATION (FLF/FLFw)

BENEFITS

FIRE-RATED Constructed of fire retardant materials to contain fires from spreading through joint openings. Available in 1-, 2- or 3-hour ratings.

EASY INSTALLATION The system installs with tongue and groove process with limited or no caulking requirements.



DETAILS

MOVEMENT

Thermal: Horizontal and Vertical

Seismic: +/- 50% Lateral Shear

MOUNTING

Inside: All sizes

Top: 4 inches and greater

Bottom: 6 inches and greater

JOINT SIZE 2 Inches to 24 Inches

LENGTH

FLF: TM/IM 10 Linear Feet, up to 12"; 4 Linear Feet, 14" and up
BM 4 Linear Feet

FIRE-RATING 1-, 2- or 3-Hour (3 hour available for 6" and larger joint sizes)

APPLICATION Interior

INSTALLATION Floor

COMPLIANCE Tested in accordance with:

UL 2079/ ULC S-115 "FTH" (FTH: Rating Fire, Temperature and Hose)

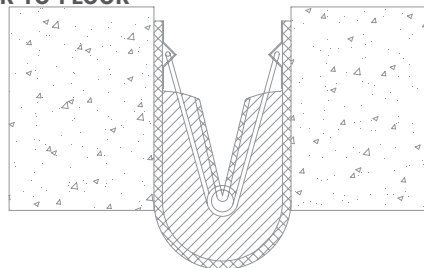
ASTM-E119, E1399, E1966

BS EN 1366.4

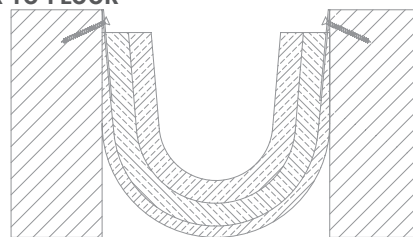
OPTIONS Additional Movement, Transitions and Weather Barrier options available upon request

INSTALLATION

FLOOR-TO-FLOOR



FLOOR-TO-FLOOR



For more information, download our Installation and Operating Manuals (IOM) and Shop Drawings on nystrom.com

ORDER GUIDE

MODEL	APPLICATION	JOINT SIZE AT MEAN T°F	TOTAL MOVEMENT
EJN-FLF140-200	Floor to Floor/Wall	2" (51mm)	2" (51mm)
EJN-FLF140-300	Floor to Floor/Wall	3" (76mm)	3" (76mm)
EJN-FLF140-400	Floor to Floor/Wall	4" (102mm)	4" (102mm)
EJN-FLF-400	Floor to Floor	4" (102mm)	4" (102mm)
EJN-FLF-600	Floor to Floor	6" (152mm)	6" (152mm)
EJN-FLF-800	Floor to Floor	8" (203mm)	8" (203mm)
EJN-FLF-1000	Floor to Floor	10" (254mm)	10" (254mm)
EJN-FLF-1200	Floor to Floor	12" (305mm)	12" (305mm)
EJN-FLF-1400	Floor to Floor	14" (356mm)	14" (356mm)
EJN-FLF-1600	Floor to Floor	16" (406mm)	16" (406mm)
EJN-FLF-1800	Floor to Floor	18" (457mm)	18" (457mm)
EJN-FLF-2000	Floor to Floor	20" (508mm)	20" (508mm)
EJN-FLF-2200	Floor to Floor	22" (558mm)	22" (558mm)
EJN-FLF-2400	Floor to Floor	24" (609mm)	24" (609mm)

MODEL	APPLICATION	JOINT SIZE AT MEAN T°F	TOTAL MOVEMENT
EJN-FLF-400W	Floor to Wall	4" (102mm)	4" (102mm)
EJN-FLF-600W	Floor to Wall	6" (152mm)	6" (152mm)
EJN-FLF-800W	Floor to Wall	8" (203mm)	8" (203mm)
EJN-FLF-1000W	Floor to Wall	10" (254mm)	10" (254mm)
EJN-FLF-1200W	Floor to Wall	12" (305mm)	12" (305mm)
EJN-FLF-1400W	Floor to Wall	14" (356mm)	14" (356mm)
EJN-FLF-1600W	Floor to Wall	16" (406mm)	16" (406mm)
EJN-FLF-1800W	Floor to Wall	18" (457mm)	18" (457mm)
EJN-FLF-2000W	Floor to Wall	20" (508mm)	20" (508mm)
EJN-FLF-2200W	Floor to Wall	22" (558mm)	22" (558mm)
EJN-FLF-2400W	Floor to Wall	24" (609mm)	24" (609mm)

Additional options available, email info@nystrom.com for more information.

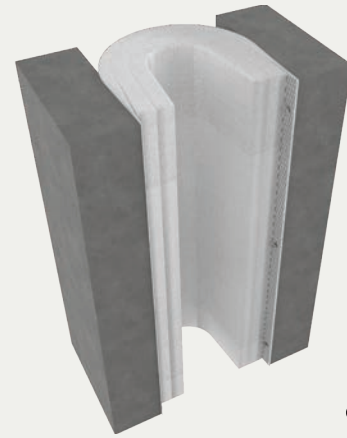
Seismic Fire Barrier Wall System

INSIDE AND TOP APPLICATION (FLW/FLWw)

BENEFITS

FIRE-RATED Constructed of fire retardant materials to contain fires from spreading through joint openings. Available in 1, 2 or 3 hour ratings.

EASY INSTALLATION The system installs with tongue and groove process with limited or no caulking requirements.



DETAILS

MOVEMENT

Thermal: Horizontal and Vertical
Seismic: +/-50% Lateral Shear

MOUNTING

Inside: All sizes
Top: 4 inches and greater

JOINT SIZE 2 Inches to 24 Inches

LENGTH

FLW140: 6.5 Linear Feet
FLW: 10 Linear Feet up to 12", 4 Linear Feet, 14" and up

FIRE-RATING 1-, 2- or 3-Hour (3HR is available for 6" and larger joint sizes)

APPLICATION Interior

INSTALLATION Wall

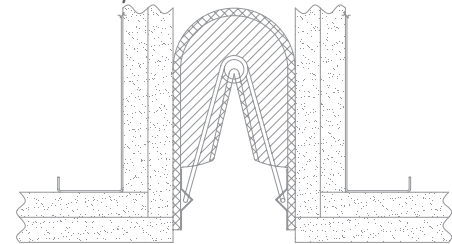
COMPLIANCE Tested in accordance with:

UL 2079 and CAN ULC S-115 "FTH" (FTH: Rating Fire, Temperature and Hose)
ASTM E119, E1399, E1966
BS EN 1366.4

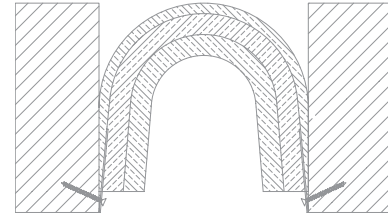
OPTIONS Additional Movement, Transitions and Weatherproof Options Available Upon Request.

INSTALLATION

WALL-TO-WALL/CORNER



WALL-TO-WALL



For more information, download our Installation and Operating Manuals (IOM) and Shop Drawings on nystrom.com

ORDER GUIDE

MODEL	APPLICATION	JOINT SIZE AT MEAN T°F	TOTAL MOVEMENT	MODEL	APPLICATION	JOINT SIZE AT MEAN T°F	TOTAL MOVEMENT
EJN-FLW140-200	Wall to Wall/Corner	2" (51mm)	2" (51mm)	EJN-FLW-400W	Wall to Corner	4" (102mm)	4" (102mm)
EJN-FLW140-300	Wall to Wall/Corner	3" (76mm)	3" (76mm)	EJN-FLW-600W	Wall to Corner	6" (152mm)	6" (152mm)
EJN-FLW140-400	Wall to Wall/Corner	4" (102mm)	4" (102mm)	EJN-FLW-800W	Wall to Corner	8" (203mm)	8" (203mm)
EJN-FLW-400	Wall to Wall	4" (102mm)	4" (102mm)	EJN-FLW-1000W	Wall to Corner	10" (254mm)	10" (254mm)
EJN-FLW-600	Wall to Wall	6" (152mm)	6" (152mm)	EJN-FLW-1200W	Wall to Corner	12" (305mm)	12" (305mm)
EJN-FLW-800	Wall to Wall	8" (203mm)	8" (203mm)	EJN-FLW-1400W	Wall to Corner	14" (356mm)	14" (356mm)
EJN-FLW-1000	Wall to Wall	10" (254mm)	10" (254mm)	EJN-FLW-1600W	Wall to Corner	16" (406mm)	16" (406mm)
EJN-FLW-1200	Wall to Wall	12" (305mm)	12" (305mm)	EJN-FLW-1800W	Wall to Corner	18" (457mm)	18" (457mm)
EJN-FLW-1400	Wall to Wall	14" (356mm)	14" (356mm)	EJN-FLW-2000W	Wall to Corner	20" (508mm)	20" (508mm)
EJN-FLW-1600	Wall to Wall	16" (406mm)	16" (406mm)	EJN-FLW-2200W	Wall to Corner	22" (558mm)	22" (558mm)
EJN-FLW-1800	Wall to Wall	18" (457mm)	18" (457mm)	EJN-FLW-2400W	Wall to Corner	24" (609mm)	24" (609mm)
EJN-FLW-2000	Wall to Wall	20" (508mm)	20" (508mm)				
EJN-FLW-2200	Wall to Wall	22" (558mm)	22" (558mm)				
EJN-FLW-2400	Wall to Wall	24" (609mm)	24" (609mm)				

Additional options available, email info@nystrom.com for more information.



Direct Service Done Right

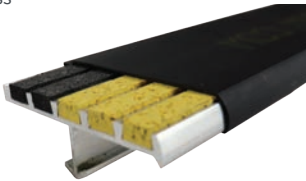
Line Card Divisions 5, 7, 8, 10 + 12

We're dedicated to giving our customers customized service, solutions, and products in the manner that works for them. Hassle-free.

STAIR TREADS + NOSINGS

05 5000

- Luminous Egress
- Ribbed
- Full Bar
- Inset
- Two-Part
- Renovation
- Cast
- EcoTread™
- Stair Nosing Guards™



FALL PROTECTION

05 5213 / 07 7200

- Weighted Base Guardrail
- Perimeter Guardrail
- Corral Guardrail



ROOF HATCHES

07 7200

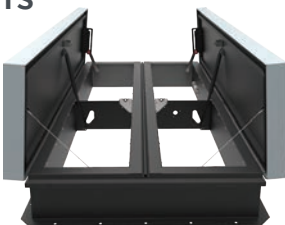
- Standard
- Thermally Broken
- Daylighting
- Security
- Equipment
- Fall Protection



SMOKE VENTS

07 7200

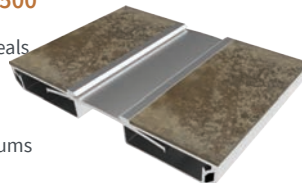
- Standard
- Daylighting
- Acoustical
- Thermally Broken
- Fall Protection



PREFORMED JOINT SEALS + EXPANSION JOINT SYSTEMS

07 9100 + 07 9500

- Compression Seals
- Floor
- Wall + Ceiling
- Roof
- Parking + Stadiums
- Fire Barrier



ACCESS DOORS

08 3100

- Non-Rated
- Fire Rated
- Security
- Specialty
- Exterior
- HVAC



FLOOR DOORS

08 3483

- Fire-Rated
- Drainable
- Non-Drainable
- Retrofit
- Well Hatches
- Safety Accessories



ENTRANCE MATS + FRAMES ENTRANCE FLOOR GRILLES

12 4813 + 12 4816

- Architectural + Rigid Grilles
- Roll-Up Grilles
- Roll-Up Mats
- Vinyl Mats



FIRE PROTECTION CABINET + FIRE EXTINGUISHERS

10 4413 + 10 4416

- Fire Cabinets
- Portable Fire Extinguishers
- Detention Cabinets
- Fire Blanket Cabinets
- Accessories



LUMINOUS EGRESS PRODUCTS

10 1443

- Handrail Markings
- Demarcation Markings
- Obstacle Markings
- Signage



9300 73rd Avenue North
Minneapolis, MN 55428

Phone (800) 547-2635
Fax (866) 900-1959

info@nystrom.com



nystrom.com

Visit nystrom.com for the latest version of this document and more information.