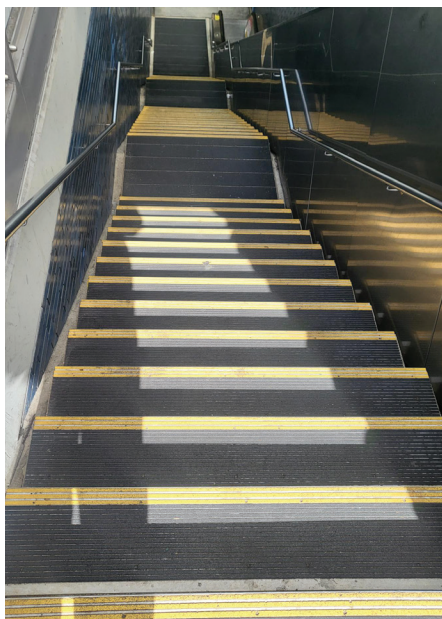


Enhancing Safety and Durability at 19th Street Oakland Station

REVITALIZING INFRASTRUCTURE FOR A SAFER AND SUSTAINABLE COMMUTER EXPERIENCE

The 19th Street Oakland Station faced a pressing need for the replacement of worn-out stair treads and landings. The challenge was not only to replace these components but also to create custom landings that could withstand the rigors of heavy foot traffic and harsh treatment. The station required a solution that prioritized safety, durability, and ease of maintenance.

In response to this challenge, the project team embarked on a mission to transform the station into a safer and more resilient transportation hub. The innovative approach involved the use of STRB-A11D-ECO-V3C5 stair treads and custom landings created



from STRB-A11Ds. These components were customized by removing the front nose and the back bevel of renovation treads used on the steps, combining them to construct flat landings with EcoTread™.

Nystrom introduced the concept of nosings with EcoTread to BART (Bay Area Rapid Transit) and successfully convinced them of its superiority. BART recognized that EcoTread offered a solution that could withstand the station's heavy foot traffic and the demanding treatment it experiences. The key advantages that led to the selection of this product include:

- Exceptional Durability: EcoTread was chosen for its ability to withstand heavy foot traffic and harsh

LOCATION

19th Street Oakland Station (BART)

PRODUCT

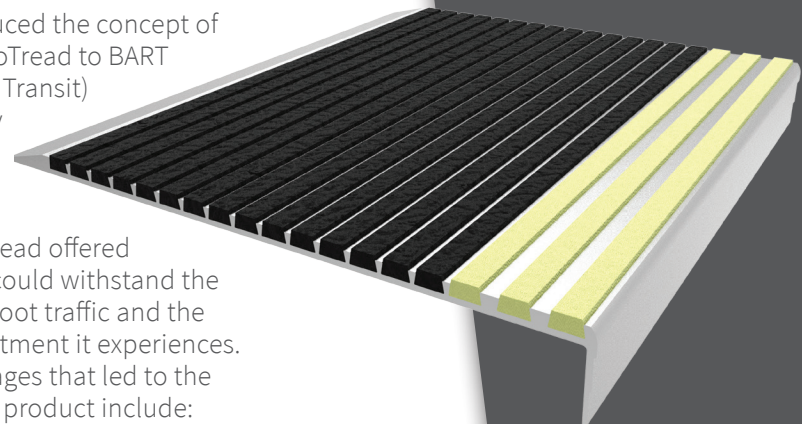
- STRB-A11D-ECO-V3C5 (3,844 ft)
- Custom Landings made from STRB-A11Ds

ARCHITECT

- Parsons Brinckerhoff Quade & Douglas, Inc. of New York
- Tudor Engineering Company of San Francisco
- Bechtel Corporation of San Francisco

CONTRACTOR

ProVen Management
Oakland, CA





a significant factor, ensuring the product's longevity in outdoor conditions.

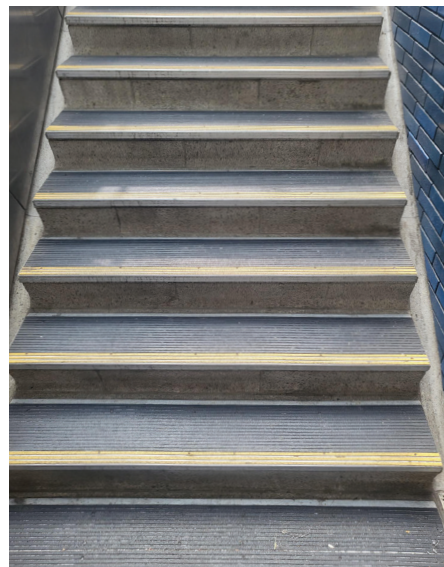
- **Ease of Cleaning and Maintenance:** The low maintenance requirements of EcoTread were considered an asset reducing ongoing operational costs.

Katrina Galloway, Project Engineer, expressed her satisfaction with the choice of EcoTread, stating, "We use EcoTread for durability and easy maintenance in a high-traffic area...I'd recommend

it for any stair nosing need."

- **Slip Resistance:** The product's slip resistance was seen as crucial in enhancing pedestrian safety, reducing the risk of accidents, and ensuring a secure environment for commuters.
- **Weather Resistance:** The EcoTread resilience to weather variations was

The collaboration between architects, engineers, contractors, and the selection of EcoTread demonstrates a commitment to creating a safer, more durable, and sustainable transportation hub at 19th Street Oakland Station, ultimately benefiting the commuters and the community.



9300 73rd Avenue North
Minneapolis, MN 55428

Phone (800) 547-2635

Fax (800) 317-8770