

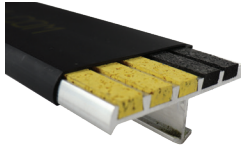
The go-to, direct-to-contractor manufacturer creating safer, more accessible buildings since 1948. Nystrom offers Hassle-Free services including access to technical experts, REVIT tools for BIM, HPDs for LEED v4, 3-part specifications and AIA-accredited continuing education courses.

nystrom.com

DIV 5

STAIR TREADS + NOSINGS 05 5000

- Safe-T-Lume™
- Ribbed
- Full Bar
- Inset
- Two-Part
- Renovation
- Cast
- EcoTread™
- Stair Nosing Guards™



FALL PROTECTION 05 5213 / 07 7200

- Weighted Base Guardrail
- Perimeter Guardrail
- Corral Guardrail



DIV 7

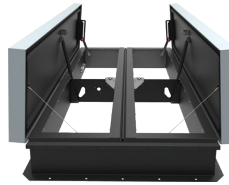
ROOF HATCHES 07 7200

- Personnel™
- ThermalMAX™
- SunLit™
- Security
- Equipment
- Fall Protection



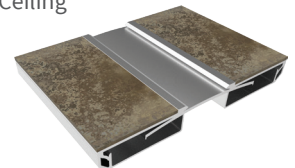
SMOKE VENTS 07 7200

- SmokEscape™
- SunLit™
- AcousticMAX™
- Fall Protection



PREFORMED JOINT SEALS + EXPANSION JOINT SYSTEMS 07 9100 + 07 9513

- Interior Floor, Wall/Ceiling
- Exterior Wall, Roof
- Parking Deck
- Fire Barrier
- Compression Seals



DIV 8

ACCESS DOORS 08 3100

- Non-Rated
- Fire Rated
- Security
- Specialty
- Exterior



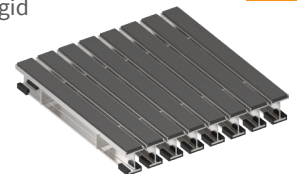
FLOOR DOORS 08 3483

- Fire-Rated
- Drainable
- Non-Drainable
- Retrofit
- Well Hatches
- Safety Accessories



ENTRANCE MATS + FRAMES ENTRANCE FLOOR GRILLES 12 4813 + 12 4816

- Architectural + Rigid Grilles
- Roll-Up Grilles
- Roll-Up Mats
- Vinyl Mats

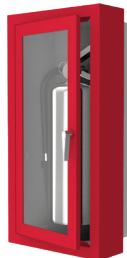


DIV 12

DIV 10

FIRE PROTECTION CABINET + FIRE EXTINGUISHERS 10 4413 + 10 4416

- Fire Cabinets
- Portable Fire Extinguishers
- Detention Cabinets
- Fire Blanket Cabinets
- Accessories



LUMINOUS EGRESS PRODUCTS 10 1443

- Handrail Markings
- Demarcation Markings
- Obstacle Markings
- Signage



Find Nystrom specifications and Revit/BIM files at these preferred partners:



Products standardized or customized for your precise needs.
Contact Us Today!

TERRITORY PARTNER



Christy Associates
p 407.869.1800
f 407.895.0046
info@christyreprs.com
2412 Lynx Lane
Orlando, FL 32804
www.ChristyReps.com
FL, PR

George Pateas
Central/North/Northwest Territories
gpateas@christyreprs.com
p 407.467.4910

Chris Reall
Central Territory
creall@christyreprs.com
p 407.493.6707

Josh Babb
East/South Territories
jbabb@christyreprs.com
p 561.248.2155

Drew Christy
East/South Territories
dchristy@christyreprs.com
p 321.945.1445

Brandon Boyers
North/Northwest Territories
bboyers@christyreprs.com
p 321.474.1575

Richard Saxton
Southwest / West Territories
rsaxton@christyreprs.com
p 863.559.6691

Alec Christy
Southwest Territory
alec@christyreprs.com
p 407.375.5107

Nystrom Area Sales Manager
Evan Howell
ehowell@nystrom.com
p 763.488.9244
f 763.488.9201