

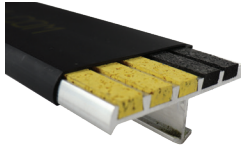
The go-to, direct-to-contractor manufacturer creating safer, more accessible buildings since 1948. Nystrom offers Hassle-Free services including access to technical experts, REVIT tools for BIM, HPDs for LEED v4, 3-part specifications and AIA-accredited continuing education courses.

[nystrom.com](http://nystrom.com)

DIV 5

## STAIR TREADS + NOSINGS 05 5000

- Safe-T-Lume™
- Ribbed
- Full Bar
- Inset
- Two-Part
- Renovation
- Cast
- EcoTread™
- Stair Nosing Guards™



## FALL PROTECTION 05 5213 / 07 7200

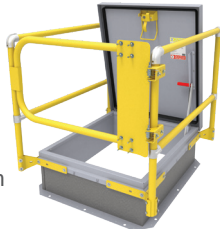
- Weighted Base Guardrail
- Perimeter Guardrail
- Corral Guardrail



DIV 7

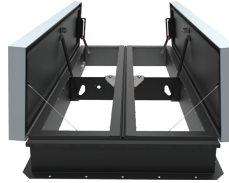
## ROOF HATCHES 07 7200

- Personnel™
- ThermalMAX™
- SunLit™
- Security
- Equipment
- Fall Protection



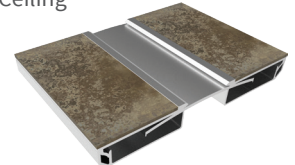
## SMOKE VENTS 07 7200

- SmokEscape™
- SunLit™
- AcousticMAX™
- Fall Protection



## PREFORMED JOINT SEALS + EXPANSION JOINT SYSTEMS 07 9100 + 07 9513

- Interior Floor, Wall/Ceiling
- Exterior Wall, Roof
- Parking Deck
- Fire Barrier
- Compression Seals



DIV 8

## ACCESS DOORS 08 3100

- Non-Rated
- Fire Rated
- Security
- Specialty
- Exterior



## FLOOR DOORS 08 3483

- Fire-Rated
- Drainable
- Non-Drainable
- Retrofit
- Well Hatches
- Safety Accessories



## ENTRANCE MATS + FRAMES ENTRANCE FLOOR GRILLES 12 4813 + 12 4816

- Architectural + Rigid Grilles
- Roll-Up Grilles
- Roll-Up Mats
- Vinyl Mats

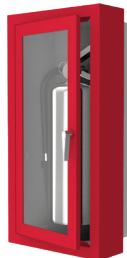


DIV 12

DIV 10

## FIRE PROTECTION CABINET + FIRE EXTINGUISHERS 10 4413 + 10 4416

- Fire Cabinets
- Portable Fire Extinguishers
- Detention Cabinets
- Fire Blanket Cabinets
- Accessories



## LUMINOUS EGRESS PRODUCTS 10 1443

- Handrail Markings
- Demarcation Markings
- Obstacle Markings
- Signage



Find Nystrom specifications and Revit/BIM files at these preferred partners:



Products standardized or customized for your precise needs.  
**Contact Us Today!**



Life Safety Hardware Consultants  
151 Eisenhower Ln North | Lombard, IL 60148 | [www.lshc.org](http://www.lshc.org)  
Ray Amato | [ray@lshc.org](mailto:ray@lshc.org) | m 630.251.2427 | p 815.790.2056  
Justin Robinson | [justin@lshc.org](mailto:justin@lshc.org) | p 815.412.4908  
Michael Robinson | [michael@lshc.org](mailto:michael@lshc.org) | p 815.790.2056

WI, N. IL

Nystrom Area Sales Manager

Amy Meyer  
p 763.488.9211  
f 866.900.1959  
[ameyer@nystrom.com](mailto:ameyer@nystrom.com)