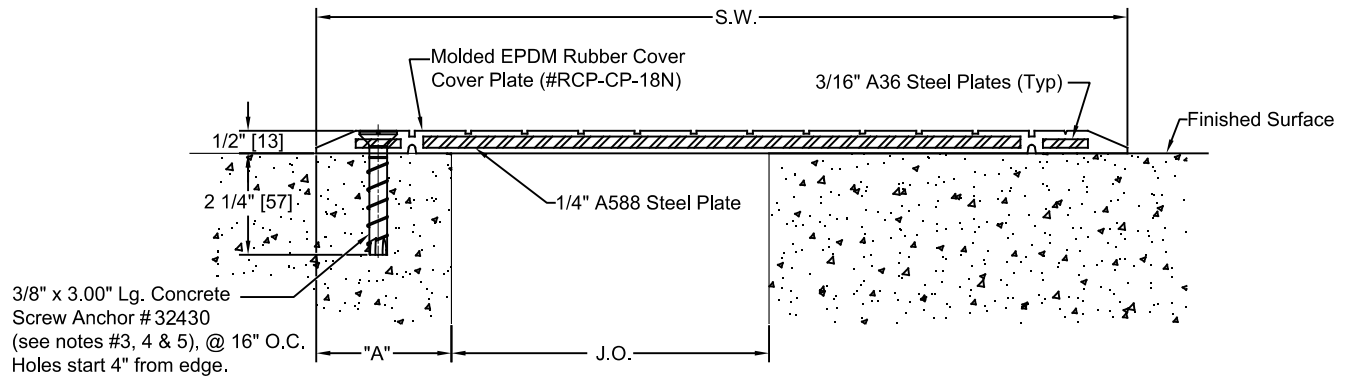


Notes:

- 1.) Please refer to the installation manual for information on splices, terminations, transitions, and additional details concerning adjacent construction.
- 2.) Maximum values shown on dimension chart are the limits for proper system performance.
- 3.) The system and all mechanical components are supplied to accommodate 6.0 foot section lengths. If required, please consult with a Nystrom representative for the types and quantities of any components needed for proper installation.
- 4.) Anchor embedment length shown in details applicable for installing system directly into structural concrete. Contact a Nystrom representative when anchoring system into conditions where topping slabs or other non-structural support conditions occur at system interface for suggested adjustment to embedment length.
- 5.) Edge distance shown in details in conformance to fastener recommendations. Contact a Nystrom representative for project specific conditions where potential interference may occur with concrete reinforcing steel, post tensioning details, or other conditions where adjustment to edge distance is desired.
- 6.) The EJ-RCP-1000N is too light to take a $\pm 1/2$ " (13mm) substrate offset. A EJ-RCP-1200N or larger is required - please consult with a Nystrom representative for projects requiring a $\pm 1/2$ " (13mm) substrate offset.
- 7.) An alternate Stainless Steel anchor (#32431) is available for an upcharge.



MODEL "EJ-RCP-1000N"


Designed For Pedestrian Foot Traffic And Slow
Speed Non-Commercial Vehicular Traffic
(surface mounted condition)

Dimension Chart

Model	System Width (S.W.)	Panel Length	Joint Opening @ Midrange Temperature	Vehicular Joint Opening (J.O.) Max		Setback "A"
				(Service)	(Seismic)	
EJ-RCP-1000N	18"(457)	6ft (1829)	5"(127)	10"(254)	11" (279)	3"(76)

RUBBER COLOR SELECTOR

BLACK _____ GRAY _____

PROJECT:						
ARCHITECT:						
CONTRACTOR:						
QTY:						
PART#:				EJ-RCP-1000N		
 9300 73rd Ave N., Minneapolis, MN 55428 800-547-2635 info@nystrom.com				TITLE:		
				RUBBER COATED HEAVY DUTY SYSTEM SURFACE APPLICATION		
	NAME	DATE	SIZE	DWG. NO.		
DRAWN	JKP	12/03/24	A	EJ-RCP-1000N		REV A
RELEASED				WEIGHT:	SHEET 1 OF 2	

