

Notes:

1.) Please refer to the installation manual for information on splices, terminations, transitions, and additional details concerning adjacent construction.

2.) Maximum values shown on dimension chart are the limits for proper system performance.

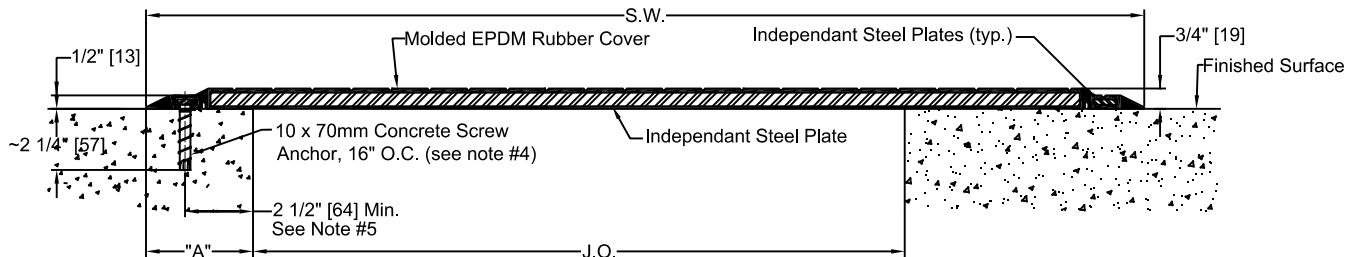
3.) The system and all mechanical components are supplied to accommodate 4.0 foot section lengths. If required, please consult with a Nystrom representative for the types and quantities of any components needed for proper installation.

4.) Anchor embedment length shown in details applicable for installing system directly into structural concrete. Contact a Nystrom representative when anchoring system into conditions where topping slabs or other non-structural support conditions occur at system interface for suggested adjustment to embedment length.

5.) Edge distance shown in details in conformance to fastener recommendations. Contact a Nystrom representative for project specific conditions where potential interference may occur with concrete reinforcing steel, post tensioning details, or other conditions where adjustment to edge distance is desired.

6.) A EJ-RCP-1200N or larger is required for projects requiring a 1/2" (13mm) substrate offset, max displacement = 1.0" (25mm) - please consult with a Nystrom representative.

7.) An alternate Stainless Steel anchor (#N5717) is available for an upcharge.



MODEL "EJ-RCP-3100"

Designed For Pedestrian Foot Traffic And Slow
Speed Non-Commercial Vehicular Traffic
(surface mounted condition)

Dimension Chart


| Model | System Width (S.W.) | Panel Length | Joint Opening @ Midrange Temperature | Vehicular Joint Opening (J.O.) Max | | Setback "A" |
|-------------|---------------------|--------------|--------------------------------------|------------------------------------|-------------|-------------|
| | | | | (Service)* | (Seismic)** | |
| EJ-RCP-3100 | 36-3/4"(933) | 4ft (1219) | 15-1/8"(384) | 30-1/4"(768) | 31" (787) | 4"(102) |

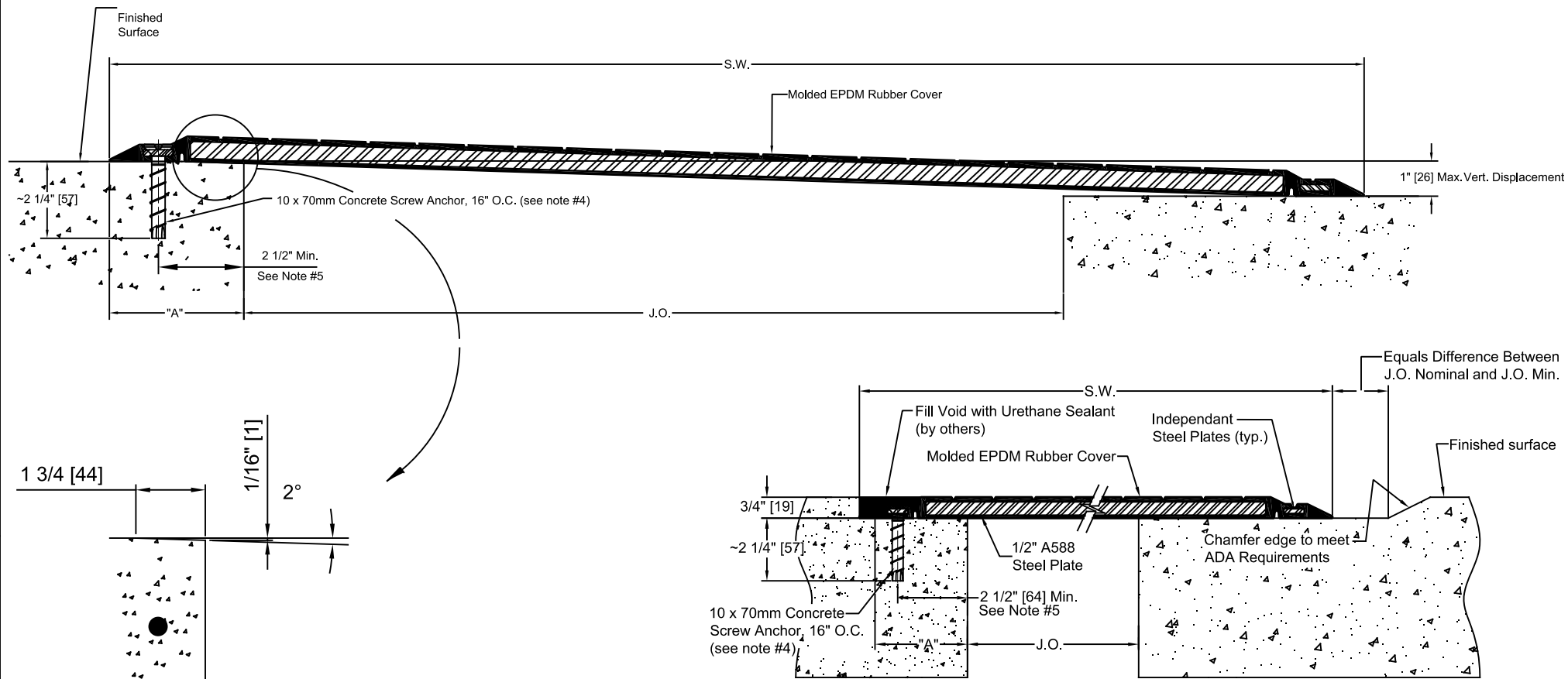
* Service movements occur due to the following design conditions, including but not limited to, thermal, wind sway, creep and shrinkage.

** Seismic movements occur under short term, high acceleration design conditions. (seismic events)

RUBBER COLOR SELECTOR

BLACK _____ GRAY _____

| | | | | | | |
|--|------|----------|------|---|--|--------------|
| PROJECT: | | | | | | |
| ARCHITECT: | | | | | | |
| CONTRACTOR: | | | | | | |
| QTY: | | | | | | |
| PART#: | | | | EJ-RCP-3100 | | |
|  9300 73rd Ave N., Minneapolis, MN 55428 800-547-2635 info@nystrom.com | | | | TITLE: RUBBER COATED HEAVY DUTY SYSTEM SURFACE APPLICATION | | |
| | NAME | DATE | SIZE | DWG. NO. | | REV |
| DRAWN | JPk | 11/08/24 | A | EJ-RCP-3100 | | A |
| RELEASED | | | | WEIGHT: | | SHEET 1 OF 2 |



Dimension Chart


| Model | System Width (S.W.) | Panel Length | Joint Opening @ Midrange Temperature | Vehicular Joint Opening (J.O.) Max | | Setback "A" |
|-------------|---------------------|--------------|--------------------------------------|------------------------------------|-------------|-------------|
| | | | | (Service)* | (Seismic)** | |
| EJ-RCP-3100 | 36-3/4"(933) | 4ft (1219) | 15-1/8"(384) | 30-1/4"(768) | 31" (787) | 4"(102) |

* Service movements occur due to the following design conditions, including but not limited to, thermal, wind sway, creep and shrinkage.

** Seismic movements occur under short term, high acceleration design conditions. (seismic events)

MODEL "EJ-RCP-3100"

Designed For Pedestrian Foot Traffic And Slow Speed Non-Commercial Vehicular Traffic (recessed condition)

| | | | | | | |
|--|------|----------|------|---|--|--------------|
| PROJECT: | | | | | | |
| ARCHITECT: | | | | | | |
| CONTRACTOR: | | | | | | |
| QTY: | | | | | | |
| PART#: | | | | EJ-RCP-3100 | | |
|  9300 73rd Ave N., Minneapolis, MN 55428 800-547-2635 info@nystrom.com | | | | TITLE: | | |
| | | | | RUBBER COATED HEAVY DUTY SYSTEM SURFACE APPLICATION | | |
| | NAME | DATE | SIZE | DWG. NO. | | REV |
| DRAWN | JPk | 11/08/24 | A | EJ-RCP-3100 | | A |
| RELEASED | | | | WEIGHT: | | SHEET 2 OF 2 |