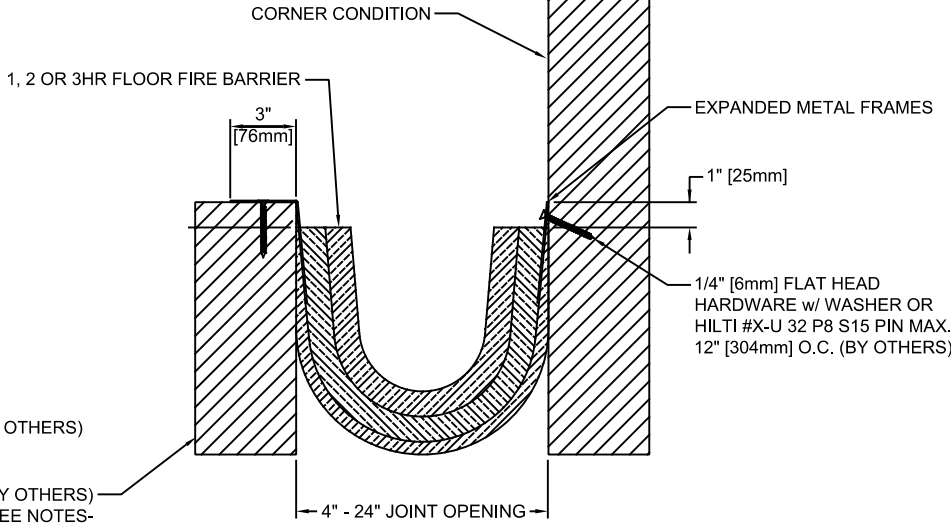


EJN-FLF-TM SERIES



EJN-FLF-TM/w SERIES

EXAMPLE P/N'S

- 2HR RATING { (4" JOINT OPENING : P/N = EJN-FLF-400-TM)
(10" JOINT OPENING : P/N = EJN-FLF-1000-TM)
(24" JOINT OPENING : P/N = EJN-FLF-2400-TM)
- 3HR RATING { (6" JOINT OPENING : P/N = EJN-FLF-600-TM-3HR)
(10" JOINT OPENING : P/N = EJN-FLF-1000-TM-3HR)
(24" JOINT OPENING : P/N = EJN-FLF-2400-TM-3HR)

EXAMPLE P/N'S

- 2HR RATING { (4" JOINT OPENING : P/N = EJN-FLF-400W-TM)
(10" JOINT OPENING : P/N = EJN-FLF-1000W-TM)
(24" JOINT OPENING : P/N = EJN-FLF-2400W-TM)
- 3HR RATING { (6" JOINT OPENING : P/N = EJN-FLF-600W-TM-3HR)
(10" JOINT OPENING : P/N = EJN-FLF-1000W-TM-3HR)
(24" JOINT OPENING : P/N = EJN-FLF-2400W-TM-3HR)


SEISMIC FIRE BARRIER FLOOR SYSTEM - TOP MOUNT APPLICATION

- MOVEMENT: +/- 50% (TOTAL = 100%)
- STOCK LENGTHS:
 - : 4" - 12" JOINT OPENINGS = 10 FT (3.0M) INCREMENTS,
 - : 14" - 24" JOINT OPENINGS = 4 FT (1.2M) INCREMENTS
- RATED SUBSTRATE MUST BE IN COMPLIANCE WITH UL REQUIREMENTS (BY OTHERS)
- LISTED BY INTERTEK USA/CANADA 2HR RATING
- MEETS UL 2079, ULC S-115, ASTM E-1399 AND ASTM E-1966-01
- ALL SIZES ARE AVAILABLE WITH A 2HR RATING. 3HR IS AVAILABLE FOR 6" AND LARGER JOINT SIZES

THIS FIRE BARRIER IS TESTED WITH A METAL COVER. IN AREAS WHERE ONLY ELASTOMERIC OR NO COVERS ARE USED, WE CAN PROVIDE A STAINLESS-STEEL FOIL TO MAINTAIN THE RATING



PROPRIETARY AND CONFIDENTIAL: THE INFORMATION CONTAINED IN THIS DRAWING, IS SOLE PROPERTY OF NYSTROM. ANY REPRODUCTION IN PART OR AS A WHOLE, WITHOUT THE WRITTEN PERMISSION OF NYSTROM, IS PROHIBITED. © 2020 NYSTROM, INC.

PROJECT:			
ARCHITECT:			
CONTRACTOR:			
QTY:			
PART#:		EJN-FLF-TM SERIES	
 9300 73rd Ave N., Minneapolis, MN 55428 800-547-2635 info@nystrom.com		TITLE: SEISMIC FIRE BARRIER FLOOR SYSTEM 1, 2 & 3 HOUR RATED TOP MOUNT APPLICATION	
NAME	DATE	SIZE	DWG. NO.
DRAWN JPK	03/13/24	A	EJN-FLF-TM SERIES
RELEASED		WEIGHT:	SHEET 1 OF 1