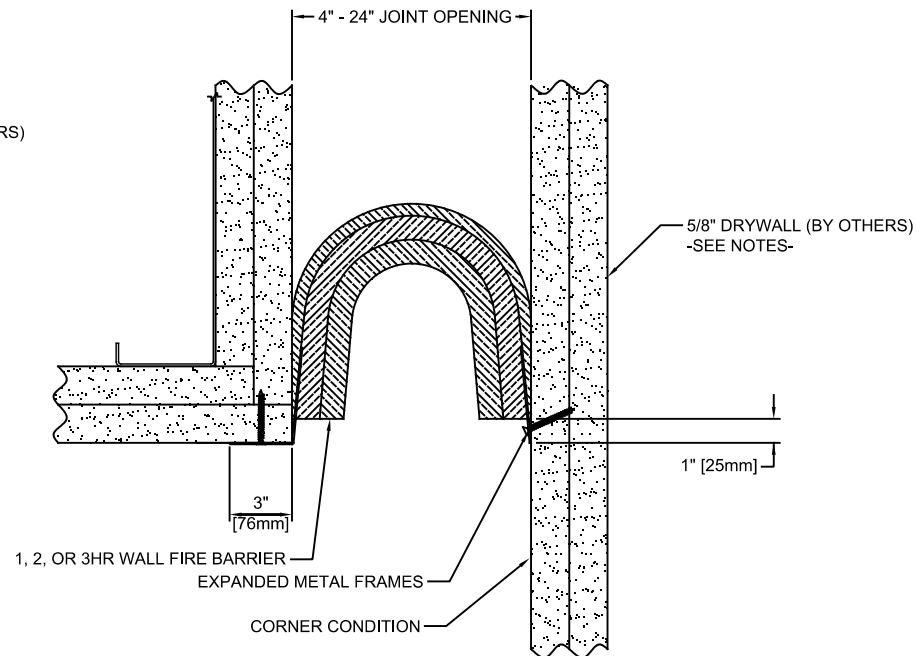


**EJN-FLW-TM SERIES**

**EXAMPLE P/N'S**

- 2HR RATING {
  - (4" JOINT OPENING : P/N = EJN-FLW-400-TM)
  - (10" JOINT OPENING : P/N = EJN-FLW-1000-TM)
  - (24" JOINT OPENING : P/N = EJN-FLW-2400-TM)
- 3HR RATING {
  - (6" JOINT OPENING : P/N = EJN-FLW-600-TM-3HR)
  - (10" JOINT OPENING : P/N = EJN-FLW-1000-TM-3HR)
  - (24" JOINT OPENING : P/N = EJN-FLW-2400-TM-3HR)



**EJN-FLW/w-TM SERIES**

**EXAMPLE P/N'S**

- 2HR RATING {
  - (4" JOINT OPENING : P/N = EJN-FLW-400W-TM)
  - (10" JOINT OPENING : P/N = EJN-FLW-1000W-TM)
  - (24" JOINT OPENING : P/N = EJN-FLW-2400W-TM)
- 3HR RATING {
  - (6" JOINT OPENING : P/N = EJN-FLW-600W-TM-3HR)
  - (10" JOINT OPENING : P/N = EJN-FLW-1000W-TM-3HR)
  - (24" JOINT OPENING : P/N = EJN-FLW-2400W-TM-3HR)



**SEISMIC FIRE BARRIER WALL SYSTEM - TOP MOUNT APPLICATION**

- MOVEMENT: +/- 50% (TOTAL = 100%)
- STOCK LENGTHS:
  - : 4" - 12" JOINT OPENINGS = 10 FT (3.0M) INCREMENTS,
  - : 14" - 24" JOINT OPENINGS = 4 FT (1.2M) INCREMENTS
- STANDARD WALL RATING MUST BE IN COMPLIANCE WITH UL REQUIREMENTS (BY OTHERS)
- LISTED BY INTERTEK USA/CANADA 1, 2, & 3 HR RATING
- MEETS UL 2079, ULC S-115, ASTM E-1399 AND ASTM E-1966-01
- ALL SIZES ARE AVAILABLE WITH A 2HR RATING. 3HR IS AVAILABLE FOR 6" AND LARGER JOINT SIZES

**THIS FIRE BARRIER IS TESTED WITH A METAL COVER. IN AREAS WHERE ONLY ELASTOMERIC OR NO COVERS ARE USED, WE CAN PROVIDE A STAINLESS-STEEL FOIL TO MAINTAIN THE RATING**

PROPRIETARY AND CONFIDENTIAL: THE INFORMATION CONTAINED IN THIS DRAWING, IS SOLE PROPERTY OF NYSTROM. ANY REPRODUCTION IN PART OR AS A WHOLE, WITHOUT THE WRITTEN PERMISSION OF NYSTROM, IS PROHIBITED. © 2020 NYSTROM, INC.

PROJECT:			
ARCHITECT:			
CONTRACTOR:			
QTY:			
PART#:		EJN-FLW-TM SERIES	
 9300 73 <sup>rd</sup> Ave N., Minneapolis, MN 55428 800-547-2635 info@nystrom.com		TITLE: SEISMIC FIRE BARRIER WALL SYSTEM 1,2 OR 3 HOUR RATED TOP MOUNT APPLICATION	
NAME	DATE	SIZE	DWG. NO.
DRAWN JPK	03/13/24	A	<b>EJN-FLW-TM SERIES</b>
RELEASED		WEIGHT:	SHEET 1 OF 1