

**EXPANDED
SIZES**



Fire-Rated

DIAMOND TREAD FLOOR DOOR

Nystrom Diamond Tread Floor Door is redesigned to offer larger sizes and is tested to NFPA 288 standards to offer 2 and 3-hour fire ratings. This floor door is reinforced for pedestrian traffic loads and features an aluminum diamond tread cover plate.

FEATURES

SIZES Industry-leading sizes up to 52"x96"

FIRE-RATED Tested to NFPA 288, this floor door is Warnock-Hersey labeled with 2- or 3-hour fire-rating with a maximum temperature rise of 250°F.

DETAILS

LOAD 250 PSF up to 48"x60"; 150 PSF above 48"x60"

COVER Diamond Tread Plate, Aluminum: 1/4" mill finish

FRAME Aluminum, Angle Frame, Thermally Broken

INSTALLATION Cast-In Standard, Bolt-In optional

SPRING Enclosed coil, Type 17-7 Stainless Steel

HINGES Heavy Duty Type 316 Stainless Steel

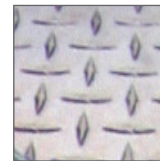
HOA Type 316 Stainless Steel, Optional self-closing

LATCH Slam latch Zinc-Plated Steel with inside lever handle

OPTIONS Self Closing Mechanism, Recessed Padlock Hasp, Mortise Lock

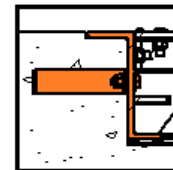
TEST NFPA 288, Warnock Hersey tested and listed by Intertek

MATERIALS



Aluminum

FRAME



Angle Frame
Cast-In



Angle Frame
Bolt-In

Fire Rated Diamond Tread Floor Door Order Guide

FDF is standard with 2-hour rating unless 3-hour rating is chosen under "Options"

MODEL	LOAD	MATERIAL	WIDTH	X	LENGTH	COVER & INSTALL	OPTIONS
				X			
FDF	P - 250 PSF	A - ALUMINUM	24"-48" ¹		24"-60"	SWL -	3HR - 3 HOUR RATING ³
FDF	L - 150 PSF		>48"-52" ²		>60"-96"	S - SINGLE DOOR W - ANCHORS PROVIDED L - HANDLE	BI - BOLT-IN INSTALLATION ⁴ MCG - MORTISE LOCK PR - RECESSED PADLOCK HASP SC - SELF CLOSING MECHANISM

¹ The load will default to "L" (150 PSF) for doors greater than 48" x 60" (e.g. DFFLA50x75SWL)

² The load will default to "P" (250 PSF) for doors up to and including 48"x60" (e.g. DFPA36x36SWL)

³ up to 48x60 only and 250 PSF only

⁴ 2-hour only

Additional sizes available, call for more information.

Download Drawings, CAD, Spec, and LEED documents at www.Nystrom.com