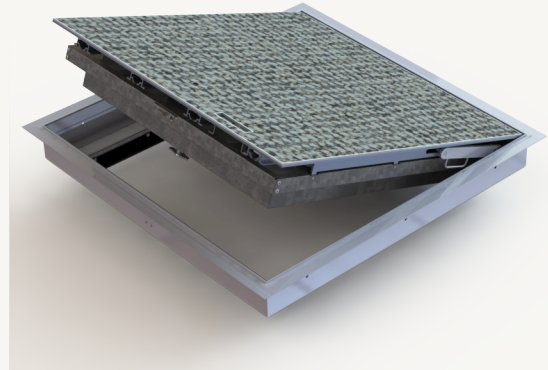


Fire-Rated Pan Floor Door

ARCHITECTURAL FLOOR DOOR WITH 1/8" OR 1" RECESSED COVER

EXPANDED SIZES

The redesigned Nystrom Fire-Rated Floor Door features industry-leading sizes, improved interior release handle and tested to NFPA 288 standards. The addition of a 1" recessed cover along with the 1/8" cover accepts a variety of inlaid material, such as wood, concrete, tile, carpet, or vinyl. Interior applications only.



FEATURES

MINIMAL SIGHT LINE Choose a 1/8" or 1" recessed cover for flooring infill to seamlessly integrate with the surrounding area.

FIRE-RATED 2- or 3-hour fire-ratings tested to NFPA 288 (1/8" has 2- or 3-hour, 1" has 2-hour only)



DETAILS

LOAD 250 psf live load up to 48"x60"
150 psf live load above 48"x60"

COVER Aluminum: 1/4" smooth plate with 1/8" or 1" recess

FRAME Aluminum, Angle Frame, Thermally Broken

INSTALLATION Cast-In Standard, Bolt-In optional

SPRING Enclosed coil, Type 17-7 Stainless Steel

HINGES Heavy Duty Type 316 Stainless Steel

HOA Type 316 Stainless Steel, Optional Self Closing

LATCH Slam latch zinc-plated Steel with inside lever handle

OPTIONS Self Closing Mechanism, Recessed Padlock Hasp, Mortise Lock

TEST NFPA 288, Warnock Hersey tested and listed by Intertek

FIRE RATED ARCHITECTURAL 1/8" PAN FLOOR DOOR ORDER GUIDE

FDF is standard with 2-hour rating unless 3-hour rating is chosen under "Options"

| MODEL | LOAD | MATERIAL | WIDTH | X | LENGTH | COVER & INSTALL | OPTIONS |
|-------|-------------|--------------|------------------------------------|-----------------------|-----------------------|--|---|
| FDF | P - 250 PSF | A - ALUMINUM | 24"-48" (250 PSF) ² | 24"-60" (250 PSF) | 24"-60" (250 PSF) | SWL - S - SINGLE DOOR W - ANCHORS PROVIDED L - HANDLE | T1 - 1/8" INCH TILE DOOR 3HR - 3 HOUR RATING ³ BI - BOLT-IN INSTALLATION ⁴ SC - SELF CLOSING MECHANISM PR - RECESSED PADLOCK HASP MCG - MORTISE LOCK |
| FDF | L - 150 PSF | A - ALUMINUM | >48"-52" (150 PSF) ¹ | >60"-96" (150 PSF) | >60"-96" (150 PSF) | SWL - S - SINGLE DOOR W - ANCHORS PROVIDED L - HANDLE | T1 - 1/8" INCH TILE DOOR 3HR - 3 HOUR RATING ³ BI - BOLT-IN INSTALLATION ⁴ SC - SELF CLOSING MECHANISM PR - RECESSED PADLOCK HASP MCG - MORTISE LOCK |

¹ The load will default to "L" (150 PSF) for doors greater than 48" x 60" (e.g. FDFLA50x75SWL)

² The load will default to "P" (250 PSF) for doors up to and including 48" x 60" (e.g. FDFPA36x36SWL)

³ up to 48x60 only and 250 PSF only

⁴ 2-hour only

FIRE RATED ARCHITECTURAL 1" PAN FLOOR DOOR ORDER GUIDE

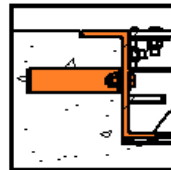
| MODEL | LOAD | MATERIAL | WIDTH | X | LENGTH | COVER & INSTALL | OPTIONS |
|-------|-------------|--------------|---------|---------|---------|--|--|
| FDF | P - 250 PSF | A - ALUMINUM | 24"-48" | 24"-48" | 24"-48" | SWL - S - SINGLE DOOR W - ANCHORS PROVIDED L - HANDLE | P1 - 1" INCH TILE DOOR BI - BOLT-IN INSTALLATION SC - SELF CLOSING MECHANISM |

MATERIALS

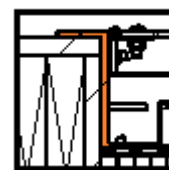


Aluminum

FRAME



Angle Frame
Cast-In



Angle Frame
Bolt-In