

SEISMIC ALUMINUM GLIDE WALL & CEILING SYSTEM, SURFACE APPLICATION

Model(s): NBW-NBWw

NBW Wall to Wall/Ceiling System – 1” Through 8” Sizes



GENERAL DESCRIPTION

This Seismic Glide Wall & Ceiling Surface Application system is capable of multi-directional changes, as well as integrating with a variety of wall and ceiling surface treatments. Seismic Glide is available in clear anodized aluminum to create a sleek look at an economical price.

GENERAL SAFETY PRECAUTIONS Improper selection, installation, or use can cause personal injury or property damage. It is solely the responsibility of the user, through their own analysis, to select products suitable to the specific application requirements, ensure proper maintenance and use as intended. Follow local, state, and federal regulations for proper installation and operation requirements.

Introduction + Safety

Please read the complete instructions carefully before beginning any work. To ensure proper installation and performance of the product, the following actions must be completed by the installing contractor. Failure to do so will affect product warranty.

Transportation + Storage

- Inspect all shipments and materials for missing or damaged components and hardware.
- Material must be stored in a clean, dry location.

Preparation

- Locate the packing slip(s) and/or shop drawings.
- Verify that all products listed on the packing slip are included in the package.
- Check the products for damage. If products are damaged, report a freight claim immediately and leave the products in their packaging. If you sign for products without reporting damage, you waive your right to a freight claim and will be responsible for their replacement cost.
- Read the instructions thoroughly before beginning installation.

Direct Service Done Right

Since 1948, Nystrom has been the go-to manufacturer of specialty building products providing a wide range of floor, roof, wall, ceiling, and stair access products that create safer, more accessible buildings. We offer hassle-free services including access to technical experts, REVIT tools for BIM, HPDs for LEED v4, 3-part specifications and AIA-accredited continuing education courses.

Tool List

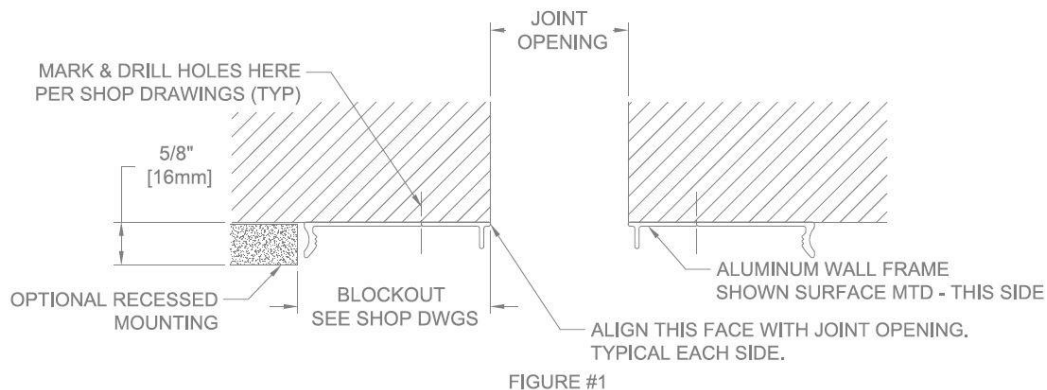
- Tape measure
- Chop saw to cut product to length
- Electric drill with $\text{Ø}3/16$ " masonry bit & $\text{Ø}1/4$ " metal bit
- Proper drivers for anchors
- Broom & dustpan or vacuum
- Level
- Silicone sealant

Preinstallation

1. Ensure the area where the expansion joint system is being installed (including the recessed mounting area) is smooth and level. High spots should be leveled and low spots filled in. Make sure the area is clean by brushing and/or vacuuming the substrate.

INSTALLATION (Wall-to-Wall / Ceiling-to-Ceiling ONLY)

1. After predrilling $\text{Ø}3/16$ " clearance holes in the Aluminum Wall Frames per the shop drawings, position them in the recessed area (or surface mounted) as shown below. Align the Aluminum Wall Frame profile with the edge of the joint opening. Then using the frame as a template, mark, and drill $\text{Ø}5/32$ " holes for the $\text{Ø}3/16$ " Anchors as shown on the Shop Drawings. **See Figure #1**



2. Set the Aluminum Wall Frames into position and attached with anchors (by installer)

3. Set the Aluminum Base Frames into position and attach with supplied threaded anchors through the previously drilled holes. Before installing the Aluminum Wall Frames to the recessed opening with supplied anchors, make sure the Frame Profile is still aligned with the joint opening on each side. **See Figure #2.**

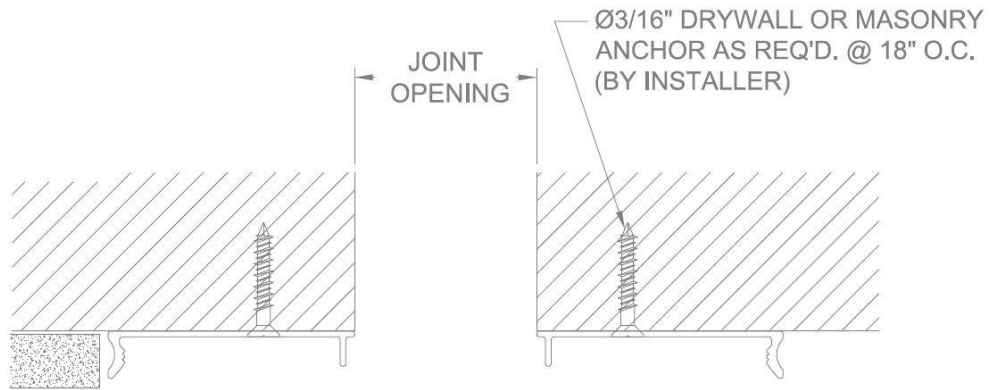


FIGURE #2

4. Measure and cut and Slide Gasket to length and push gasket into the groove in the Aluminum Wall Cover – typical both sides of joint opening. **See Figure #3.**

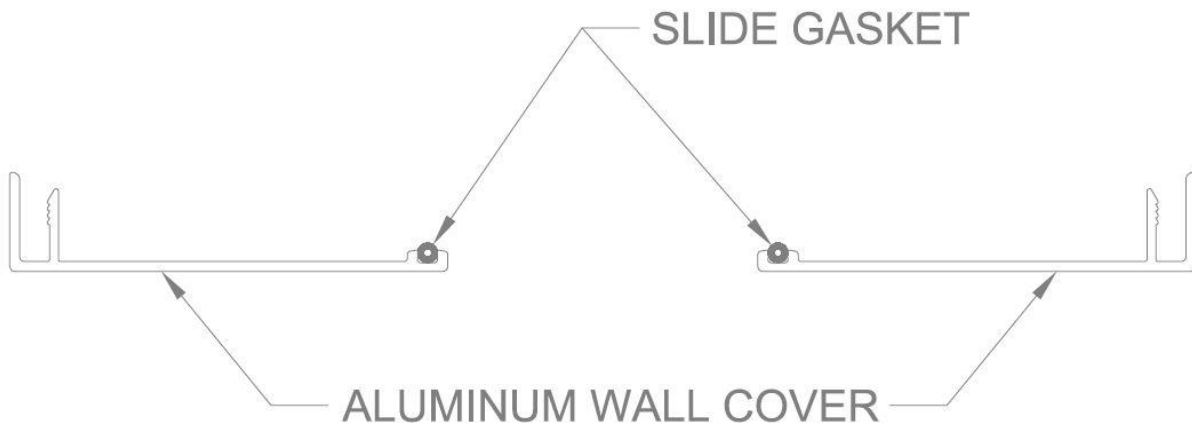


FIGURE #3

5. Place and center the Aluminum Glide across the center of the joint opening as shown on the Shop Drawings. It is held in place on each side by the Aluminum Wall Covers – see Shop Drawings. Once it's determined that the Aluminum Glide is centered, gently press the Aluminum Wall Covers into place (one each side). Care must be taken so that: 1) the Glide is firmly held in place and 2) the Aluminum Covers are firmly in place and level. Place a level across the entire system to confirm it's placed correctly. **See Figure #4.**

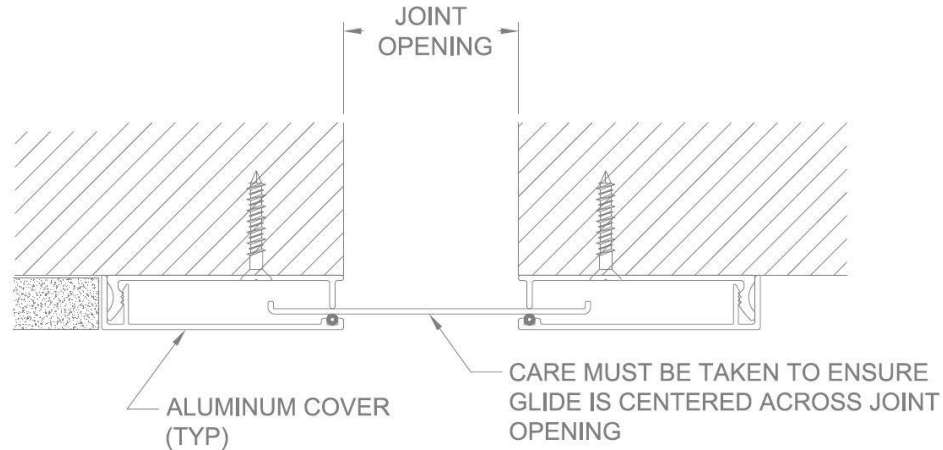


FIGURE #4

6. Final step: if required, apply Sealant or Grout (by installer) as shown on Shop Drawings. **See Figure #5.**

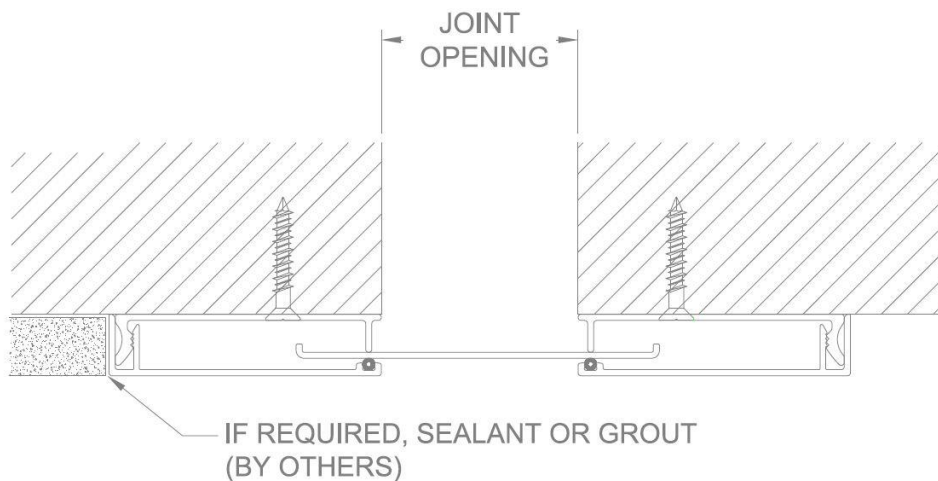
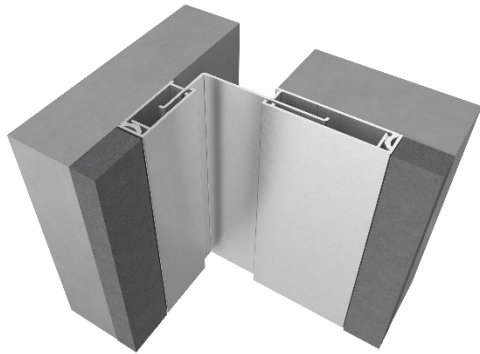


FIGURE #5

NBW Wall to Wall/Ceiling System – 1” Through 8” Sizes

GENERAL DESCRIPTION



Nystrom NBWw Interior Wall System is designed to match the NBW system in corner applications.

Preinstallation

1. Ensure the area where the expansion joint system is being installed (including the recessed mounting area) is smooth and level. High spots should be leveled and low spots filled in. Make sure the area is clean by brushing and/or vacuuming the substrate.

INSTALLATION (Wall-to-Corner ONLY)

1. After predrilling Ø3/16” clearance holes in the Aluminum Base Frames per the shop drawings, position them in the recessed opening or surface mount them.

2. As shown below, align the Aluminum Wall Frame profile with the edge of the joint opening. Then using the frame as a template, mark and drill $\text{Ø}5/32$ " holes for the $\text{Ø}3/16$ " Anchors (by installer) as shown on the Shop Drawings. **See Figure #6**

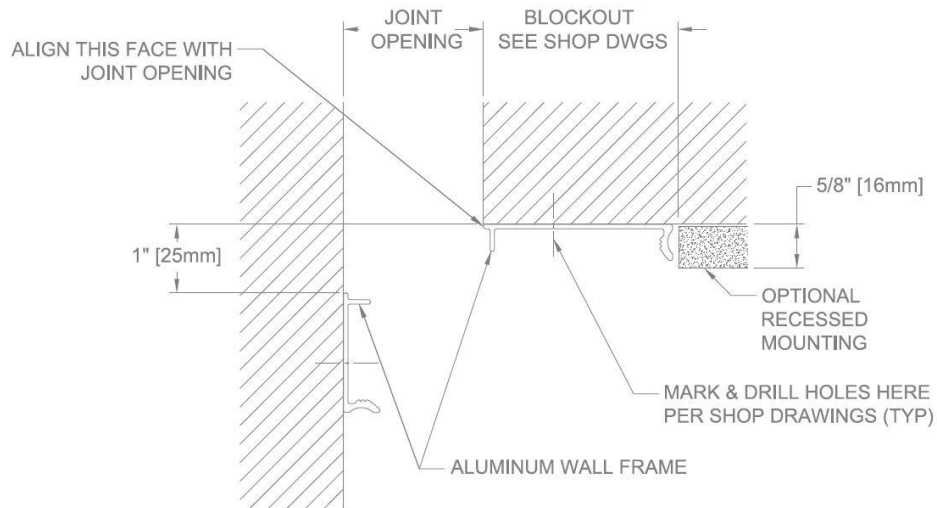


FIGURE #6

3. Using care realign the holes and profile face joint opening, set the Aluminum Wall Frames back into position and attach with $\text{Ø}3/16$ " anchors (by others) through the previously drilled holes. Before installing the Aluminum Base Frames to the blockout opening with supplied anchors, make sure the Frame Profile is still aligned with the joint opening. **See Figure #7.**

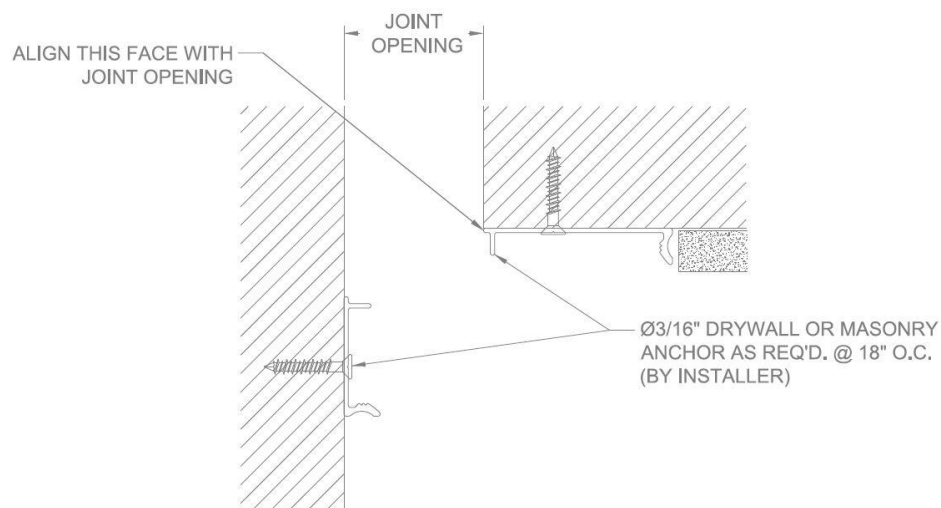


FIGURE #7

4. Measure and cut and Slide Gasket to length and push gasket into the groove in the Aluminum Wall Cover – typical both sides of joint opening. **See Figure #8.**

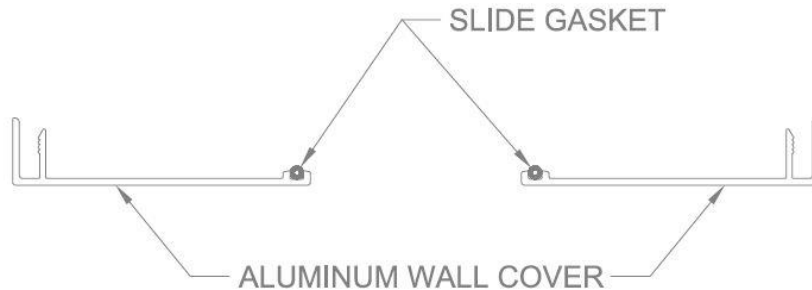


FIGURE #8

5. Place and center the Aluminum Glide across the opening as shown on the Shop Drawings. It is held in place and installed as shown below. Once it's determined that the Aluminum Glide is installed, gently press the Aluminum Covers into place. Care must be taken so that: 1) the Glide is firmly held in place and 2) the Aluminum Covers are firmly in place and level. Place a level across the entire system to confirm it's placed correctly. **See Figure #9.**

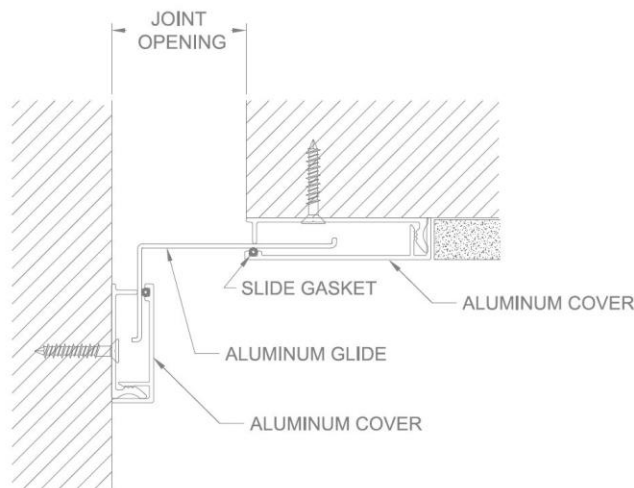
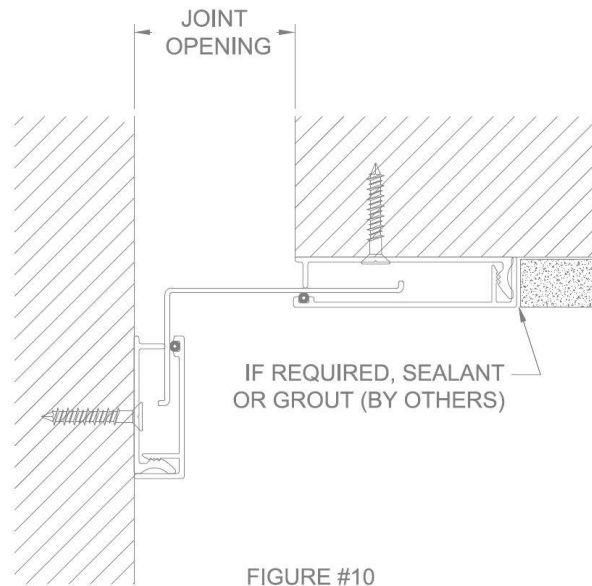


FIGURE #9

6. Final step: if required, apply Sealant or Grout (by installer) as shown on Shop Drawings.
See Figure #10.



OPERATION

Expansion Joints are designed and built for years of dependable service.

MAINTENANCE

Perform annual inspections to make sure the system is in position; all fasteners are tight and in place and there is no impedance of joint cover movement. Repair and/or replace as needed.

QUESTIONS?

For more information on installation, repair, or replacement, please contact Customer & Sales Support at 800-547-2635 or visit nystrom.com