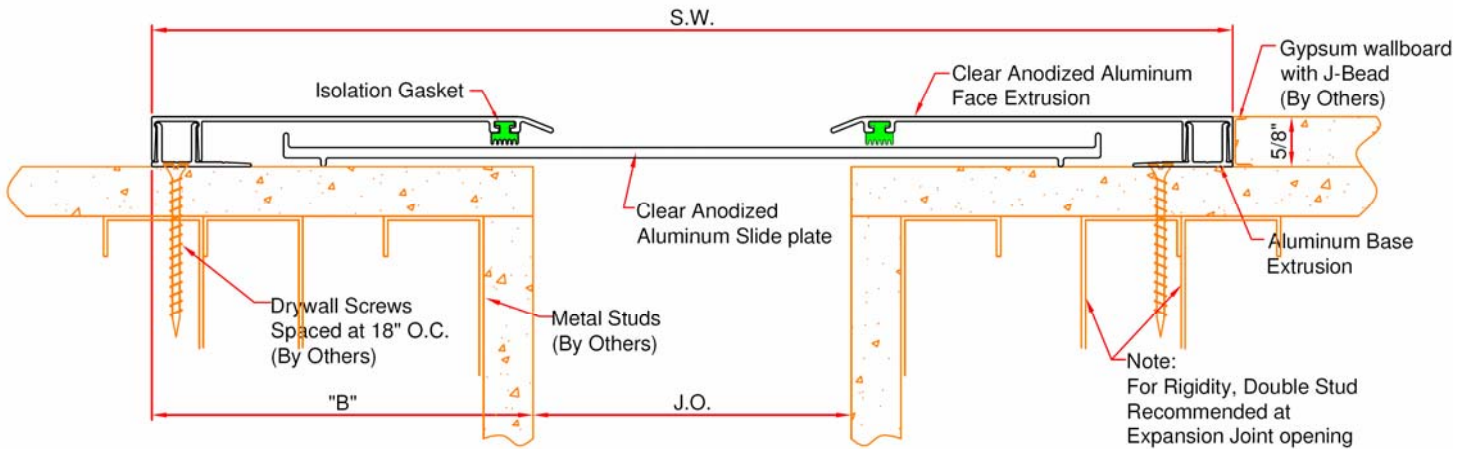


EJ-WCS-400 thru -600

Expansion joint cover for walls

Wall to wall condition



EJ-WCS-400 THRU -600 DETAIL
WALL-TO-WALL CONDITION

DIMENSION CHART						
Model	J.O. @ Min.	J.O. @ Mid	J.O. @ Max.	"B"	Total Movement	System Width
-WCS-400	2" (51)	4" (102)	9" (229)	4 13/16" (122)	7" (178)	13 9/16" (344)
-WCS-500	2" (51)	5" (127)	9" (229)	4 13/16" (122)	7" (178)	14 9/16" (370)
-WCS-600	2" (51)	6" (152)	9" (229)	4 13/16" (122)	7" (178)	15 9/16" (395)

Note: Minimum And Maximum Values Are After Movement Occurs. Mid Point Value Is The Recommended Size Of Opening At Installation.



9300 73rd Avenue North
Minneapolis, MN 55428