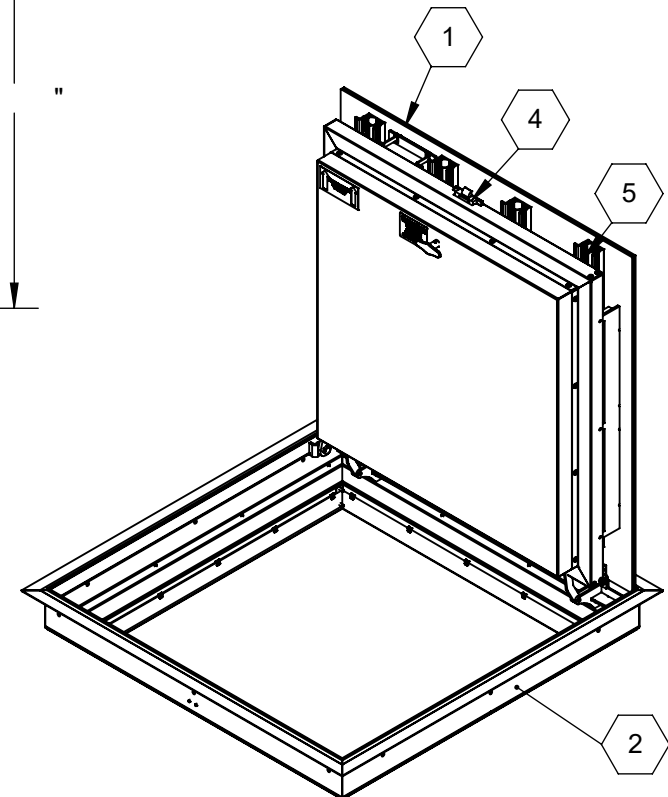


HINGE SIDE TILE TRIM
GAP DETAIL



SPECIFICATIONS:

- ① **DOOR:**
ALUMINUM 1/4" SMOOTH PLATE WITH 1/8" TILE EXTRUSION
RECESS FOR FLOORING INFILL, MILL FINISH WITH A LIVE LOAD
OF 250PSF WITH A MAX SPAN DEFLECTION OF L/150
- ② **FRAME:** ALUMINUM, 1/4" EXTRUSION
- ③ **HINGES:** TYPE 316 STAINLESS STEEL
- ④ **SLAM LATCH:**
ZINC-PLATED STEEL WITH INSIDE HANDLE MECHANISM AND
OUTSIDE REMOVABLE HANDLE
- ⑤ **COUNTER-BALANCE SPRING:**
ENCLOSED, TYPE 17-7 SST SPRING
- ⑥ **HOLD-OPEN ARM:** TYPE 316 STAINLESS STEEL
OPTIONAL SELF-CLOSING MECHANISM

- ⑦ **ANCHOR:** 3/8" HOLES PROVIDED, BOLTS SUPPLIED BY OTHERS
- ⑧ **PLUG SEAL:** TYPE 316 STAINLESS STEEL

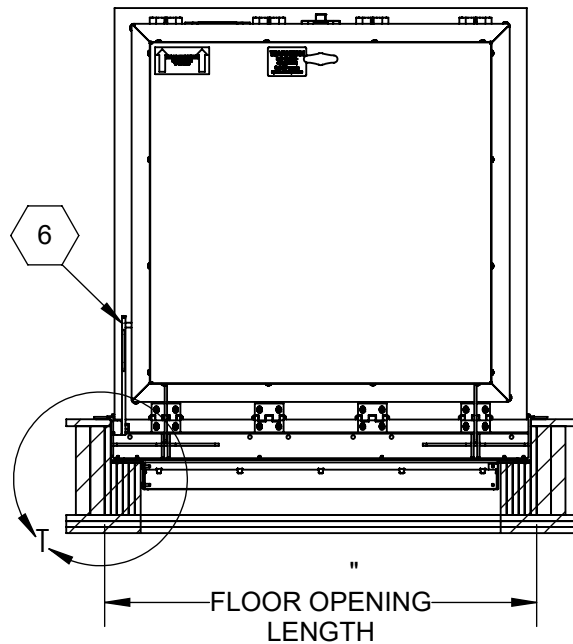
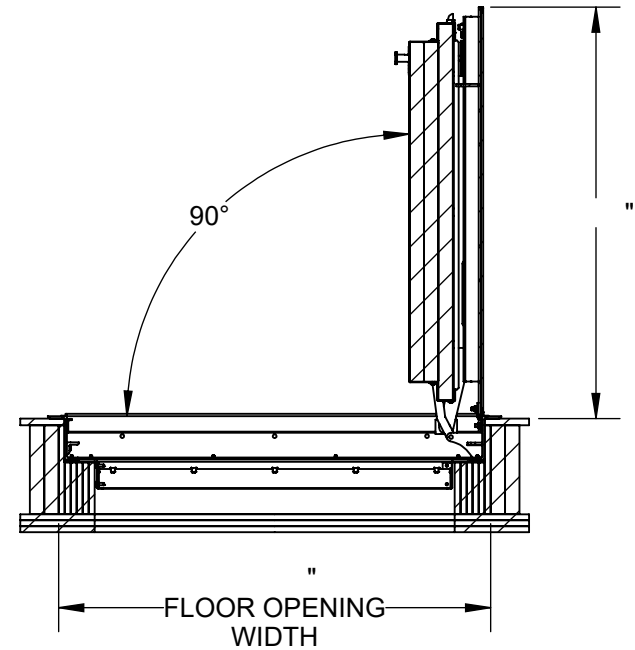
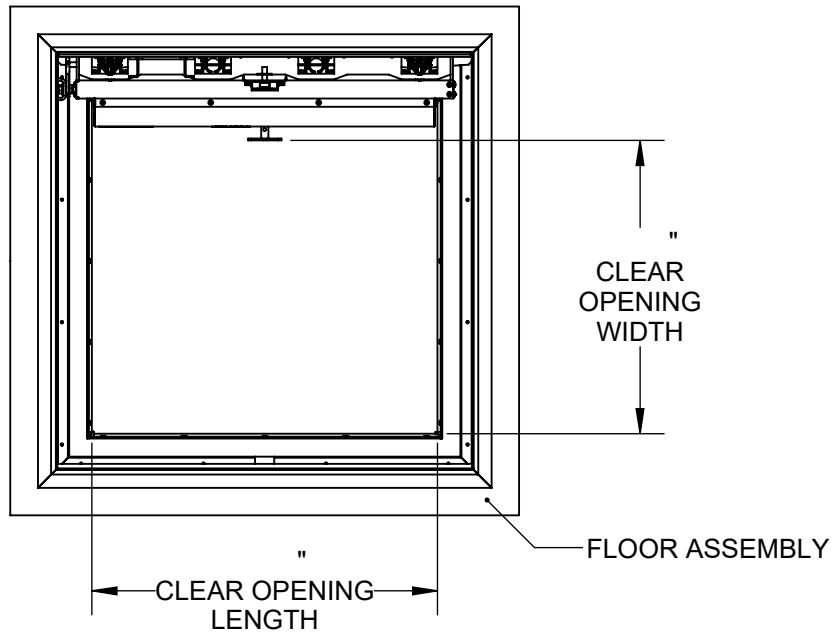
CERTIFICATION: 2-HOUR FIRE RATED, WARNOCK HERSEY LABELED AND
TESTED TO NFPA 288: STD METHODS OF FIRE TEST OF HORIZONTAL
FIRE DOOR ASSEMBLIES. MAX TEMPERATURE RISE OF 250F.

APPLICATION NOTE: FLOOR DOOR MUST BE KEPT DRY BEFORE,
DURING, AND AFTER INSTALLATION. FOR DRY, INTERIOR INSTALLATION
ONLY. NOT INTENDED FOR EXTERIOR OR WET ENVIRONMENTS OR FOR
FREQUENT EGRESS. UNITS LARGER THAN 36" X 36" MAY REQUIRE TWO
PEOPLE TO OPERATE SAFELY.

FLOOR DOOR SIZE:

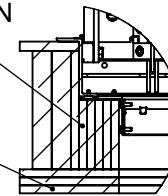
PROPRIETARY AND CONFIDENTIAL: THE INFORMATION CONTAINED IN THIS DRAWING IS THE SOLE PROPERTY OF NYSTROM. ANY REPRODUCTION IN PART OR AS A WHOLE WITHOUT THE WRITTEN PERMISSION OF NYSTROM IS PROHIBITED. ©2020 NYSTROM, INC.

PROJECT:			
ARCHITECT:			
CONTRACTOR:			
QTY:			
PART#:			
		TITLE:	
		FD, 2hr Fire Rated, 250 psf, , Sngl Dr, Alum, 1/4" Smth Plt, 1/8" Tile, Mill, Angle Frame, Bolt-In, SST Spring Asst, 316 SST HDW, Slam Latch w/Hdl	
9300 73rd Avenue North Minneapolis, MN 55428			
	NAME	DATE	SIZE
DRAWN	BES		A
RELEASED	BES		WEIGHT:
		DWG. NO.	REV
		Nystrom FD FDFPA_X_SWL-BI-T1 ShpDr	
		SHEET 1 OF 2	

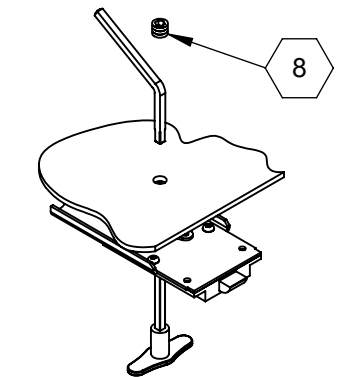


6 LAYERS GYPSUM
REQ'D TO MAINTAIN
FIRE RATING

3 LAYERS
GYPSUM



BOLT-IN DETAIL



SLAM LATCH DETAIL



9300 73rd Avenue North
Minneapolis, MN 55428

TITLE: FD, 2hr Fire Rated, 250 psf,
, Sngl Dr, Alum, 1/4" Smth Plt, 1/8" Tile,
Mill, Angle Frame, Bolt-In,
SST Spring Asst, 316 SST HDW, Slam Latch w/Hdl

	NAME	DATE	SIZE	DWG. NO.	REV
DRAWN	BES		A	Nystrom FD FDFPA_X_SWL-BI-T1 ShpDr	
RELEASED	BES		WEIGHT:		SHEET 2 OF 2