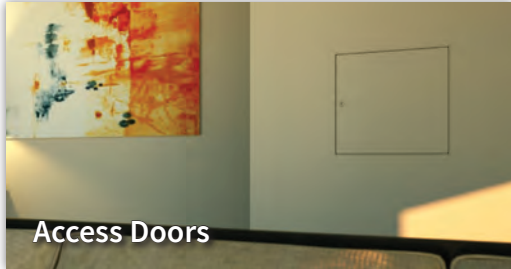




Direct Service Done Right

Product Portfolio

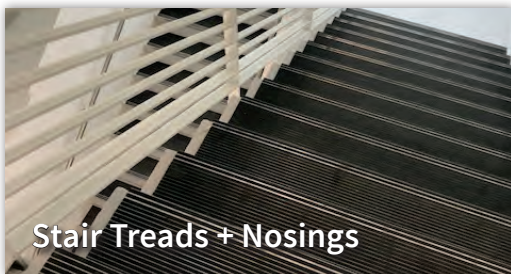
Divisions 5, 7, 8, 10 + 12



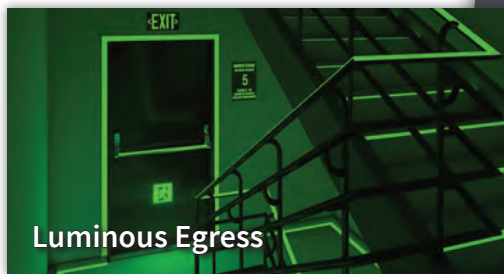
Access Doors



Expansion Joint
Systems + Joint Seals



Stair Treads + Nosings



Luminous Egress



Roof Hatches



Smoke Vents



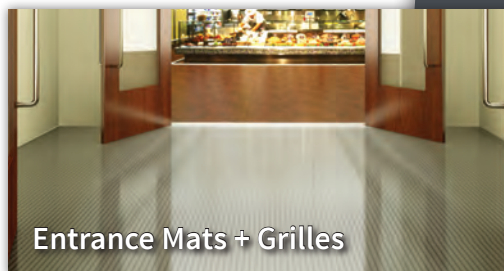
Fall Protection



Floor Door + Hatches



Fire Cabinets +
Extinguishers



Entrance Mats + Grilles

Download
Product
Catalogs



9300 73rd Avenue North
Minneapolis, MN 55428

Phone (800) 547-2635
Fax (866) 900-1959
info@nystrom.com

nystrom.com

Featured Products

With a focus on quality and customer satisfaction, Nystrom Building Products offers new products to address the diverse needs of architects, contractors, and building owners.

Download
Product
Catalogs



HVAC Access Door



Best-in-class Access Door for single packaged vertical heating & cooling units:

- Insulated
- Custom Sizes
- Return Air Option
- Pre-Hung Door Alternative

Expansion Joint Systems



Acquiring Architectural Art Manufacturing expanded our expansion joint offering of interior, exterior, parking, rooftop, DOT, and seal systems.

AcousticMAX™ Smoke Vent



- STC 50, OITC 47, ISO 140-18 sound rating 36.7 dB
- Superior Sound Control
- Pre-finished Black Interior

EcoTread™ Stair Nosing



The industry's only sustainable safety treads:

- Made from 90% recycled rubber
- Easily replaceable
- 100% recyclable materials
- Easy to clean and maintain
- Fade and wear resistant
- 4 color choices

Hassle Free Specialty Building Products

Since 1948, Nystrom has been the direct-to-contractor, go-to manufacturer for specialty building products.

Today we provide a wide range of wall, ceiling, floor, roof and safety related access products that help create safer, more accessible buildings.

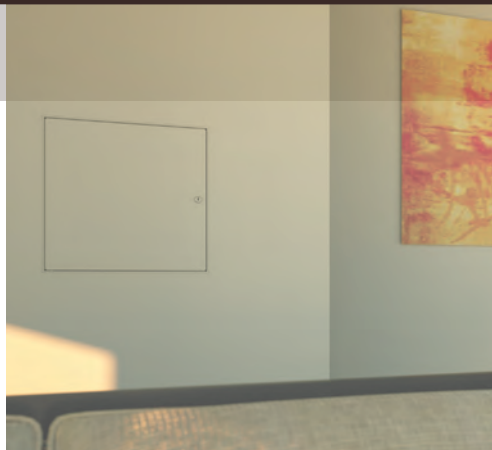
Connect With Our Team:

ACCESS DOORS + PANELS

08 3100

Provide easy access to mechanical, electrical and plumbing fixtures behind walls and ceilings.

- **Non-Rated**
- **Fire-Rated**
- **Security**
- **Specialty**
- **Exterior**
- **HVAC**



Division 8



EXPANSION JOINT SYSTEMS

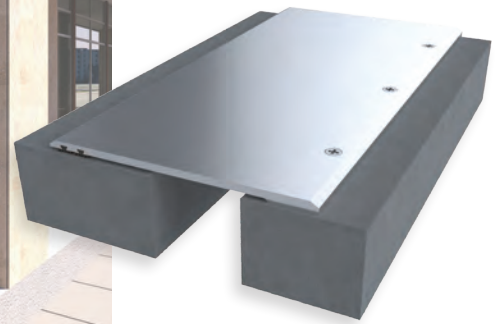
07 9100 + 07 9513

Designed to seamlessly seal, cover, and expand, providing solutions for complex building movement.

- **Interior Floor, Wall + Ceiling**
- **Exterior Wall, Roof**
- **Parking Deck and Stadium Structures**
- **Fire Barrier**
- **Compression Seals**



Division 7



STAIR NOSINGS + TREADS

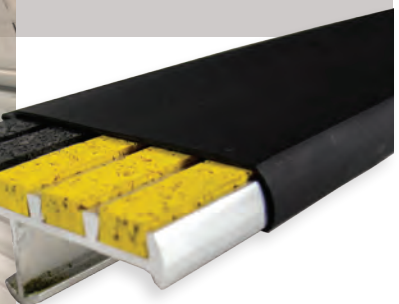
05 5000

Our metal stair tread nosings are ADA and OSHA compliant, have anti-slip safety treads, are suitable for indoor and outdoor environments and are available in UL listed photoluminescent.

- **Ribbed**
- **Full Bar**
- **Inset**
- **Photoluminescent**
- **Two-Part**
- **Renovation**
- **Cast**
- **EcoTread™**
- **Stair Nosing Guards™**



Division 5



Find Nystrom specifications at:

MasterSpec®
a product of The American Institute of Architects

RIB formerly BSD

BIMsmith®

Download
Product
Catalogs



800-547-2635 | info@nystrom.com

LUMINOUS EGRESS PRODUCTS 10 1443

2021 IBC/IFC compliant products to assist with safe egress in the event of a power outage.

- Handrails
- Demarcation
- Obstacle Marking
- Signage
- Stair Treads + Nosings



Division 10



ROOF HATCHES 07 7200

Provides safe access to roof areas on buildings. Available with fall protection and a variety of materials and finishes.

- ThermalMAX™
- Personnel™
- Thermally Broken
- Daylighting
- Security
- Equipment
- Fall Protection



Division 7



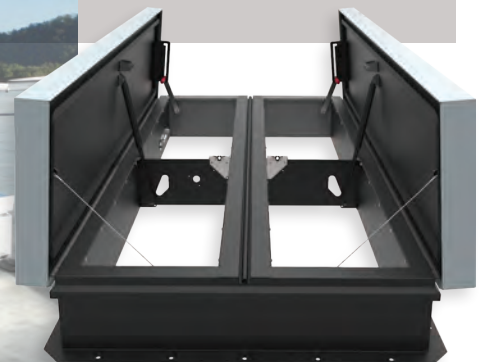
SMOKE VENTS 07 7200

Our rooftop smoke vents are designed to meet fire and life safety building codes. As required by IBC, these vents automatically open to release heat, smoke, and noxious fumes in the event of an emergency.

- SafeMax™
- SunLit™
- AcousticMAX™
- Fall Protection



Division 7



FLOOR DOORS + HATCHES

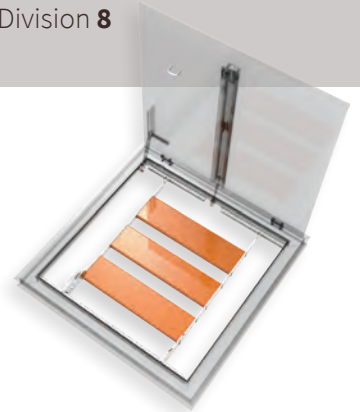
08 3483

Floor and vault doors provide safe, reliable access below ground and between building floors.

- **Fire-Rated**
- **Drainable**
- **Non-Drainable**
- **Architectural**
- **Retrofit**
- **Well Hatches**
- **Fall Protection**



Division 8



FALL PROTECTION

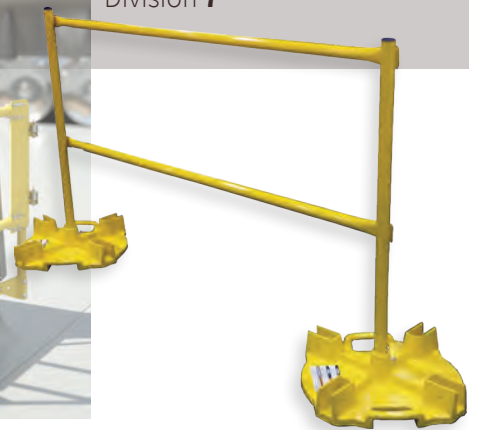
05 5213 / 07 7200

Keep people safe while working on rooftops and other structures with OSHA compliant systems.

- **Safety Railings**
- **Guardrails**
- **Safety Accessories**



Division 7



ENTRANCE MATS + GRILLES

12 4813/12 4816

Improve indoor air quality by stopping dirt from entering the building while reducing interior chemicals, pollutant source control and maintenance costs.

- **Architectural Grilles**
- **Rigid Grilles**
- **Roll-Up Grilles**
- **Roll-Up Mats**
- **Vinyl Mats**



Division 12



FIRE PROTECTION CABINET + FIRE EXTINGUISHERS

07 7200

Meet fire safety needs and complement interior decor.

- **Fire Cabinets**
- **Portable Fire Extinguishers**
- **Detention Cabinets**
- **Fire Blanket Cabinets**
- **Accessories**



Division 7



Local Sales Partners

ATLANTA

SBS Associates
(770) 923-9227 | sales@sbsassoc.com
sbsassoc.com

LOS ANGELES

The Z Group
(818) 340-1011 | info@thezgroup.com
thezgroup.com

SAN FRANCISCO

Nystrom
(763) 488-9268 | mwoolley@nystrom.com
nystrom.com

BOSTON

Gavin Associates, Inc.
(508) 381-1090 | lee@gavinassociates.com
gavinassociates.com

MINNEAPOLIS

Nystrom
800-547-2635 | info@nystrom.com
nystrom.com

SEATTLE

Hughes Agency
(253) 939-8115
ann@premierhardwareproducts.com

CHICAGO

Life Safety Hardware Consultants
(815) 790-2056 | michael@lshc.com
lshc.org

NEW YORK

Gavin Associates, Inc.
(508) 381-1090 | lee@gavinassociates.com
gavinassociates.com

ST. LOUIS

D.L. Neuner Company
(314) 962-2377 | davidk@dlneuner.com
dlneuner.com

DALLAS

Architectural Security Group, Inc.
(972) 665-0140 | mmellone@archsecurity.com
archsecurity.com

ORLANDO

Christy Associates
(407) 896 1800 | info@christyrepos.com
christysales.com

WASHINGTON D.C.

Nystrom
(763) 488-9233 | aleach@nystrom.com
nystrom.com

DENVER

Steele-Bréz & Associates, Inc.
(303) 922 3692 | darlene@steelebrez.com
steele-brez.com

Scan to Download
Product Catalogs



9300 73rd Avenue North | Minneapolis, MN 55428 | Phone (800) 547-2635 | Fax (866) 900-1959 | info@nystrom.com | nystrom.com

