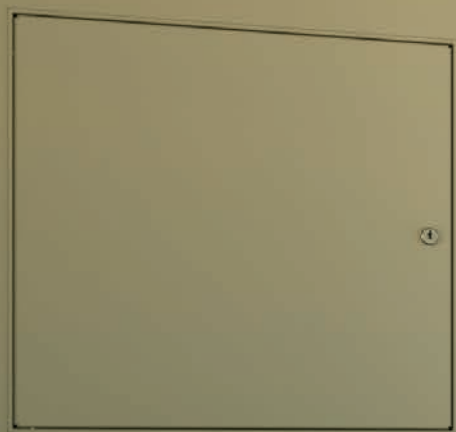
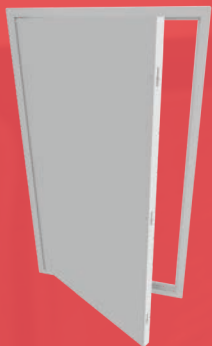




Direct Service Done Right



NEW!
HVAC Door



Access just got easier!
Page 5

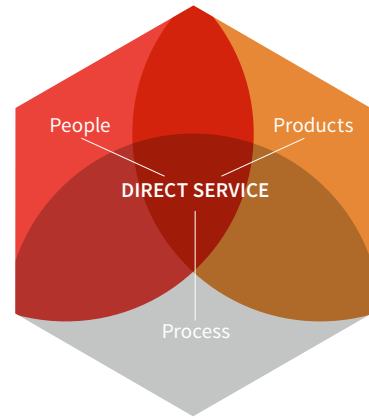
08 3100
Access Doors + Panels
Catalog



Direct Service Done Right

Nystrom offers a broad line of specialty building products to better serve construction professionals and architects.

We have customer focused professionals and hassle-free processes that directly serve and simplify the building process.



PEOPLE

architects, engineers, designers, estimators, construction professionals, and service specialists

PROCESS

estimating & bid design support, tech support, logistics support, installation support, cad, revit/bim

PRODUCTS

standard & custom designs, warehousing, quality assurance, exceptional warranties, leed certification, labeling & tagging

TIME

EFFICIENCY

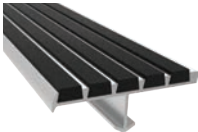
SERVICE

SPECIFICATION SUPPORT

By giving architects, designers and contractors open access to our expert team, we simplify the process of specifying and procuring access products from design through delivery and installation.

DIV 5

STAIR TREADS + NOSINGS 05 5000



FALL PROTECTION 05 5213 / 07 7200



For over 70 years Nystrom has been the go to manufacturer for specialty building products.

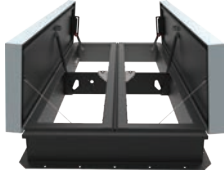
Today we provide a wide range of floor, roof and safety related access products that help create safer, more accessible buildings.

DIV 7

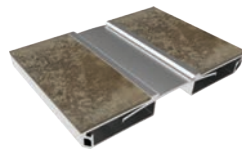
ROOF HATCHES 07 7200



SMOKE VENTS 07 7200



PREFORMED JOINT SEALS + EXPANSION JOINT SYSTEMS 07 9100 + 07 9513



ACCESS DOORS + PANELS 08 3100



FLOOR DOORS + HATCHES 08 3483



DIV 8

DIV 10

LUMINOUS EGRESS PRODUCTS 10 1443



FIRE PROTECTION CABINET + FIRE EXTINGUISHERS 10 4413 + 10 4416



ENTRANCE MATS + FRAMES ENTRANCE FLOOR GRILLES 12 4813 + 12 4816



DIV 12



DIVISION 08 3100

Access Doors

NON-RATED

4-9

Architectural	4
HVAC	5
Gasketed	6
Drywall	7
Recessed	7
Concealed Drop In	8
Concealed Hinge	9

FIRE RATED

10-12

Insulated	10
Uninsulated	11
Oversized Attic	11
Tile Ready	12
Upward Opening	12

SECURITY

13-15

Fire-Rated	13
Medium	14
High	14
Top	15

SPECIALTY

15-18

Draft Stop	15
Exterior	16
Coastal Zone Exterior	17
Lightweight	18
Plastic	18

Options

Materials	19
Additional	19
Hinges	19
Flanges	19
Latches + Locks	19
Finishes	19

Architectural

ACCESS DOOR

The Nystrom Architectural Access Door is built with the architect in mind. Constructed with an industry-standard steel door, the design further improves on strength and aesthetics.

FEATURES

ANTI-FLEX FRAME Fasteners are inserted through our patent-pending Easy Install Tabs, firmly fitting the door to the wall without flexing the frame.

PAINLESS INSTALLATION When fasteners are not required, quickly and easily install your new panel by bending our Easy Install Tabs over the drywall.

OPTIONAL STAINLESS STEEL The spot free design on the face of the door gives an aesthetically pleasing appearance.

DETAILS

DOOR

- NT/NW: 16 gauge Steel
- NP: 14 gauge Steel
- 16 gauge Stainless Steel, Type 304

FRAME

- 16 gauge Steel
- 16 gauge Stainless Steel, Type 304

SIZE

Single Door

- Min: 6 inches by 6 inches
- Max: 24 inches by 72 inches or 48 inches by 48 inches

Double Door

- Min: 24 inches by 24 inches
- Max: 36 inches by 72 inches or 48 inches by 64 inches

INSTALLATION Ceiling or Wall

FLANGE 1 inch Exposed, Drywall Bead or Plaster Bead

HINGE Concealed Spring Button or Flush Continuous Piano

PAN DEPTH ½ inch

FINISH White Powder Coat (Steel) or #4 Satin (Stainless Steel)

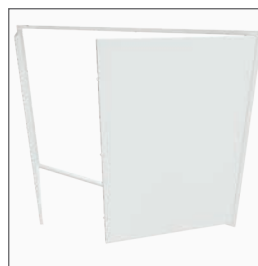
ORDER GUIDE

BASE	FLANGE	LATCH	WIDTH	X	LENGTH	OPTIONS
N				X		
	T 1 inch Flange	C Screwdriver Cam Latch	Standard Sizes Single Door Only			B Galvannealed
	W Drywall Bead	L Key operated Cam Lock	6" x 6"	16" x 20"	24" x 36"	F14 14 gauge Frame & Door
	P Plaster Bead	M Mortise Lock (1-½") Prep	8" x 8"	18" x 18"	24" x 48"	L Louvered Door
		N Knurled Knob Latch	10" x 10"	18" x 24"	30" x 30"	S Stainless Steel, Type 304
			12" x 12"	20" x 30"	30" x 36"	D14 14 gauge Door
			12" x 18"	22" x 22"	32" x 32"	D Double Door
			12" x 24"	22" x 30"	36" x 36"	
			14" x 14"	24" x 24"		
			16" x 16"	24" x 30"		

Double doors are available (Some options may not be available). Rough opening is door size + ¼ inch minimum. Additional sizes available, call for more information.

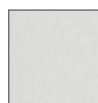
Lead Time Average is 1-10 Days for standard sizes. Delivery time is additional.

OPTION



Double Door

MATERIALS



White Powder Coat



#4 Satin Stainless Steel

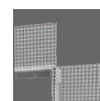
FLANGES



1 inch Flange



Drywall Bead



Plaster Bead

LATCHES



Screwdriver Cam Latch



Key Operated Cam Lock



Mortise Lock Prep



Knurled Knob



HVAC ACCESS DOOR

NEW

The HVAC Access Door is available in large sizes to provide easy access for service and repair of equipment.

FEATURES

INSULATED 1½-inch thick fiberglass insulation (Linacoustic) provides superior acoustical and thermal performance.

RETURN AIR OPTION Perforated return air to meet free air requirements.

GASKET OPTIONS EPDM Reduces sound transmission and maintains air filtration.

CUSTOM SIZES Custom sizes are available, from 28 inches by 42 inches to 36 inches by 72 inches.

PREHUNG DOOR ALTERNATIVE Requires no additional hardware or trim. Reduce install time. Provides a sleek integrated finished look.

DETAILS

DOOR

- 20 gauge Steel
- Liner option 20 gauge Steel

FRAME 16 gauge Steel

SIZE

- Min: 28 inches by 42 inches
- Max: 36 inches by 72 inches

INSTALLATION Wall

FLANGE 1¼ inch Exposed

HINGE Concealed Pin

FINISH White Powder Coat

INSULATION 1½ inch Fiberglass Duct Liner

MATERIALS



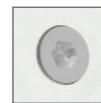
White
Powder Coat

FLANGES



1¼-inch Flange

LATCHES



Hex Cam Latch



Key Operated
Cam Lock



Mortise
Lock Prep



Pinned Hex
Cam Latch



Screwdriver
Cam Latch

ORDER GUIDE

BASE	LATCH	WIDTH	X	LENGTH	OPTIONS
HVAC			X		
	H Hex Head Cam	Standard Sizes			G Gasketing Installed
	L Key operated Cam Lock	30" x 48"	32" x 60"	34" x 66"	P Perforated Door
		30" x 54"	32" x 66"	34" x 72"	N Liner
	P Pinned Hex Cam Latch	30" x 60"	32" x 72"	36" x 48"	
		30" x 66"	34" x 48"	36" x 54"	
	M Mortise Lock (1-½") Prep	30" x 72"	34" x 54"	36" x 60"	
		32" x 48"	34" x 60"	36" x 66"	
	C Screwdriver Cam Latch	32" x 54"		36" x 72"	

Rough opening is door size + ¼ inch minimum.
Additional sizes available, call for more information.

UPDATED



Gasketed ACCESS DOOR

The Gasketed Access Door is an all purpose access door that reduces sound transmission and minimizes air filtration.

FEATURES

CUSTOM SIZES Custom sizes are available, from 6 inches by 6 inches to 48 inches by 48 inches.

OPTIONAL STAINLESS STEEL The spot-free design on the face of the door gives an aesthetically pleasing appearance

DETAILS

DOOR 16 gauge Steel

FRAME 16 gauge Steel

SIZE

- Min: 6 inches by 6 inches
- Max: 36 inches by 36 inches

INSTALLATION Ceiling or wall

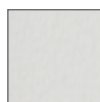
FLANGE 1 1/4 inch Exposed, Drywall Bead

HINGE Concealed Pin

GASKET EPDM

FINISH White Powder Coat (Steel) or #4 Satin (Stainless Steel)

MATERIALS



White
Powder Coat



#4 Satin
Stainless Steel

FLANGES



1 1/4-inch Flange



Drywall Bead

ORDER GUIDE

BASE	FLANGE	LATCH	WIDTH	X	LENGTH	OPTIONS
G				X		
	T 1 1/4 inch Flange W Drywall Bead	C Screwdriver Cam Latch L Key Cam Lock P Pinned Hex Cam Latch M Mortise Prep (1 1/8 inch) Prep H Hex Head Cam	Standard Sizes 6" x 6" 20" x 30" 8" x 8" 22" x 22" 10" x 10" 22" x 30" 12" x 12" 24" x 24" 12" x 18" 24" x 30" 12" x 24" 24" x 36" 14" x 14" 30" x 30" 16" x 16" 30" x 36" 18" x 18" 32" x 32" 18" x 24" 36" x 36"			B Galvannealed S Stainless Steel, Type 304

Rough opening is door size + 1/4 inch minimum.
Additional sizes available, call for more information.

LATCHES



Screwdriver
Cam Latch



Key Operated
Cam Lock



Mortise
Lock Prep



Pinned Hex
Cam Latch



Hex Cam Latch



DETAILS

DOOR Welded Aluminum, Drywall Infill

FRAME Welded Aluminum

SIZE

- Min: 8 inches by 8 inches
- Max: 40 inches by 40 inches

INSTALLATION Ceiling or Wall

LATCH Push Latch

HINGE Welded Pin

FINISH Mill

ORDER GUIDE

BASE	APPLICATION	WIDTH	X	LENGTH	OPTIONS	INFILL
RG			X			—
	B STB Pin Hinged	Standard Sizes (W x L)			C Screwdriver Cam Latch	500 ½ inch drywall
	BR Removable Door	8" x 8"	16" x 16"	24" x 24"	D Double Door	
	T Tile	12" x 12"	20" x 20"		L Key Operated Cam Lock	625 ¾ inch drywall

Drywall

ACCESS DOOR

The Drywall Access Door comes with standard ½ inch or ¾ inch drywall installed in the door pan. Available in five standard sizes and three door styles for various application requirements.

FEATURES

PUSH LATCHING DOOR Once installed, this door gives the desired appearance architects look for. The door quickly and easily opens and closes with the magnetic push-catch latch.

SAFETY CORD For overhead applications, this safety cord supports the door while opening the unit.

APPLICATION



STB Pin Hinge



Removable Door



Tile

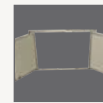
OPTIONS



Screwdriver Cam Latch



Key Operated Cam Lock



Double Door

Recessed

ACCESS DOOR

The non-rated Recessed Access Door provides access through openings in wall or ceiling surfaces. This door is designed to receive ½ inch drywall to match the surrounding surfaces.

DETAILS

DOOR 16 gauge Steel

FRAME 16 gauge Steel

SIZE

- Min: 6 inches by 6 inches
- Max: 24 inches by 36 inches

INSTALLATION Ceiling

FLANGE None, Drywall Bead or Plaster Bead

HINGE Concealed Pin

PAN DEPTH ⅝ inch

FINISH White Powder Coat or None



ORDER GUIDE

BASE	FLANGE	LATCH	WIDTH	X	LENGTH	OPTIONS
R				X		
	A No Flange W Drywall Bead P Plaster Bead	C Screwdriver Cam Latch L Key Operated Cam Lock M Mortise Lock (1 ½ inch) Prep	Standard Sizes (W x L) 8" x 8" 20" x 30" 12" x 12" 24" x 24" 16" x 16" 24" x 30" 18" x 18" 24" x 36"			B Galvannealed

Rough opening is door size + ¼ inch minimum. Additional sizes available, call for more information.
*Ceiling application only.

Concealed

DROP IN ACCESS DOOR

Designed for ceiling applications, the Concealed Drop-In Door provides a seamless, aesthetically pleasing alternative to a traditional steel access door. Finish ready for paint or texture, this access door helps keep the attention where it belongs...on your space.

FEATURES

REDUCED LABOR COSTS Lightweight reinforced gypsum panel allows for single trade installation.

CORNER OPTIONS Standard and custom sizes available in circular, radius and square profiles.

ECO FRIENDLY These panels contain a 70% post-consumer recycled glass content for a truly GREEN product.



DETAILS

DOOR Gypsum Fiber Reinforced

FRAME Gypsum Fiber Reinforced

DOOR SHAPE Radius Corner, Circular or Square Corner

SIZE

- Min: 6 inches by 6 inches
- Max: 48 inches by 48 inches

INSTALLATION Ceiling

FLANGE Drywall

FINISH Unfinished gypsum, Natural Gypsum White

ORDER GUIDE

BASE	DOOR SHAPE	WIDTH	X	LENGTH
GFR		—	X	
	C Circular	Standard Sizes (W x L) 8" x 8" 16" x 16" 24" x 24" 10" x 10" 18" x 18" 30" x 30" 12" x 12" 22" x 30"		
	R Radius Corner			
	S Square Corner			

*Rough opening is door size + 6 inches.
Additional sizes available, call for more information.*

FINISH



Natural Gypsum
White

DOOR SHAPE



Radius
Corner



Circular



Square
Corner



Concealed

HINGED ACCESS DOOR

Designed for both ceiling and wall applications, the Concealed Hinge Door panel can be used anywhere a locked door is required but style is still of utmost importance. The seamless design of these access doors blend into the surrounding drywall for a clean, upscale appearance.

FEATURES

ECO FRIENDLY These panels contain a 70% post-consumer recycled glass content for a truly GREEN product.

OPTIONAL LOCKS Constructed with European style hinges and choice of screwdriver cam latch or keyed cam lock.

CORNER OPTIONS Standard and custom sizes available in radius or square corners.

DETAILS

DOOR Gypsum Fiber Reinforced

FRAME Gypsum Fiber Reinforced

DOOR SHAPE Radius Corner or Square Corner

SIZE

- Min: 6 inches by 6 inches
- Max: 30 inches by 30 inches

INSTALLATION Wall or Ceiling

FLANGE Drywall

HINGE European

FINISH Unfinished Gypsum, Natural Gypsum White

ORDER GUIDE

BASE	DOOR SHAPE	LATCH	WIDTH	X	HEIGHT	APPLICATION
GFR			—	X		
	R Radius Corner S Square Corner	C Screwdriver Cam Latch L Keyed Cam Lock	Standard Sizes (in.) 8" x 8" 16" x 16" 24" x 24" 10" x 10" 18" x 18" 30" x 30" 12" x 12" 22" x 30"			C Ceiling Application W Wall Application

Rough opening is door size + 6 inches.

Additional sizes available, call for more information.

FINISH



Natural Gypsum White

DOOR SHAPE



Radius Corner



Square Corner

LATCHES



Screwdriver Cam Latch



Keyed Cam Lock

Insulated Fire-Rated ACCESS DOOR

Designed for wall and ceiling applications, this fire-rated Insulated Access Door is UL and Warnock-Hersey listed. Engineered with mineral fiber to assist in reducing heat transfer in the event of a fire.

FEATURES

FIRE-RATED Independently tested and labeled for 1 ½ hours for wall applications and 3 hours for ceiling applications.

EASY OPERATION This self-closing self latching door features an interior release for easy operation.

CUSTOM SIZING Custom sizes available from 6 inches by 6 inches to 48 inches by 48 inches.



DETAILS

DOOR 20 gauge Steel, Self-Closing, Self-Latching

FRAME 16 gauge Steel

SIZE

- Min: 6 inches by 6 inches
- IT Max: 24 inches by 72 inches or 48 inches by 48 inches
- IW/IP Max: 36 inches by 48 inches

INSTALLATION Ceiling or Wall

HINGE

- IT: Flush Continuous Piano
- IW/IP: Concealed Pin

FINISH White Powder Coat

INSULATION 2 inch Thick, Fire-Rated Mineral Fiber, R-8

CERTIFICATION

- UL listed "B" label for 1 ½ hours (Wall)
- Warnock-Hersey listed for 3 hours (Ceiling)

ORDER GUIDE

BASE	FLANGE	LATCH	WIDTH	X	LENGTH	OPTIONS
I				X		
	T 1 inch Flange W Drywall Bead P Plaster Bead	K Knurled Knob / Key Operated Latch Bolt M Mortise Lock (1 ½ inch) Prep	Standard Sizes (W x L) 8" x 8" 18" x 24" 24" x 48" 10" x 10" 20" x 30" 30" x 30" 12" x 12" 22" x 22" 32" x 32" 12" x 18" 22" x 30" 36" x 36" 12" x 24" 22" x 36" 36" x 48" 14" x 14" 24" x 24" 48" x 48" 16" x 16" 24" x 30" 18" x 18" 24" x 36"			B Galvannealed G Gasketing M Masonry Anchors S Stainless Steel, Type 304

Rough opening is door size + ¼ inch minimum. Additional sizes available, call for more information.
*Wall application only.

MATERIALS



White
Powder Coat

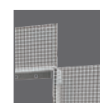
FLANGES



1 inch Flange



Drywall Bead



Plaster Bead

LATCHES



Knurled
Knob



Mortise
Lock Prep



ORDER GUIDE

BASE	FLANGE	LATCH	WIDTH	X	LENGTH	OPTIONS
U				X		
	T 1 inch flange W Drywall bead P Plaster Bead	K Knurled latch/ key operated latch bolt M Mortise lock (1 1/2 inch) prep D Detention lock prep	Standard Sizes (W x L) 8" x 8" 18" x 18" 24" x 30" 10" x 10" 18" x 24" 24" x 36" 12" x 12" 20" x 30" 24" x 48" 12" x 18" 22" x 22" 30" x 30" 12" x 24" 22" x 30" 32" x 32" 14" x 14" 22" x 36" 36" x 36" 16" x 16" 24" x 24" 36" x 48"			B Galvannealed G Gasketing M Masonry Anchors S Stainless Steel, Type 304

Rough opening is door size + 1/4 inch minimum. Additional sizes available, call for more information.

Uninsulated FIRE-RATED ACCESS DOOR

Nystrom UL Listed Uninsulated Access Door is designed for use in fire-rated walls while providing access to critical building components.

DETAILS

DOOR 14 gauge Steel, Self-Closing

FRAME 16 gauge Steel

SIZE

- Min: 6 inches by 6 inches
- UT Max: 24 inches by 72 inches or 48 inches by 48 inches
- UW/UP Max: 36 inches by 48 inches

INSTALLATION Wall

FLANGE Exposed, Drywall Bead or Plaster Bead

HINGE

- UT: Flush Continuous Piano
- UW/UP: Concealed Pin

FINISH White Powder Coat

CERTIFICATION UL listed "B" label for 1 1/2 hours



ORDER GUIDE

BASE	WIDTH	X	LENGTH	OPTIONS
FRD		X		
	Standard Sizes (W x L) 36" x 60" 40" x 60" 48" x 60"			C Ceiling Application D Double Door M Mortise Lock (1 1/2 inch) prep S Stainless Steel, Type 304 3HR 3-Hour Rated W Wall Application

Rough opening is door size. Additional sizes available, call for more information.

Oversized FIRE-RATED ACCESS DOOR

The Oversized Attic Access Door allows access into walls and ceilings when over-sized or double door applications are required. The double leaf design, with a removable center mullion, allows objects to clear which may interfere with door openings.

DETAILS

DOOR 14 gauge Steel

FRAME 16 gauge Steel

SIZE

- Min: 36 inches by 60 inches
- Max: 48 inches by 60 inches

INSTALLATION Ceiling or Wall

FLANGE Exposed

HINGE Continuous Rod or Piano

FINISH Off White Prime Coat

CERTIFICATION Warnock-Hersey listed for 2 hours

Tile Ready

FIRE-RATED ACCESS DOOR

The Tile Ready Access Door is UL Listed for openings that may require tile applications. When installed, the door and frame are concealed providing an aesthetically pleasing appearance.

DETAILS

DOOR 14 gauge Steel, Self-Closing

FRAME 16 gauge Steel

SIZE

- Min: 10 inches by 10 inches
- Max: 24 inches by 24 inches

INSTALLATION Wall

FLANGE Exposed or Drywall Bead

HINGE Cabinet Type

CERTIFICATION UL listed "B" label for 1 ½ hours



ORDER GUIDE

BASE	FLANGE	LATCH	WIDTH	X	LENGTH	OPTIONS
RU				X		
	T 1 inch Flange W Drywall Bead	K Knurled Knob/ Key Operated Latch Bolt M Mortise Lock (1 ½ inch) Prep	Standard Sizes (W x L) 10" x 10" 16" x 16" 24" x 24" 12" x 12" 18" x 18"			S Stainless Steel, Type 304 B Galvanneal

Rough opening is door size + ¼ inch minimum. Additional sizes available, call for more information.

Upward Opening

FIRE-RATED ACCESS DOOR

Nystrom fire-rated Upward Opening Access Door is designed for ceiling applications when the door must swing upward into a ceiling cavity.

DETAILS

DOOR

- IU: 20 gauge Steel
- FRU: 18 gauge Steel

FRAME

- IU: 16 gauge Steel
- FRU: 16 gauge Steel

SIZE

- IU Min: 12 inches by 12 inches
- IU Max: 24 inches by 36 inches
- FRU Min: 24 inches by 36 inches
- FRU Max: 40 inches by 70 inches

INSTALLATION Ceiling

FLANGE Exposed

HINGE Flush Continuous Piano Hinge

FINISH Off White Prime Coat

INSULATION 2 inch Thick, Fire-Rated Mineral Fiber, R-8

CERTIFICATION Warnock-Hersey listed for 1 hour



ORDER GUIDE

BASE	LATCH	WIDTH	X	LENGTH	OPTIONS
			X		
IU Sizes <24" x 36" FRU Sizes >24" x 36"	A Allen Head Key M Mortise Lock (1 ½ inch) Prep	Standard Sizes (W x L) IU 12" x 12" 14" x 14" 18" x 18" FRU 24" x 48" 30" x 30" 30" x 36"			B Galvanneal G Gasketing S Stainless Steel, Type 304

Rough opening is door size + ¼ inch minimum.

Additional sizes available, call for more information.

Use IUA for access doors 24" x 36" or smaller; FRU for larger doors.



Fire-Rated Security

ACCESS DOOR

The insulated Fire-Rated Security Access Door is constructed of heavy-duty materials to prevent unwanted access through openings in fire-rated walls.

FEATURES

FIRE-RATED Independently tested and labeled for 1 ½ hours for wall applications.

SELF-CLOSING This door is designed with a spring for secure self-closing wall applications.

CUSTOM SIZES Custom sizes are available, from 12 inches by 12 inches to 48 inches by 48 inches.

DETAILS

DOOR

- Outer Door: 14 gauge Steel
- Inner Door: 20 gauge Steel

FRAME 16 gauge Steel

SIZE

- Min: 12 inches by 12 inches
- ST Max: 24 inches by 72 inches or 48 inches by 48 inches
- SW/SP Max: 36 inches by 48 inches

INSTALLATION Wall

FLANGE Exposed, Drywall Bead or Plaster Bead

HINGE

- ST: Flush Continuous Piano
- SW/SP: Concealed Pin

FINISH White Powder Coat

INSULATION 2 inch thick Fire-Rated Mineral Wool

CERTIFICATION UL listed "B" label for 1 ½ hours

ORDER GUIDE

BASE	FLANGE	LATCH	WIDTH	X	LENGTH	OPTIONS
S				X		
	T 1 inch Flange	D Detention Lock Prep for an extended bolt option	Standard Sizes (W x L)			B Galvannealed
	W Drywall Bead		12" x 12"	22" x 30"	24" x 40"	G Gasketing
	P Plaster Bead	K Knurled Latch/Key Operated Latch Bolt	16" x 16"	24" x 24"	24" x 48"	M Masonry Anchors
		M Mortise Lock (1 ½ inch) Prep	18" x 18"	24" x 36"		S Stainless Steel, Type 304

Rough opening is door size + ¼ inch minimum. Additional sizes available, call for more information.

MATERIALS



White
Powder Coat

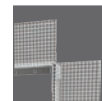
FLANGES



1 inch Flange



Drywall Bead



Plaster Bead

LATCHES



Knurled
Knob



Mortise
Lock Prep



Detention
Lock Prep

Medium Security

ACCESS DOOR

The Medium Security Access Door is manufactured with heavy-duty materials to prevent unwanted access to critical building components.



DETAILS

DOOR 12 gauge Steel

FRAME 12 gauge Steel

SIZE

- Min: 8 inches by 8 inches
- Max: 36 inches by 48 inches

INSTALLATION Wall or Ceiling

FLANGE 1" Exposed, Drywall Bead or Plaster Bead

HINGE Concealed Continuous Piano

FINISH White Powder Coat

ORDER GUIDE

BASE	FLANGE	LATCH	WIDTH	X	LENGTH	OPTIONS
M				X		
	T 1 inch Flange W Drywall Bead P Plaster Bead	D Detention Lock Prep K Kurler Knob/Key Operated Latch Bolt M Mortise Lock (1 1/2 inch) Prep P Pinned Hex Cam	Standard Sizes (W x L) 8" x 8" 18" x 18" 24" x 30" 10" x 10" 18" x 24" 24" x 36" 12" x 12" 20" x 30" 24" x 48" 12" x 18" 22" x 22" 30" x 30" 12" x 24" 22" x 30" 32" x 32" 14" x 14" 22" x 36" 36" x 36" 16" x 16" 24" x 24" 36" x 48"			G Gasketing M Masonry Anchors S Stainless Steel, Type 304

Rough opening is door size + 3/8 inch minimum. Additional sizes available, call for more information.

High Security

ACCESS DOOR

The High Security Access Door provides secure access and is manufactured with detention-grade materials. This panel is engineered with heavy-duty butt hinges on the face of the door to prevent unwanted access.



DETAILS

DOOR 10 gauge Steel

FRAME 3/16 inch Steel Angle - 2 inches by 2 inches

SIZE

- Min: 8 inches by 8 inches
- Max: 48 inches by 54 inches

INSTALLATION Wall or Ceiling

FLANGE 2" Exposed

HINGE Surface Mounted Heavy-Duty Butt

FINISH White Powder Coat

ORDER GUIDE

BASE	LATCH	WIDTH	X	LENGTH	OPTIONS
HS			X		
	D Detention Lock Prep M Mortise Lock (1 1/2 inch) Prep S Security Screws	Standard Sizes (W x L) 12" x 12" 22" x 30" 24" x 40" 16" x 16" 24" x 24" 24" x 48" 18" x 18" 24" x 36"			S Stainless Steel, Type 304 Z Continuous Concealed Hinge

Rough opening is door size + 1/4 inch. Additional sizes available, call for more information.

*Recommended for Wall surfaces only.

All doors come standard with Security Screws.



Top Security

ACCESS DOOR

Nystrom Top Security Access Door is manufactured with detention-grade materials and provides access through openings in walls. The pan style access door includes a heavy-duty butt hinge welded on the surface of the door to prevent unwanted access.

ORDER GUIDE

BASE	LATCH	WIDTH	X	LENGTH	OPTIONS
TS			X		
	D Detention Lock Prep M Mortise Lock (1 1/8 inch) Prep	Standard Sizes (W x L) 12" x 12" 22" x 30" 24" x 40" 16" x 16" 24" x 24" 24" x 48" 18" x 18" 24" x 36"			G Gasketing M Masonry Anchors S Stainless Steel, Type 304

Rough opening is door size + 3/4 inch minimum.
 Additional sizes available, call for more information.
 *Recommended for Wall surfaces only.

DETAILS

DOOR 7 Gauge formed steel door

FRAME 3/16 inch steel angle - 2 inches by 3 inches

SIZE

- Min: 8 inches by 8 inches
- Max: 48 inches by 54 inches

INSTALLATION Ceiling or Wall

FLANGE 2" Exposed

HINGE Surface Mounted Heavy-Duty Butt

PAN DEPTH 1 1/4 inch

FINISH White Powder Coat



Draft Stop

ACCESS DOOR

Nystrom Draft Stop Door is a non-rated access door designed to provide access through wall openings of draft stop spaces in the attic while preventing a back draft from one section of the attic to another. This self-closing and self-latching access door allows for access from both sides of the door.

ORDER GUIDE

BASE	FLANGE	LATCH	WIDTH	X	LENGTH	OPTIONS
D				X		
	T 1 inch Flange W Drywall Bead	K Knurled Knob/Key Operated Latch Bolt M Mortise Lock (1 1/8 inch) Prep	Standard Sizes (W x L) 12" x 12" 22" x 30" 24" x 40" 16" x 16" 24" x 24" 24" x 48" 18" x 18" 24" x 36"			B Galvannealed G Gasketing S Stainless Steel, Type 304

Rough opening is door size + 1/4 inch. Additional sizes available, call for more information.
 *Recommended for Wall surfaces only.

DETAILS

DOOR 14 gauge Steel (self-closing)

FRAME 16 gauge Steel

SIZE

- Min: 6 inches by 6 inches
- DT Max: 24 inches by 72 inches, 36 inches by 60 inches or 48 inches by 48 inches
- DW Max: 36 inches by 48 inches

INSTALLATION Wall

FLANGE Exposed or Drywall Bead

HINGE

- DT: Flush Continuous Piano
- DW: Concealed Pin

FINISH White Powder Coat

Exterior

ACCESS DOOR

The Exterior Access Door provides efficient access on the exterior of your building without compromising security or weather resistance.

FEATURES

COMPATIBLE WITH BUILDING KEY With the mortise lock prep option, you can match the mortise keying to that of your building's other access points.

TEMPERATURE CONTROL With 1.6 inch polyurethane insulation, the Nystrom Exterior Door is constructed to protect your building from the harshest climates.

AIR + WATER PENETRATION TEST Independent lab testing for air leakage per ASTM E 283 and water leakage per ASTM E 331-00 assures the best protection against the elements.



DETAILS

DOOR 24 gauge Steel

FRAME 0.080 inch 6063-T5 Extruded Aluminum

SIZE

- Min: 12 inches by 12 inches
- Max: 48 inches by 60 inches

INSTALLATION Ceiling or Wall

FLANGE Exposed or Plaster/Stucco Bead

HINGE Stainless Steel Continuous Piano

FINISH

- Door: Paint Grip Finish
- Frame: Mill

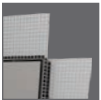
INSULATION 1.6 inch Polyurethane; R-11

GASKETING EPDM Self-Adhesive, Continuous

FLANGES



1 inch
Flange



Plaster/Stucco
Bead

LATCHES



Non-Locking
Handle



Screwdriver
Cam Latch



Locking
Handle



Mortise
Lock Prep

ORDER GUIDE

BASE	FLANGE	LATCH	WIDTH	X	LENGTH	OPTIONS
X				X		
	T 1 inch Flange	A Non-Locking Handle	Standard Sizes (W x L) 12" x 12" 20" x 30" 24" x 36" 16" x 16" 24" x 24" 36" x 36" 18" x 18" 24" x 30"			A Aluminum Door
	P Plaster/Stucco bead	C Screwdriver Cam Latch				C Drip Cap
		L Locking Handle				P Padlock Hasp
		M Mortise Lock (1 1/2 inch) Prep				S Stainless Steel, Type 304

Rough opening is door size. Additional sizes available, call for more information.

Coastal Zone

EXTERIOR ACCESS DOOR

Nystrom Coastal Zone Exterior Access Door is the industry's only high velocity and impact tested door. With a design pressure of +/- 80psf, this door is sure to withstand mother nature's toughest storms.

FEATURES

IMPACT, AIR + WIND PRESSURE TESTED Independent lab tested to TAS 201, 202 and 203 assures the best protection against the harshest elements.

TEMPERATURE CONTROL With 1.6 inches of closed cell polyurethane insulation, the Coastal Zone Exterior Door delivers a R-11 thermal value.

CUSTOM SIZES Available in 1/4 inch increments from 18 inches by 18 inches to 36 inches by 48 inches maximum.



DETAILS

DOOR 24 gauge Steel

FRAME 0.080 inch 6063-T5 Extruded Aluminum

SIZE

- Min: 18 inches by 18 inches
- Max: 36 inches by 48 inches

INSTALLATION Wall

FLANGE Exposed

HINGE Stainless Steel Continuous Piano

FINISH

- Door: Paint Grip Finish
- Frame: Mill

INSULATION 1.6 inch Polyurethane; R-11

GASKETING EPDM Self-Adhesive, Continuous

COMPLIANCE Florida Product Approval FL38739

FLANGES



1 inch
Flange

LATCHES



Non-Locking
Handle



Locking
Handle

ORDER GUIDE

BASE	LATCH	WIDTH	X	LENGTH	OPTIONS
XT-H			X		- H
	A Non-Locking Handle	Standard Sizes (W x L)			C Drip cap
	L Locking Handle				S Stainless Steel, Type 304
				18" x 18"	24" x 30"
				20" x 30"	24" x 36"
				24" x 24"	36" x 36"

Rough opening is door size. Additional sizes available, call for more information.

Lightweight

ACCESS DOOR

Nystrom non-rated insulated Lightweight Access Door offers a solution to larger openings in wall and ceiling applications. The door is available in pre-finished, embossed, galvanized steel and aluminum door skins.

DETAILS

DOOR 26 gauge Steel, Embossed

FRAME .045 inch 6063-T5 Extruded Aluminum

SIZE

- Min: 12 inches by 12 inches
- Max: 18 inches by 72 inches, 24 inches by 60 inches or 48 inches by 48 inches

INSTALLATION Ceiling or Wall

FLANGE Rolled 1 5/16 inches Wide

HINGE Aluminum Continuous Piano

FINISH

- Door Skin: Steel, White Embossed
- Frame: Aluminum, Clear Anodized

INSULATION 3/4 inch Polystyrene, R-3.8



ORDER GUIDE

BASE	LATCH	WIDTH	X	LENGTH	OPTIONS
LW			X		
	L Key Operated Cam Lock	Standard Sizes (W x L)			A Aluminum Panel Insert
	T Screwdriver Cam Latch	12" x 12"	24" x 24"	30" x 36"	G Gasketing
		18" x 18"	24" x 36"	48" x 48"	
		22" x 30"	24" x 48"	60" x 48"	
		22" x 36"	30" x 30"	72" x 48"	

Rough opening is door size + 1/4 inch minimum. Additional sizes available, call for more information.
*Double door construction.

Plastic

ACCESS DOOR

The Plastic Access Door provides an economical alternative to traditional materials and is ideal for light-duty applications. The removable panel is easily installed - no fasteners required.

DETAILS

DOOR 1/8 inch High Impact Styrene, Removable

FRAME Reversible 3/4 inch Flange

SIZE

- Min: 4 inches by 6 inches
- Max: 22 inches by 22 inches

INSTALLATION Ceiling or Wall

FLANGE Exposed

LATCH Snap Latch

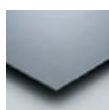
FINISH White, Texturized



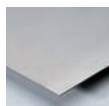
ORDER GUIDE

BASE	WIDTH	X	LENGTH
PL		X	
	Standard Sizes (W x L)		
	4" x 6"	14" x 14"	
	6" x 9"	14" x 29"	
	8" x 8"	22" x 22"	
	12" x 12"		

Materials



- B** Galvanized Steel
With primer coat. Use where corrosive resistance is required.



- S** Stainless Steel, Type 304
Extremely resistant to corrosion. With #4 satin polish finish.

Additional



- D** Double Leaf Panel
Recommended for easy access to large openings.



- C** Drip Cap
Directs running water away from the face of the panel.



- G** Gasketing
Applied to the doorstops for weather resistance. Also available with UL listed smoke seal.

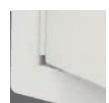


- L** Louvered Door
Provides ventilation for special applications.



- M** Masonry Anchors
Attached to the frame to secure the panel when installed in masonry.

Hinges



Continuous Piano H



Concealed Continuous Piano Z

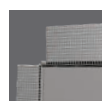
Flanges



1 inch Flange



Drywall Bead

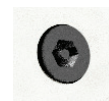


Stucco or Plaster Bead

Latches + Locks



- C** Screwdriver Operated Cam Latch
Most common. Appropriate for standard applications.



- S** Security Screw
Highest security without a lock – requires special pinned allen wrench to open the panel.



- N** Knurled Knob Cam Latch
Unrestricted access – no tool required. Finger operated.



- K** Knurled Knob/Key Operated Latch Bolt
Patented ball bearing latch bolt operated by a screw-in type knurled knob or flush key.



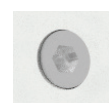
- D** Detention Lock Preparation
For heavy-duty detention deadbolt lock. Used in maximum security applications.



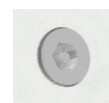
- L** Key Operated Cam Lock
Provides an economical solution for controlled access when locks are required.



- M** Mortise Cylinder Lock Preparation
Matches project hardware. Accepts standard 1 1/8 inch mortise cylinder.



- H** Hex Head Cam
Common, requires an allen wrench to open panel.



- P** Pinned Hex Head Cam
Highest security without a lock – requires special pinned allen wrench to open the panel.

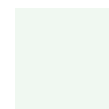
Finishes



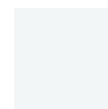
White (Standard)



ANSI 70 Gray FP1



Traffic White FP43



High Reflectance White FP44

Note: White is the base color, all other colors have additional charges and may require longer lead times.

This color chart is for reference only and is not to be used for final color / material matching. Nystrom is not responsible or liable for color matches made with this chart.

Visit nystrom.com for the latest version of
this document and more information.



9300 73rd Avenue North
Minneapolis, MN 55428

Phone (800) 547-2635
Fax (866) 900-1959

info@nystrom.com



nystrom.com