

FRONT ELEVATION

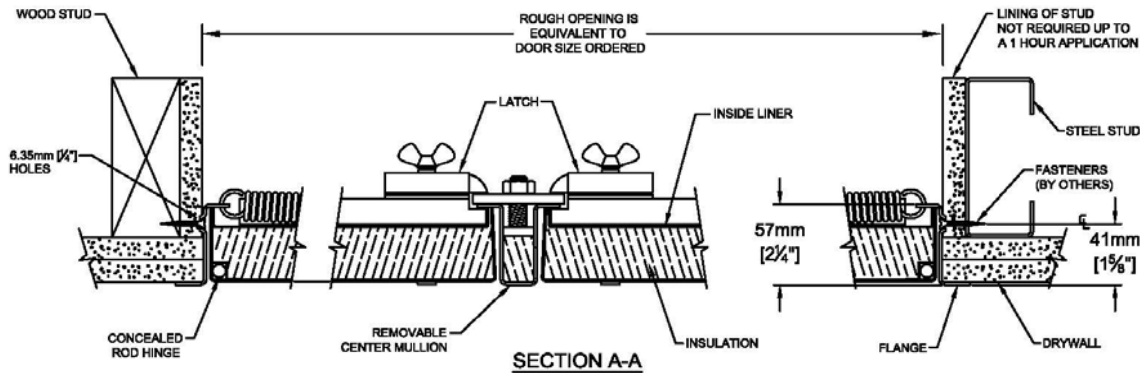
STANDARD CONSTRUCTION:

- MATERIAL** - SATIN FINISH GALVANIZED (GALVANNEALED) STEEL.
- PANEL** - 1.31mm [18 ga.], SELF CLOSING.
- LINER** - 0.85mm [22ga.]
- FRAME** - 1.61mm [16 ga.] UP TO AND INCLUDING 762mm x 1219mm [30" x 48"]. LARGER SIZES 1.99mm [14ga.]
- FLANGE** - EXTERIOR FLANGE WIDTH 22mm [$\frac{7}{8}$ "] UP TO AND INCLUDING 914mm x 914mm [36" x 36"]. LARGER SIZES 32mm [1 $\frac{1}{4}$ "].
- HINGE** - CONTINUOUS ROD HINGE. PIANO HINGE STANDARD ON PANELS EXCEEDING 1219mm [48"] IN A WALL POSITION.
- LATCH** - $\frac{1}{2}$ " ALLEN KEY, WITH INTERIOR RELEASE.
- INSULATION** - 38mm [1 $\frac{1}{2}$ "] HIGH TEMPERATURE.
- FINISH** - RUST INHIBITIVE PRIME COAT (OFF-WHITE).



FRD D wall and ceiling fire-rated panels are manufactured under the factory inspection service of Intertek (Warnock Hersey) and have a label reading: "Listed access frame and insulated fire door assembly 2 hour fire rating. Vertical and Horizontal Installation."

Temperature rise maximum 139°C/ 250°F at 30 minutes, 250°C/450°F at 60 minutes.



SECTION A-A

PROJECT:					
ARCHITECT:					
CONTRACTOR:					
QTY:					
PART#:					
<p>9300 73rd Avenue North, Minneapolis, MN 55428</p>				TITLE:	
NAME	DATE	SIZE	DWG. NO.		REV
DRAWN		A			-
RELEASED					SHEET 1

OPTIONS: * - DENOTES ADDITIONAL COST.

- * ☐ - OPTIONAL MATERIAL - 304 STAINLESS STEEL WITH A NO. 4 POLISHED FINISH ON THE EXTERIOR SURFACE, c/w CONTINUOUS PIANO HINGE.
- * ☐ - CONTINUOUS PIANO HINGE. (ON PANEL LESS THAN 1219mm [48"].)
- ☐ - ALLEN KEY.
- ☐ - RAISED KNURLED KNOB.
- * ☐ - NON-LOCKING HANDLE.
- * ☐ - 1½" MORTISE PREP ONLY.
- * ☐ - 1½" MORTISE PREP COMPLETE WITH MORTISE CYLINDER.

STANDARD SIZES

Double leaf construction for walls and ceilings.

Qty	Rough Opening Size W x H		No. of Latches/Locks	Weight In kgs.	Weight In lbs.
	Metric (mm)	Inches			
	1524 x 610	60 x 24	2	35.38	78.00
	1524 x 762	60 x 30	2	40.82	90.00
	914 x 1219	36 x 48	2	38.55	85.00
	1219 x 914	48 x 36	2	38.10	84.00
	1524 x 914	60 x 36	4	47.62	105.00
	1016 x 1016	40 x 40	2	35.83	79.00
	1016 x 1219	40 x 48	4	42.18	93.00
	1067 x 1067	42 x 42	4	39.09	86.00
	1219 x 1016	48 x 40	4	42.63	94.00
	1524 x 1016	60 x 40	4	51.71	114.00
	1219 x 1219	48 x 48	4	48.53	107.00
	1524 x 1219	60 x 48	4	61.23	135.00


STANDARD SIZES

Double leaf construction for walls only.

Qty	Rough Opening Size W x H		No. of Latches/Locks	Weight In kgs.	Weight In lbs.
	Metric (mm)	Inches			
	610 x 1524	24 x 60	4	33.58	74.00
	914 x 1524	36 x 60	4	50.34	111.00
	1016 x 1524	40 x 60	4	54.43	120.00
	1219 x 1524	48 x 60	4	63.50	140.00

Hinge Side

Net Opening = Width minus 153mm [6"]
Height minus 39mm [1½"]

PART#:				TITLE:	
 9300 73rd Avenue North, Minneapolis, MN 55428				DWG. NO.	
NAME	DATE	SIZE			
DRAWN		A			
RELEASED			SHEET 2		