

FRONT ELEVATION  
NOT TO SCALE

## LISTINGS

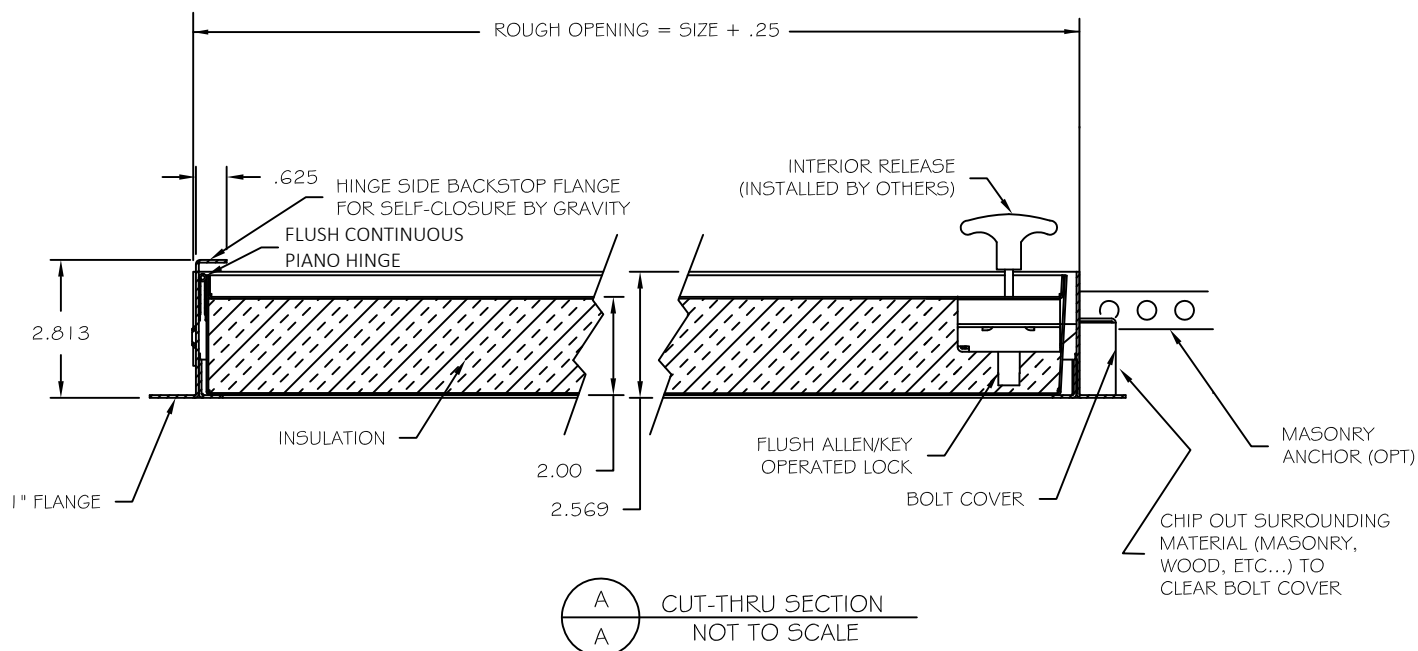


## SPECIFICATIONS

- 16 GAUGE (1.520mm) COLD ROLLED STEEL FRAME
- 20 GAUGE (.912mm) COLD ROLLED STEEL DOOR
- 2" THICK FIRE RATED INSULATION, 8 R VALUE
- 1" WIDE EXPOSED FLANGE
- WHITE BAKED ON POWDER COAT FINISH
- CONCEALED CONTINUOUS PIANO HINGE
- FRAMES PROVIDED WITH .25" (6.25mm) MOUNTING HOLES
- FLUSH ALLEN/KEY OPERATED LOCK
- INTERIOR RELEASE MECHANISM, FURNISHED BY FACTORY, INSTALLED BY OTHERS
- BACKSTOP FLANGE FOR SELF-CLOSURE BY GRAVITY

## OPTIONS

- GALVANIZED BONDERIZED STEEL
- STAINLESS STEEL WITH #4 SATIN POLISH FINISH
- STAINLESS STEEL CONTINUOUS PIANO HINGE WITH STAINLESS STEEL PIN (AVAILABLE ON STAINLESS STEEL PANELS ONLY)
- PREPARATION FOR 1.125" MORTISE CYLINDER (CYLINDER PROVIDED BY OTHERS OR BY FACTORY)



CUT-THRU SECTION  
NOT TO SCALE



9300 73RD AVENUE NORTH  
MINNEAPOLIS, MN 55428

PH. (800) 547-2635  
WWW.NYSTROM.COM

#### Standard Features:

Door: 20 gauge (.912mm thick) cold rolled steel  
Frame: 16 gauge (1.52mm thick) cold rolled steel with 1" Flange  
Hinge: Concealed continuous piano hinge  
Latch: Allen/Key operated latch bolt  
Optional: Mortise cylinder preparation (cylinder provided by factory or by others)  
\*One additional Allen/Key operated latch bolt standard on all panels greater than 32" in height.  
Finish: White baked on powder coat  
Optional: galvanized bonderized or stainless steel with #4 satin polish finish  
Insulation: 2" thickness fire rated mineral fiber, 8 R value  
Other: Interior release mechanism, furnished by factory installed by others.  
Self-closing by gravity

---

#### Specifications:

Frame shall be 16 gauge cold rolled steel with 1" flange. Door shall be fabricated from 20 gauge cold rolled steel, insulated sandwich type construction. Door shall be self-latching with self-closure by gravity and interior latch release mechanism to be furnished by factory and installed by others. Hinge shall be a concealed continuous piano hinge. Latch(es) shall be allen/key operated latch bolt (optional: preparation to receive 1 1/8" mortise cylinder - cylinder provided by factory or others). \*One additional allen/key operated latch bolt standard on all panels greater than 32" in height. This assembly shall carry a 3 hour Warnock Hersey label for ceilings rated 3 hours or less. Finish shall be white baked on powder coat (optional: galvanized bonderized steel or stainless steel with #4 satin polish finish).

Installation shall be in accordance with manufacturers instructions. Manufacturer shall guarantee against defects in material and workmanship for a period of one year.

---

#### Standard Sizes:

Std Sizes (in)	Std Sizes (mm)	Weight/Latches	Std Sizes (in)	Std Sizes (mm)	Weight/Latches
12x12	305x305	17/1	22x30	559x762	32/1
14x14	356x356	16/1	22x36	559x914	39/2
16x16	406x406	18/1	24x24	610x610	29/1
18x18	457x457	20/1	24x30	610x762	36/1
22x22	559x559	27/1	24x36	610x914	40/2

All units are hinged on the second dimension (height). Rough opening is door size plus 1/4".