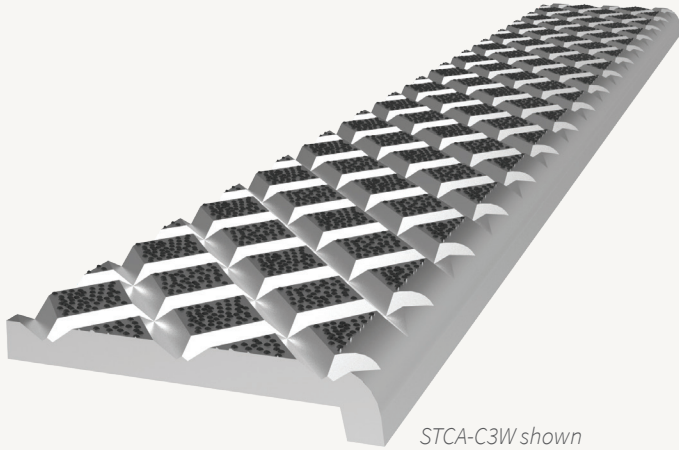


Cast

STAIR TREAD + NOSING



Cast Stair Treads are made from type 319 aluminum with a perfect sand cast finish. Ideal for heavy traffic areas such as schools, public buildings and subways, these stair treads are built to last.

FEATURES

HIGHLY DURABLE These treads will take a beating and keep performing; designed to be impact resistant with anti-slip grit and are barrier free.

ANTI-SLIP SAFETY TREADS Reduce slip hazards with ADA and OSHA compliant abrasive stair treads. The cross hatch treads with abrasive grit provides a high level of slip resistance.

DETAILS

MATERIALS Aluminum

APPLICATION Poured Concrete or Steel Pan

TREAD Cross Hatch with Abrasive Grit

WIDTH 3 inches

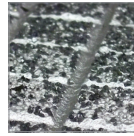
MOUNTING Wing Anchor Installed or Shipped Loose with Drilled Holes

NOSING Short

OPTIONS Painted Undersides or Taped Tops

CODE COMPLIANCE 2010 ADA 504, 2015 IBC/ICC Section 1029.13.2, 2018 IBC/ICC Section 1029.14.2 and 2016 California Building Code Section 11B-504.5

MATERIAL



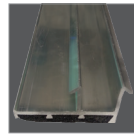
Cast Aluminum

NOSING

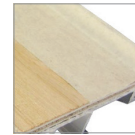


Short

OPTIONS



Painted Undersides



Taped Tops

ORDER GUIDE

MODELS	WIDTH	MATERIAL	INSTALL	STAIR TYPE
STCA-C3W	3"	Aluminum	Anchor, Mechanically Fastened	Poured Concrete
STCA-C3C	3"	Aluminum	Anchor in Place	Poured Concrete
STCA-P3W	3"	Aluminum	Anchor, Mechanically Fastened	Steel Pan
STCA-P3C	3"	Aluminum	Anchor in Place	Steel Pan