

Drainable

FLOOR DOOR, H20

The H20 Drainable Floor Door is designed for infrequent, off street traffic in exterior or high moisture areas when liquid flow into the door is a concern. The frame is constructed with a gutter channel for water runoff into a drainage system.



FEATURES

VEHICLE LOAD Designed for exterior/wet environments and tested for H20 wheel load for infrequent, off-street traffic.

DRAINABLE FRAME Constructed with a gutter channel frame and drain hole for liquid removal.

DETAILS

LOAD H20 wheel load

MATERIAL

- Aluminum: 1/4 inch, mill finish, gray primer on exterior frame (for cast-in only)
- Steel: 3/16 inch, gray primer
- Stainless Steel: 3/16 inch, Type 304 or Type 316, bead blasted

COVER Diamond tread plate

FRAME Drainable gutter frame with integral 1 inch anchor flange, EPDM gasket and 1-1/2 inch drain coupling

INSTALLATION Cast-In

SPRING Enclosed coil, Type 17-7 Stainless Steel

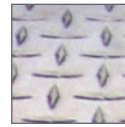
HINGES Heavy duty Type 316 Stainless Steel

HOLD OPEN ARM Type 316 Stainless Steel automatic hold open arm locks cover in open position

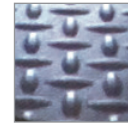
LATCH Slam latch Type 316 Stainless Steel with inside lever handle, includes removable threaded plug and key

OPTIONS Padlock Hasps, Locks, Finishes, Safety Grates, Safety Nets, Safety Rails, Skirting

MATERIALS



Aluminum

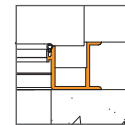


Primed Steel

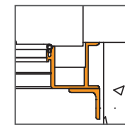


Stainless Steel

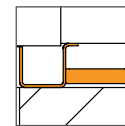
FRAME



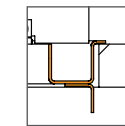
Gutter Frame
Cast-in Aluminum



Gutter Frame
Bolt-in Aluminum



Gutter Frame
Cast-in Steel or
Stainless Steel



Gutter Frame
Bolt-in Steel or
Stainless Steel

ORDER GUIDE

MODEL	MATERIAL	WIDTH	X	LENGTH	COVER	INSTALL
FDDH			X			—
	A 1/4" Aluminum	Standard Sizes (W x L)		S Single Door	FL Aluminum	
	P 3/16" Steel	Single Door	Double Door	D Double Door	WL Steel or Stainless Steel	
	S 3/16" Stainless Steel, Type 304	24" x 24"	48" x 48"			
	V 3/16" Stainless Steel, Type 316	30" x 36"	48" x 72"			
		36" x 36"	60" x 60"			
		42" x 42"				

Additional sizes available, call for more information.