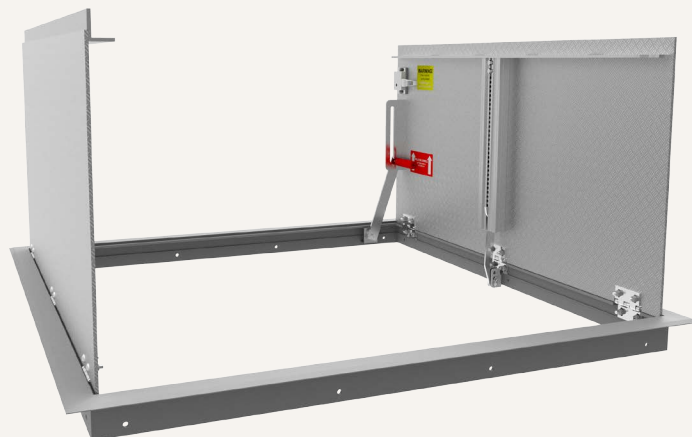


Existing Opening

FLOOR DOOR, 300PSF

The Existing Opening Floor Door is designed for retrofit applications and is constructed with an angle frame. While providing a quality, economical option this is ideal for areas where water or moisture intrusion is not a concern.



FEATURES

PEDESTRIAN LOAD Designed for standard duty loads and tested up to 300psf live load in interior areas.

MATERIAL OPTIONS Upgrade the material to steel for added strength and durability or stainless steel for areas where corrosion is a concern.

DETAILS

LOAD 300 psf live load

MATERIAL

- Aluminum: 1/4 inch, mill finish
- Steel: 3/16 inch, gray primer
- Stainless Steel: 3/16 inch, Type 304 or Type 316, bead blasted

COVER Diamond tread plate

FRAME Angle

INSTALLATION Bolt-in

SPRING Enclosed coil, Type 17-7 Stainless Steel

HINGES Heavy-duty Type 316 Stainless Steel

HOLD OPEN ARM Type 316 Stainless Steel, automatic, hold open arm locks cover in open position

LATCH Slam latch, Type 316 Stainless Steel, with inside lever handle and key

GASKET EPDM gasket (*aluminum only*)

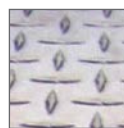
OPTIONS Padlock Hasps, Locks, Finishes, Gasket, Safety Grates, Safety Nets, Safety Rails, Skirting

ORDER GUIDE

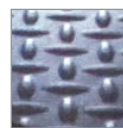
MODEL	MATERIAL	WIDTH	X	LENGTH	COVER
FDEP			X		DL
	A 1/4" Aluminum	Standard Sizes (W x L)			S Single Door
	P 3/16" Steel	Single Leaf	Double Leaf		D Double Door
	S 3/16" Stainless Steel, Type 304	24" x 24"	48" x 48"		
	V 3/16" Stainless Steel, Type 316	30" x 36"	48" x 72"		
		36" x 36"	60" x 60"		
		42" x 42"			

Additional sizes available, call for more information.

MATERIALS



Aluminum

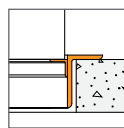


Primed Steel

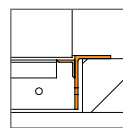


Stainless Steel

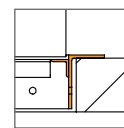
FRAME



Angle Frame
Bolt-in
Aluminum



Angle Frame
Bolt-in
Steel



Angle Frame
Bolt-in
Stainless Steel