



Direct Service Done Right



07 9513 + 07 9516

Expansion Joint Systems
Catalog

DIV
5

STAIR TREADS + NOSINGS
05 5000



FALL PROTECTION
05 5213 / 07 7200



Since 1948 Nystrom has been the go-to manufacturer for specialty building products.

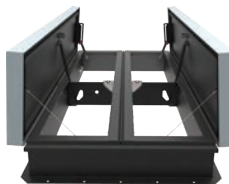
Today we provide a wide range of floor, roof and safety related access products that help create safer, more accessible buildings.

DIV
7

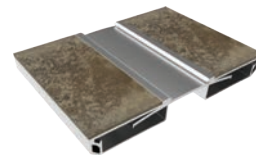
ROOF HATCHES
07 7200



SMOKE VENTS
07 7200



**PREFORMED JOINT SEALS +
EXPANSION JOINT SYSTEMS**
07 9100 + 07 9513



DIV
8

ACCESS DOORS + PANELS
08 3100



FLOOR DOORS + HATCHES
08 3483



DIV
10

**LUMINOUS EGRESS
PRODUCTS**
10 1443



**FIRE PROTECTION CABINET
+ FIRE EXTINGUISHERS**
10 4413 + 10 4416



**ENTRANCE MATS + FRAMES
ENTRANCE FLOOR GRILLES**
12 4813 + 12 4816



DIV
12



Expansion Joint Systems

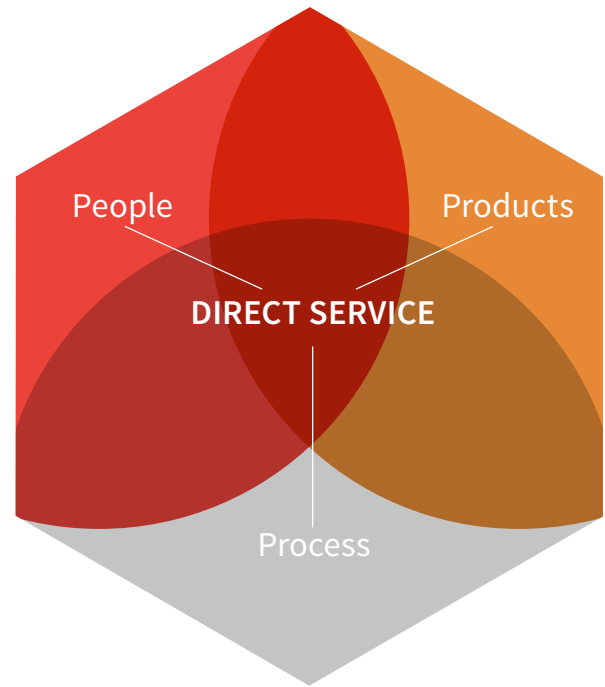
Nystrom expansion joints are manufactured to solve a variety of expansion joint scenarios. Custom sizing, materials, and color finishes ensure that whatever you need for your project, we’ve got you covered. Our commercial building products are shipped direct from our central manufacturing facility or from one of our strategically located stocking locations, Nystrom delivers the expansion joints you need.

FLOOR SYSTEMS	5-19	Options	39
Architectural Metals	5-14	Material	39
Elastomeric Seals	15-19	Seal Colors	39
WALL & CEILING SYSTEMS	20-29	Moisture Barrier	39
Elastomeric Seals	20-26	Expansion Joint	
Architectural Metals	27-29	Compression Seals	40
PARKING DECK SYSTEMS	30-33		
Architectural Metals	30-33		
ROOF SYSTEMS	33-37		
Bellows	33-35		
Architectural Metals	36-38		

Direct Service Done Right

Nystrom offers a broad line of specialty building products to better serve construction professionals and architects.

We have customer focused professionals and hassle-free processes that directly serve and simplify the building process.



PEOPLE

architects, engineers, designers, estimators, construction professionals, and service specialists

PROCESS

estimating & bid design support, tech support, logistics support, installation support, cad, revit/bim

PRODUCTS

standard & custom designs, warehousing, quality assurance, exceptional warranties, leed certification, labeling & tagging

TIME

EFFICIENCY

SERVICE



SPECIFICATION SUPPORT

By giving architects, designers and contractors open access to our expert team, we simplify the process of specifying and procuring access products from design through delivery and installation.

Aluminum Flooring System

SURFACE APPLICATION (DT/DTw)

BENEFITS

- ADA COMPLIANT** Beveled edges provide a smooth, ADA-compliant transition.
- EASY INSTALLATION** Surface mount – no block out required. Simply attach to substrate with appropriate fasteners.

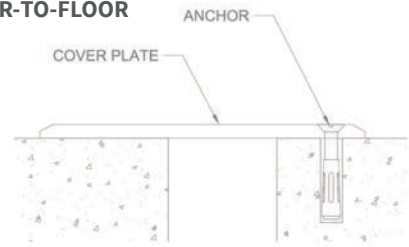


DETAILS

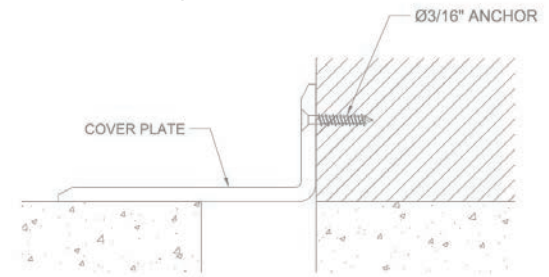
- MATERIAL** 6061-T6 and 5052 Aluminum, Meets ASTM B221 and ASTM B209
- FINISH** Mill
- MOVEMENT** Thermal: Horizontal
- MOUNTING** Surface
- JOINT SIZE** 1 inch to 6 inches
- LENGTH** 10 Linear Feet
- LOAD** Pedestrian and Light Cart
- INSTALLATION** Floor
- OPTIONS** Moisture Barrier, Fire Barrier, Additional material options available upon request.

INSTALLATION

FLOOR-TO-FLOOR



FLOOR-TO-WALL/CORNER



For more information, download our Installation and Operating Manuals (IOM) and Shop Drawings on Nystrom.com

ORDER GUIDE

MODEL	APPLICATION	JOINT SIZE AT MEAN T°F	EXPOSED SIGHT LINE	TOTAL MOVEMENT
EJN-DT-100	Floor to Floor	1" (25mm)	4" (102mm)	2" (51mm)
EJN-DT-200	Floor to Floor	2" (51mm)	6" (152mm)	4" (102mm)
EJN-DT-300	Floor to Floor	3" (76mm)	8.5" (216mm)	6" (152mm)
EJN-DT-400	Floor to Floor	4" (102mm)	10" (254mm)	8" (203mm)
EJN-DT-600	Floor to Floor	6" (152mm)	14" (356mm)	12" (305mm)
EJN-DT-100w	Floor to Wall	1" (25mm)	2.5" (64mm)	2" (51mm)
EJN-DT-200w	Floor to Wall	2" (51mm)	4.5" (114mm)	4" (102mm)
EJN-DT-300w	Floor to Wall	3" (76mm)	6.5" (165mm)	6" (152mm)
EJN-DT-400w	Floor to Wall	4" (102mm)	8.5" (216mm)	8" (203mm)
EJN-DT-600w	Floor to Wall	6" (152mm)	12.5" (318mm)	12" (305mm)

Additional options available, email info@nystrom.com for more information.

Aluminum Gym Flooring System

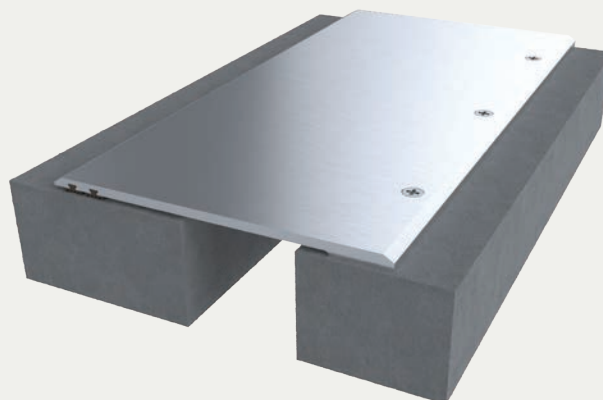
SURFACE APPLICATION (DTG)

BENEFITS

SOUND DAMPENING Ideal for gymnasium floors; features two gaskets to dampen sound in high-pedestrian traffic applications.

EASY INSTALLATION Easily installs on floor surface, directly to the substrate without the preformed blockout requirements.

ADA COMPLIANT Beveled edges provide a smooth, ADA-compliant transition.



DETAILS

MATERIAL 6063-T6 Aluminum, Meets ASTM B221

FINISH Mill

MOVEMENT Thermal: Horizontal

MOUNTING Surface

JOINT SIZE 1 inch and 2 inches

LENGTH 10 Linear Feet

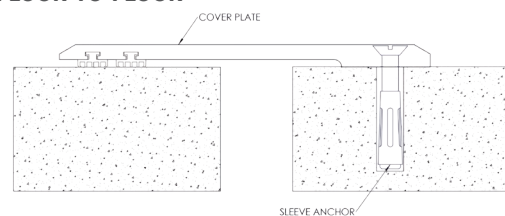
LOAD Pedestrian and Light Cart

INSTALLATION Floor

OPTIONS Moisture Barrier, Fire Barrier, Additional material options available upon request.

INSTALLATION

FLOOR-TO-FLOOR



For more information, download our Installation and Operating Manuals (IOM) and Shop Drawings on Nystrom.com

ORDER GUIDE

MODEL	APPLICATION	JOINT SIZE AT MEAN T°F	EXPOSED SIGHT LINE	TOTAL MOVEMENT
EJN-DTG-100	Surface	1" (25mm)	4.18" (107mm)	1" (25mm)
EJN-DTG-200	Surface	2" (51mm)	6" (153mm)	2" (51mm)

Additional options available, email info@nystrom.com for more information.

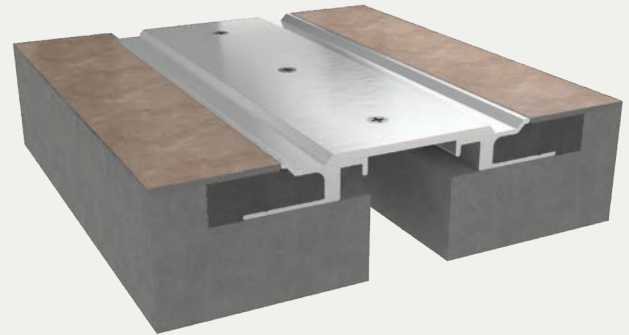
Seismic Aluminum Flooring System

RECESSED BLOCKOUT APPLICATION (SFG/SFGw)

BENEFITS

SEISMIC TECHNOLOGY The cover plate stays centered over openings before, during and after a seismic event with the use of the seismic centering bar.

ADA COMPLIANT Heavy pedestrian traffic requirements are met while maintaining an ADA Compliant transition.



DETAILS

MATERIAL

6063-T5 Aluminum, Meets ASTM B221 and B209
6061-T6 Aluminum, Meets ASTM B221 and B209
5052 H32 Aluminum, Meets ASTM B221 and B209

FINISH

Mill

MOVEMENT

- Thermal: Horizontal and Vertical
- Seismic: Lateral Shear

MOUNTING

Block Out

JOINT SIZE

2 inches to 12 inches

LENGTH

10 Linear Feet

APPLICATION

Interior

LOAD

Pedestrian and Light Cart

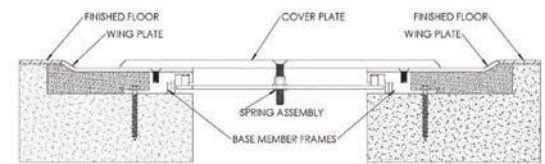
INSTALLATION

Floor

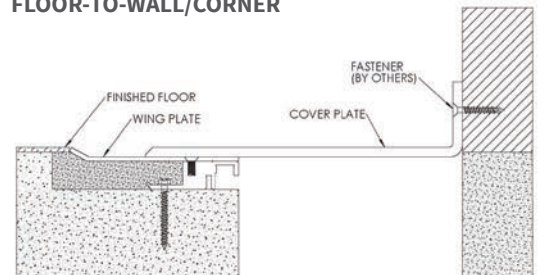
OPTIONS Moisture Barrier, Fire Barrier, and additional materials, sizes and finishes upon request

INSTALLATION

FLOOR-TO-FLOOR



FLOOR-TO-WALL/CORNER



For more information, download our Installation and Operating Manuals (IOM) and Shop Drawings on Nystrom.com

ORDER GUIDE

MODEL	APPLICATION	JOINT SIZE AT MEAN T°F	EXPOSED SIGHT LINE	TOTAL MOVEMENT
EJN-SFG-200	Floor to Floor	2" (51mm)	6" (152mm)	2" (51mm)
EJN-SFG-400	Floor to Floor	4" (102mm)	8.87" (225mm)	4" (102mm)
EJN-SFG-600	Floor to Floor	6" (152mm)	15" (382mm)	6" (152mm)
EJN-SFG-800	Floor to Floor	8" (203mm)	19" (483mm)	8" (203mm)
EJN-SFG-1000	Floor to Floor	10" (254mm)	23" (584mm)	10" (254mm)
EJN-SFG-1200	Floor to Floor	12" (305mm)	27" (686mm)	12" (305mm)
EJN-SFG-200W	Floor to Wall	2" (51mm)	4" (102mm)	1" (25mm)
EJN-SFG-400W	Floor to Wall	4" (102mm)	6.44" (164mm)	2" (51mm)
EJN-SFG-600W	Floor to Wall	6" (152mm)	10.5" (267mm)	3" (76mm)
EJN-SFG-800W	Floor to Wall	8" (203mm)	13.5" (343mm)	4" (102mm)
EJN-SFG-1000W	Floor to Wall	10" (254mm)	16.5" (419mm)	5" (127mm)
EJN-SFG-1200W	Floor to Wall	12" (305mm)	19.5" (495mm)	6" (152mm)

Additional options available, email info@nystrom.com for more information.

Seismic Aluminum Flooring System

SURFACE APPLICATION (SFE/SFEw)



BENEFITS

SEISMIC TECHNOLOGY The cover plate stays centered over openings before, during and after a seismic event with the use of the seismic centering bar.

RENOVATION Easy to install in non-blockout applications and meets ADA compliance.

DETAILS

MATERIAL

6063-T5 Aluminum, Meets ASTM B221
6061-T6 Aluminum, Meets ASTM B209
5052 H32 Aluminum, Meets ASTM B209

FINISH Mill

MOVEMENT

- Thermal: Horizontal and Vertical
- Seismic: Lateral Shear

MOUNTING Surface

JOINT SIZE 2 inches to 12 inches

LENGTH 10 Linear Feet

APPLICATION Interior

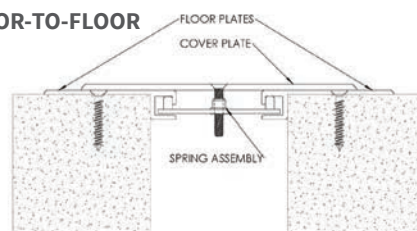
LOAD Pedestrian and Light Cart

INSTALLATION Floor

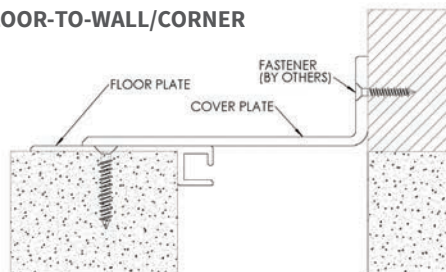
OPTIONS Moisture Barrier, Fire Barrier, and additional materials, sizes and finishes upon request

INSTALLATION

FLOOR-TO-FLOOR



FLOOR-TO-WALL/CORNER



AS BUILT CONDITIONS MAY VARY. For more information, download our Installation and Operation Manuals (IOM) and Shop Drawings on Nystrom.com

ORDER GUIDE

MODEL	APPLICATION	JOINT SIZE AT MEAN T°F	EXPOSED SIGHT LINE	TOTAL MOVEMENT
EJN-SFE-200	Floor to Floor	2" (51mm)	6.75" (171mm)	2" (51mm)
EJN-SFE-400	Floor to Floor	4" (102mm)	10.18" (258mm)	4" (102mm)
EJN-SFE-600	Floor to Floor	6" (152mm)	13.25" (337mm)	6" (152mm)
EJN-SFE-800	Floor to Floor	8" (203mm)	16.75" (425mm)	8" (203mm)
EJN-SFE-1000	Floor to Floor	10" (254mm)	20.75" (527mm)	10" (254mm)
EJN-SFE-1200	Floor to Floor	12" (305mm)	24.75" (629mm)	12" (305mm)
EJN-SFE-200W	Floor to Wall	2" (51mm)	4.37" (111mm)	1" (25mm)
EJN-SFE-400W	Floor to Wall	4" (102mm)	7.06" (180mm)	2" (51mm)
EJN-SFE-600W	Floor to Wall	6" (152mm)	9.62" (244mm)	3" (76mm)
EJN-SFE-800W	Floor to Wall	8" (203mm)	12.37" (314mm)	4" (102mm)
EJN-SFE-1000W	Floor to Wall	10" (254mm)	15.37" (391mm)	5" (127mm)
EJN-SFE-1200W	Floor to Wall	12" (305mm)	18.37" (467mm)	6" (152mm)

Additional options available, email info@nystrom.com for more information.

Seismic Aluminum Flooring System

SURFACE BLOCKOUT APPLICATION (SFC/SFCw)



BENEFITS

SEISMIC TECHNOLOGY The cover plate stays centered over openings before, during and after a seismic event with the use of the seismic centering bar.

ADA COMPLIANT Heavy pedestrian traffic requirements are met while maintaining an ADA Compliant transition.

DETAILS

MATERIAL

6063-T5 Aluminum, Meets ASTB B221
6061-T6 Aluminum, Meets ASTM B209
5052 H32 Aluminum, Meets ASTM B209

FINISH

Mill

MOVEMENT

- Thermal: Horizontal and vertical
- Seismic: Lateral Shear

MOUNTING

Block Out

JOINT SIZE

2 inches to 12 inches

LENGTH

10 Linear Feet

APPLICATION

Interior

LOAD

Pedestrian and Light Cart

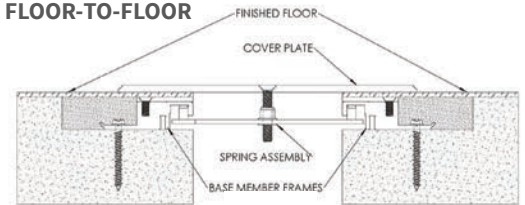
INSTALLATION

Floor

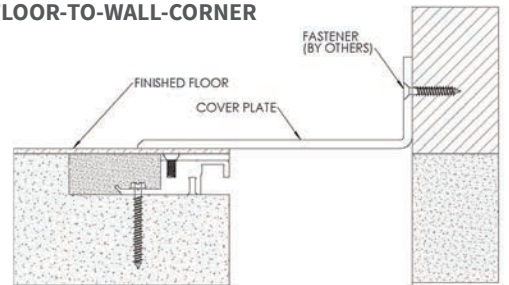
OPTIONS Moisture Barrier, Fire Barrier, and Additional Materials, Sizes and Finishes Upon Request

INSTALLATION

FLOOR-TO-FLOOR



FLOOR-TO-WALL-CORNER



For more information, download our Installation and Operating Manuals (IOM) and Shop Drawings on Nystrom.com

ORDER GUIDE

MODEL	APPLICATION	JOINT SIZE AT MEAN T°F	EXPOSED SIGHT LINE	TOTAL MOVEMENT
EJN-SFC-200	Floor to Floor	2" (51mm)	5" (127mm)	2" (51mm)
EJN-SFC-400	Floor to Floor	4" (102mm)	8" (203mm)	4" (102mm)
EJN-SFC-600	Floor to Floor	6" (152mm)	11" (279mm)	6" (152mm)
EJN-SFC-800	Floor to Floor	8" (203mm)	14" (356mm)	8" (203mm)
EJN-SFC-1000	Floor to Floor	10" (254mm)	17" (432mm)	10" (254mm)
EJN-SFC-1200	Floor to Floor	12" (305mm)	20" (508mm)	12" (305mm)
EJN-SFC-200W	Floor to Wall	2" (51mm)	3.5" (89mm)	1" (25mm)
EJN-SFC-400W	Floor to Wall	4" (102mm)	6" (152mm)	2" (51mm)
EJN-SFC-600W	Floor to Wall	6" (152mm)	8.5" (216mm)	3" (76mm)
EJN-SFC-800W	Floor to Wall	8" (203mm)	11" (279mm)	4" (102mm)
EJN-SFC-1000W	Floor to Wall	10" (254mm)	13.5" (343mm)	5" (127mm)
EJN-SFC-1200W	Floor to Wall	12" (305mm)	16" (406mm)	6" (152mm)

Additional options available, email info@nystrom.com for more information.

Seismic Aluminum Flooring System

NO BUMP BLOCKOUT APPLICATION (SFP/SFPw)

BENEFITS

SEISMIC TECHNOLOGY The cover plate stays centered over openings before, during and after a seismic event with the use of the seismic centering bar.

ADA COMPLIANT Heavy pedestrian traffic requirements are met while maintaining an ADA compliant transition and no bump transition.



DETAILS

MATERIAL

6063-T5 Aluminum, Meets ASTM B221
6061-T6 Aluminum, Meets ASTM B209
5052 H32 Aluminum, Meets ASTM B209

FINISH

Mill

MOVEMENT

- Thermal: Horizontal and Vertical
- Seismic: Lateral Shear

MOUNTING

Blockout

JOINT SIZE

2 inches to 12 inches

LENGTH

10 Linear Feet

APPLICATION

Interior

LOAD

Pedestrian and Light Cart

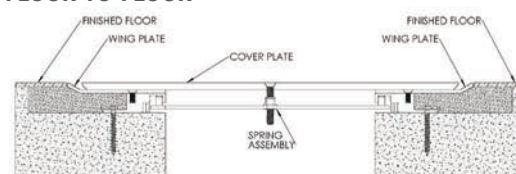
INSTALLATION

Floor

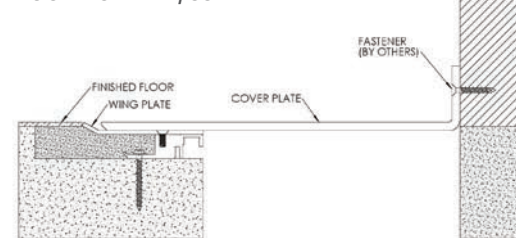
OPTIONS Moisture Barrier, Fire Barrier, additional materials, sizes, infill and finishes upon request

INSTALLATION

FLOOR-TO-FLOOR



FLOOR-TO-WALL/CORNER



AS BUILT CONDITIONS MAY VARY. For more information, download our Installation and Operation Manuals (IOM) and Shop Drawings on nystrom.com

ORDER GUIDE

MODEL	APPLICATION	JOINT SIZE AT MEAN T°F	EXPOSED SIGHT LINE	TOTAL MOVEMENT
EJN-SFP-200	Floor to Floor	2" (51mm)	6" (152mm)	2" (51mm)
EJN-SFP-400	Floor to Floor	4" (102mm)	8" (203mm)	4" (102mm)
EJN-SFP-600	Floor to Floor	6" (152mm)	10.87" (276mm)	6" (152mm)
EJN-SFP-800	Floor to Floor	8" (203mm)	15.5" (394mm)	8" (203mm)
EJN-SFP-1000	Floor to Floor	10" (254mm)	18.5" (470mm)	10" (254mm)
EJN-SFP-1200	Floor to Floor	12" (305mm)	21.5" (546mm)	12" (305mm)
EJN-SFP-200W	Floor to Wall	2" (51mm)	4" (102mm)	1" (25mm)
EJN-SFP-400W	Floor to Wall	4" (102mm)	6" (152mm)	2" (51mm)
EJN-SFP-600W	Floor to Wall	6" (152mm)	8.43" (214mm)	3" (76mm)
EJN-SFP-800W	Floor to Wall	8" (203mm)	11.75" (298mm)	4" (102mm)
EJN-SFP-1000W	Floor to Wall	10" (254mm)	14.25" (362mm)	5" (127mm)
EJN-SFP-1200W	Floor to Wall	12" (305mm)	16.75" (425mm)	6" (152mm)

Additional options available, email info@nystrom.com for more information.

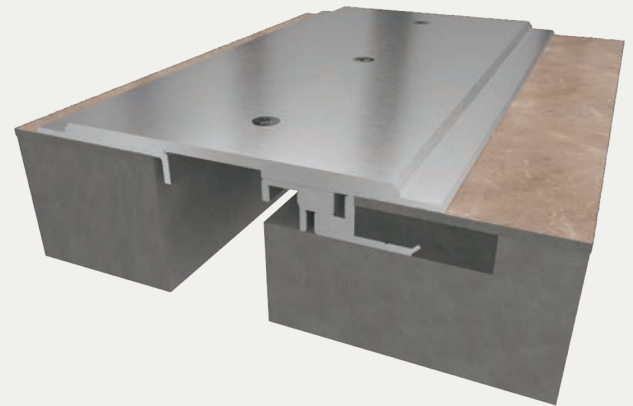
Seismic Aluminum Flooring System

RENOVATION BLOCKOUT APPLICATION (SFB/SFBw)

BENEFITS

SEISMIC TECHNOLOGY The cover plate stays centered over openings before, during and after a seismic event with the use of the seismic centering bar.

ADA COMPLIANT Heavy pedestrian traffic requirements are met while maintaining an ADA compliant transition.



DETAILS

MATERIAL

6063-T5 Aluminum, Meets ASTB B221
6061-T6 Aluminum, Meets ASTB B209
5052 H32 Aluminum, Meets ASTM B209

FINISH

Mill

MOVEMENT

- Thermal: Horizontal and Vertical
- Seismic: Lateral Shear

MOUNTING

Block Out / Surface

JOINT SIZE

2 inches to 12 inches

LENGTH

10 Linear Feet

APPLICATION

Interior

LOAD

Pedestrian and Light Cart

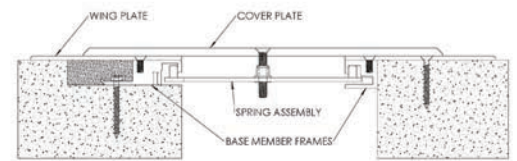
INSTALLATION

Floor

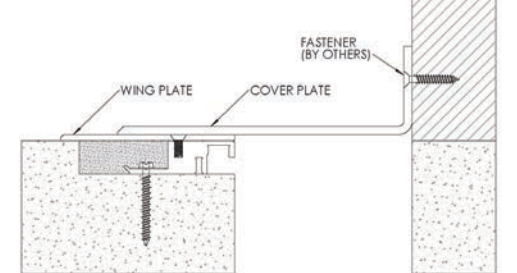
OPTIONS Moisture Barrier, Fire Barrier and additional materials, sizes and finishes upon request

INSTALLATION

FLOOR-TO-FLOOR



FLOOR-TO-WALL-CORNER



For more information, download our Installation and Operating Manuals (IOM) and Shop Drawings on Nystrom.com

ORDER GUIDE

MODEL	APPLICATION	JOINT SIZE AT MEAN T°F	EXPOSED SIGHT LINE	TOTAL MOVEMENT
EJN-SFB-200	Floor to Existing Floor	2" (51mm)	7.25" (184mm)	2" (51mm)
EJN-SFB-400	Floor to Existing Floor	4" (102mm)	11" (279mm)	4" (102mm)
EJN-SFB-600	Floor to Existing Floor	6" (152mm)	14.25" (362mm)	6" (152mm)
EJN-SFB-800	Floor to Existing Floor	8" (203mm)	17.75" (451mm)	8" (203mm)
EJN-SFB-1000	Floor to Existing Floor	10" (254mm)	21.25" (539mm)	10" (254mm)
EJN-SFB-1200	Floor to Existing Floor	12" (305mm)	25.25" (641mm)	12" (305mm)
EJN-SFB-200W	Floor to Wall Corner	2" (51mm)	4.75" (121mm)	1" (25mm)
EJN-SFB-400W	Floor to Wall Corner	4" (102mm)	7.94" (201mm)	2" (51mm)
EJN-SFB-600W	Floor to Wall Corner	6" (152mm)	10.62" (270mm)	3" (76mm)
EJN-SFB-800W	Floor to Wall Corner	8" (203mm)	13.37" (340mm)	4" (102mm)
EJN-SFB-1000W	Floor to Wall Corner	10" (254mm)	16.12" (410mm)	5" (127mm)
EJN-SFB-1200W	Floor to Wall Corner	12" (305mm)	19.12" (486mm)	6" (152mm)

Additional options available, email info@nystrom.com for more information.

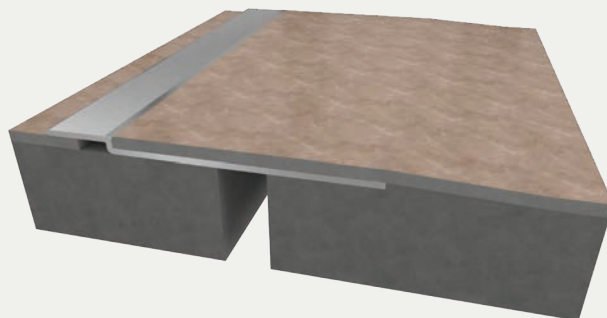
Aluminum Flooring System

SINGLE WING INFILL APPLICATION (SA)

BENEFITS

COORDINATE WITH FLOORING Seamless integration with existing VCT, carpet and tile flooring.

ADA COMPLIANT This system is not a trip hazard as the no bump design provides a finished flush floor transition.



DETAILS

MATERIAL 6063-T6 Aluminum, Meets ASTM B221

FINISH Mill

MOVEMENT Thermal: Horizontal

MOUNTING Surface

JOINT SIZE Up to 2 inches

LENGTH 10 Linear Feet

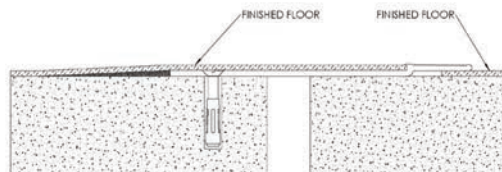
LOAD Pedestrian and Light Cart

INSTALLATION Floor

OPTIONS Moisture Barrier, Fire Barrier, Additional materials, sizes, and finishes available upon request.

INSTALLATION

SINGLE WING FLOORING INFILL SYSTEM



AS BUILT CONDITIONS MAY VARY. For more information, download our Installation and Operation Manuals (IOM) and Shop Drawings on nystrom.com

ORDER GUIDE

MODEL	APPLICATION	JOINT SIZE AT MEAN T°F	EXPOSED SIGHT LINE	INFILL HEIGHT	TOTAL MOVEMENT
EJN-SA150-125	Floor to Floor	2" (51mm)	1.5" (38mm)	0.125" (3mm)	1.25" (32mm)
EJN-SA150-250	Floor to Floor	2" (51mm)	1.5" (38mm)	0.25" (6mm)	1.25" (32mm)
EJN-SA150-375	Floor to Floor	2" (51mm)	1.5" (38mm)	0.375" (10mm)	1.25" (32mm)

Additional sizes available, email info@nystrom.com for more information.

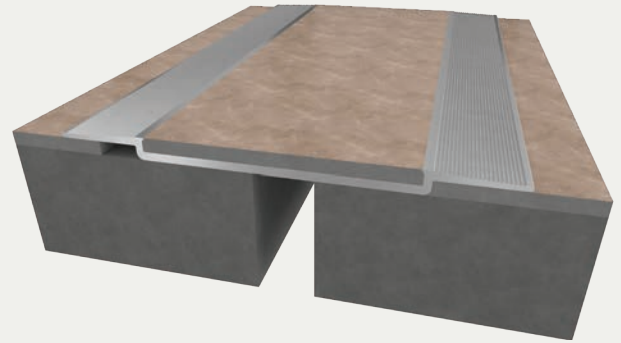
Aluminum Flooring System

DOUBLE WING INFILL APPLICATION (DA)

BENEFITS

COORDINATE WITH FLOORING Seamless integration with existing VCT, carpet and tile flooring.

ADA COMPLIANT This system is not a trip hazard as the no bump design provides a finished flush floor transition.



DETAILS

MATERIAL 6063-T6 Aluminum, Meets ASTM B221

FINISH Mill

MOVEMENT Thermal: Horizontal

MOUNTING Surface

JOINT SIZE Up to 2 inches

LENGTH 10 Linear Feet

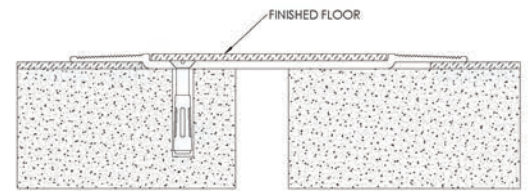
LOAD Pedestrian and Light Cart

INSTALLATION Floor

OPTIONS Moisture Barrier, Fire Barrier, Additional materials, sizes, and finishes available upon request.

INSTALLATION

DOUBLE WING FLOORING INFILL SYSTEM



AS BUILT CONDITIONS MAY VARY. For more information, download our Installation and Operation Manuals (IOM) and Shop Drawings on nystrom.com

ORDER GUIDE

MODEL	APPLICATION	JOINT SIZE AT MEAN T°F	EXPOSED SIGHT LINE	INFILL HEIGHT	TOTAL MOVEMENT
EJN-DA150-125	Floor to Floor	2" (51mm)	3" (76mm)	0.125" (3mm)	1.25" (32mm)
EJN-DA150-250	Floor to Floor	2" (51mm)	3" (76mm)	0.25" (6mm)	1.25" (32mm)
EJN-DA150-375	Floor to Floor	2" (51mm)	3" (76mm)	0.375" (10mm)	1.25" (32mm)

Additional sizes available, email info@nystrom.com for more information.

Aluminum Hinged Flooring System

SINGLE WING INFILL APPLICATION (FA/FAw)

BENEFITS

MINIMAL SIGHT LINE Integrates with floor material and handles substrate offset.

SURFACE MOUNT No blockout is required. Simply anchor to subfloor.



DETAILS

MATERIAL 6063-T5 Aluminum, Meets ASTM B221

FINISH Mill

MOVEMENT Thermal: Horizontal and Vertical

MOUNTING Surface

JOINT SIZE 2 inches to 3 inches

LENGTH 10 Linear Feet

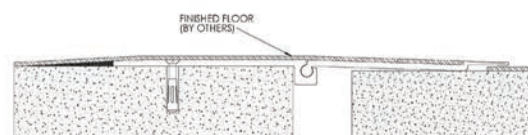
LOAD Pedestrian and Light Cart

INSTALLATION Floor

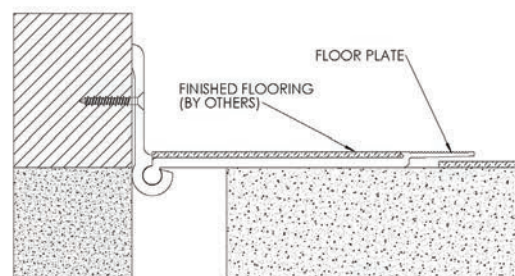
OPTIONS Moisture barrier, Fire barrier

INSTALLATION

FLOOR-TO-FLOOR



FLOOR-TO-CORNER



For more information, download our Installation and Operating Manuals (IOM) and Shop Drawings on Nystrom.com

ORDER GUIDE

MODEL	APPLICATION	JOINT SIZE AT MEAN T°F	EXPOSED SIGHT LINE	INFILL HEIGHT	TOTAL MOVEMENT
EJN-FA150-125	Floor to Floor	3" (76mm)	1.5" (38mm)	0.125" (3mm)	1.25" (32mm)
EJN-FA150-250	Floor to Floor	3" (76mm)	1.5" (38mm)	0.25" (6mm)	1.25" (32mm)
EJN-FA150-375	Floor to Floor	3" (76mm)	1.5" (38mm)	0.375" (10mm)	1.25" (32mm)
EJN-FA150-125W	Floor to Wall	3" (76mm)	1.5" (38mm)	0.125" (3mm)	1.25" (32mm)
EJN-FA150-250W	Floor to Wall	3" (76mm)	1.5" (38mm)	0.25" (6mm)	1.25" (32mm)
EJN-FA150-375W	Floor to Wall	3" (76mm)	1.5" (38mm)	0.375" (10mm)	1.25" (32mm)

Additional sizes available, email info@nystrom.com for more information.

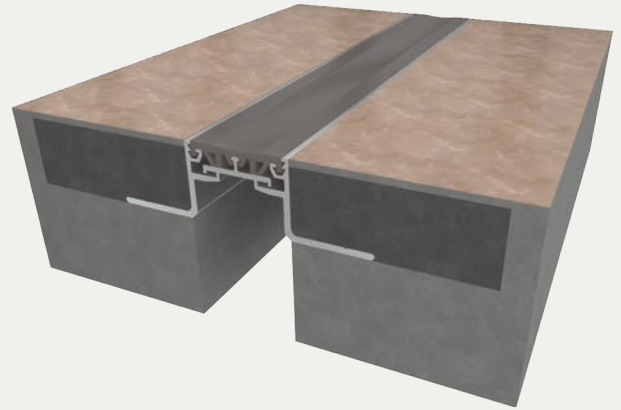
Elastomeric Corridor Flooring System

BLOCKOUT APPLICATION (LCF/LCFw)

BENEFITS

COORDINATING CORNERS Available with corner option for a complete floor solution.

COMPLEMENTARY SEAL COLORS Available in four elastomeric colors: beige, white, gray or black.



DETAILS

MATERIAL 6063-T5 Aluminum, Meets ASTM B221 and Santoprene

FINISH Mill

MOVEMENT Thermal: Horizontal

MOUNTING Blockout

JOINT SIZE 1 inch to 3 inches

LENGTH 10 Linear Feet

LOAD Pedestrian and Light Cart

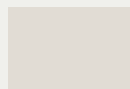
INSTALLATION Floor

OPTIONS Moisture barrier, Fire barrier and Additional Materials, Sizes and Finishes upon request

SEAL COLORS



Beige



White



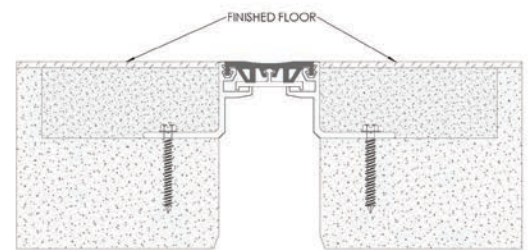
Gray



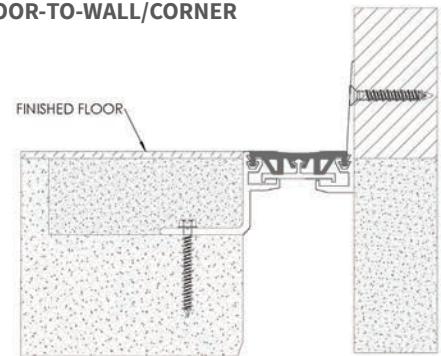
Black

INSTALLATION

FLOOR-TO-FLOOR



FLOOR-TO-WALL/CORNER



For more information, download our Installation and Operating Manuals (IOM) and Shop Drawings on Nystrom.com

ORDER GUIDE

MODEL	APPLICATION	JOINT SIZE AT MEAN T°F	EXPOSED SIGHT LINE	TOTAL MOVEMENT
EJN-LCF-100	Floor to Floor	1" (25mm)	1" (25mm)	.5" (13mm)
EJN-LCF-200	Floor to Floor	2" (51mm)	2" (51mm)	1" (25mm)
EJN-LCF-300	Floor to Floor	3" (76mm)	3" (76mm)	1.02" (26mm)
EJN-LCF-100W	Floor to Wall	1" (25mm)	1" (25mm)	.5" (13mm)
EJN-LCF-200W	Floor to Wall	2" (51mm)	2" (51mm)	1" (25mm)
EJN-LCF-300W	Floor to Wall	3" (76mm)	3" (76mm)	1.02" (26mm)

Additional sizes available, email info@nystrom.com for more information.

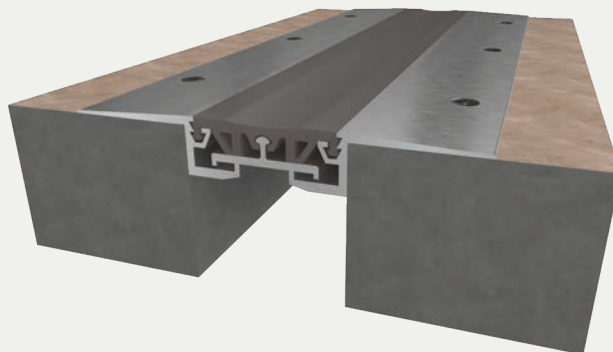
Elastomeric Corridor Flooring System

SURFACE APPLICATION (LCFS/LCFSw)

BENEFITS

COORDINATING CORNERS Available with corner option for a complete floor solution.

COMPLEMENTARY SEAL COLORS Available in four elastomeric colors: beige, white, gray or black.



DETAILS

MATERIAL 6063-T5 Aluminum, Meets ASTM B221 and Santoprene

FINISH Mill

MOVEMENT Thermal: Horizontal

MOUNTING Surface

JOINT SIZE 1 inch to 3 inches

LENGTH 10 Linear Feet

LOAD Pedestrian and Light Cart

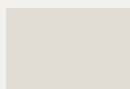
INSTALLATION Floor

OPTIONS Moisture barrier, Fire barrier and Additional Materials, Sizes and Finishes upon request

SEAL COLORS



Beige



White



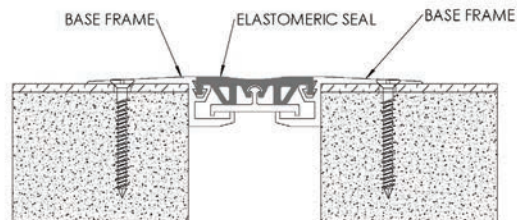
Gray



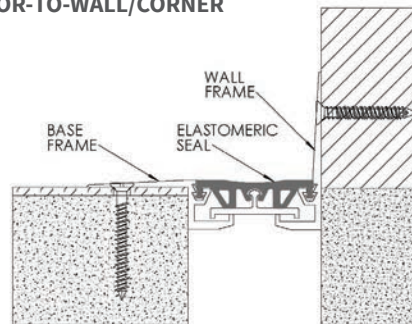
Black

INSTALLATION

FLOOR-TO-FLOOR



FLOOR-TO-WALL/CORNER



For more information, download our Installation and Operating Manuals (IOM) and Shop Drawings on Nystrom.com

ORDER GUIDE

MODEL	APPLICATION	JOINT SIZE AT MEAN T°F	EXPOSED SIGHT LINE	TOTAL MOVEMENT
EJN-LCFS-100	Floor to Floor	1" (25mm)	4" (102mm)	.5" (13mm)
EJN-LCFS-200	Floor to Floor	2" (51mm)	5" (127mm)	1" (25mm)
EJN-LCFS-300	Floor to Floor	3" (76mm)	6" (152mm)	1.02" (26mm)
EJN-LCFS-100W	Floor to Wall	1" (25mm)	2.5" (64mm)	.5" (13mm)
EJN-LCFS-200W	Floor to Wall	2" (51mm)	3.5" (89mm)	1" (25mm)
EJN-LCFS-300W	Floor to Wall	3" (76mm)	4.5" (114mm)	1.02" (26mm)

Additional sizes available, email info@nystrom.com for more information.

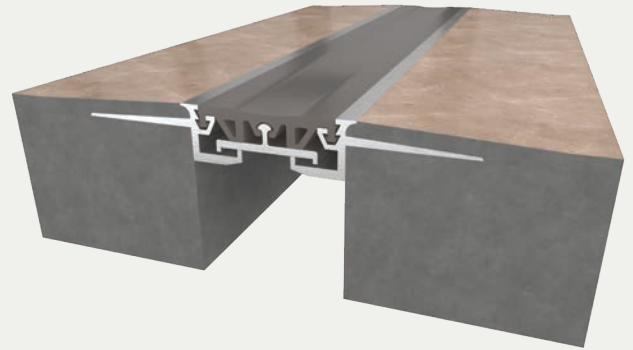
Elastomeric Corridor Flooring System

INFILL APPLICATION (LCFC/LCFCw)

BENEFITS

COORDINATING CORNERS Available with corner option for a complete floor solution.

COMPLEMENTARY SEAL COLORS Available in four elastomeric colors: beige, white, gray or black.



DETAILS

MATERIAL 6063-T5 Aluminum, Meets ASTM B221 and Santoprene

FINISH Mill

MOVEMENT Thermal: Horizontal

MOUNTING Surface

JOINT SIZE 1 inch to 3 inches

LENGTH 10 Linear Feet

LOAD Pedestrian and Light Cart

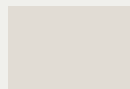
INSTALLATION Floor

OPTIONS Moisture barrier, Fire barrier and Additional Materials, Sizes and Finishes upon request

SEAL COLORS



Beige



White



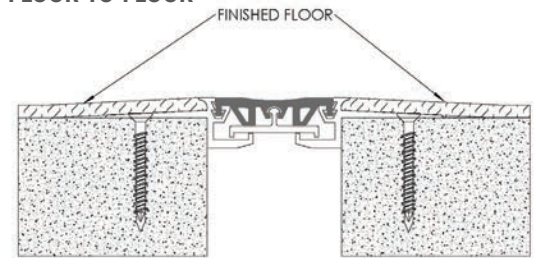
Gray



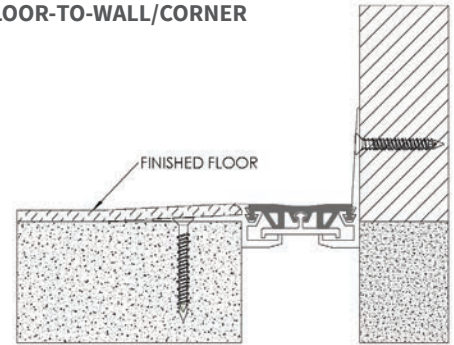
Black

INSTALLATION

FLOOR-TO-FLOOR



FLOOR-TO-WALL/CORNER



For more information, download our Installation and Operating Manuals (IOM) and Shop Drawings on Nystrom.com

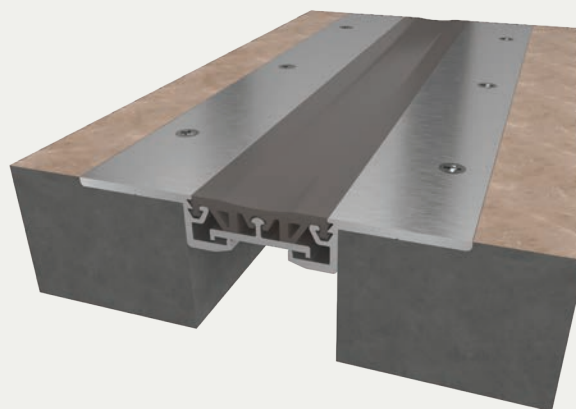
ORDER GUIDE

MODEL	APPLICATION	JOINT SIZE AT MEAN T°F	EXPOSED SIGHT LINE	INFILL HEIGHT	TOTAL MOVEMENT
EJN-LCFC-100	Floor to Floor	1" (25mm)	1.25" (31mm)	.187" (5mm)	.5" (13mm)
EJN-LCFC-200	Floor to Floor	2" (51mm)	2.25" (57mm)	.187" (5mm)	1" (25mm)
EJN-LCFC-300	Floor to Floor	3" (76mm)	3.25" (83mm)	.187" (5mm)	1.02" (26mm)
EJN-LCFC-100W	Floor to Wall	1" (25mm)	1.12" (29mm)	.187" (5mm)	.5" (13mm)
EJN-LCFC-200W	Floor to Wall	2" (51mm)	2.12" (54mm)	.187" (5mm)	1" (25mm)
EJN-LCFC-300W	Floor to Wall	3" (76mm)	3.12" (79mm)	.187" (5mm)	1.02" (26mm)

Additional sizes available, email info@nystrom.com for more information.

Elastomeric Corridor Flooring System

TILE APPLICATION (LCFT/LCFTw)



BENEFITS

COORDINATING CORNERS Available with corner option for a complete floor solution.

COMPLEMENTARY SEAL COLORS Available in four elastomeric colors: beige, white, gray or black.

DETAILS

MATERIAL 6063-T5 Aluminum, Meets ASTM B221 and Santoprene

FINISH Mill

MOVEMENT Thermal: Horizontal

MOUNTING Surface

JOINT SIZE 1 inch to 3 inches

LENGTH 10 Linear Feet

LOAD Pedestrian and Light Cart

INSTALLATION Floor

OPTIONS Moisture barrier, Fire barrier and Additional Materials, Sizes and Finishes upon request

SEAL COLORS



Beige



White



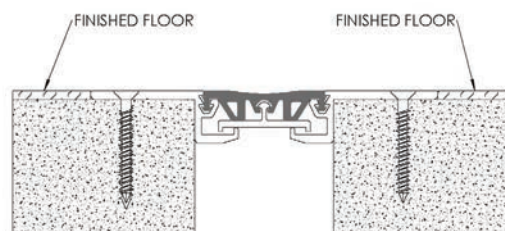
Gray



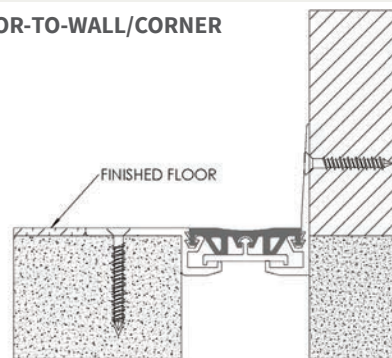
Black

INSTALLATION

FLOOR-TO-FLOOR



FLOOR-TO-WALL/CORNER



For more information, download our Installation and Operating Manuals (IOM) and Shop Drawings on Nystrom.com

ORDER GUIDE

MODEL	APPLICATION	JOINT SIZE AT MEAN T°F	EXPOSED SIGHT LINE	TOTAL MOVEMENT
EJN-LCFT-100	Floor to Floor	1" (25mm)	4" (102mm)	.5" (13mm)
EJN-LCFT-200	Floor to Floor	2" (51mm)	5" (127mm)	1" (25mm)
EJN-LCFT-300	Floor to Floor	3" (76mm)	6" (152mm)	1.02" (26mm)
EJN-LCFT-100W	Floor to Wall	1" (25mm)	2.5" (64mm)	.5" (13mm)
EJN-LCFT-200W	Floor to Wall	2" (51mm)	3.5" (89mm)	1" (25mm)
EJN-LCFT-300W	Floor to Wall	3" (76mm)	4.5" (114mm)	1.02" (26mm)

Additional sizes available, email info@nystrom.com for more information.

Seismic Pan Flooring System

BLOCKOUT APPLICATION (FLP/FLPw)

BENEFITS

DEEP WELL PAN Designed for terrazzo tile when large sections of tile are common.

DURABLE The backfilled concrete strengthens the design for long lasting performance.



DETAILS

MATERIAL 6063-T6 Aluminum

FINISH Mill

MOVEMENT

- Thermal: Horizontal and Vertical
- Seismic: Lateral Shear
- Total Thermal Movement Capabilities is limited to the 2-Component Polyurethane Sealant Used.

MOUNTING Blockout

JOINT SIZE 2 inches to 18 inches

LENGTH 10 Linear Feet

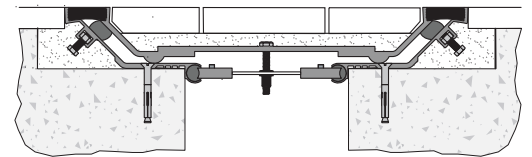
LOAD Pedestrian and Light Cart

INSTALLATION Floor

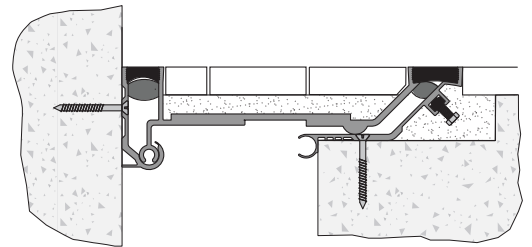
OPTIONS Moisture Barrier, Fire Barrier, Additional material options available upon request.

INSTALLATION

FLOOR-TO-FLOOR



FLOOR-TO-WALL/CORNER



For more information, download our Installation and Operating Manuals (IOM) and Shop Drawings on nystrom.com

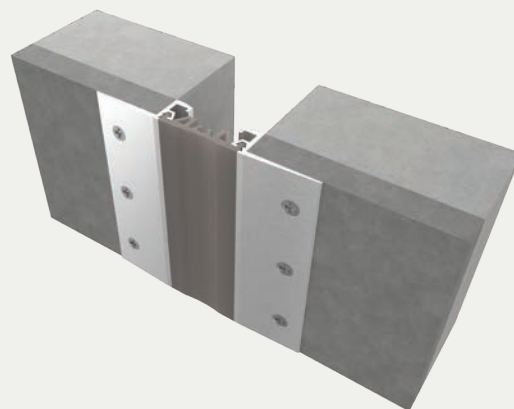
ORDER GUIDE

MODEL	APPLICATION	JOINT SIZE AT MEAN T°F	SYSTEM WIDTH	TOTAL MOVEMENT
FLP-200	Floor to Floor	2" (51mm)	10.8125" (275mm)	3" (76mm)
FLP-400	Floor to Floor	4" (102mm)	12.88" (327mm)	4.75" (121mm)
FLP-600	Floor to Floor	6" (152mm)	14.88" (378mm)	7.75" (197mm)
FLP-800	Floor to Floor	8" (203mm)	18.88" (480mm)	10.75" (273mm)
FLP-1000	Floor to Floor	10" (254mm)	20.88" (530mm)	13.75" (349mm)
FLP-1200	Floor to Wall	12" (305mm)	23.88" (607mm)	16.75" (425mm)
FLP-1600	Floor to Floor	16" (406mm)	29.88" (759mm)	22.75" (578mm)
FLP-1800	Floor to Floor	18" (457mm)	34.88" (886mm)	25.75" (654mm)
FLP-200W	Floor to Wall	2" (51mm)	6.4375" (164mm)	1.375" (35mm)
FLP-400W	Floor to Wall	4" (102mm)	8.44" (214mm)	3" (76mm)
FLP-600W	Floor to Wall	6" (152mm)	10.44" (265mm)	5.5" (140mm)
FLP-800W	Floor to Wall	8" (203mm)	13.44" (341mm)	8" (203mm)
FLP-1000W	Floor to Wall	10" (254mm)	15.44" (392mm)	10.5" (267mm)
FLP-1200W	Floor to Wall	12" (305mm)	17.94" (456mm)	13" (330mm)
FLP-1600W	Floor to Wall	16" (406mm)	22.94" (583mm)	18" (457mm)
FLP-1800W	Floor to Wall	18" (457mm)	26.44" (672mm)	20.5" (521mm)

Additional options available, email info@nystrom.com for more information.

Elastomeric Corridor Wall & Ceiling System

SURFACE APPLICATION (LCWS/LCWSw)



BENEFITS

COMPLEMENTARY SEAL COLORS Available in four elastomeric colors: beige, white, gray or black.

QUICKER INSTALLATION Reduce installation time and labor costs with fast and easy installation.

DETAILS

MATERIAL 6063-T5 Aluminum, Meets ASTM B221 and Santoprene

FINISH Clear Anodized

MOVEMENT Thermal: Horizontal

MOUNTING Surface

JOINT SIZE 1 inch to 3 inches

LENGTH 10 Linear Feet

APPLICATION Interior

INSTALLATION Wall or Ceiling

OPTIONS Moisture barrier, Fire barrier and Additional Materials, Sizes and Finishes upon request

SEAL COLORS



Beige



White



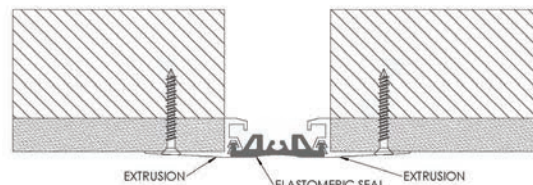
Gray



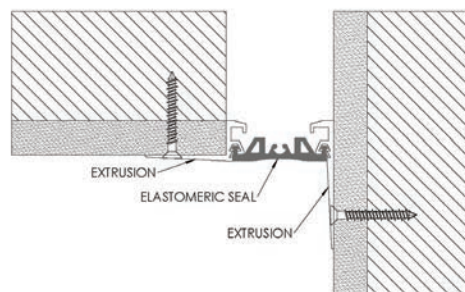
Black

DETAILS

WALL-TO-WALL



WALL-TO-WALL/CORNER



For more information, download our Installation and Operating Manuals (IOM) and Shop Drawings on Nystrom.com

ORDER GUIDE

MODEL	APPLICATION	JOINT SIZE AT MEAN T°F	EXPOSED SIGHT LINE	TOTAL MOVEMENT
EJN-LCWS-100	Wall/Ceiling to Wall/Ceiling	1" (25mm)	4" (102mm)	.5" (13mm)
EJN-LCWS-200	Wall/Ceiling to Wall/Ceiling	2" (51mm)	5" (127mm)	1" (25mm)
EJN-LCWS-300	Wall/Ceiling to Wall/Ceiling	3" (76mm)	6" (152mm)	1.5" (38mm)
EJN-LCWS-100W	Wall/Ceiling to Corner	1" (25mm)	2.5" (64mm)	.5" (13mm)
EJN-LCWS-200W	Wall/Ceiling to Corner	2" (51mm)	3.5" (89mm)	1" (25mm)
EJN-LCWS-300W	Wall/Ceiling to Corner	3" (76mm)	4.5" (114mm)	1.5" (38mm)

Additional sizes available, email info@nystrom.com for more information.

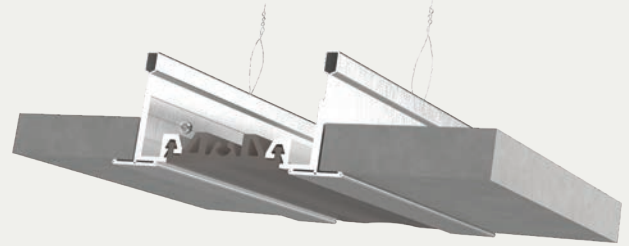
Elastomeric Corridor Ceiling System

ACOUSTICAL TILE APPLICATION (LCA/LCAw)

BENEFITS

ACOUSTIC CEILING Fully integrated with suspended ceiling grid system.

COMPLEMENTARY SEAL COLORS Available in four elastomeric colors: beige, white, gray or black.



DETAILS

MATERIAL 6063-T5 Aluminum, Meets ASTM B221 and Santoprene

FINISH Mill

MOVEMENT Thermal: Horizontal and Vertical

MOUNTING Flush, Suspended

JOINT SIZE 1 inch to 3 inches

LENGTH 10 Linear Feet

APPLICATION Interior

INSTALLATION Ceiling

OPTIONS Additional Materials, Sizes and Finishes upon request

SEAL COLORS



Beige



White



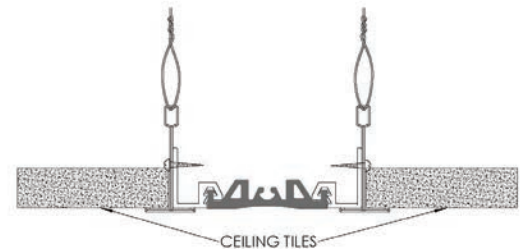
Gray



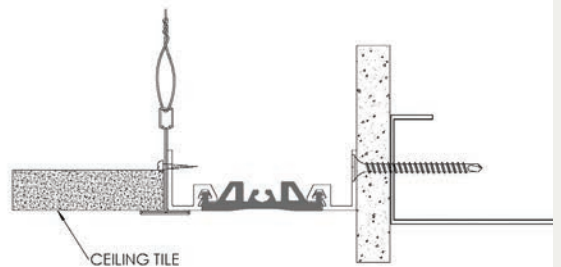
Black

INSTALLATION

CEILING-TO-CEILING



CEILING-TO-CORNER



For more information, download our Installation and Operating Manuals (IOM) and Shop Drawings on Nystrom.com

ORDER GUIDE

MODEL	APPLICATION	JOINT SIZE AT MEAN T°F	EXPOSED SIGHT LINE	TOTAL MOVEMENT
EJN-LCA-100	Ceiling to Ceiling	1" (25mm)	1" (25mm)	.5" (13mm)
EJN-LCA-200	Ceiling to Ceiling	2" (51mm)	2" (51mm)	1" (25mm)
EJN-LCA-300	Ceiling to Ceiling	3" (76mm)	3" (76mm)	1.5" (38mm)
EJN-LCA-100W	Ceiling to Ceiling Corner	1" (25mm)	1.37" (35mm)	.5" (13mm)
EJN-LCA-200W	Ceiling to Ceiling Corner	2" (51mm)	2.37" (60mm)	1" (25mm)
EJN-LCA-300W	Ceiling to Ceiling Corner	3" (76mm)	3.37" (85mm)	1.5" (38mm)

Additional sizes available, email info@nystrom.com for more information.

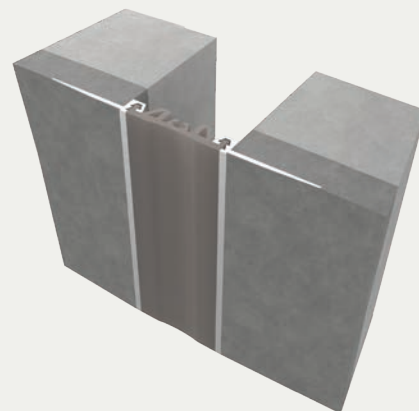
Elastomeric Corridor Wall & Ceiling System

DRYWALL BEAD APPLICATION (LCW/LCWw)

BENEFITS

COMPLEMENTARY SEAL COLORS Available in four elastomeric colors: beige, white, gray or black.

QUICKER INSTALLATION Reduce installation time and labor costs with fast and easy installation.



DETAILS

MATERIAL 6063-T5 Aluminum, Meets ASTM B221 and Santoprene

FINISH Mill

MOVEMENT Thermal: Horizontal

MOUNTING Flush with Drywall Bead

JOINT SIZE 1 inch to 3 inches

LENGTH 10 Linear Feet

APPLICATION Interior

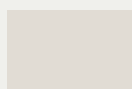
INSTALLATION Wall or Ceiling

OPTIONS Moisture barrier, Fire barrier and Additional Materials, Sizes and Finishes upon request

SEAL COLORS



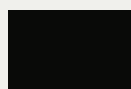
Beige



White



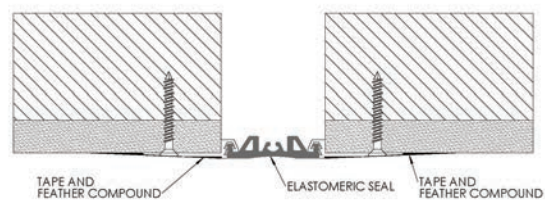
Gray



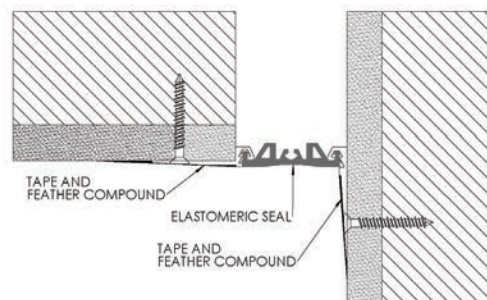
Black

INSTALLATION

WALL-TO-WALL



WALL-TO-WALL/CORNER



For more information, download our Installation and Operating Manuals (IOM) and Shop Drawings on Nystrom.com

ORDER GUIDE

MODEL	APPLICATION	JOINT SIZE AT MEAN T°F	EXPOSED SIGHT LINE	TOTAL MOVEMENT
EJN-LCW-100	Wall/Ceiling to Wall/Ceiling	1" (25mm)	1" (25mm)	.5" (13mm)
EJN-LCW-200	Wall/Ceiling to Wall/Ceiling	2" (51mm)	2" (51mm)	1" (25mm)
EJN-LCW-300	Wall/Ceiling to Wall/Ceiling	3" (76mm)	3" (76mm)	1.5" (38mm)
EJN-LCW-100W	Wall/Ceiling to Corner	1" (25mm)	1" (25mm)	.5" (13mm)
EJN-LCW-200W	Wall/Ceiling to Corner	2" (51mm)	2" (51mm)	1" (25mm)
EJN-LCW-300W	Wall/Ceiling to Corner	3" (76mm)	3" (76mm)	1.5" (38mm)

Additional sizes available, email info@nystrom.com for more information.

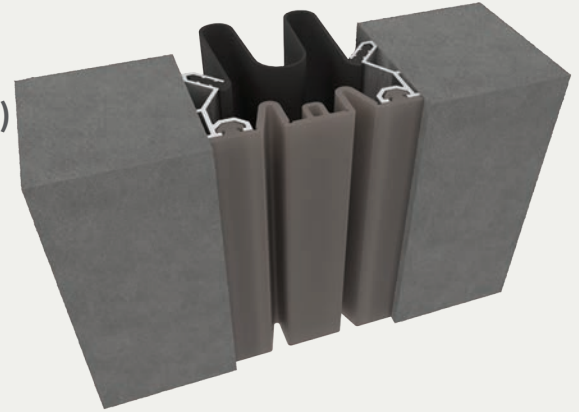
Seismic Elastomeric Wall & Ceiling System

EXTERIOR RECESSED APPLICATION (EWN/EWNw)

BENEFITS

WEATHER RESISTANT The combination of the visual seal and moisture barrier ensures the elements are kept outside.

CONTINUOUS SIGHT LINE This system can be used on walls, ceilings and corners to provide seamless and continuous aesthetics.



DETAILS

MATERIAL 6063-T6 Aluminum, Meets ASTM B209

FINISH Mill

MOVEMENT

- Thermal: Horizontal and Vertical
- Seismic: Lateral Shear

MOUNTING Recessed

JOINT SIZE 2 inches to 24 inches

SEAL LENGTH Continuous

APPLICATION Exterior

INSTALLATION Wall or Ceiling

OPTIONS Additional size and material options available upon request.

SEAL COLORS



Beige



White



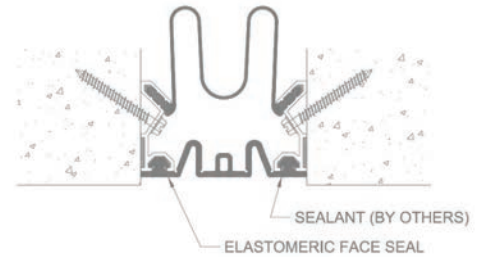
Gray



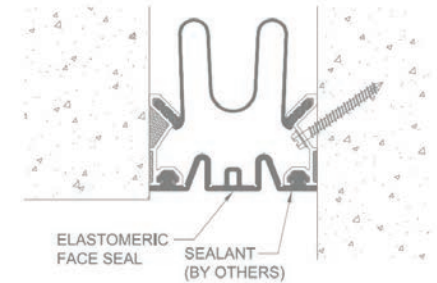
Black

INSTALLATION

WALL/CEILING-TO-WALL/CEILING



WALL/CEILING-TO-CORNER



For more information, download our Installation and Operating Manuals (IOM) and Shop Drawings on Nystrom.com

ORDER GUIDE

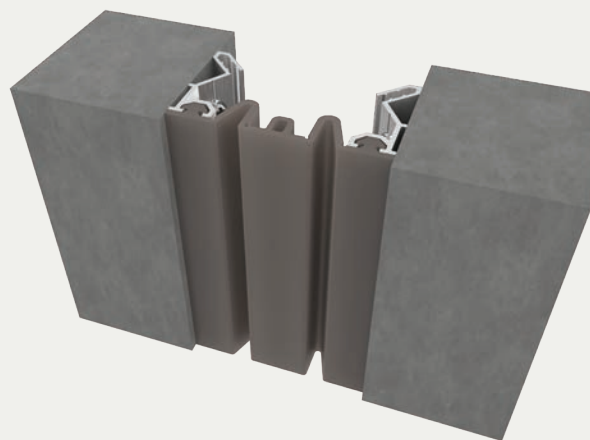
MODEL	APPLICATION	JOINT SIZE AT MEAN T°F	EXPOSED SIGHT LINE	TOTAL MOVEMENT
EJN-EWN-200	Wall/Ceiling to Wall/Ceiling	2" (51mm)	2" (51mm)	2" (51mm)
EJN-EWN-300	Wall/Ceiling to Wall/Ceiling	3" (76mm)	3" (76mm)	3" (76mm)
EJN-EWN-400	Wall/Ceiling to Wall/Ceiling	4" (102mm)	4" (102mm)	4" (102mm)
EJN-EWN-500	Wall/Ceiling to Wall/Ceiling	5" (127mm)	5" (127mm)	5" (127mm)
EJN-EWN-600	Wall/Ceiling to Wall/Ceiling	6" (152mm)	6" (152mm)	6" (152mm)
EJN-EWN-800	Wall/Ceiling to Wall/Ceiling	8" (203mm)	8" (203mm)	8" (203mm)
EJN-EWN-900	Wall/Ceiling to Wall/Ceiling	9" (229mm)	9" (229mm)	9" (229mm)
EJN-EWN-1000	Wall/Ceiling to Wall/Ceiling	10" (254mm)	10" (254mm)	10" (254mm)
EJN-EWN-1200	Wall/Ceiling to Wall/Ceiling	12" (305mm)	12" (305mm)	12" (305mm)

MODEL	APPLICATION	JOINT SIZE AT MEAN T°F	EXPOSED SIGHT LINE	TOTAL MOVEMENT
EJN-EWN-1500	Wall/Ceiling to Wall/Ceiling	15" (381mm)	15" (381mm)	15" (381mm)
EJN-EWN-1600	Wall/Ceiling to Wall/Ceiling	16" (406mm)	16" (406mm)	16" (406mm)
EJN-EWN-1800	Wall/Ceiling to Wall/Ceiling	18" (457mm)	18" (457mm)	18" (457mm)
EJN-EWN-2000	Wall/Ceiling to Wall/Ceiling	20" (508mm)	20" (508mm)	20" (508mm)
EJN-EWN-2400	Wall/Ceiling to Wall/Ceiling	24" (610mm)	24" (610mm)	24" (610mm)
EJN-EWN-200W	Wall/Ceiling to Corner	2" (51mm)	2" (51mm)	2" (51mm)
EJN-EWN-300W	Wall/Ceiling to Corner	3" (76mm)	3" (76mm)	3" (76mm)
EJN-EWN-400W	Wall/Ceiling to Corner	4" (102mm)	4" (102mm)	4" (102mm)

Additional options available, email info@nystrom.com for more information.

Seismic Elastomeric Wall & Ceiling System

INTERIOR RECESSED APPLICATION (LCH/LCHw)



BENEFITS

MAXIMUM MOVEMENT "V" seal design allows for maximum thermal and seismic movement.

CONTINUOUS SIGHT LINE This system can be used on walls, ceilings and corners to provide seamless and continuous aesthetics.

DETAILS

MATERIAL 6063-T6 Aluminum and Santoprene Seal, Meets ASTM B209

FINISH Mill

MOVEMENT

- Thermal: Horizontal and Vertical
- Seismic: Lateral Shear

MOUNTING Recessed

JOINT SIZE 2 inches to 24 inches

SEAL LENGTH Continuous

APPLICATION Interior

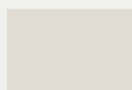
INSTALLATION Wall or Ceiling

OPTIONS Additional size and material options available upon request.

SEAL COLORS



Beige



White



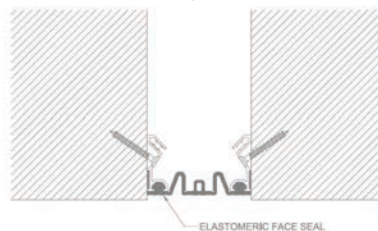
Gray



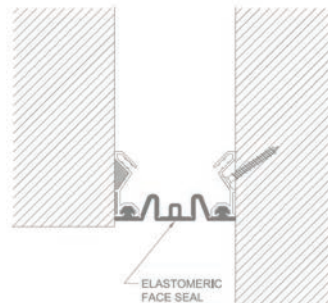
Black

INSTALLATION

WALL/CEILING-TO-WALL/CEILING



WALL/CEILING-TO-CORNER



For more information, download our Installation and Operating Manuals (IOM) and Shop Drawings on Nystrom.com

ORDER GUIDE

MODEL	APPLICATION	JOINT SIZE AT MEAN T°F	EXPOSED SIGHT LINE	TOTAL MOVEMENT
EJN-LCH-200	Wall/Ceiling to Wall/Ceiling	2" (51mm)	2" (51mm)	2" (51mm)
EJN-LCH-300	Wall/Ceiling to Wall/Ceiling	3" (76mm)	3" (76mm)	3" (76mm)
EJN-LCH-400	Wall/Ceiling to Wall/Ceiling	4" (102mm)	4" (102mm)	4" (102mm)
EJN-LCH-500	Wall/Ceiling to Wall/Ceiling	5" (127mm)	5" (127mm)	5" (127mm)
EJN-LCH-600	Wall/Ceiling to Wall/Ceiling	6" (152mm)	6" (152mm)	6" (152mm)
EJN-LCH-800	Wall/Ceiling to Wall/Ceiling	8" (203mm)	8" (203mm)	8" (203mm)
EJN-LCH-900	Wall/Ceiling to Wall/Ceiling	9" (229mm)	9" (229mm)	9" (229mm)
EJN-LCH-1000	Wall/Ceiling to Wall/Ceiling	10" (254mm)	10" (254mm)	10" (254mm)
EJN-LCH-1200	Wall/Ceiling to Wall/Ceiling	12" (305mm)	12" (305mm)	12" (305mm)

MODEL	APPLICATION	JOINT SIZE AT MEAN T°F	EXPOSED SIGHT LINE	TOTAL MOVEMENT
EJN-LCH-1500	Wall/Ceiling to Wall/Ceiling	15" (381mm)	15" (381mm)	15" (381mm)
EJN-LCH-1600	Wall/Ceiling to Wall/Ceiling	16" (406mm)	16" (406mm)	16" (406mm)
EJN-LCH-1800	Wall/Ceiling to Wall/Ceiling	18" (457mm)	18" (457mm)	18" (457mm)
EJN-LCH-2000	Wall/Ceiling to Wall/Ceiling	20" (508mm)	20" (508mm)	20" (508mm)
EJN-LCH-2400	Wall/Ceiling to Wall/Ceiling	24" (610mm)	24" (610mm)	24" (610mm)
EJN-LCH-200W	Wall/Ceiling to Corner	2" (51mm)	2" (51mm)	2" (51mm)
EJN-LCH-300W	Wall/Ceiling to Corner	3" (76mm)	3" (76mm)	3" (76mm)
EJN-LCH-400W	Wall/Ceiling to Corner	4" (102mm)	4" (102mm)	4" (102mm)

Additional options available, email info@nystrom.com for more information.

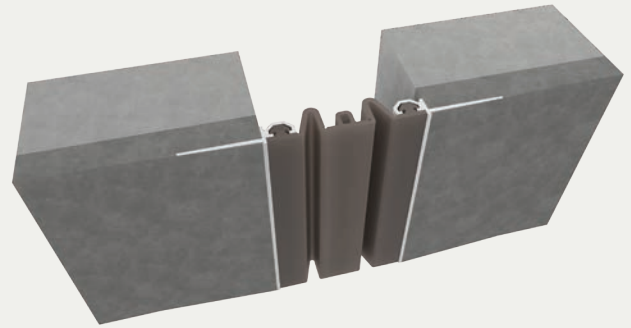
Seismic Elastomeric Corridor Wall & Ceiling System

DRYWALL BEAD APPLICATION (LCD/LCDw)

BENEFITS

MAXIMUM MOVEMENT "V" seal design allows for maximum thermal and seismic movement.

DRYWALL BEAD FLANGE Designed for drywall applications with punched holes for easy mounting. Drywall mud is floated overtop of flange and easily painted leaving only the seal exposed.



DETAILS

MATERIAL 6063-T6 Aluminum, Meets ASTM B209

FINISH Mill

MOVEMENT

- Thermal: Horizontal and Vertical
- Seismic: Lateral Shear

MOUNTING Flush with drywall bead

JOINT SIZE 2 inches to 6 inches

SEAL LENGTH Continuous

APPLICATION Interior

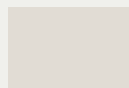
INSTALLATION Wall or Ceiling

OPTIONS Additional size and material options available upon request.

SEAL COLORS



Beige



White



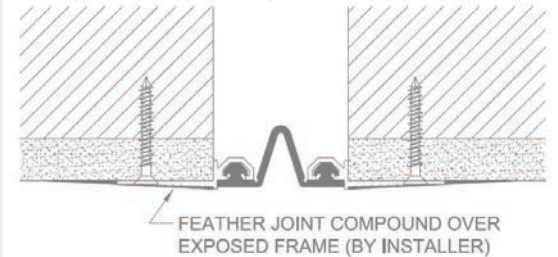
Gray



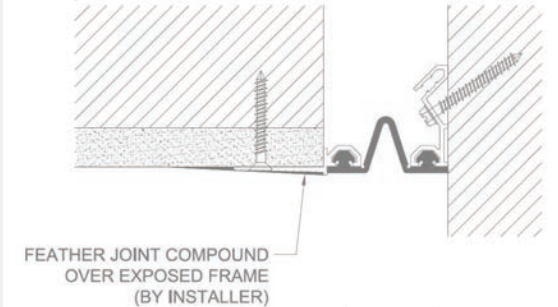
Black

INSTALLATION

WALL/CEILING-TO-WALL/CEILING



WALL/CEILING-TO-CORNER



For more information, download our Installation and Operating Manuals (IOM) and Shop Drawings on Nystrom.com

ORDER GUIDE

MODEL	APPLICATION	JOINT SIZE AT MEAN T°F	EXPOSED SIGHT LINE	TOTAL MOVEMENT
EJN-LCD-200	Wall/Ceiling to Wall/Ceiling	2" (51mm)	2" (51mm)	2" (51mm)
EJN-LCD-300	Wall/Ceiling to Wall/Ceiling	3" (76mm)	3" (76mm)	3" (76mm)
EJN-LCD-400	Wall/Ceiling to Wall/Ceiling	4" (102mm)	4" (102mm)	4" (102mm)
EJN-LCD-500	Wall/Ceiling to Wall/Ceiling	5" (127mm)	5" (127mm)	5" (127mm)
EJN-LCD-600	Wall/Ceiling to Wall/Ceiling	6" (152mm)	6" (152mm)	6" (152mm)
EJN-LCD-200W	Wall/Ceiling to Corner	2" (51mm)	2" (51mm)	2" (51mm)
EJN-LCD-300W	Wall/Ceiling to Corner	3" (76mm)	3" (76mm)	3" (76mm)
EJN-LCD-400W	Wall/Ceiling to Corner	4" (102mm)	4" (102mm)	4" (102mm)
EJN-LCD-500W	Wall/Ceiling to Corner	5" (127mm)	5" (127mm)	5" (127mm)
EJN-LCD-600W	Wall/Ceiling to Corner	6" (152mm)	6" (152mm)	6" (152mm)

Additional sizes available, email info@nystrom.com for more information.

Seismic Elastomeric Corridor wall & Ceiling System

SURFACE APPLICATION (LCS/LCSw)

BENEFITS

MAXIMUM MOVEMENT "V" seal design allows for maximum thermal and seismic movement.

CONTINUOUS SIGHT LINE This system can be used on wall, ceilings and corners to provide seamless and continuous aesthetics.



DETAILS

MATERIAL 6063-T5 Aluminum, Meets ASTM B209

FINISH Mill

MOVEMENT

- Thermal: Horizontal and Vertical
- Seismic: Lateral Shear

MOUNTING Surface

JOINT SIZE 2 inches to 6 inches

SEAL LENGTH Continuous

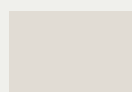
APPLICATION Interior

INSTALLATION Wall or Ceiling

SEAL COLORS



Beige



White



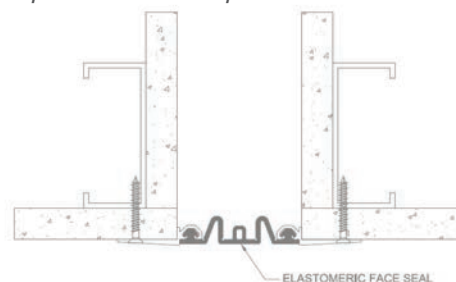
Gray



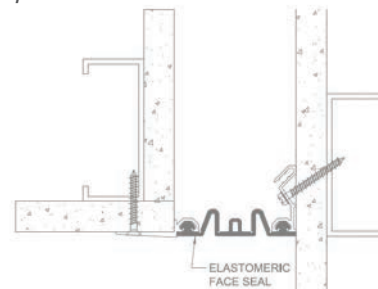
Black

INSTALLATION

WALL/CEILING-TO-WALL/CEILING



WALL/CEILING-TO-CORNER



For more information, download our Installation and Operating Manuals (IOM) and Shop Drawings on Nystrom.com

ORDER GUIDE

MODEL	APPLICATION	JOINT SIZE AT MEAN T°F	EXPOSED SIGHT LINE	TOTAL MOVEMENT
EJN-LCS-200	Wall/Ceiling to Wall/Ceiling	2" (51mm)	4.87" (124mm)	2" (51mm)
EJN-LCS-300	Wall/Ceiling to Wall/Ceiling	3" (76mm)	5.87" (149mm)	3" (76mm)
EJN-LCS-400	Wall/Ceiling to Wall/Ceiling	4" (102mm)	6.87" (175mm)	4" (102mm)
EJN-LCS-500	Wall/Ceiling to Wall/Ceiling	5" (127mm)	7.87" (200mm)	5" (127mm)
EJN-LCS-600	Wall/Ceiling to Wall/Ceiling	6" (152mm)	8.87" (226mm)	6" (152mm)
EJN-LCS-200W	Wall/Ceiling to Corner	2" (51mm)	3.5" (87mm)	2" (51mm)
EJN-LCS-300W	Wall/Ceiling to Corner	3" (76mm)	4.5" (113mm)	3" (76mm)
EJN-LCS-400W	Wall/Ceiling to Corner	4" (102mm)	5.5" (138mm)	4" (102mm)
EJN-LCS-500W	Wall/Ceiling to Corner	5" (127mm)	6.5" (164mm)	5" (127mm)
EJN-LCS-600W	Wall/Ceiling to Corner	6" (152mm)	7.5" (189mm)	6" (152mm)

Additional sizes available, email info@nystrom.com for more information.

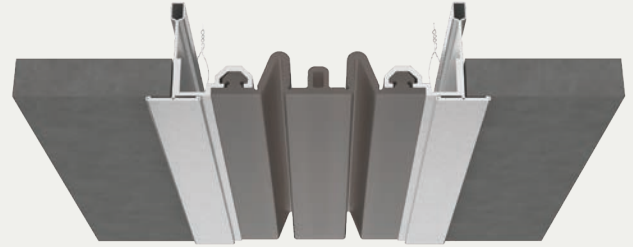
Seismic Elastomeric Corridor Ceiling System

ACOUSTICAL TILE APPLICATION (LCE/LCEw)

BENEFITS

ACOUSTIC CEILING Fully integrated with suspended ceiling grid system.

MAXIMUM MOVEMENT "V" seal design allows for maximum thermal and seismic movement.



DETAILS

MATERIAL 6063-T6 Aluminum, Meets ASTM B209

FINISH Mill

MOVEMENT

- Thermal: Horizontal and Vertical
- Seismic: Lateral Shear

MOUNTING Flush

JOINT SIZE 2 inches to 6 inches

SEAL LENGTH Continuous

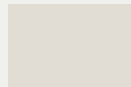
APPLICATION Interior

INSTALLATION Ceiling

SEAL COLORS



Beige



White



Gray



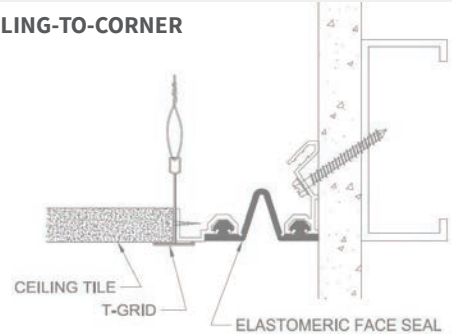
Black

INSTALLATION

CEILING-TO-CEILING



CEILING-TO-CORNER



For more information, download our Installation and Operating Manuals (IOM) and Shop Drawings on Nystrom.com

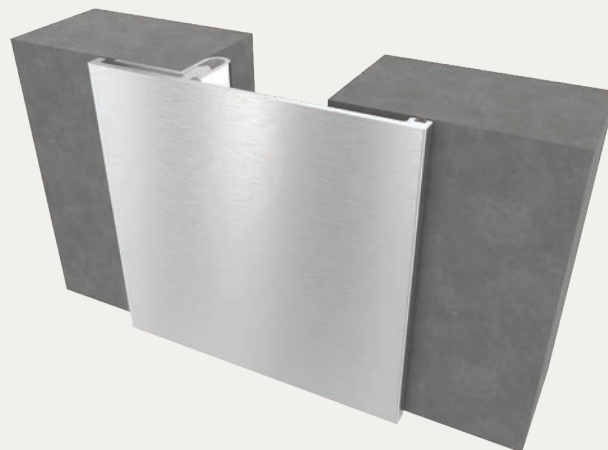
ORDER GUIDE

MODEL	APPLICATION	JOINT SIZE AT MEAN T°F	EXPOSED SIGHT LINE	TOTAL MOVEMENT
EJN-EWN-200	Wall/Ceiling to Wall/Ceiling	2" (51mm)	2" (51mm)	2" (51mm)
EJN-EWN-300	Wall/Ceiling to Wall/Ceiling	3" (76mm)	3" (76mm)	3" (76mm)
EJN-EWN-400	Wall/Ceiling to Wall/Ceiling	4" (102mm)	4" (102mm)	4" (102mm)
EJN-EWN-500	Wall/Ceiling to Wall/Ceiling	5" (127mm)	5" (127mm)	5" (127mm)
EJN-EWN-600	Wall/Ceiling to Wall/Ceiling	6" (152mm)	6" (152mm)	6" (152mm)
EJN-EWN-200W	Wall/Ceiling to Wall/Ceiling	2" (51mm)	2" (51mm)	2" (51mm)
EJN-EWN-300W	Wall/Ceiling to Wall/Ceiling	3" (76mm)	3" (76mm)	3" (76mm)
EJN-EWN-400W	Wall/Ceiling to Wall/Ceiling	4" (102mm)	4" (102mm)	4" (102mm)
EJN-EWN-500W	Wall/Ceiling to Wall/Ceiling	8" (203mm)	8" (203mm)	8" (203mm)
EJN-EWN-600W	Wall/Ceiling to Wall/Ceiling	9" (229mm)	9" (229mm)	9" (229mm)

Additional sizes available, email info@nystrom.com for more information.

Aluminum Wall & Ceiling

SURFACE SNAP-ON APPLICATION (WJ/WJw)



BENEFITS

AESTHETICS The sliding cover plate with a clear anodized finish provides a high-end appearance.

CONTINUOUS SIGHT LINE This system can be used on walls, ceilings and corners to provide seamless and continuous aesthetics.

DETAILS

MATERIAL 6063-T5 Aluminum, Meets ASTM B221

FINISH Clear Anodized

MOVEMENT Thermal: Horizontal

MOUNTING Surface

JOINT SIZE 1 inch to 4 inches

LENGTH 10 Linear Feet

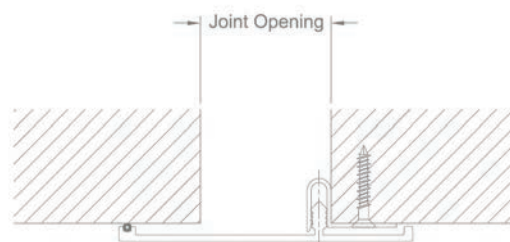
APPLICATION Interior

INSTALLATION Wall or Ceiling

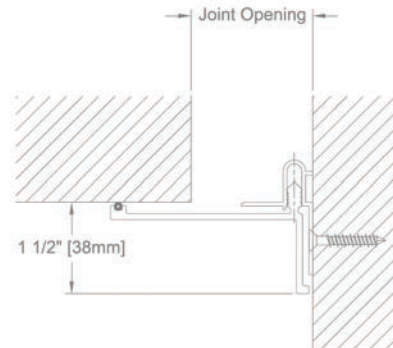
OPTIONS Moisture barrier, Fire barrier and Additional Materials, Sizes and Finishes upon request

INSTALLATION

WALL-TO-WALL



WALL/CEILING-TO-CORNER



For more information, download our Installation and Operating Manuals (IOM) and Shop Drawings on Nystrom.com

ORDER GUIDE

MODEL	APPLICATION	JOINT SIZE AT MEAN T°F	EXPOSED SIGHT LINE	TOTAL MOVEMENT
EJN-WJ-100	Wall/Ceiling to Wall/Ceiling	1" (25mm)	4.5" (114mm)	1" (25mm)
EJN-WJ-200	Wall/Ceiling to Wall/Ceiling	2" (51mm)	4.5" (114mm)	2" (51mm)
EJN-WJ-300	Wall/Ceiling to Wall/Ceiling	3" (76mm)	8.5" (216mm)	3" (76mm)
EJN-WJ-400	Wall/Ceiling to Wall/Ceiling	4" (102mm)	8.5" (216mm)	4" (102mm)
EJN-WJ-100W	Wall/Ceiling to Corner	1" (25mm)	3.312" (84mm)	1" (25mm)
EJN-WJ-200W	Wall/Ceiling to Corner	2" (51mm)	3.312" (84mm)	2" (51mm)
EJN-WJ-300W	Wall/Ceiling to Corner	3" (76mm)	6.315" (160mm)	3" (76mm)
EJN-WJ-400W	Wall/Ceiling to Corner	4" (102mm)	6.315" (160mm)	4" (102mm)

Additional sizes available, email info@nystrom.com for more information.

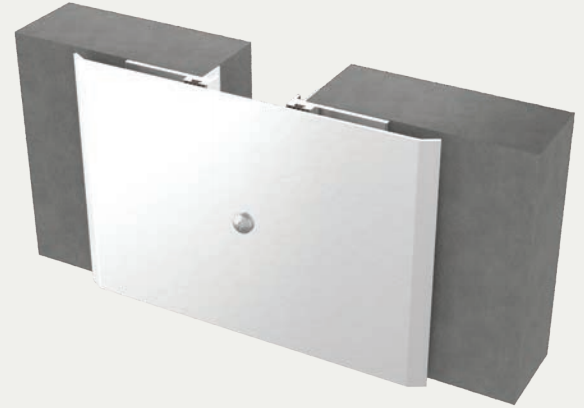
Seismic Aluminum Wall & Ceiling System

SURFACE APPLICATION (FCT/FCTw)

BENEFITS

SEISMIC CENTERING BAR System realigns itself with the self-centering bar, maintaining a finished appearance.

ARCHITECTURAL ELEGANCE The clear anodized cover plate finish provides a high-end appearance.



DETAILS

MATERIAL

6063-T5 Aluminum, Meets ASTM B221
6061-T6 Aluminum, Meets ASTM B209
5052 H32 Aluminum, Meets ASTM B209

FINISH Clear Anodized

MOVEMENT

- Thermal: Horizontal and Vertical
- Seismic: Lateral Shear

MOUNTING Surface

JOINT SIZE 2 inches to 12 inches

LENGTH 10 Linear Feet

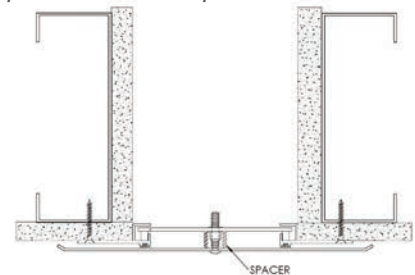
APPLICATION Interior

INSTALLATION Wall or Ceiling

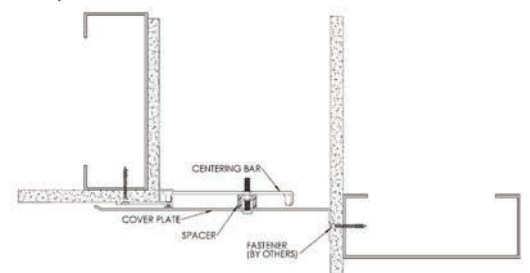
OPTIONS Moisture Barrier, Fire Barrier, and Additional Materials, Sizes and Finishes Upon Request

INSTALLATION

WALL/CEILING-TO-WALL/CEILING



WALL/CEILING TO CORNER



AS BUILT CONDITIONS MAY VARY. For more information, download our Installation and Operating Manuals (IOM) and Shop Drawings on Nystrom.com

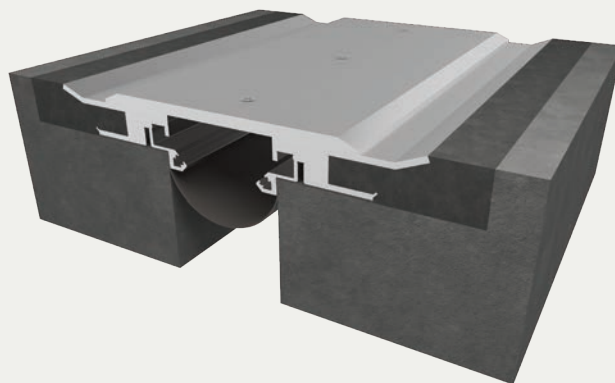
ORDER GUIDE

MODEL	APPLICATION	JOINT SIZE AT MEAN T°F	EXPOSED SIGHT LINE	TOTAL MOVEMENT
EJN-FCT-200	Wall/Ceiling to Wall/Ceiling	2" (51mm)	7" (177mm)	2" (51mm)
EJN-FCT-400	Wall/Ceiling to Wall/Ceiling	4" (102mm)	10.5" (267mm)	4" (102mm)
EJN-FCT-600	Wall/Ceiling to Wall/Ceiling	6" (152mm)	13.5" (343mm)	6" (152mm)
EJN-FCT-800	Wall/Ceiling to Wall/Ceiling	8" (203mm)	16.5" (419mm)	8" (203mm)
EJN-FCT-1000	Wall/Ceiling to Wall/Ceiling	10" (254mm)	19.5" (495mm)	10" (254mm)
EJN-FCT-1200	Wall/Ceiling to Wall/Ceiling	12" (305mm)	22.5" (572mm)	12" (305mm)
EJN-FCT-200W	Wall/Ceiling to Corner	2" (51mm)	4.5" (114mm)	1" (25mm)
EJN-FCT-400W	Wall/Ceiling to Corner	4" (102mm)	7.25" (184mm)	2" (51mm)
EJN-FCT-600W	Wall/Ceiling to Corner	6" (152mm)	9.75" (248mm)	3" (76mm)
EJN-FCT-800W	Wall/Ceiling to Corner	8" (203mm)	12.25" (311mm)	4" (102mm)
EJN-FCT-1000W	Wall/Ceiling to Corner	10" (254mm)	14.75" (375mm)	5" (127mm)
EJN-FCT-1200W	Wall/Ceiling to Corner	12" (305mm)	17.25" (438mm)	6" (152mm)

Additional options available, email info@nystrom.com for more information.

Seismic Aluminum Heavy-Duty Flooring System

RECESSED BLOCKOUT APPLICATION (PTX/PTXw)



BENEFITS

HEAVY-DUTY Engineered for wide joint openings requiring heavy loads and multi-directional movement.

FLUSH TO SURFACE Designed with a smooth transition from deck to substrate.

DETAILS

MATERIAL

- 6063-T5 and 6061-T6 Aluminum, Meets ASTM B221 and ASTM B209
- 5052-H32 Aluminum, Meets ASTM B209

FINISH Mill

MOVEMENT

- Thermal: Horizontal
- Seismic

MOUNTING Blockout

JOINT SIZE 2 inches to 12 inches

LENGTH 10 Linear Feet

APPLICATION Exterior

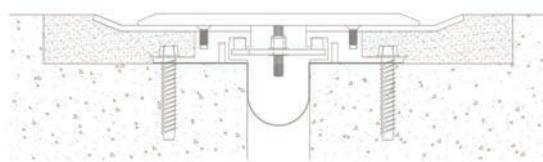
LOAD Vehicular

INSTALLATION Floor or Deck

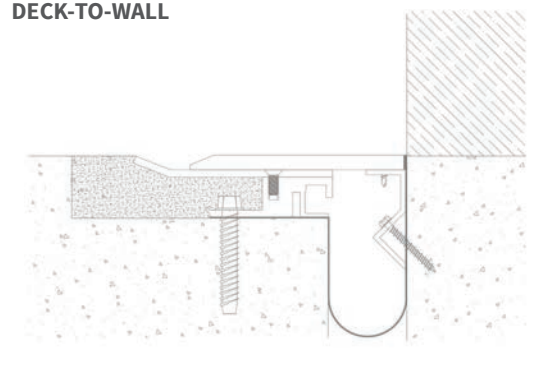
OPTIONS Fire Barrier, Additional material options available upon request.

INSTALLATION

DECK-TO-DECK



DECK-TO-WALL



For more information, download our Installation and Operating Manuals (IOM) and Shop Drawings on Nystrom.com

ORDER GUIDE

MODEL	APPLICATION	JOINT SIZE AT MEAN T°F	EXPOSED SIGHT LINE	TOTAL MOVEMENT
EJN-PTX-200	Deck to Deck	2" (51mm)	11.75" (298mm)	2" (51mm)
EJN-PTX-400	Deck to Deck	4" (102mm)	12.50" (318mm)	4" (102mm)
EJN-PTX-600	Deck to Deck	6" (152mm)	15.75" (400mm)	6" (152mm)
EJN-PTX-800	Deck to Deck	8" (203mm)	20.37" (518mm)	8" (203mm)
EJN-PTX-1000	Deck to Deck	10" (254mm)	24.50" (622mm)	10" (254mm)
EJN-PTX-1200	Deck to Deck	12" (305mm)	28.50" (724mm)	12" (305mm)
EJN-PTX-200W	Deck to Wall	2" (51mm)	6.87" (175mm)	1" (25mm)
EJN-PTX-400W	Deck to Wall	4" (102mm)	8.25" (210mm)	2" (51mm)
EJN-PTX-600W	Deck to Wall	6" (152mm)	10.87" (276mm)	3" (76mm)
EJN-PTX-800W	Deck to Wall	8" (203mm)	14.12" (359mm)	4" (102mm)
EJN-PTX-1000W	Deck to Wall	10" (254mm)	17.25" (438mm)	5" (127mm)
EJN-PTX-1200W	Deck to Wall	12" (305mm)	20.25" (514mm)	6" (152mm)

Additional options available, email info@nystrom.com for more information.

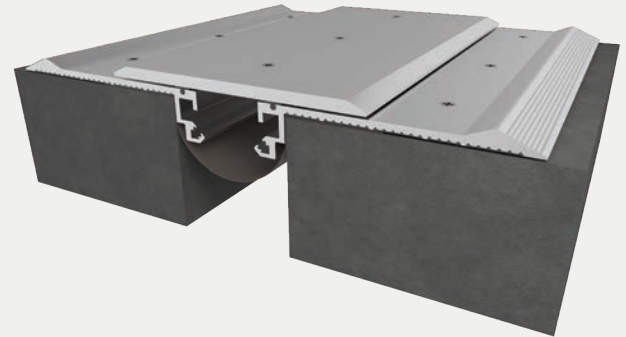
Seismic Aluminum Heavy-Duty Flooring System

SURFACE APPLICATION (PTS/PTSw)

BENEFITS

VEHICLE LOAD This heavy-duty system is designed for low speed vehicular traffic and is commonly used in parking ramps and across walkways

WATER-RESISTANT Engineered with an integrated moisture barrier for top quality water diversion with easy installation



DETAILS

MATERIAL 6063-T5 and 6061-T6 Aluminum, Meets ASTM B209 and B221

FINISH Mill

MOVEMENT

- Thermal: Horizontal
- Seismic

MOUNTING Surface

JOINT SIZE 2 inches to 12 inches

LENGTH 10 Linear Feet

APPLICATION Exterior

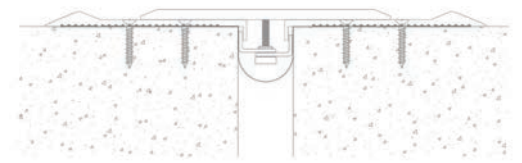
LOAD Vehicular

INSTALLATION Floor or Deck

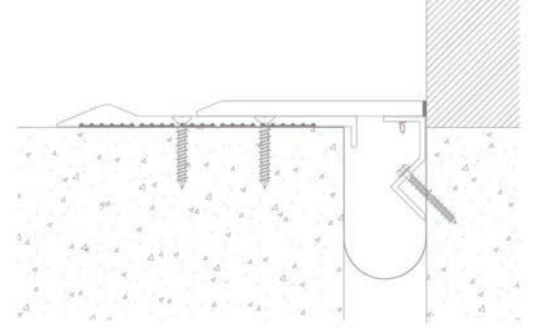
OPTIONS Fire Barrier, Additional material options available upon request.

INSTALLATION

DECK-TO-DECK



DECK-TO-WALL



For more information, download our Installation and Operating Manuals (IOM) and Shop Drawings on Nystrom.com

ORDER GUIDE

MODEL	APPLICATION	JOINT SIZE AT MEAN T°F	EXPOSED SIGHT LINE	TOTAL MOVEMENT
EJN-PTS-200	Deck to Deck	2" (51mm)	15.87" (403mm)	2" (51mm)
EJN-PTS-400	Deck to Deck	4" (102mm)	18.06" (459mm)	3.68" (93mm)
EJN-PTS-600	Deck to Deck	6" (152mm)	20.06" (510mm)	6" (152mm)
EJN-PTS-800	Deck to Deck	8" (203mm)	22.06" (560mm)	8" (203mm)
EJN-PTS-1000	Deck to Deck	10" (254mm)	24.06" (611mm)	10" (254mm)
EJN-PTS-1200	Deck to Deck	12" (305mm)	26.06" (662mm)	12" (305mm)
EJN-PTS-200W	Deck to Wall	2" (51mm)	8.94" (227mm)	1" (25mm)
EJN-PTS-400W	Deck to Wall	4" (102mm)	11.06" (280mm)	2" (51mm)
EJN-PTS-600W	Deck to Wall	6" (152mm)	13.06" (331mm)	3" (76mm)
EJN-PTS-800W	Deck to Wall	8" (203mm)	15.06" (382mm)	4" (102mm)
EJN-PTS-1000W	Deck to Wall	10" (254mm)	17.06" (433mm)	5" (127mm)
EJN-PTS-1200W	Deck to Wall	12" (305mm)	19.06" (483mm)	6" (152mm)

Additional options available, email info@nystrom.com for more information.

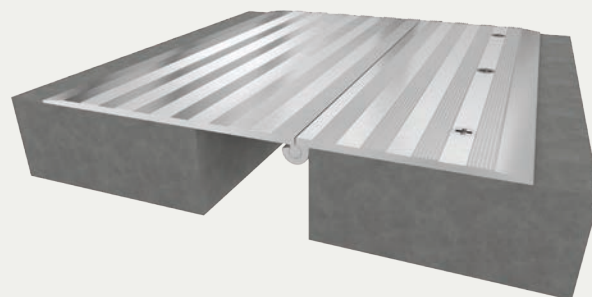
Aluminum Hinged Heavy-Duty System

SURFACE APPLICATION (PD/PDw)

BENEFITS

TRAFFIC LOAD Rated for slow vehicular traffic in parking decks, garages and ports

DURABLE Constructed with a heavy-duty, hinged cover plate with vertical movement



DETAILS

MATERIAL 6063-T6 Aluminum, Meets ASTM B209

FINISH Mill

MOVEMENT Thermal: Horizontal and Vertical

MOUNTING Surface

JOINT SIZE 2 inches to 8 inches
(8-inch system is for pedestrian traffic only)

LENGTH 10 Linear Feet

APPLICATION Interior or Exterior

LOAD Vehicle and Pedestrian

INSTALLATION Floor or Deck

OPTIONS Moisture barrier, fire barrier

INSTALLATION

FLOOR-TO-FLOOR



FLOOR-TO-WALL



For more information, download our Installation and Operating Manuals (IOM) and Shop Drawings on Nystrom.com

ORDER GUIDE

MODEL	APPLICATION	JOINT SIZE AT MEAN T°F	EXPOSED SIGHT LINE	PEDESTRIAN TOTAL MOVEMENT	VEHICLE TOTAL MOVEMENT
EJN-PD-200	Floor to Floor	2" (51mm)	8" (204mm)	2.68" (68mm)	1.67" (42mm)
EJN-PD-300	Floor to Floor	3" (76mm)	13.13" (333mm)	5.5" (139mm)	4.5" (114mm)
EJN-PD-400	Floor to Floor	4" (102mm)	16.38" (416mm)	8.75" (222mm)	7.75" (196mm)
EJN-PD-500	Floor to Floor	5" (127mm)	16.38" (416mm)	8.75" (222mm)	7.75" (196mm)
EJN-PD-600	Floor to Floor	6" (152mm)	19.75" (502mm)	10.25" (260mm)	9.25" (234mm)
EJN-PD-800	Floor to Floor	8" (203mm)	19.75" (502mm)	10.25" (260mm)	Pedestrian Only
EJN-PD-200W	Floor to Wall	2" (51mm)	4" (100mm)	2.5" (63mm)	1.5" (38mm)
EJN-PD-300W	Floor to Wall	3" (76mm)	7" (178mm)	5.5" (139mm)	4.5" (114mm)
EJN-PD-400W	Floor to Wall	4" (102mm)	10.25" (260mm)	8.75" (222mm)	7.75" (196mm)
EJN-PD-500W	Floor to Wall	5" (127mm)	10.25" (260mm)	8.75" (222mm)	7.75" (196mm)

Additional options available, email info@nystrom.com for more information.

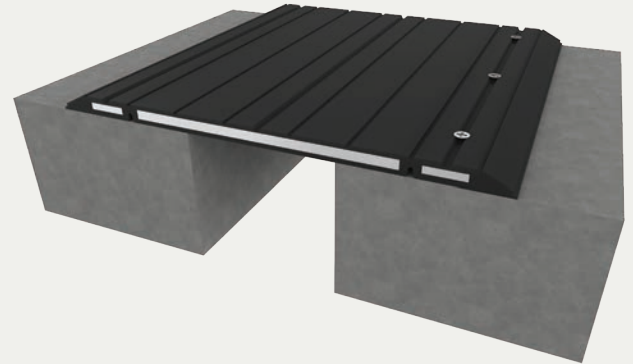
Rubber Coated Heavy Duty System, Surface Application

SURFACE APPLICATION (RCP)

BENEFITS

SOUND DAMPENER The rubber coating with tapered edges assist in reducing noise from vehicle tires.

HEAVY DUTY Designed for low speed vehicular traffic and is commonly used in parking ramps and across walkways and pedestrian traffic.



DETAILS

MATERIAL Steel, Meets ASTM A588

FINISH Rubber Coated

MOVEMENT Thermal: Horizontal and Vertical

MOUNTING Surface

JOINT SIZE 2-5/8" to 15-1/8" inches

LENGTH Varies due to model, see shop drawing for specifics

APPLICATION Exterior or Interior

LOAD Vehicle and Pedestrian

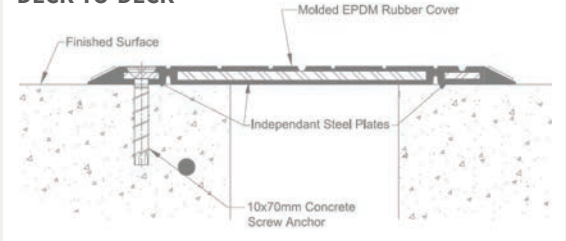
INSTALLATION Floor or deck

OPTIONS Moisture barrier, fire barrier

COMPLIANCE ADA Compliant

INSTALLATION

DECK-TO-DECK



For more information, download our Installation and Operating Manuals (IOM) and Shop Drawings on Nystrom.com

SEAL COLORS



Black



Gray

ORDER GUIDE

MODEL	APPLICATION	JOINT SIZE AT MEAN T°F	EXPOSED SIGHT LINE	SERVICE MOVEMENT
EJN-RCP-600	Deck to Deck	2.63" (67mm)	12" (305mm)	5.25" (133mm)
EJN-RCP-1000	Deck to Deck	4.88" (124mm)	18" (457mm)	9.75" (248mm)
EJN-RCP-1200	Deck to Deck	5.5" (140mm)	17.5" (445mm)	11" (279mm)
EJN-RCP-1800	Deck to Deck	8.5" (216mm)	23.5" (597mm)	17" (432mm)
EJN-RCP-2400	Deck to Deck	11.63" (295mm)	29.75" (756mm)	23.25" (591mm)
EJN-RCP-3100	Deck to Deck	15.13" (384mm)	36.75" (933mm)	30.25" (768mm)

Additional options available, email info@nystrom.com for more information.

Roof Bellow System

CURB APPLICATION (ECF/ECFw)

BENEFITS

EASY TRANSITIONS Water and weather tight factory manufactured transitions available

FLANGE STYLE Galvanized steel flange also available in copper, stainless steel and aluminum



DETAILS

MATERIAL 60-mil EPDM Bellows with Metal Flanges

MOVEMENT

- Thermal: Horizontal and Vertical
- Seismic: Lateral Shear

MOUNTING Surface

JOINT SIZE 1 Inch to 20 Inches

LENGTH 10 Linear Feet (Open Carton Fees may apply)

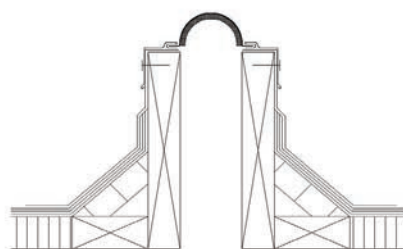
APPLICATION Exterior

INSTALLATION Roof

OPTIONS Additional sizes and material options available upon request

INSTALLATION

ECF



ECFw



For more information, download our Installation and Operating Manuals (IOM) and Shop Drawings on Nystrom.com

ORDER GUIDE

MODEL	APPLICATION	JOINT SIZE AT MEAN T°F	TOTAL MOVEMENT	MODEL	APPLICATION	JOINT SIZE AT MEAN T°F	TOTAL MOVEMENT
EJN-ECF-100	Roof to Roof	1" (25mm)	1" (25mm)	EJN-ECF-100W	Roof to Wall	1" (25mm)	1" (25mm)
EJN-ECF-200	Roof to Roof	2" (51mm)	2" (51mm)	EJN-ECF-200W	Roof to Wall	2" (51mm)	2" (51mm)
EJN-ECF-300	Roof to Roof	3" (76mm)	3" (76mm)	EJN-ECF-300W	Roof to Wall	3" (76mm)	3" (76mm)
EJN-ECF-400	Roof to Roof	4" (102mm)	4" (102mm)	EJN-ECF-400W	Roof to Wall	4" (102mm)	4" (102mm)
EJN-ECF-500	Roof to Roof	5" (127mm)	5" (127mm)	EJN-ECF-500W	Roof to Wall	5" (127mm)	5" (127mm)
EJN-ECF-600	Roof to Roof	6" (152mm)	6" (152mm)	EJN-ECF-600W	Roof to Wall	6" (152mm)	6" (152mm)
EJN-ECF-700	Roof to Roof	7" (178mm)	7" (178mm)	EJN-ECF-700W	Roof to Wall	7" (178mm)	7" (178mm)
EJN-ECF-800	Roof to Roof	8" (203mm)	8" (203mm)	EJN-ECF-800W	Roof to Wall	8" (203mm)	8" (203mm)
EJN-ECF-1000	Roof to Roof	10" (254mm)	10" (254mm)	EJN-ECF-1000W	Roof to Wall	10" (254mm)	10" (254mm)
EJN-ECF-1200	Roof to Roof	12" (305mm)	12" (305mm)	EJN-ECF-1200W	Roof to Wall	12" (305mm)	12" (305mm)
EJN-ECF-1400	Roof to Roof	14" (356mm)	14" (356mm)	EJN-ECF-1400W	Roof to Wall	14" (356mm)	14" (356mm)
EJN-ECF-1600	Roof to Roof	16" (406mm)	16" (406mm)	EJN-ECF-1600W	Roof to Wall	16" (406mm)	16" (406mm)
EJN-ECF-1800	Roof to Roof	18" (457mm)	18" (457mm)	EJN-ECF-1800W	Roof to Wall	18" (457mm)	18" (457mm)
EJN-ECF-2000	Roof to Roof	20" (508mm)	20" (508mm)	EJN-ECF-2000W	Roof to Wall	20" (508mm)	20" (508mm)

Additional options available, email info@nystrom.com for more information.

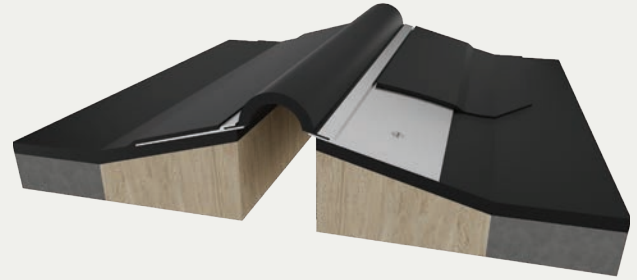
Roof Bellow System

CANT APPLICATION (EEJ/EEJw)

BENEFITS

EASY TRANSITIONS Water and weathertight factory manufactured transitions available.

FLANGE STYLE Galvanized steel flange also available in copper, stainless steel and aluminum.



DETAILS

MATERIAL 60-mil EPDM Bellows with Metal Flanges

MOVEMENT

- Thermal: Horizontal and Vertical
- Seismic: Lateral Shear

MOUNTING Surface

JOINT SIZE 1 inch to 20 Inches

LENGTH

10 Linear Feet Increments Available (Open Carton Fees may apply)

50 Linear Feet (8 inch bellow or less only)

100 Linear Feet (8 inch bellow or less only – available upon request)

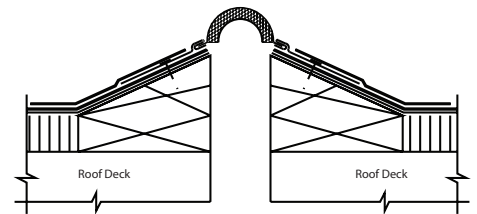
APPLICATION Exterior

INSTALLATION Roof

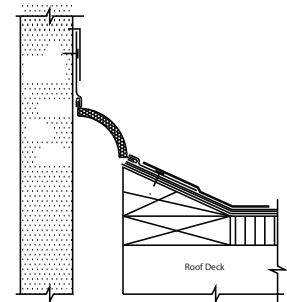
OPTIONS Additional size and material options available upon request

INSTALLATION

EEJ



EEJw



For more information, download our Installation and Operating Manuals (IOM) and Shop Drawings on Nystrom.com

ORDER GUIDE

MODEL	APPLICATION	JOINT SIZE AT MEAN T°F	TOTAL MOVEMENT	MODEL	APPLICATION	JOINT SIZE AT MEAN T°F	TOTAL MOVEMENT
EJN-EEJ-100	Roof to Roof	1" (25mm)	1" (25mm)	EJN-EEJ-100W	Roof to Wall	1" (25mm)	1" (25mm)
EJN-EEJ-200	Roof to Roof	2" (51mm)	2" (51mm)	EJN-EEJ-200W	Roof to Wall	2" (51mm)	2" (51mm)
EJN-EEJ-300	Roof to Roof	3" (76mm)	3" (76mm)	EJN-EEJ-300W	Roof to Wall	3" (76mm)	3" (76mm)
EJN-EEJ-400	Roof to Roof	4" (102mm)	4" (102mm)	EJN-EEJ-400W	Roof to Wall	4" (102mm)	4" (102mm)
EJN-EEJ-500	Roof to Roof	5" (127mm)	5" (127mm)	EJN-EEJ-500W	Roof to Wall	5" (127mm)	5" (127mm)
EJN-EEJ-600	Roof to Roof	6" (152mm)	6" (152mm)	EJN-EEJ-600W	Roof to Wall	6" (152mm)	6" (152mm)
EJN-EEJ-700	Roof to Roof	7" (178mm)	7" (178mm)	EJN-EEJ-700W	Roof to Wall	7" (178mm)	7" (178mm)
EJN-EEJ-800	Roof to Roof	8" (203mm)	8" (203mm)	EJN-EEJ-800W	Roof to Wall	8" (203mm)	8" (203mm)
EJN-EEJ-1000	Roof to Roof	10" (254mm)	10" (254mm)	EJN-EEJ-1000W	Roof to Wall	10" (254mm)	10" (254mm)
EJN-EEJ-1200	Roof to Roof	12" (305mm)	12" (305mm)	EJN-EEJ-1200W	Roof to Wall	12" (305mm)	12" (305mm)
EJN-EEJ-1400	Roof to Roof	14" (356mm)	14" (356mm)	EJN-EEJ-1400W	Roof to Wall	14" (356mm)	14" (356mm)
EJN-EEJ-1600	Roof to Roof	16" (406mm)	16" (406mm)	EJN-EEJ-1600W	Roof to Wall	16" (406mm)	16" (406mm)
EJN-EEJ-1800	Roof to Roof	18" (457mm)	18" (457mm)	EJN-EEJ-1800W	Roof to Wall	18" (457mm)	18" (457mm)
EJN-EEJ-2000	Roof to Roof	20" (508mm)	20" (508mm)	EJN-EEJ-2000W	Roof to Wall	20" (508mm)	20" (508mm)

Additional options available, email info@nystrom.com for more information.

Roof Bellow System

COVER MEMBRANE APPLICATION (EWCF/EWCFw)

BENEFITS

CUSTOM APPLICATION Designed for roof systems when wider curb widths are required.

EASY TRANSITION Water and weathertight factory manufactured transitions available.



DETAILS

MATERIAL 60-mil EPDM Membrane

MOVEMENT

- Thermal: Horizontal and Vertical
- Seismic: Lateral Shear

MOUNTING Surface

JOINT SIZE 1 inch to 20 Inches

LENGTH 50 or 100 Linear Foot Roll

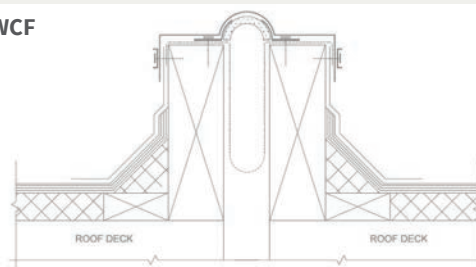
APPLICATION Exterior

INSTALLATION Roof

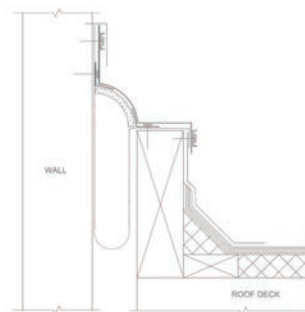
OPTIONS Additional size and material options available upon request

INSTALLATION

EWCF



EWCFw



For more information, download our Installation and Operating Manuals (IOM) and Shop Drawings on Nystrom.com

ORDER GUIDE

MODEL	APPLICATION	JOINT SIZE AT MEAN T°F	TOTAL MOVEMENT	MODEL	APPLICATION	JOINT SIZE AT MEAN T°F	TOTAL MOVEMENT
EJN-EWCF-100	Roof to Roof	1" (25mm)	1" (25mm)	EJN-EWCF-100W	Roof to Wall	1" (25mm)	1" (25mm)
EJN-EWCF-200	Roof to Roof	2" (51mm)	2" (51mm)	EJN-EWCF-200W	Roof to Wall	2" (51mm)	2" (51mm)
EJN-EWCF-300	Roof to Roof	3" (76mm)	3" (76mm)	EJN-EWCF-300W	Roof to Wall	3" (76mm)	3" (76mm)
EJN-EWCF-400	Roof to Roof	4" (102mm)	4" (102mm)	EJN-EWCF-400W	Roof to Wall	4" (102mm)	4" (102mm)
EJN-EWCF-500	Roof to Roof	5" (127mm)	5" (127mm)	EJN-EWCF-500W	Roof to Wall	5" (127mm)	5" (127mm)
EJN-EWCF-600	Roof to Roof	6" (152mm)	6" (152mm)	EJN-EWCF-600W	Roof to Wall	6" (152mm)	6" (152mm)
EJN-EWCF-700	Roof to Roof	7" (178mm)	7" (178mm)	EJN-EWCF-700W	Roof to Wall	7" (178mm)	7" (178mm)
EJN-EWCF-800	Roof to Roof	8" (203mm)	8" (203mm)	EJN-EWCF-800W	Roof to Wall	8" (203mm)	8" (203mm)
EJN-EWCF-1000	Roof to Roof	10" (254mm)	10" (254mm)	EJN-EWCF-1000W	Roof to Wall	10" (254mm)	10" (254mm)
EJN-EWCF-1200	Roof to Roof	12" (305mm)	12" (305mm)	EJN-EWCF-1200W	Roof to Wall	12" (305mm)	12" (305mm)
EJN-EWCF-1400	Roof to Roof	14" (356mm)	14" (356mm)	EJN-EWCF-1400W	Roof to Wall	14" (356mm)	14" (356mm)
EJN-EWCF-1600	Roof to Roof	16" (406mm)	16" (406mm)	EJN-EWCF-1600W	Roof to Wall	16" (406mm)	16" (406mm)
EJN-EWCF-1800	Roof to Roof	18" (457mm)	18" (457mm)	EJN-EWCF-1800W	Roof to Wall	18" (457mm)	18" (457mm)
EJN-EWCF-2000	Roof to Roof	20" (508mm)	20" (508mm)	EJN-EWCF-2000W	Roof to Wall	20" (508mm)	20" (508mm)

Additional options available, email info@nystrom.com for more information.

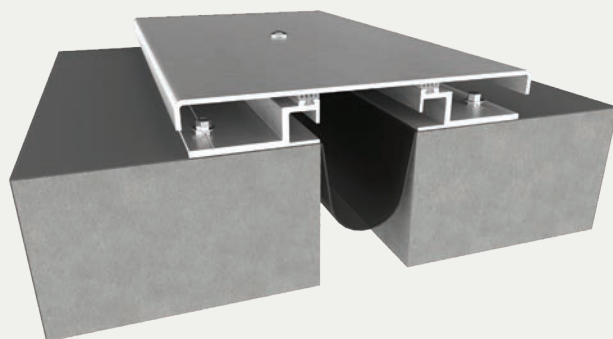
Seismic Aluminum Roof System

CURB APPLICATION (RJS/RJSw)

BENEFITS

SEISMIC MOVEMENT Designed with a seismic self-centering bar to keep the joint opening covered during a movement cycle providing a safe and clean appearance.

WEATHER RESISTANT Engineered with an integrated moisture barrier for top quality water diversion with easy installation.



DETAILS

MATERIAL Aluminum 6061

FINISH Mill

MOVEMENT

- Thermal: Horizontal and Vertical
- Seismic: Lateral Shear

MOUNTING Surface

JOINT SIZE 2 Inches to 12 Inches

LENGTH 10 Linear Feet

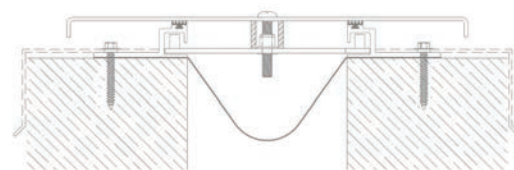
APPLICATION Exterior

INSTALLATION Roof

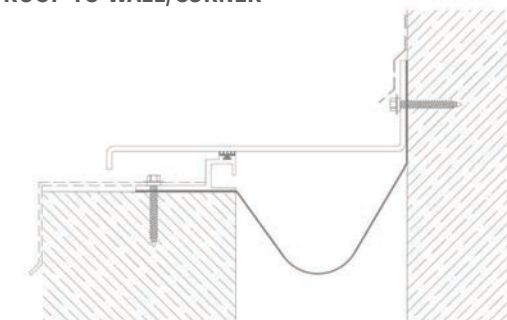
OPTIONS Fire Barrier, additional materials, sizes, and finishes upon request

INSTALLATION

ROOF-TO-ROOF



ROOF-TO-WALL/CORNER



For more information, download our Installation and Operating Manuals (IOM) and Shop Drawings on Nystrom.com

ORDER GUIDE

MODEL	APPLICATION	JOINT SIZE AT MEAN T°F	EXPOSED SIGHT LINE	TOTAL MOVEMENT
EJN-RJS-200	Roof to Roof	2" (51mm)	7" (178mm)	2" (51mm)
EJN-RJS-400	Roof to Roof	4" (102mm)	10" (255mm)	4" (102mm)
EJN-RJS-600	Roof to Roof	6" (152mm)	12" (305mm)	6" (152mm)
EJN-RJS-800	Roof to Roof	8" (203mm)	14" (356mm)	8" (203mm)
EJN-RJS-1000	Roof to Roof	10" (254mm)	17" (432mm)	10" (254mm)
EJN-RJS-1200	Roof to Roof	12" (305mm)	20" (508mm)	12" (305mm)
EJN-RJS-200W	Roof to Wall Corner	2" (51mm)	4.5" (114mm)	1" (25mm)
EJN-RJS-400W	Roof to Wall Corner	4" (102mm)	7" (178mm)	2" (51mm)
EJN-RJS-600W	Roof to Wall Corner	6" (152mm)	9" (228mm)	3" (76mm)
EJN-RJS-800W	Roof to Wall Corner	8" (203mm)	11" (280mm)	4" (102mm)
EJN-RJS-1000W	Roof to Wall Corner	10" (254mm)	13.5" (343mm)	5" (127mm)
EJN-RJS-1200W	Roof to Wall Corner	12" (305mm)	16" (406mm)	6" (152mm)

Additional options available, email info@nystrom.com for more information.

Seismic Aluminum Roof System

CANT APPLICATION (RJF/RJFw)

BENEFITS

INTEGRATED FLASHING System includes flashing for time-saving installation over typical cant conditions.

SEISMIC MOVEMENT Designed with a self-centering bar to keep the system centered during multi-directional movement.



DETAILS

MATERIAL Aluminum 6061

FINISH Mill

MOVEMENT

- Thermal: Horizontal and Vertical
- Seismic: Lateral Shear

MOUNTING Surface

JOINT SIZE 2 Inches to 12 Inches

LENGTH 10 Linear Feet

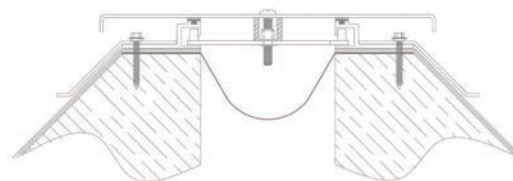
APPLICATION Exterior

INSTALLATION Roof

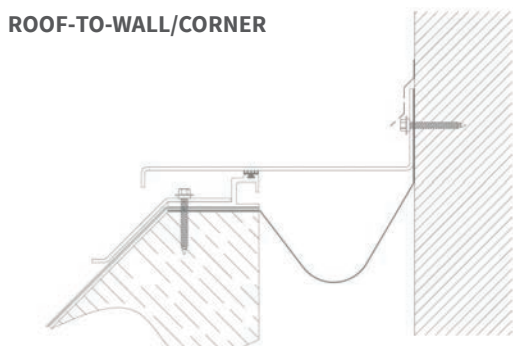
OPTIONS Fire Barrier, additional materials, sizes, and finishes upon request

INSTALLATION

ROOF-TO-ROOF



ROOF-TO-WALL/CORNER



For more information, download our Installation and Operating Manuals (IOM) and Shop Drawings on Nystrom.com

ORDER GUIDE

MODEL	APPLICATION	JOINT SIZE AT MEAN T°F	EXPOSED SIGHT LINE	TOTAL MOVEMENT
EJN-RJF-200	Roof to Roof	2" (51mm)	7"+ (178mm)	2" (51mm)
EJN-RJF-400	Roof to Roof	4" (102mm)	10"+ (255mm)	4" (102mm)
EJN-RJF-600	Roof to Roof	6" (152mm)	12"+ (305mm)	6" (152mm)
EJN-RJF-800	Roof to Roof	8" (203mm)	14"+ (356mm)	8" (203mm)
EJN-RJF-1000	Roof to Roof	10" (254mm)	17"+ (432mm)	10" (254mm)
EJN-RJF-1200	Roof to Roof	12" (305mm)	20"+ (508mm)	12" (305mm)
EJN-RJF-200W	Roof to Wall Corner	2" (51mm)	4.5"+ (114mm)	1" (25mm)
EJN-RJF-400W	Roof to Wall Corner	4" (102mm)	7"+ (178mm)	2" (51mm)
EJN-RJF-600W	Roof to Wall Corner	6" (152mm)	9"+ (228mm)	3" (76mm)
EJN-RJF-800W	Roof to Wall Corner	8" (203mm)	11"+ (280mm)	4" (102mm)
EJN-RJF-1000W	Roof to Wall Corner	10" (254mm)	13.5"+ (343mm)	5" (127mm)
EJN-RJF-1200W	Roof to Wall Corner	12" (305mm)	16"+ (406mm)	6" (152mm)

Additional options available, email info@nystrom.com for more information.

Materials



Aluminum
Mill

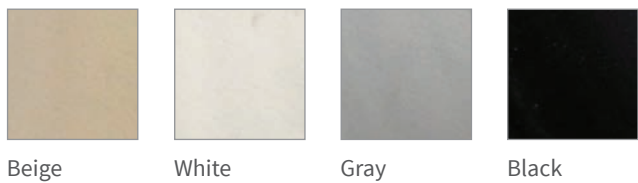
Aluminum
Clear
Anodized

Stainless Steel
Brush Finish

Brass
Brush Finish

Colors shown give only an indication of shade. Samples are available upon request.

Seal Colors



Beige

White

Gray

Black

Colors shown give only an indication of shade. Samples are available upon request.

Moisture Barriers

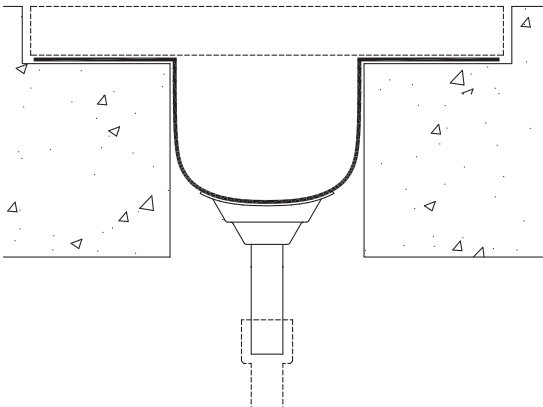
DETAILS

MATERIAL 60A Durometer Neoprene

OPTIONS Drain Tube Assembly

MODELS

MODEL	NOMINAL JOINT OPENING	ROLL SIZE	WIDTH (INCH)	THICKNESS (INCH)
21939	1"	100 Feet	7"	.062"
21940		50 Feet		
21941	2" to 3"	100 Feet	12"	
21942		50 Feet		
21943	4" to 6"	100 Feet	18"	
21944		50 Feet		
21945	7" to 10"	100 Feet	24"	
21946		50 Feet		



Expansion Joint

COMPRESSION SEALS

AN EXPANDED OFFERING

Nystrom offers a full line of expansion joint compression seals including fire-rated, security (pick-resistant), chemical resistant, sound attenuation and more to our standard pre-compressed foam line.

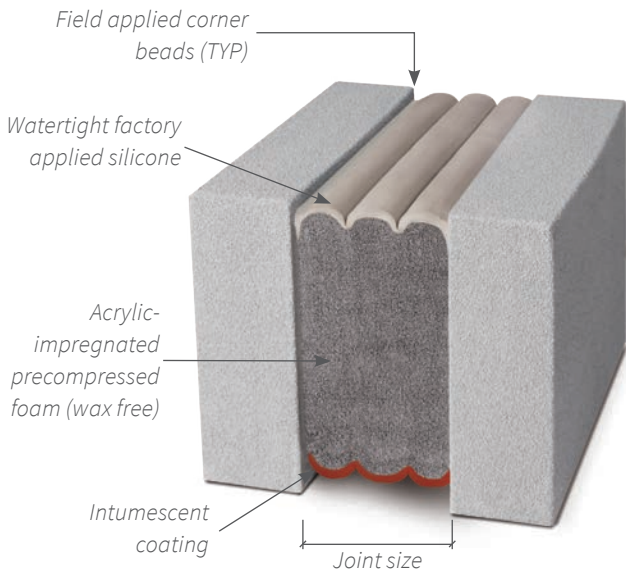
These systems are:

- WATERTIGHT**
NON-INVASIVE ANCHORING
THERMALLY INSULATING
UP TO 4X LABOR SAVINGS
- COLOR COORDINATING**
SOUND-ATTENUATING
WAX FREE
EASY-INSTALLATION

ORDER GUIDE

MODEL	JOINT SIZE	TOTAL MOVEMENT	INSTALLATION	ADDED FEATURES
SES	0.5" to 12"	100%	Wall/Ceiling	
SER	0.5" to 1.25"	80%	Wall/Floor	
HES	0.5" to 8"	100%	Floor	
PDM	0.5" to 4"	55%	Deck	
FES 2/3	0.5" to 6"	100% or 50%	Wall/Ceiling	Fire-Rated UL Labeled
FHES 2/3	0.5" to 4"	100% or 50%	Floor Deck	
PSES 2	0.5" to 6"	100%	Wall	
PHES 2/3	0.5" to 4"	100% or 50%	Floor/Deck	

Specialty Compression Seals Also Available



FOR MORE
INFORMATION



nystrom.com/products/expansion-joints/compression-seals

Visit nystrom.com for the latest version of this document and more information.



9300 73rd Avenue North
Minneapolis, MN 55428

Phone (800) 547-2635
Fax (866) 900-1959

info@nystrom.com



nystrom.com