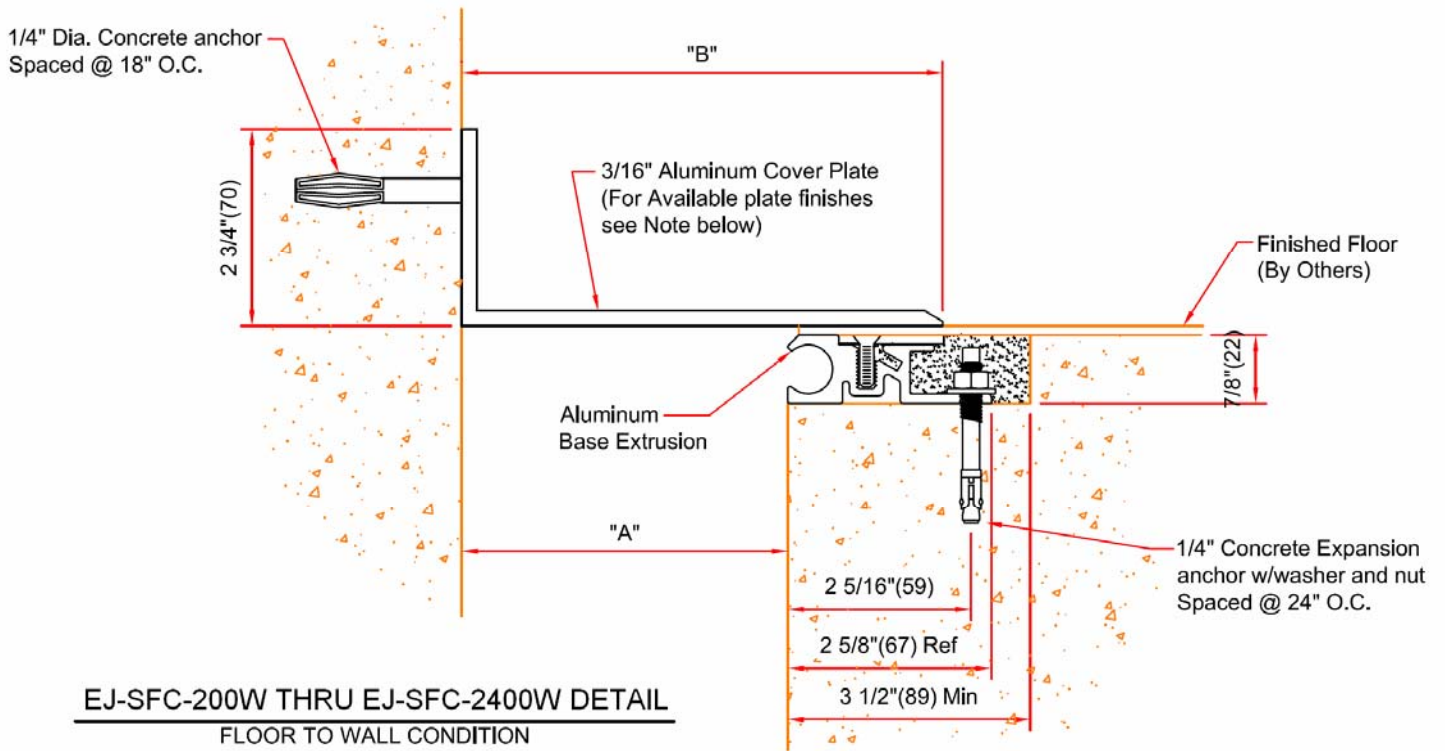
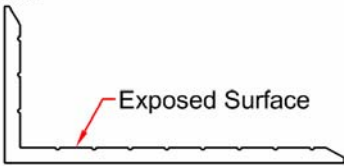


EJ-SFC-W Series

Expansion joint cover for floors Floor to Wall condition



Note:



- For openings up to 6"
 - Plate supplied with grooved surface/mill finish
- For openings Greater than 6"
 - Plate supplied with brush finish
 - Grooves optional for plates up to 24" in width
 - Grooves not available for plates over 24"

() - Denotes Millimeters

DIMENSION CHART					
Model	"A" @ Min.	"A" @ Mid	"A" @ Max.	"B"	Total Movement
-SFC-200W	1" (25)	2" (51)	2 1/2"(64)	2 3/4"(70)	1 1/2"(38)
-SFC-400W	1" (25)	4"(102)	5"(127)	5 1/4"(133)	4"(102)
-SFC-600W	1" (25)	6"(152)	7 1/2"(191)	7 3/4"(197)	6 1/2"(165)
-SFC-800W	1" (25)	8" (203)	10"(254)	10 1/4"(260)	9"(229)
-SFC-1000W	1" (25)	10"(254)	12 1/2"(317)	12 3/4"(324)	11 1/2"(292)
-SFC-1200W	1" (25)	12"(305)	15"(381)	15 1/4"(387)	14"(356)
-SFC-1800W	1" (25)	18"(457)	22 1/2"(572)	22 3/4"(578)	21 1/2"(546)
-SFC-2400W	1" (25)	24"(607)	30"(762)	30 1/4"(768)	29"(737)

Note: Minimum And Maximum Values Are After Movement Occurs. Mid Point Value Is The Recommended Size Of Opening At Installation.