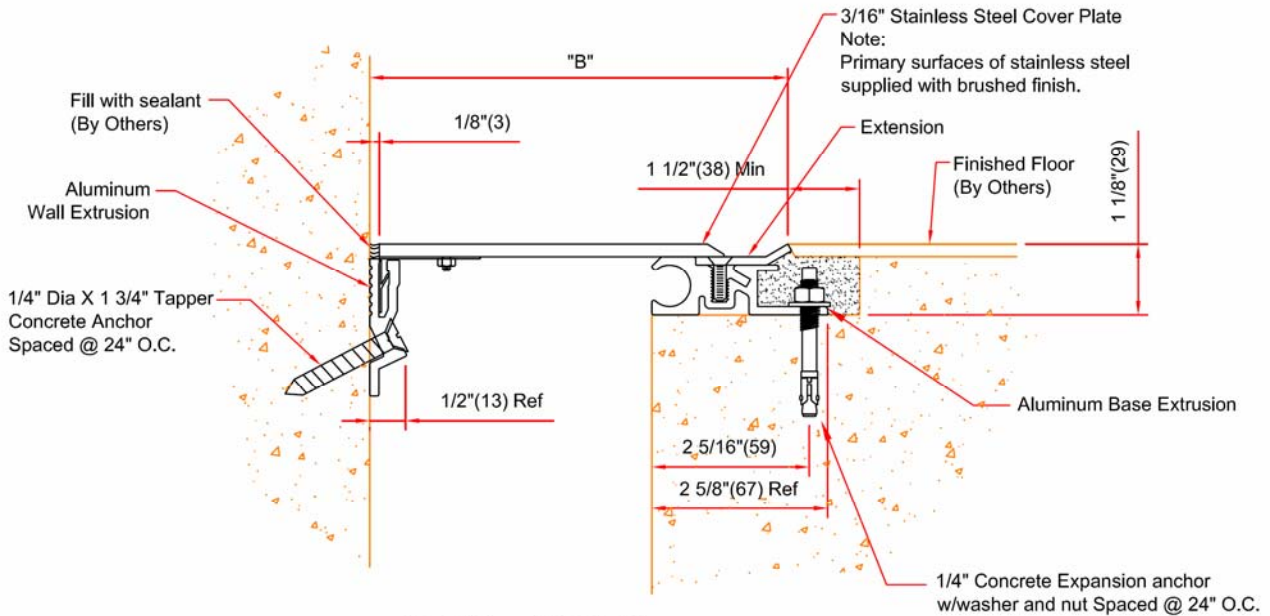


EJ-SFX-200W

Expansion joint cover for floors

Floor to wall condition, 2 inch joint opening



EJ-SFX-200W DETAIL
FLOOR TO WALL CONDITION

() - Denotes Millimeters

DIMENSION CHART					
Model	"A" @ Min.	"A" @ Mid	"A" @ Max.	"B"	Total Movement
EJ-SFX-200W	1" (25)	2" (51)	2 5/8" (67)	3 7/8" (98)	1 5/8" (41)

Note: Minimum And Maximum Values Are After Movement Occurs. Mid Point Value Is The Recommended Size Of Opening At Installation.

