



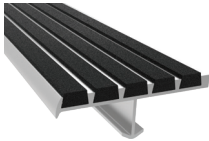
Direct Service Done Right



10 4413 + 10 4416
Fire Cabinets +
Extinguishers
Catalog

DIV
5

STAIR TREADS + NOSINGS
05 5000



FALL PROTECTION
05 5213 / 07 7200



For over 70 years Nystrom has been the go to manufacturer for specialty building products.

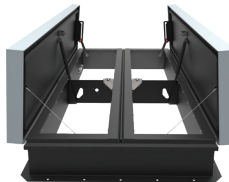
Today we provide a wide range of floor, roof and safety related access products that help create safer, more accessible buildings.

DIV
7

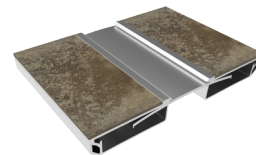
ROOF HATCHES
07 7200



SMOKE VENTS
07 7200



**PREFORMED JOINT SEALS +
EXPANSION JOINT SYSTEMS**
07 9100 + 07 9513



DIV
8

ACCESS DOORS + PANELS
08 3100



FLOOR DOORS + HATCHES
08 3483



DIV
10

**LUMINOUS EGRESS
PRODUCTS**
10 1443



**FIRE PROTECTION CABINET
+ FIRE EXTINGUISHERS**
10 4413 + 10 4416



**ENTRANCE MATS + FRAMES
ENTRANCE FLOOR GRILLES**
12 4813 + 12 4816



DIV
12



DIVISION 10 4413 + 10 4416

Fire Cabinets + Extinguishers

EXTINGUISHER CABINETS

6-9

Alpine	6
Palisade	7
Summit	8
Ridge	9

PORTABLE FIRE EXTINGUISHERS

10-11

ABC Dry Chemical	10
Kitchen Class "K"	10
Halotron 1	11
BC Dry Chemical	11
Carbon Dioxide	11

DETENTION CABINETS

12-13

Extinguisher	12
Fire Hose	12
Valve	13

FIRE BLANKET CABINETS

13

Fire Blanket	13
Wrap Around	13
Fire Blanket & Extinguisher	13

ACCESSORIES

13-15

Rain Hoods	13
Extinguisher Brackets	14
Die Cut Lettering + Labels	15

Options

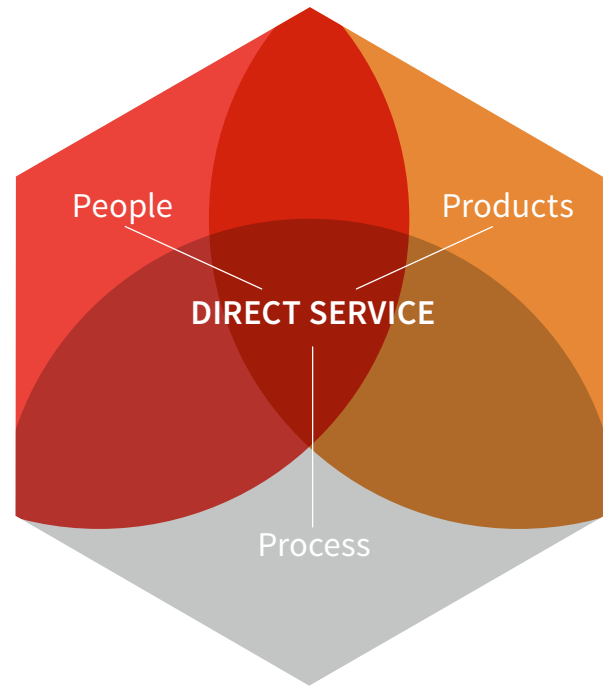
14-15

Door Style	14
Mounting	14
Handle + Lock	15
Material	15
Finish	15

Direct Service Done Right

Nystrom offers a broad line of specialty building products to better serve construction professionals and architects.

We have customer focused professionals and hassle-free processes that directly serve and simplify the building process.



PEOPLE

architects, engineers, designers, estimators, construction professionals, and service specialists

PROCESS

estimating & bid design support, tech support, logistics support, installation support, cad, revit/bim

PRODUCTS

standard & custom designs, warehousing, quality assurance, exceptional warranties, leed certification, labeling & tagging

TIME

EFFICIENCY



SPECIFICATION SUPPORT

By giving architects, designers and contractors open access to our expert team, we simplify the process of specifying and procuring access products from design through delivery and installation.

ADA + NFPA

REGULATIONS

CONSENSUS STANDARDS, REQUIREMENTS, CODES AND LAWS

The placement of fire extinguishers and fire extinguisher cabinets is driven by a group of consensus standards, requirements, codes and laws. Ultimately, where, how many, and what type, will be determined by the authority having jurisdiction for that location. The authority could be as diverse as the City Building Inspector or the Deputy Chief of Staff for Installations and Logistics.

The requirements that establish placement practice are ultimately found in local fire prevention codes at one end of the spectrum or Federal Law at the other end.

For the proper location, type and number of fire extinguishers, consult with the local authority having jurisdiction. As a general guideline, we offer the following excerpt from Occupational Safety and Health Administration - Sub Part L and from National Consensus documents:

AMERICANS WITH DISABILITIES ACT - PROTRUDING OBJECTS

The majority of fire extinguishers, when hung on a wall, protrude more than 4 inches into walks, halls, corridors, passageways or aisles. To comply with the Americans with Disabilities Act of 1990 (ADA), objects protruding from walls (fire extinguishers) with their leading edges between 27 inches and 80 inches (685 mm and 2030 mm) above the finished floor, shall protrude no more than 4 inches (100 mm) into walks, halls, corridors, passageways or aisles. Therefore, fire extinguishers that protrude more than 4 inches must be recessed into the wall.

Nystrom's fire extinguisher cabinets allow the specifier to comply with the ADA protrusion requirements, which are identified in each dimensional table found in this catalog.

*Please note the column headed ADA Compliance to specify the appropriate fire extinguisher cabinet.

FIRE EXTINGUISHER SIZE AND PLACEMENT CRITERIA (PER NFPA 10)

FOR CLASS A HAZARDS

CRITERIA	LIGHT OCCUPANCY	ORDINARY OCCUPANCY	EXTRA OCCUPANCY
Minimum Rated Single Extinguisher	2-A	2-A	4-A
Maximum Floor Area per Unit of A	3,000 sq. ft.	1,500 sq. ft.	1,000 sq. ft.
Maximum Floor Area for Extinguisher	11,250 sq. ft.	11,250 sq. ft.	11,350 sq. ft.
Maximum Travel Distance to Extinguisher	75 ft.	75 ft.	75 ft.

FOR CLASS B HAZARDS

TYPE OF HAZARD	MAXIMUM EXT'G RATING	MAXIMUM TRAVEL DISTANCE TO EXT'G
Light (Low)	5-B	30 ft.
	10-B	50 ft.
Ordinary (Moderate)	10-B	30 ft.
	20-B	50 ft.
Extra (High)	40-B	30 ft.
	80-B	50 ft.

FOR CLASS C HAZARDS

Class C ratings are required where energized electrical equipment is encountered. Since fire itself is a Class A or B hazard, the extinguishers are sized and located on the basis of the Class A or B hazard.

INSTALLATION OF FIRE EXTINGUISHERS

Portable fire extinguishers shall be securely installed on the hangers or in the bracket supplied or placed in cabinets or wall recesses. Wheeled-type extinguishers shall be in a designated location.

Extinguishers having a gross weight not exceeding 40 Lbs. shall be installed so that the top of the extinguisher is not more than 5' above the floor.

Extinguishers having a gross weight greater than 40 Lbs. shall be installed so that the top of the extinguisher is not more than 3'-6" above the floor.



Alpine

FIRE EXTINGUISHER CABINET

This Alpine Fire Extinguisher Cabinet is the industry's most popular design. Available in various door styles and mounting options to complement virtually any type of construction.

FEATURES

CONTINUOUS PIANO HINGE Built with a continuous hinge to combine aesthetics and provide sufficient support for the cabinet door operation.

SAFETY GLASS Constructed with tempered safety break glass, this cabinet will keep you safe from risk of injury in the event of an emergency.



DETAILS

MATERIAL

- Cold Rolled Steel, White Polyester Finish
- Aluminum
- Stainless Steel

DOOR Full Glass, Duo-Vertical Panel, Duo-Vertical Panel with Lock, Solid Flush Panel or Solid Flush Panel with Lock

GLAZING None, Tempered Safety Glass, 1/4 inch Wire Inserted Glass, 1/8 inch Acrylic

MOUNTING Recessed, Semi-Recessed, Surface or Trimless

SIZE Determined by the fire extinguisher size and available wall depth (see table below)

OPTIONS Lettering, Fire-Rating, Rolled Radius

MOUNTING



Trimless



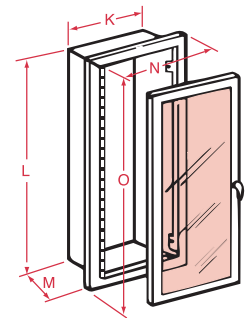
Recessed



Semi-Recessed

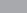


Surface



Fire Extinguisher Sold Separately

MODELS

STEEL	ALUMINUM	STAINLESS STEEL	WALL MOUNTING	TRIM T	K	BOX I.D.			FRAME O.D.			WALL OPENING			FRC OPTION				FOR USE WITH EXT'G
						L	M	N	O		W	H	D	W	H	D			
FC-7007	FC-7037	FC-7057	Recessed	1/2	9	18	5	11-3/4	20-3/4	10	19	4-3/4	11-1/4	20	5-5/8	Yes		EX-3002	
FC-7008	FC-7038	FC-7058	Semi-Recessed	2	9	18	5	11-3/4	20-3/4	10	19	3-1/4	11-1/4	20	4-1/8	Yes		EX-3005	
FC-7009	FC-7039	FC-7059	Surface	-	11-1/2	20-1/2	5-3/4	-	-	-	-	-	-	-	-	No		EX-3005-3	
FC-7010	FC-7030	FC-7050	Recessed	1/2	9	24	5	11-3/4	26-3/4	10	25	4-3/4	11-1/4	26	5-5/8	Yes		EX-3302	
FC-7012	FC-7032	FC-7052	Semi-Recessed	2	9	24	5	11-3/4	26-3/4	10	25	3-1/4	11-1/4	26	4-1/8	Yes		EX-3305	
FC-7013	FC-7033	FC-7053	Semi-Recessed	3	9	24	5	11-3/4	26-3/4	10	25	2-1/4	11-1/4	26	3-1/8	Yes		EX-3305-3	
FC-7020	FC-7040	FC-7060	Recessed	1/2	9	24	5-3/4	11-3/4	26-3/4	10	25	5-1/2	11-1/4	26	6-3/8	Yes		EX-3006	
FC-7021	FC-7041	FC-7061	Trimless	-	9	24	5-3/4	12-3/4	27-3/4	10	25	6	11-1/4	26	7-3/8	Yes		EX-3010	
FC-7022	FC-7042	FC-7062	Semi-Recessed	2	9	24	5-3/4	11-3/4	26-3/4	10	25	4	11-1/4	26	4-7/8	Yes		EX-3306	
FC-7023	FC-7043	FC-7063	Semi-Recessed	3	9	24	5-3/4	11-3/4	26-3/4	10	25	3	11-1/4	26	3-7/8	Yes		EX-3310	
FC-7024	FC-7044	FC-7064	Surface	-	11-1/2	26-1/2	5-3/4	-	-	-	-	-	-	-	-	No		EX-3405	
FC-7025	FC-7045	FC-7065	Recessed	1/2	12	27	8	14-3/4	29-3/4	13	28	7-3/4	14-1/4	29	8-5/8	Yes		EX-3020	
FC-7026	FC-7046	FC-7066	Trimless	-	12	27	8	15-3/4	30-3/4	13	28	8-1/4	14-1/4	29	9-5/8	Yes		EX-3202	
FC-7027	FC-7047	FC-7067	Semi-Recessed	3	12	27	8	14-3/4	29-3/4	13	28	5-1/4	14-1/4	29	6-1/8	Yes		EX-3320	
FC-7028	FC-7048	FC-7068	Semi-Recessed	5	12	27	8	14-3/4	29-3/4	13	28	3-1/4	14-1/4	29	4-1/8	No		EX-3320	
FC-7029	FC-7049	FC-7069	Surface	-	14-5/8	29-3/8	8	-	-	-	-	-	-	-	-	No		EX-3410	



Palisade

FIRE EXTINGUISHER CABINET

Palisade Fire Extinguisher Cabinets feature the ultra-clean, contemporary look of a full acrylic door, available in five eye-pleasing panel colors. In addition, a host of letter colors and placement options make it easier than ever to specify a truly modern, durable and functional fire extinguisher cabinet.

FEATURES

PUSH LATCH HANDLE Designed for the door to safely open and close with the use of a magnet. No need to turn a handle... simply push and latch.

GRAVITY PIVOT HINGE The door is constructed with the hinges at the top and bottom of the door so that it will swing freely.

DETAILS

MATERIAL

- Cold Rolled Steel, White Polyester Finish
- Aluminum
- Stainless Steel

DOOR Full Acrylic or Full Acrylic with Scored Insert

GLAZING Clear, White, Smoke or Red

MOUNTING Recessed, Semi-Recessed, Surface or Trimless

SIZE Determined by the fire extinguisher size and available wall depth (see table below)

OPTIONS Lettering, Fire-Rating, Rolled Radius

MOUNTING



Trimless



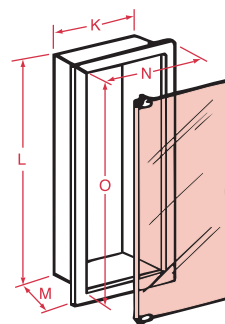
Recessed



Semi-Recessed



Surface



Fire Extinguisher Sold Separately

MODELS

STEEL	ALUMINUM	STAINLESS STEEL	WALL MOUNTING	TRIM T	K	BOX I.D. L	M	FRAME O.D. N	O	W	H	D	W	H	D	ADA	FOR USE WITH EXT'G
FC-7107	FC-7137	FC-7157	Recessed	1/2	9	18	5	11-3/4	20-3/4	10	19	4-3/4	11-1/4	20	5-5/8	Yes	EX-3002
FC-7108	FC-7138	FC-7158	Semi-Recessed	2	9	18	5	11-3/4	20-3/4	10	19	3-1/4	11-1/4	20	4-1/8	Yes	EX-3005
FC-7109	FC-7139	FC-7159	Surface	-	11-1/2	20-1/2	5-3/4	-	-	-	-	-	-	-	-	No	EX-3005-3
FC-7110	FC-7130	FC-7150	Recessed	1/2	9	24	5	11-3/4	26-3/4	10	25	4-3/4	11-1/4	26	5-5/8	Yes	EX-3302
FC-7112	FC-7132	FC-7152	Semi-Recessed	2	9	24	5	11-3/4	26-3/4	10	25	3-1/4	11-1/4	26	4-1/8	Yes	EX-3305
FC-7113	FC-7133	FC-7153	Semi-Recessed	3	9	24	5	11-3/4	26-3/4	10	25	2-1/4	11-1/4	26	3-1/8	Yes	EX-3305-3
FC-7120	FC-7140	FC-7160	Recessed	1/2	9	24	5-3/4	11-3/4	26-3/4	10	25	5-1/2	11-1/4	26	6-3/8	Yes	EX-3006
FC-7121	FC-7141	FC-7161	Trimless	-	9	24	5-3/4	12-3/4	27-3/4	10	25	6-1/2	11-1/4	26	7-3/8	Yes	EX-3010
FC-7122	FC-7142	FC-7162	Semi-Recessed	2	9	24	5-3/4	11-3/4	26-3/4	10	25	4	11-1/4	26	4-7/8	Yes	EX-3306
FC-7123	FC-7143	FC-7163	Semi-Recessed	3	9	24	5-3/4	11-3/4	26-3/4	10	25	3	11-1/4	26	3-7/8	Yes	EX-3310
FC-7124	FC-7144	FC-7164	Surface	-	11-1/2	26-1/2	5-3/4	-	-	-	-	-	-	-	-	No	EX-3405
FC-7125	FC-7145	FC-7165	Recessed	1/2	12	27	8	14-3/4	29-3/4	13	28	7-3/4	14-1/4	29	8-5/8	Yes	EX-3020
FC-7126	FC-7146	FC-7166	Trimless	-	12	27	8	15-3/4	30-3/4	13	28	8-3/4	14-1/4	29	9-5/8	Yes	EX-3202
FC-7127	FC-7147	FC-7167	Semi-Recessed	3	12	27	8	14-3/4	29-3/4	13	28	5-1/4	14-1/4	29	6-1/8	Yes	EX-3320
FC-7128	FC-7148	FC-7168	Semi-Recessed	5	12	27	8	14-3/4	29-3/4	13	28	3-1/4	14-1/4	29	4-1/8	No	EX-3410
FC-7129	FC-7149	FC-7169	Surface	-	14-5/8	29-3/8	8	-	-	-	-	-	-	-	-	No	

Summit

FIRE EXTINGUISHER CABINETS

The Summit Fire Extinguisher Cabinet distinguishes itself with an exceptionally refined look that's realized by concealing all handles and hinges. Depending upon door style, glazing and other options chosen, a Summit Series cabinet can be designed to effortlessly blend into its surrounding environment or be unmistakably conspicuous.

FEATURES

CONCEALED DESIGN The frameless design of the Summit series allows the cabinet to be camouflaged into the wall.

SAFETY BREAK GLASS Constructed with tempered safety break glass to protect against cuts in the event of an emergency.



DETAILS

MATERIAL

- Cold Rolled Steel, White Polyester Finish
- Aluminum
- Stainless Steel

DOOR Duo-Vertical Panel, Duo-Vertical Panel with Lock, Solid Flush Panel or Solid Flush Panel with Lock

GLAZING None, Tempered Safety Glass, 1/4 inch Wire Inserted Glass, 1/8 inch Acrylic

MOUNTING Recessed

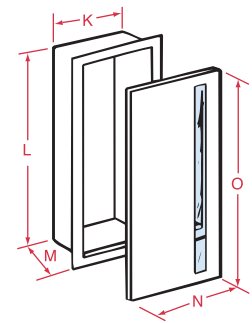
SIZE Determined by the fire extinguisher size and available wall depth (see table below)

OPTIONS Lettering, Fire-Rating

MOUNTING



Recessed



Fire Extinguisher Sold Separately

MODELS

STEEL	ALUMINUM	STAINLESS STEEL	WALL MOUNTING	TRIM T	K	BOX I.D. L	M	FRAME O.D. N	O	WALL OPENING W	H	D	FRC OPTION W	H	D	ADA	FOR USE WITH EXT'G
FC-7210	FC-7230	FC-7250	Recessed	5/8	9	18	5-3/4	11-3/4	20-3/4	10	19	6	11-1/4	20	6-7/8	Yes	EX-3002 EX-3005-3
FC-7220	FC-7240	FC-7260	Recessed	5/8	9	24	5-3/4	11-3/4	26-3/4	10	25	6	11-1/4	26	6-7/8	Yes	EX-3002 EX-3310
FC-7225	FC-7245	FC-7265	Recessed	5/8	12	27	8	14-3/4	29-3/4	13	28	8-1/4	13	28	8-1/4	Yes	EX-3202 EX-3020 EX-3410

Ridge

FIRE EXTINGUISHER CABINETS

A convex, clear plastic "bubble" window is the earmark of the Ridge Fire Extinguisher Cabinet. This ultra-practical design delivers 180° of visibility for quick identification of the extinguisher. The Ridge's shallow design is also ideal for contemporary structures with limited wall depth.

FEATURES

STYLISH BUBBLE DOOR Add 180 degrees of visibility to your fire extinguisher with the bubble window.

ACRYLIC PLEXIGLASS Constructed with durable clear, bronze or smoke colored acrylic plexiglass.

DETAILS

MATERIAL

- Cold Rolled Steel, White Polyester Finish
- Aluminum
- Stainless Steel

DOOR Full Bubble or Full Bubble with Acrylic Insert

GLAZING Clear or Smoke

MOUNTING Recessed, Semi-Recessed, Surface or Trimless

SIZE Determined by the fire extinguisher size and available wall depth (see table below)

OPTIONS Locks, glazing, lettering, Fire-Rating, Rolled Radius, Polyester finish

MOUNTING



Trimless



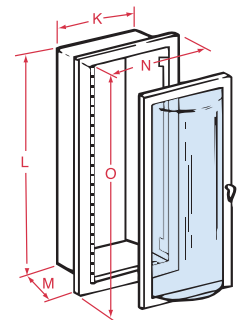
Recessed



Semi-Recessed




Surface



Fire Extinguisher Sold Separately

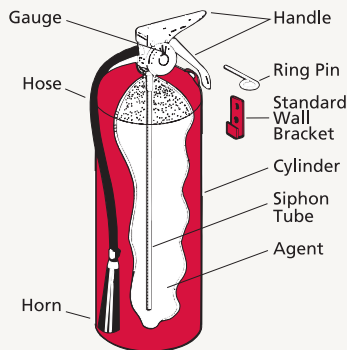
MODELS

STEEL	ALUMINUM	STAINLESS STEEL	BRASS	WALL MOUNTING	TRIM T	BOX I.D.				FRAME O.D.				WALL OPENING				FRC OPTION				 ADA	FOR USE WITH EXT'G
						K	L	M	N	O	W	H	D	W	H	D							
FC-7307	FC-7337	FC-7357	FC-7377	Recessed	½	9	18	4	11¾	20¾	10	19	3¾	11¼	20	4⅝	Yes				EX-3002 EX-3005 EX-3005-3 EX-3302 EX-3305 EX-3305-3		
FC-7308	FC-7338	FC-7358	FC-7378	Semi-Recessed	2	9	18	4	11¾	20¾	10	19	2¼	11¼	20	3⅝	No						
FC-7309	FC-7339	FC-7359	FC-7379	Surface	–	11½	20½	4	–	–	–	–	–	–	–	–	No						
FC-7320	FC-7340	FC-7360	FC-7380	Recessed	½	9	24	4	11¾	26¾	10	25	3¾	11¼	25	4⅝	Yes				EX-3002, EX-3005 EX-3005-3 EX-3006, EX-3010 EX-3302, EX-3305 EX-3305-3 EX-3306, EX-3310		
FC-7321	FC-7341	FC-7361	FC-7381	Trimless	–	9	24	4½	12¾	27¾	10	25	4¾	11¼	26	5⅝	Yes						
FC-7322	FC-7342	FC-7362	FC-7382	Semi-Recessed	2	9	24	4	11¾	26¾	10	25	2¼	11¼	26	3⅝	No						
FC-7324	FC-7344	FC-7364	FC-7384	Surface	–	11½	26½	4	–	–	–	–	–	–	–	–	No						
FC-7325	FC-7345	FC-7365	FC-7385	Recessed	½	12	27	4¾	14½	29½	13	28	4½	14¼	29	5⅝	Yes				EX-3020*		
FC-7326	FC-7346	FC-7366	FC-7386	Trimless	–	12	27	5¼	15½	30½	13	28	5½	14¼	29	6⅝	Yes				EX-3202*		
FC-7327	FC-7347	FC-7367	FC-7387	Semi-Recessed	3	12	27	4¾	14½	29½	13	28	3	14¼	29	2⅞	No				EX-3320*		
FC-7329	FC-7349	FC-7369	FC-7389	Surface	–	14½	29½	4¾	–	–	–	–	–	–	–	–	No				EX-3405		

*Add 1 inch to M & D dimensions

Fire Extinguishers

PRINCIPLES OF SELECTING EXTINGUISHERS:



TYPICAL STORED-PRESSURE FIRE EXTINGUISHER

- Type of potential fire hazard.
- Severity of potential fire hazard.
- Environmental conditions of potential fire hazard.
- Effectiveness of extinguisher on potential fire hazard.
- Training and physical capabilities of available personnel to operate extinguisher.
- Upkeep and maintenance requirements of extinguisher.

For further information, refer to NFPA 10.

FIRE CLASSIFICATIONS				
TYPE OF FIRE	Wood, paper, cloth, trash & other ordinary combustibles	Flammable liquids	Energized electric equipment	Cooking appliances w/ combustible cooking media
CLASS AND LETTER SYMBOL	A	B	C	K
PICTURE SYMBOL				
AGENTS				
MULTI-PURPOSE DRY CHEMICAL	Yes	Yes	Yes	No
KITCHEN	Yes	No	No	Yes
WATER	Yes	No	No	No
FFFP	Yes	Yes	No	No
BC DRY CHEMICAL	No	Yes	Yes	No
CARBON DIOXIDE	No	Yes	Yes	No
HALOTRON 1	Yes	Yes	Yes	No

ABC Dry Chemical FIRE EXTINGUISHERS



The ABC Multi-Purpose Dry Chemical fire extinguisher is used to provide protection against Class A, B and C fires.

FINISH Glossy red polyester coated

MOUNTING Wall bracket

DISCHARGE Nozzle or hose

AGENT BASE Ammonium Phosphate

PRESSURE 195 P.S.I.

MODEL	NOMINAL CAPACITY	UL RATING	HEIGHT	CYLINDER DIAMETER	RANGE OF STREAM	TYPE DISCHARGE
EX-3002	2-1/2 Lbs.	1A:10B:C	14-3/4"	3"	9' - 15'	Nozzle
EX-3005	5 Lbs.	2A:10B:C	15-1/4"	4-1/4"	12' - 18'	Hose
EX-3005-3	5 Lbs.	3A:40B:C	15-1/4"	4-1/4"	12' - 18'	Hose
EX-3006	6 Lbs.	3A:40B:C	16"	5"	15' - 21'	Hose
EX-3010	10 Lbs.	4A:80B:C	20"	5"	15' - 21'	Hose
EX-3020	20 Lbs.	20A:120B:C	23-1/4"	7"	15' - 21'	Hose

MOUNTING BRACKET

MODEL	FITS SIZE
EX-3901	5 Lbs.
EX-3902	6 Lbs.
EX-3903	10 Lbs.
EX-3904	20 Lbs.
EX-3909	5, 6, 10 Lbs.
EX-3910	20 Lbs.

Kitchen Class K FIRE EXTINGUISHERS



The Kitchen Class K portable fire extinguishers discharge a fine mist and help prevent grease splash and re-flash while cooling appliances. These wet chemical extinguishers are the best restaurant kitchen appliance portable fire extinguishers available and provide protection against Class K fires.

FINISH Stainless Steel

MOUNTING Wall bracket

DISCHARGE Hose

AGENT Potassium Acetate Solution

MODEL	NOMINAL CAPACITY	UL RATING	HEIGHT	CYLINDER DIAMETER	RANGE OF STREAM	TYPE DISCHARGE
EX-3260	6 ltr.	2A:K	19"	7"	10' - 12'	Hose
EX-3262	2-1/2 gal.	2A:K	24-1/2"	7"	10' - 12'	Hose

MOUNTING BRACKET

MODEL	FITS SIZE
EX-3904	2-1/2 gal.

*OPTION:
-AF Anti-freeze charge

Call for information on water mist "Clean Agent" and pressurized water/foam extinguishers.

Halotron I

FIRE EXTINGUISHERS



The Halotron 1 fire extinguisher uses an EPA approved "Clean Agent" discharged as a rapidly evaporating liquid which leaves no residue. It effectively extinguishes Class A, B and C fires by cooling and smothering and it will not conduct electricity back to the user.

FINISH Glossy red polyester coated
MOUNTING Wall bracket
DISCHARGE Nozzle or hose & nozzle
BASE AGENT HydroChloroFluoro-Carbon
PRESSURE 125 P.S.I.

MODEL	NOMINAL CAPACITY	UL RATING	HEIGHT	CYLINDER DIAMETER	RANGE OF STREAM	TYPE DISCHARGE
EX-3101	1.4 Lbs.	1B:C	10"	2-7/8"	6' - 8'	Nozzle
EX-3102	2.5 Lbs.	2B:C	15-1/2"	3"	6' - 10'	Nozzle
EX-3105	5 Lbs.	5B:C	15-1/4"	4-1/4"	9' - 15'	Nozzle

BC Dry Chemical

FIRE EXTINGUISHERS



The BC Multi-Purpose Dry Chemical fire extinguisher is used to provide protection against Class B and C fires.

FINISH Glossy red polyester coated
MOUNTING Wall bracket
DISCHARGE Nozzle or hose
AGENT BASE Sodium Bicarbonate
PRESSURE 195 P.S.I.

MODEL	NOMINAL CAPACITY	UL RATING	HEIGHT	CYLINDER DIAMETER	RANGE OF STREAM	TYPE DISCHARGE
EX-3302	2-1/2 Lbs.	10B:C	15-1/2"	3"	9' - 15'	Nozzle
EX-3305	5 Lbs.	10B:C	15-1/4"	4-1/4"	12' - 18'	Hose
EX-3305-3	5-1/2 Lbs.	40B:C	15-1/4"	4-1/4"	12' - 18'	Hose
EX-3310	10 Lbs.	60B:C	20"	5"	15' - 21'	Hose
EX-3320	20 Lbs.	120B:C	23-1/4"	7"	15' - 21'	Hose

MOUNTING BRACKET

MODEL	FITS SIZE
EX-3901	5 Lbs.
EX-3902	6 Lbs.
EX-3903	10 Lbs.
EX-3909	5, 6, 10 Lbs.
EX-3910	20 Lbs.

Carbon Dioxide

FIRE EXTINGUISHERS



The Carbon Dioxide fire extinguisher is used to provide protection against Class B and C fires. Will not contaminate or leave residue on materials which it extinguishes.

FINISH Glossy red polyester coated
MOUNTING Wall bracket
DISCHARGE Horn or hose & horn
PRESSURE 735 P.S.I.

MOUNTING BRACKET

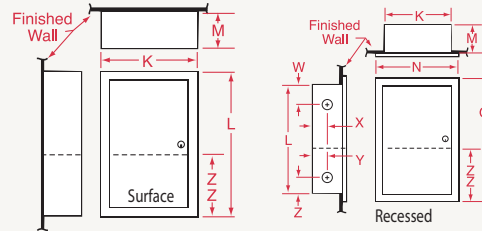
MODEL	NOMINAL CAPACITY	UL RATING	HEIGHT	CYLINDER DIAMETER	OVERALL WIDTH	RANGE OF STREAM	TYPE DISCHARGE
EX-3405	5 Lbs.	5B:C	17-3/4"	5-1/4"	8-1/4"	3' - 8'	Horn
EX-3410	10 Lbs.	10B:C	24"	7"	12"	3' - 8'	Hose & Horn
EX-3415	15 Lbs.	10B:C	30"	7"	12"	3' - 8'	Hose & Horn
EX-3420	20 Lbs.	10B:C	30"	8"	13"	3' - 8'	Hose & Horn

MODEL	FITS SIZE
EX-3903	5 Lbs.
EX-3904	10, 15 Lbs.
EX-3905	20 Lbs.
EX-3909	5 Lbs.

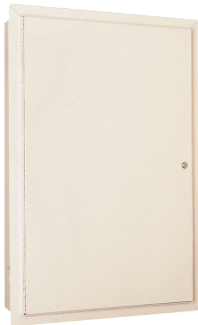
Detention + Institution Cabinets



Nystrom's Detention Series Cabinets provide the specifier with a substantial unitized design in 12 gauge cold rolled steel construction for maximum security facilities. All corners are mitered and ground smooth to eliminate any dangerous projections. The heavy-duty continuous hinge adds to the secure features of these cabinets.



Hose DETENTION CABINETS



DOOR 12 gauge Cold Rolled Steel

MOUNTING Recessed or Surface

OPTIONS Lock Prep, Lettering, Fire-Rated (2-hour), Polyester Finish

HOSE CABINET

MODEL	WALL MOUNTING	CAPACITY	BOX I.D.			FRAME O.D.			WALL OPENING			ADA	FRC
			K	L	M	N	O		W	H	D		
DC-1002	Recessed	100' Hose Unit	24	30	5-1/2	27-3/4	33-3/4		25	31	6	Yes	Yes
DC-1052	Surface		24	30	5-1/2	-	-	-	-	-	-	No	No

HOSE AND EXTINGUISHER CABINET

MODEL	WALL MOUNTING	CAPACITY	BOX I.D.			FRAME O.D.			WALL OPENING			ADA	FRC
			K	L	M	N	O		W	H	D		
DC-1302	Recessed	100' Hose Unit	30	30	8	33-3/4	33-3/4		31	31	8-1/2	Yes	Yes
DC-1352	Surface	2-1/2 gal Water Ext.	30	30	8	-	-	-	-	-	-	No	No

Extinguisher DETENTION CABINETS



DOOR 12 gauge Cold Rolled Steel

MOUNTING Recessed or Surface

OPTIONS Lock Prep, Lettering, Fire-Rated (2-hour), Polyester Finish

MODEL	WALL MOUNTING	CAPACITY	BOX I.D.			FRAME O.D.			WALL OPENING			ADA	FRC
			K	L	M	N	O		W	H	D		
DC-1704	Recessed	10 Lb. Dry Chem. Ext.	9	24	8	12-3/4	27-3/4		10	25	8-1/2	Yes	Yes
DC-1706	Recessed	2-1/2 gal. Water Ext.	12	27	8	15-3/4	30-3/4		13	28	8-1/2	Yes	Yes
DC-1754	Surface	10 Lb. Dry Chem. Ext.	9	24	8	-	-	-	-	-	-	No	No
DC-1756	Surface	2-1/2 gal. Water Ext.	12	27	8	-	-	-	-	-	-	No	No

Valve

DETENTION CABINETS



DOOR 12 gauge Cold Rolled Steel

MOUNTING Recessed or Surface

OPTIONS Lock Prep, Lettering, Fire-Rated (2-hour), Polyester Finish

VALVE CABINET

MODEL	WALL MOUNTING	CAPACITY	BOX I.D.			FRAME O.D.		WALL OPENING			ADA	FRC
			K	L	M	N	O	W	H	D		
DC-1810	Recessed	2-1/2" Angle	18	18	8	21-3/4	21-3/4	19	19	8-1/2	Yes	Yes
DC-1815	Surface	Valve	18	18	8	-	-	-	-	-	No	No

VALVE AND EXTINGUISHER CABINET

MODEL	WALL MOUNTING	CAPACITY	BOX I.D.			FRAME O.D.		WALL OPENING			SHELF Z-Z	ADA	FRC
			K	L	M	N	O	W	H	D			
DC-1870	Recessed	2-1/2" Angle Valve	14	40	8	17-3/4	43-3/4	15	41	8-1/2	12	Yes	Yes
DC-1875	Surface	2-1/2 gal. Water Ext.	14	40	8	-	-	-	-	-	12	No	No

Fire Blanket

CABINETS



BC-6601



BC-6603



BC-6605

Nystrom offers fire blanket cabinets in different styles to meet varying installation requirements. All styles of cabinets are equipped with a chemically treated fire blanket treated with fire resistant chemicals.

DOOR/BOX 20 gauge Cold Rolled Steel

FRAME 18 gauge Cold Rolled Steel

MOUNTING Recessed, Surface, Semi-recessed or trimless

OPTIONS Locks, Lettering, Fire-Rated (2-hour), Polyester Finish

FIRE BLANKET CABINET (INCLUDES BLANKET)

MODEL	WALL MOUNTING	BOX I.D.			ADA	FRC
BC-6601	Surface	15	10	5	No	No

REPLACEMENT BLANKET

MODEL	SIZE
BC-6602	62 x 80

WRAP-AROUND BLANKET CABINET (INCLUDES BLANKET)

MODEL	WALL MOUNTING	BOX I.D.			ADA	FRC
BC-6603	Surface	70-1/2	5-3/4	4-1/2	No	No

FIRE BLANKET AND EXTINGUISHER CABINET (INCLUDES BLANKET)

MODEL	WALL MOUNTING	BOX I.D.			COMPARTMENT SIZE			WALL OPENING			FOR USE WITH FIRE EXT'G	ADA	FRC
BC-6605	Recessed - 5/8	14	40	8	14	28	8	15	41	8	EX-3002, EX-3020	Yes	Yes
BC-6606	Trimless	14	40	8	14	28	8	15	41	9	EX-3002, EX-3252	Yes	Yes
BC-6607	Semi-Recessed	14	40	8	14	28	8	15	41	6	EX-3202, EX-3320	Yes	Yes
BC-6609	Surface	16	42	9-1/2	16	30	9-1/2	-	-	-	EX-3002, EX-3410	No	No

Rain Hoods



Rain hoods help shield surface mounted cabinets from weather.

MATERIAL Cold Rolled Steel

FINISH Polyester Coated

MODEL	CABINET WIDTH
OP-1927-04	11-1/4"
OP-1928-06	14-1/2"
OP-1927-70	16"
OP-1928-18	20"

Door Style

OPTIONS



-A Full Glass



-B Full Break Glass



-D Duo Panel Glass



-DV Duo Vertical Panel



-DVL Duo Vertical Panel w/Lock



-E Center Break Glass



-F Solid Flush Panel



-FS Solid Flush Panel w/lock



-FP Full Glass with Flush Pull Handle



-BA Full Bubble with Catch



-BB Full Bubble with Cylinder Lock



-A Full Acrylic Panel

Trim Style

OPTIONS



Trimless



Recessed



Semi-Recessed



Semi-Recessed with rolled radius*



Surface

*Standard on all 3" - 9" x 24" semi-recessed cabinets.

Mounting Brackets

For use with portable fire extinguishers when additional security is required due to vibration. Furnished with 16 gauge glossy polyester coated steel bracket with spring-type band and/or rubber strap.



EX-3903



EX-3901 - EX-3902



EX-3904 - EX-3908



EX-3909 - EX-3910

Handle + Lock

OPTIONS



Cam Latch*
BOP-7911



Pull Handle
BOP-1905



Fire Pull
Handle
BOP-1907



Flush Pull
Handle
BOP-1909



Lock
BOP-7912



Break Rite® Handle
BOP-BR04

*Standard option

Metal Door + Frame

OPTIONS



Steel
White Polyester
Finish



Aluminum



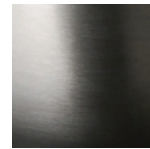
Stainless Steel

Finish

OPTIONS



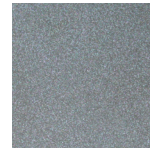
Coated Steel



Mirror Stainless
Steel



Light Duranodic
Aluminum



Medium
Duranodic
Aluminum



Dark Duranodic
Aluminum

Die Cut Lettering + Labels

**FIRE
EXTINGUISHER
AND
FIRE DEPARTMENT
VALVE**

**FIRE
DEPARTMENT
VALVE**

**FIRE
EXTINGUISHER**
IN CASE OF FIRE BREAK GLASS
AND OPEN DOOR FROM INSIDE

**FIRE
DEPT. VALVE**

**FIRE
BLANKET**

**IN CASE OF
FIRE
BREAK GLASS
AND
OPEN DOOR FROM INSIDE**



**FIRE
EXTINGUISHER**

Horizontal

**FIRE
EXTINGUISHER**

Vertical

**FIRE
EXTINGUISHER**

Vertical
Ascending

DESCRIPTION	TYPE	WHITE	BLACK	RED
Fire Extinguisher	Label	-	-	OP-1960
Fire Extinguisher (Vertical)	Label	OP-1963	OP-1962	OP-1961
Fire Extinguisher Arrow	Label	-	-	OP-1964
Fire Extinguisher In case of Fire break glass...	Label	-	-	OP-1970
In case of Fire break glass and open door from inside	Label	-	-	OP-1972
In case of Fire break glass	Label	-	-	OP-1973
Fire Department Valve	Label	-	-	OP-1980
Fire Extinguisher/Fire Dept Valve	Label	-	-	OP-1982
Fire Extinguisher (Horizontal)	Die Cut	OP-7901	OP-7902	OP-7903
Fire Extinguisher (Vertical)	Die Cut	OP-7904	OP-7905	OP-7906
Fire Extinguisher (Vertical Ascending)	Die Cut	OP-7907	OP-7908	OP-7909
Fire Department Valve	Die Cut	OP-7914	OP-7915	OP-7916
Reverse die cut lettering available by adding suffix -R				

Visit nystrom.com for the latest version of this document and more information.



9300 73rd Avenue North
Minneapolis, MN 55428

Phone (800) 547-2635
Fax (866) 900-1959

info@nystrom.com



nystrom.com