



Direct Service Done Right



08 3483
Floor Doors + Hatches
Catalog

DIV
5

STAIR TREADS + NOSINGS
05 5000



FALL PROTECTION
05 5213 / 07 7200



For over 70 years Nystrom has been the go to manufacturer for specialty building products.

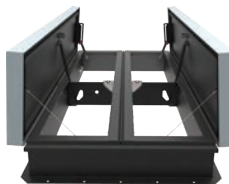
Today we provide a wide range of floor, roof and safety related access products that help create safer, more accessible buildings.

DIV
7

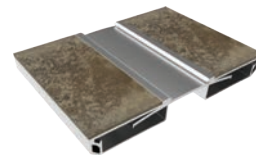
ROOF HATCHES
07 7200



SMOKE VENTS
07 7200



**PREFORMED JOINT SEALS +
EXPANSION JOINT SYSTEMS**
07 9100 + 07 9513



DIV
8

ACCESS DOORS + PANELS
08 3100



FLOOR DOORS + HATCHES
08 3483



DIV
10

**LUMINOUS EGRESS
PRODUCTS**
10 1443



**FIRE PROTECTION CABINET
+ FIRE EXTINGUISHERS**
10 4413 + 10 4416



**ENTRANCE MATS + FRAMES
ENTRANCE FLOOR GRILLES**
12 4813 + 12 4816



DIV
12



Floor Doors + Hatches

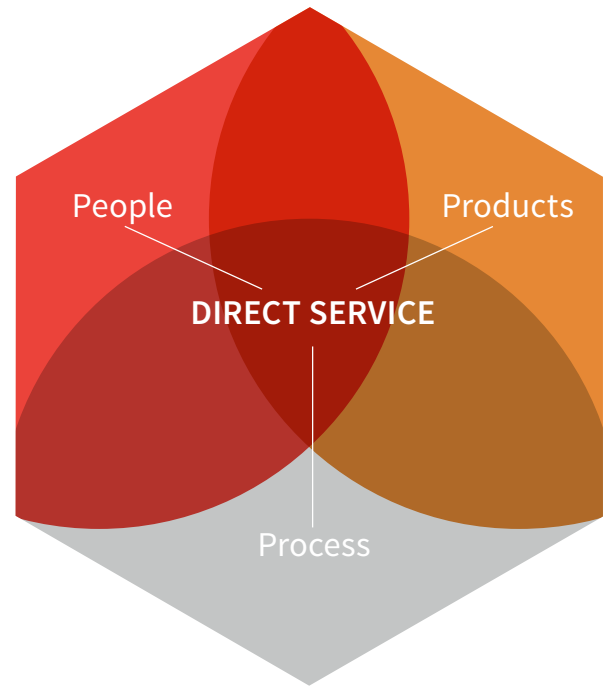
Nystrom floor, vault and sidewalk doors provide safe and reliable access below ground and between building floors. With Nystrom’s industry experienced personnel, we build our services around your specific needs. Contact our expert sales department for guidance on your next project.

FIRE-RATED	5-6	FALL PROTECTION	16-18
Diamond Tread	5	Safety Grating	16
1/8" and 1" Pan	6	Safety Nets	16
DRAINABLE	7-9	Safety Railings	17
300 psf Pedestrian	7	Safety Post	17
H2O Vehicular	8	Safety Chains	18
H2O Large Equipment Hatch	9	Loads	18
NON-DRAINABLE	10-11	OSHA	18
300 psf Pedestrian	10	Options	19
H2O Vehicular	11	Options	19
ARCHITECTURAL	12-13	Finish + Color	19
1" Pan Architectural	12	Latch + Lock	19
1/8" Pan Architectural	13		
RETROFIT	14-15		
Existing Opening	14		
Surface Mount	15		
WELL HATCHES	15		
Water Tight Well Hatch	15		

Direct Service Done Right

Nystrom offers a broad line of specialty building products to better serve construction professionals and architects.

We have customer focused professionals and hassle-free processes that directly serve and simplify the building process.



PEOPLE

architects, engineers, designers, estimators, construction professionals, and service specialists

PROCESS

estimating & bid design support, tech support, logistics support, installation support, cad, revit/bim

PRODUCTS

standard & custom designs, warehousing, quality assurance, exceptional warranties, leed certification, labeling & tagging

TIME

EFFICIENCY



SPECIFICATION SUPPORT

By giving architects, designers and contractors open access to our expert team, we simplify the process of specifying and procuring access products from design through delivery and installation.

EXPANDED
SIZES



Fire-Rated

DIAMOND TREAD FLOOR DOOR

Nystrom Diamond Tread Floor Door is redesigned to offer larger sizes and is tested to NFPA 288 standards to offer 2 and 3-hour fire ratings. This floor door is reinforced for pedestrian traffic loads and features an aluminum diamond tread cover plate.

FEATURES

SIZES Industry-leading sizes up to 52"x96"

FIRE-RATED Tested to NFPA 288, this floor door is Warnock-Hersey labeled with 2- or 3-hour fire-rating with a maximum temperature rise of 250°F.

DETAILS

LOAD 250 PSF up to 48"x60"; 150 PSF above 48"x60"

COVER Diamond Tread Plate, Aluminum: 1/4" mill finish

FRAME Aluminum, Angle Frame, Thermally Broken

INSTALLATION Cast-In Standard, Bolt-In optional

SPRING Enclosed coil, Type 17-7 Stainless Steel

HINGES Heavy Duty Type 316 Stainless Steel

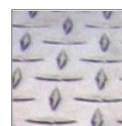
HOA Type 316 Stainless Steel, Optional self-closing

LATCH Slam latch Zinc-Plated Steel with inside lever handle

OPTIONS Self Closing Mechanism, Recessed Padlock Hasp, Mortise Lock

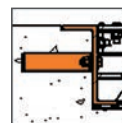
TEST NFPA 288, Warnock Hersey tested and listed by Intertek

MATERIALS

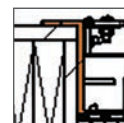


Aluminum

FRAME



Angle Frame
Cast-In



Angle Frame
Bolt-In

ORDER GUIDE - Fire Rated Diamond Tread Floor Door

FDF is standard with 2-hour rating unless 3-hour rating is chosen under "Options"

MODEL	LOAD	MATERIAL	WIDTH	X	LENGTH	COVER & INSTALL	OPTIONS
				X			
FDF	P - 250 PSF	A - ALUMINUM	24"-48" ¹		24"-60"	SWL -	3HR - 3 HOUR RATING ³
FDF	L - 150 PSF		>48"-52" ²		>60"-96"	S - SINGLE DOOR W - ANCHORS PROVIDED L - HANDLE	BI - BOLT-IN INSTALLATION ⁴ MC6 - MORTISE LOCK PR - RECESSED PADLOCK HASP SC - SELF CLOSING MECHANISM

¹ The load will default to "L" (150 PSF) for doors greater than 48" x 60" (e.g. FDFLA50x75SWL)

² The load will default to "P" (250 PSF) for doors up to and including 48" x 60" (e.g. FDFPA36x36SWL)

³ up to 48x60 only and 250 PSF only

⁴ 2-hour only

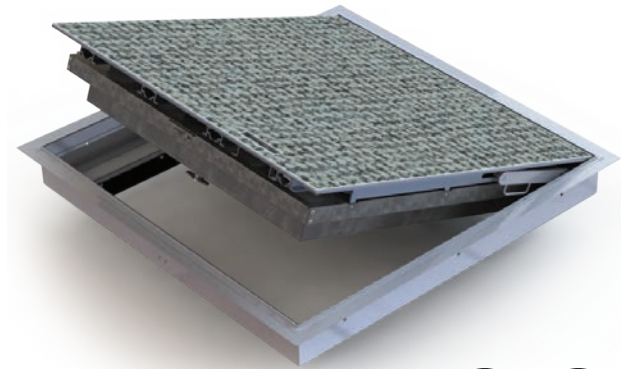
Additional sizes available, call for more information.

Fire-Rated Pan Floor Door

ARCHITECTURAL FLOOR DOOR WITH 1/8" OR 1" RECESSED COVER

EXPANDED
SIZES

The redesigned Nystrom Fire-Rated Floor Door features industry-leading sizes, improved interior release handle and tested to NFPA 288 standards. The addition of a 1" recessed cover along with the 1/8" cover accepts a variety of inlaid material, such as wood, concrete, tile, carpet, or vinyl. Interior applications only.



FEATURES

MINIMAL SIGHT LINE Choose a 1/8" or 1" recessed cover for flooring infill to seamlessly integrate with the surrounding area.

FIRE-RATED 2- or 3-hour fire-ratings tested to NFPA 288 (1/8" has 2- or 3-hour, 1" has 2-hour only)

DETAILS

LOAD 250 psf live load up to 48"x60"
150 psf live load above 48"x60"

COVER Aluminum: 1/4" smooth plate with 1/8" or 1" recess

FRAME Aluminum, Angle Frame, Thermally Broken

INSTALLATION Cast-In Standard, Bolt-In optional

SPRING Enclosed coil, Type 17-7 Stainless Steel

HINGES Heavy Duty Type 316 Stainless Steel

HOA Type 316 Stainless Steel, Optional Self Closing

LATCH Slam latch zinc-plated Steel with inside lever handle

OPTIONS Self Closing Mechanism, Recessed Padlock Hasp, Mortise Lock

TEST NFPA 288, Warnock Hersey tested and listed by Intertek

ORDER GUIDE - Fire Rated Architectural 1/8" Pan floor Door

FDF is standard with 2-hour rating unless 3-hour rating is chosen under "Options"

MODEL	LOAD	MATERIAL	WIDTH	X	LENGTH	COVER & INSTALL	OPTIONS
				X			
FDF	P - 250 PSF	A - ALUMINUM	24"-48" (250 PSF) ²		24" -60" (250 PSF)	SWL -	T1 1/8-INCH TILE DOOR
FDF	L - 150 PSF		>48"- 52" (150 PSF) ¹		>60" -96" (150 PSF)	S - SINGLE DOOR W - ANCHORS PROVIDED L - HANDLE	3HR 3 HOUR RATING ³ BI BOLT-IN INSTALLATION ⁴ SC SELF CLOSING MECHANISM PR - RECESSED PADLOCK HASP MC6 - MORTISE LOCK

² The load will default to "P" (250 PSF) for doors up to and including 48"x60 (e.g. FDFPA36x36SWL)

³ up to 48x60 only and 250 PSF only

⁴ 2-hour only

ORDER GUIDE - Fire rated Architectural 1" Pan Floor Door

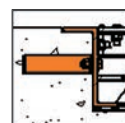
MODEL	LOAD	MATERIAL	WIDTH	X	LENGTH	COVER & INSTALL	OPTIONS
				X			
FDF	P - 250 PSF	A - ALUMINUM	24"-48"		24"-48"	SWL -	P1 - 1" INCH TILE DOOR
						S - SINGLE DOOR W - ANCHORS PROVIDED L - HANDLE	BI - BOLT-IN INSTALLATION SC - SELF CLOSING MECHANISM

MATERIALS



Aluminum

FRAME



Angle Frame
Cast-In



Angle Frame
Bolt-In



Drainable

FLOOR DOOR, 300PSF

This Drainable Floor Door is intended for standard-duty exterior or high moisture areas where liquid flow is required. The frame is constructed with a gutter channel for runoff into a drainage system and includes an EPDM gasket.

FEATURES

LARGEST CLEAR OPENING The components are engineered with a maximum clear opening.

LIGHTER WEIGHT The streamlined design utilizes the spring housing as a door stiffener, resulting in lighter covers.

DETAILS

LOAD 300 psf live load

MATERIAL

- Aluminum: 1/4 inch, mill finish, gray primer on exterior frame (for cast-in only)
- Steel: 3/16 inch, gray primer
- Stainless Steel: 3/16 inch, Type 304 or Type 316, bead blasted

COVER Diamond tread plate

FRAME Drainable gutter frame with integral 1 inch anchor flange, EPDM gasket and 1-1/2 inch drain coupling

INSTALLATION Cast In or Bolt-In

SPRING Enclosed coil, Type 17-7 Stainless Steel

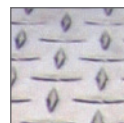
HINGES Heavy duty Type 316 Stainless Steel

HOLD OPEN ARM Type 316 Stainless Steel automatic hold open arm locks cover in open position

LATCH Slam latch Type 316 Stainless Steel with inside lever handle, includes removable threaded plug and key

OPTIONS Padlock Hasps, Locks, Finishes, Safety Grates, Safety Nets, Safety Rails, Skirting

MATERIALS



Aluminum

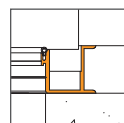


Primed Steel

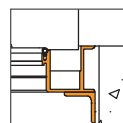


Stainless Steel

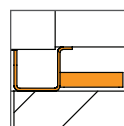
FRAME



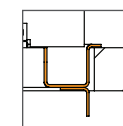
Gutter Frame
Cast-in Aluminum



Gutter Frame
Bolt-in Aluminum



Gutter Frame
Cast-in Steel or
Stainless Steel



Gutter Frame
Bolt-in Steel or
Stainless Steel

ORDER GUIDE

MODEL	MATERIAL	WIDTH	X	LENGTH	COVER	INSTALL
FDDP			X			—
	A 1/4" Aluminum	Standard Sizes (W x L) Single Door 24" x 24" 30" x 36" 36" x 36" 42" x 42" 48" x 48" Double Door 48" x 48" 48" x 72" 60" x 60"		S Single Door	FL Aluminum	
	P 3/16" Steel			D Double Door	WL Steel or Stainless Steel	
	S 3/16" Stainless Steel, Type 304					
	V 3/16" Stainless Steel, Type 316					

Additional sizes available, call for more information.

Drainable

FLOOR DOOR, H20

The H20 Drainable Floor Door is designed for infrequent, off street traffic in exterior or high moisture areas when liquid flow into the door is a concern. The frame is constructed with a gutter channel for water runoff into a drainage system.

FEATURES

VEHICLE LOAD Designed for exterior/wet environments and tested for H20 wheel load for infrequent, off-street traffic.

DRAINABLE FRAME Constructed with a gutter channel frame and drain hole for liquid removal.



DETAILS

LOAD H20 wheel load

MATERIAL

- Aluminum: 1/4 inch, mill finish, gray primer on exterior frame (for cast-in only)
- Steel: 3/16 inch, gray primer
- Stainless Steel: 3/16 inch, Type 304 or Type 316, bead blasted

COVER Diamond tread plate

FRAME Drainable gutter frame with integral 1 inch anchor flange, EPDM gasket and 1-1/2 inch drain coupling

INSTALLATION Cast-In

SPRING Enclosed coil, Type 17-7 Stainless Steel

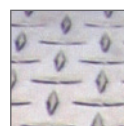
HINGES Heavy duty Type 316 Stainless Steel

HOLD OPEN ARM Type 316 Stainless Steel automatic hold open arm locks cover in open position

LATCH Slam latch Type 316 Stainless Steel with inside lever handle, includes removable threaded plug and key

OPTIONS Padlock Hasps, Locks, Finishes, Safety Grates, Safety Nets, Safety Rails, Skirting

MATERIALS



Aluminum

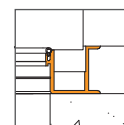


Primed Steel

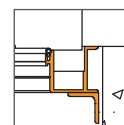


Stainless Steel

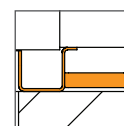
FRAME



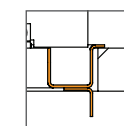
Gutter Frame
Cast-in Aluminum



Gutter Frame
Bolt-in Aluminum



Gutter Frame
Cast-in Steel or
Stainless Steel



Gutter Frame
Bolt-in Steel or
Stainless Steel

ORDER GUIDE

MODEL	MATERIAL	WIDTH	X	LENGTH	COVER	INSTALL
FDDH			X			—
	A 1/4" Aluminum	Standard Sizes (W x L) Single Door 24" x 24" Double Door 48" x 48"			S Single Door	FL Aluminum
	P 3/16" Steel				D Double Door	WL Steel or Stainless Steel
	S 3/16" Stainless Steel, Type 304			30" x 36"		
	V 3/16" Stainless Steel, Type 316			36" x 36"		

Additional sizes available, call for more information.



Drainable

LARGE EQUIPMENT HATCH, H20

The H20 load rated large equipment hatch is designed for infrequent, off-street traffic where moisture or liquid flow into the door is a concern. The frame is constructed with a gutter channel for water runoff into a drainage system.

FEATURES

MAXIMUM CLEAR OPENING AREA These double door units were designed for large equipment installation and maintenance access. They are the largest doors with an H20 load rating available in the market.

DRAINABLE FRAME Constructed with a gutter channel frame and drain hole for liquid removal.

DETAILS

LOAD H20 wheel load

MATERIAL Aluminum: 1/4 inch, mill finish with gray primer on exterior frame

COVER Diamond tread plate

FRAME Drainable gutter frame with integral 1 inch anchor flange, EPDM gasket and 1-1/2 inch drain coupling

INSTALLATION Cast-In

SPRING Enclosed coil, Type 17-7 Stainless Steel

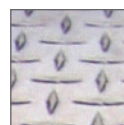
HINGES Heavy duty Type 316 Stainless Steel

HOLD OPEN ARM Type 316 Stainless Steel automatic hold open arm locks cover in open position

LATCH Slam latch Type 316 Stainless Steel with inside lever handle, includes removable threaded plug and key

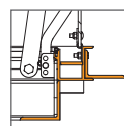
OPTIONS Padlock Hasps, Finishes, Safety Grates, Safety Nets, Safety Rails, Skirting

MATERIALS



Aluminum

FRAME



Gutter Frame
Cast-In

ORDER GUIDE

MODEL	WIDTH	X	LENGTH
FDOHA		X	DFL
Standard Sizes (W x L)			
Double Door			
48" x 80" to 48" x 120"			
60" x 80" to 60" x 120"			
96" x 80" to 96" x 120"			
108" x 48" to 108" x 120"			

Additional sizes available, call for more information.

Non-Drainable

FLOOR DOOR, 300PSF

Nystrom redesigned Pedestrian Floor Door is designed for standard-duty load and provides a flush installation for new concrete applications. Ideal use for utility and general building applications where water infiltration is not a concern.

FEATURES

PEDESTRIAN LOAD Designed for standard duty loads and tested up to 300psf live load.

NEW CONCRETE APPLICATION The built in angle frame with an integral flange allows for new concrete construction.



DETAILS

LOAD 300 psf live load

MATERIAL Aluminum: 1/4 inch, mill finish, gray primer on exterior frame (*for cast-in only*)

COVER Diamond tread plate

FRAME Angle with 1 inch integral flange

INSTALLATION Cast-In or Bolt-In

SPRING Enclosed coil, Type 17-7 Stainless Steel

HINGES Heavy-duty, Type 316 Stainless Steel

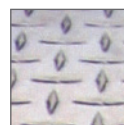
HOLD OPEN ARM Type 316 Stainless Steel, automatic, locks cover in open position

LATCH Slam latch, Type 316 Stainless Steel, with inside lever handle, includes removable threaded plug and key

GASKET EPDM gasket

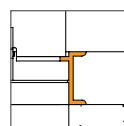
OPTIONS Padlock Hasps, Locks, Finishes, Gasket, Safety Grates, Safety Nets, Safety Rails, Skirting

MATERIALS

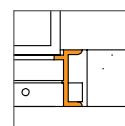


Aluminum

FRAME



Angle Frame
Cast-in



Angle Frame
Bolt-in

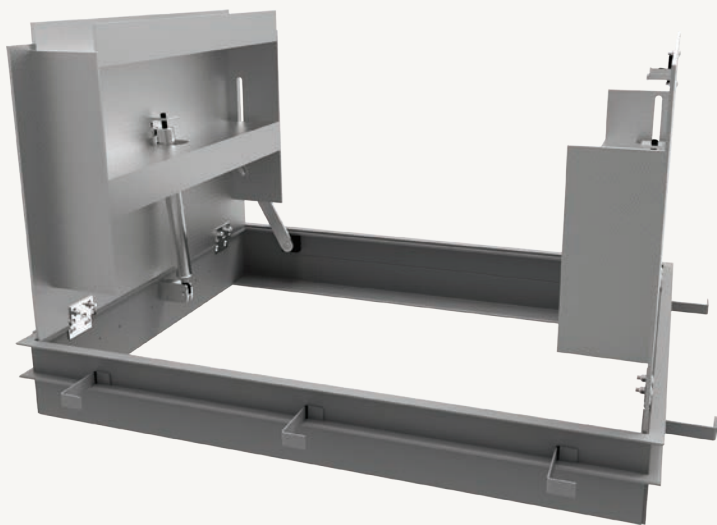
ORDER GUIDE

MODEL	WIDTH	X	LENGTH	COVER	FL
FDNPA		X			FL
	Standard Sizes (W x L)			S Single Door	
	Single Door	Double Door		D Double Door	
	24" x 24"	48" x 48"			
	30" x 36"	48" x 72"			
	36" x 36"	60" x 60"			
	42" x 42"				

Additional sizes available, call for more information.

Non-Drainable

FLOOR DOOR, H20



The H20 Floor Door is designed for infrequent, light duty, off street traffic in areas where water infiltration and moisture is not a concern. Designed with a flush installation for new concrete applications.

FEATURES

VEHICLE LOAD Constructed with substantial structural beams in the cover to support a H20 vehicle load.

STEEL OPTION Optional 3/16 inch steel for added strength and durability. Standard finish of primed gray powder coat.

DETAILS

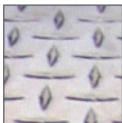
- LOAD** H20 wheel load
- MATERIAL** Aluminum: 1/4 inch, mill finish with gray primer on exterior frame
- COVER** Diamond tread plate
- FRAME** Angle
- INSTALLATION** Cast-In: 1/4 inch by 1 inch by 4 inch anchor straps welded for concrete pour
- SPRING** Coil type 17-7 Stainless Steel enclosed in Type 316 Stainless Steel telescopic tubes
- HINGES** Heavy duty Type 316 Stainless Steel
- HOLD OPEN ARM** Type 316 Stainless Steel automatic hold open arm locks cover in open position
- LATCH** Slam latch Type 316 Stainless Steel with inside lever handle, includes removable 5/16 inch steel square “L” handle and threaded plug
- OPTIONS** Padlock Hasps, Locks, Finishes, Gasket, Safety Grates, Safety Nets, Safety Rails, Skirting

ORDER GUIDE

MODEL	WIDTH	X	LENGTH	COVER	
FDNHA		X			AL
	Standard Sizes (W x L)			S Single Door	
	Single Door		Double Door	D Double Door	
	24" x 24"		48" x 48"		
	30" x 36"		48" x 72"		
	36" x 36"		60" x 60"		
	42" x 42"				

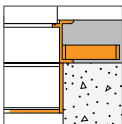
Additional sizes available, call for more information.

MATERIALS



Aluminum

FRAME



Angle Frame
Cast-In

1-Inch Pan

ARCHITECTURAL FLOOR DOOR

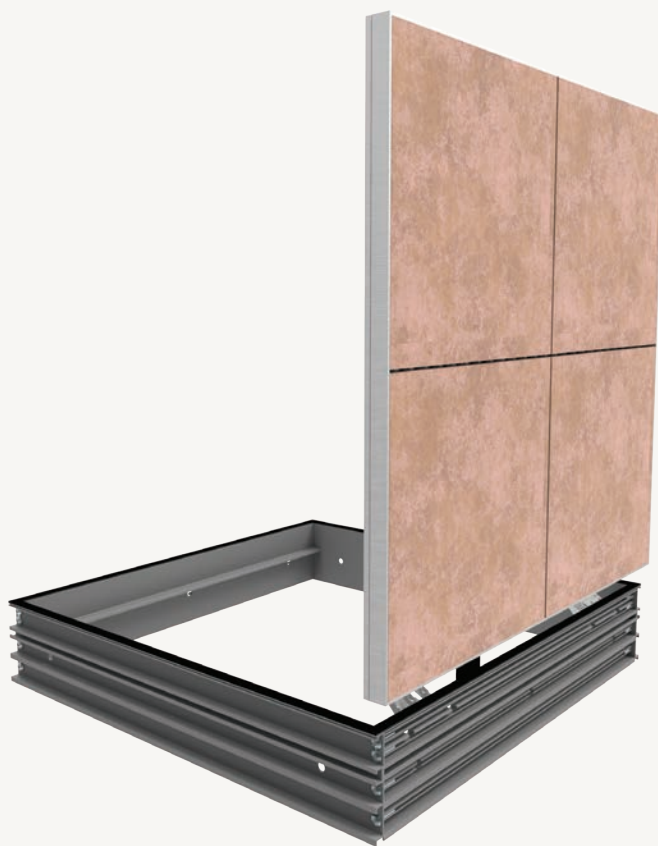
Nystrom Architectural Recessed Floor Door is engineered with a recess to allow for ceramic tile or concrete flooring. This design preserves the architectural aesthetics while maintaining a minimal sight line.

For dry, interior installation only. Not intended for wet or exterior environments

FEATURES

MINIMAL SIGHT LINE The 1/8 inch profile around the pan allows the door to seamlessly integrate with the surrounding area.

VERSATILE MOUNTING Engineered for either cast-in or bolt-in installation with a versatile frame design. Cast-in with the attachable bolts or bolt holes in the frame for easy mounting.



DETAILS

LOAD 300psf live load

MATERIAL Aluminum: 1/4 inch, mill finish, gray primer on exterior frame *(for cast-in only)*

COVER Recessed for 1 inch flooring infill

FRAME Extruded with channel for anchor bolt

INSTALLATION Cast In or Bolt-In

SPRING Gas spring

HINGES Nickel plated concealed hinge

HOLD OPEN Gas spring holds cover in open position

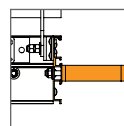
LATCH Slam latch Type 316 Stainless Steel with inside lever handle, includes removable 5/16 inch steel square "L" handle and threaded plug

MATERIALS

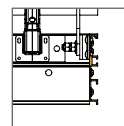


Aluminum

FRAME



Channel
Cast-in



Channel
Bolt-in

ORDER GUIDE

MODEL	WIDTH	X	LENGTH	COVER	INSTALL	
FDPPA		X				L
	Standard Sizes (W x L)			S Single Door	A Anchor	
	24" x 24"	36" x 36"			B Bolt-in	
	30" x 36"	39" x 39"				

Additional sizes available, call for more information.

1/8-Inch Pan

ARCHITECTURAL FLOOR DOOR



Nystrom Architectural Recessed Floor Door is engineered with a recess to allow for 1/8 inch VCT flooring infill. This design preserves the architectural aesthetics while maintaining a minimal sight line.

FEATURES

MINIMAL SIGHT LINE The recessed design allows for 1/8 inch VCT flooring infill to seamlessly integrate with the surrounding area.

STEEL OPTION Optional 3/16 inch steel for added strength and durability. Standard finish of primed gray powder coat.

DETAILS

LOAD 300psf live load

MATERIAL

- Aluminum: 1/4 inch, mill finish, gray primer on exterior frame (for cast-in only)
- Steel: 3/16 inch, gray primer
- Stainless Steel: 3/16 inch, Type 304 or Type 316

COVER Recessed for 1/8 inch flooring infill

FRAME Angle frame with formed channel frame hinge-side only

INSTALLATION Cast In or Bolt-In

SPRING Coil type 17-7 Stainless Steel enclosed in Type 316 Stainless Steel telescopic tubes

HINGES Heavy duty Type 316 Stainless Steel

HOLD OPEN ARM Type 316 Stainless Steel automatic hold open arm locks cover in open position

LATCH Slam latch Type 316 Stainless Steel with inside lever handle, includes removable 5/16 inch steel square "L" handle and threaded plug

OPTIONS Padlock Hasps, Locks, Finishes, Gasket, Safety Grates, Safety Nets, Safety Rails, Skirting

MATERIALS



Aluminum

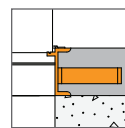


Primed Steel

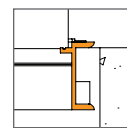


Stainless Steel

FRAME



Angle Frame
Cast-in



Angle Frame
Bolt-in

ORDER GUIDE

MODEL	MATERIAL	WIDTH	X	LENGTH	COVER	INSTALL
FDRP			X			L
	A 1/4" Aluminum	Standard Sizes (W x L)		S Single Door	A Anchor	
	P 3/16" Steel, Primed	Single Door	Double Door	D Double Door	B Bolt-in	
	S 3/16" Stainless Steel, Type 304	24" x 24"	48" x 48"			
	V 3/16" Stainless Steel, Type 316	30" x 36"	48" x 72"			
		36" x 36"	60" x 60"			
		42" x 42"				

Additional sizes available, call for more information.

Existing Opening

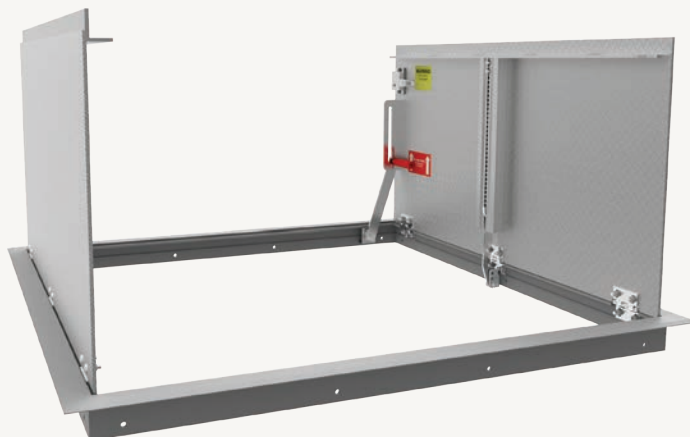
FLOOR DOOR, 300PSF

The Existing Opening Floor Door is designed for retrofit applications and is constructed with an angle frame. While providing a quality, economical option this is ideal for areas where water or moisture intrusion is not a concern.

FEATURES

PEDESTRIAN LOAD Designed for standard duty loads and tested up to 300psf live load in interior areas.

MATERIAL OPTIONS Upgrade the material to steel for added strength and durability or stainless steel for areas where corrosion is a concern.



DETAILS

LOAD 300 psf live load

MATERIAL

- Aluminum: 1/4 inch, mill finish
- Steel: 3/16 inch, gray primer
- Stainless Steel: 3/16 inch, Type 304 or Type 316, bead blasted

COVER Diamond tread plate

FRAME Angle

INSTALLATION Bolt-in

SPRING Enclosed coil, Type 17-7 Stainless Steel

HINGES Heavy-duty Type 316 Stainless Steel

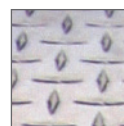
HOLD OPEN ARM Type 316 Stainless Steel, automatic, hold open arm locks cover in open position

LATCH Slam latch, Type 316 Stainless Steel, with inside lever handle and key

GASKET EPDM gasket (*aluminum only*)

OPTIONS Padlock Hasps, Locks, Finishes, Gasket, Safety Grates, Safety Nets, Safety Rails, Skirting

MATERIALS



Aluminum

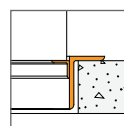


Primed Steel

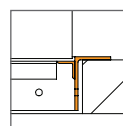


Stainless Steel

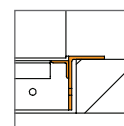
FRAME



Angle Frame
Bolt-in
Aluminum



Angle Frame
Bolt-in
Steel



Angle Frame
Bolt-in
Stainless Steel

ORDER GUIDE

MODEL	MATERIAL	WIDTH	X	LENGTH	COVER	DL
FDEP			X			
	A 1/4" Aluminum	Standard Sizes (W x L)			S Single Door	
	P 3/16" Steel	Single Door		Double Door	D Double Door	
	S 3/16" Stainless Steel, Type 304	24" x 24"		48" x 48"		
	V 3/16" Stainless Steel, Type 316	30" x 36"		48" x 72"		
		36" x 36"		60" x 60"		
		42" x 42"				

Additional sizes available, call for more information.

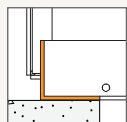


ORDER GUIDE

MODEL	WIDTH	X	LENGTH
FDNLA		X	SELN
	Standard Sizes (W x L)		
	24" x 24"		
	30" x 30"		
	30" x 36"		
	36" x 36"		
	42" x 42"		

Additional sizes available, call for more information.

FRAME



Interior Angle
Mech. Fastened

Surface Mount

FLOOR DOOR, 150PSF

The Surface Mount Floor Door is designed for retrofit applications with internal flanges for easy mounting. This door is an economical option for areas where water or moisture intrusion is not a concern.

DETAILS

LOAD 150psf live load

MATERIAL Aluminum: 3/16 inch, mill finish

COVER Diamond tread plate

FRAME Interior angle (flange)

INSTALLATION Surface mount, mechanically fastened

SPRING Coil Type 17-7 Stainless Steel, enclosed in Type 316 Stainless Steel telescopic tubes

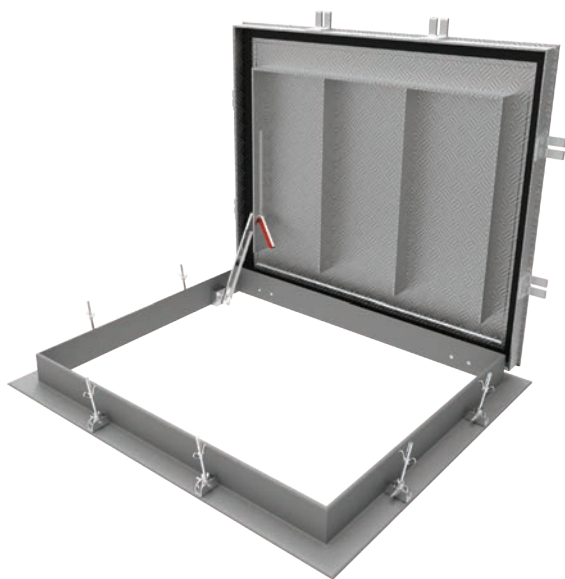
HINGES Heavy duty Type 316 Stainless Steel

HOLD OPEN ARM Type 316 Stainless Steel automatic hold open arm with red vinyl grip handle, locks cover in open position

LATCH Slam latch Type 316 Stainless Steel with inside lever handle, includes removable 5/16 inch steel square "L" handle and threaded plug

GASKET EPDM, around door perimeter

OPTIONS Padlock Hasps, Locks, Finishes, Gasket, Safety Grates, Safety Nets, Safety Rails, Skirting

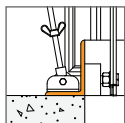


ORDER GUIDE

MODEL	WIDTH	X	LENGTH
FDWTA		X	SSW
	Standard Sizes (W x L)		
	24" x 24"		
	30" x 30"		
	30" x 36"		
	36" x 36"		
	42" x 42"		

Additional sizes available, call for more information.

FRAME



Angle Frame
Mech. Fastened

Water Tight

WELL HATCH, 625PSF

The Water Tight Well Hatch is designed for water-tightness up to 10 foot water column and 625psf load capacity. With waterproof gaskets and pressure locks, this hatch design is ideal for wells and areas prone to flooding.

DETAILS

LOAD 625psf live load

MATERIAL Aluminum: 1/4 inch, mill finish

COVER Diamond tread plate

FRAME Angle

INSTALLATION Surface mount, mechanically fastened

SPRING Coil Type 17-7 Stainless Steel enclosed in Type 316 Stainless Steel telescopic tubes

HINGES Heavy duty Type 316 Stainless Steel butt hinges

HOLD OPEN ARM Type 316 Stainless Steel automatic hold open arm locks cover in open position

LATCH Type 316 Stainless Steel pressure locks

CERTIFICATION Tested to 10 foot hydrostatic pressure

OPTIONS Padlock Hasps, Locks, Finishes, Gasket, Safety Grates, Safety Nets, Safety Rails, Skirting

Safety Grating

FALL PROTECTION

Nystrom OSHA compliant Safety Grating provides permanent fall protection. Designed with a 6 inch side access and featuring positive locking in both open and closed positions. The grate includes a padlock hasp and two nut rails. It is available as a factory installed option with most floor door styles, or as a retrofit designed to fit ANY manufacturer.

DETAILS

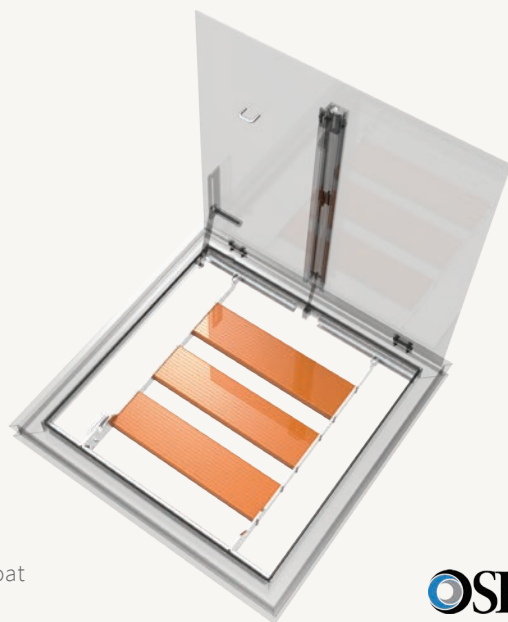
LOAD 300psf live load

MATERIAL Aluminum: extruded, 6 inch by 1/4 inch serrated plate, powder coat

HOLD OPEN LATCH Stainless steel with padlock hasp

COMPLIANCE OSHA 29 CFR1926.502(c)

Plastic fiber reinforced option available, call for more information.



ORDER GUIDE - Factory Installed

MODEL (FLOOR DOOR)	OPTION
FD _____	- SGT

ORDER GUIDE - Retrofit

MODEL	WIDTH	X	LENGTH	INSTALL
SGT	Standard Sizes (W x L)			- R Retrofit
	24" x 24"		42" x 42"	
	30" x 30"		48" x 48"	
	30" x 36"		48" x 72"	
	36" x 36"			

Additional sizes available, call for more information.

Safety Nets

FALL PROTECTION

Nystrom's Safety Net is designed to be installed in floor door openings to reduce risks associated with falls. The safety net easily slides on guide rails to facilitate entry and then repositioned to prevent fall through.

DETAILS

LOAD 5000 lb breaking strength

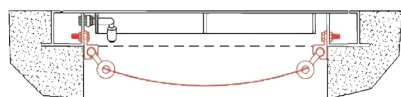
MATERIAL

- Rail: Aluminum 6061 T6
- Netting: Nylon webbing
- Rings: Aluminum alloy

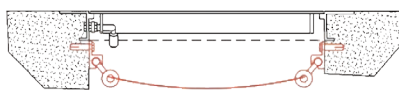
INSTALLATION

- Drainable Frame: 1/2 inch nuts and bolts
- Retrofit or Non-Drainable Frame: 1/2 inch wedge-style concrete anchors

COMPLIANCE OSHA 29 CFR1926.502(c)



*Drainable Frame Only
Installed in Gutter Channel*



*Retrofit or Non-Drainable Frame
Installed below frame, in wall of floor opening*



ORDER GUIDE

MODEL	MATERIAL	WIDTH	X	LENGTH	INSTALL
SN		Standard Sizes (W x L)			- R Retrofit
	A Aluminum	36" x 30"		48" x 48"	
	S Stainless Steel	48" x 48"		48" x 60"	



ORDER GUIDE

BASE	WIDTH	X	LENGTH	INSTALL
SRTAY		X		
	Standard Sizes (W x L) 30" x 18" 30" x 24" 36" x 30" 36" x 36" 48" x 48"		F Front Exit S Side Exit (Single Leaf Door) D Side Exit (Double Leaf Door)	C Chain G Self-Closing Gate

Safety Railings

FALL PROTECTION

Nystrom OSHA compliant Safety Railing is an ideal solution to provide a permanent means of fall protection for new and retrofit applications. The safety railing permanently mounts to the floor around an existing floor door or opening.

DETAILS

MATERIAL Rails and posts, aluminum, 1-1/4 inch ID (1.66 inch OD) Schedule 40 pipe

FINISH Powder Coat, Safety Yellow

FITTINGS Cast aluminum alloy with set screw hold

HARDWARE Hex head bolts 3/8 inch - 16 x 3/4 inch zinc plated steel

EXIT

- Self Closing Gate: Aluminum 1-1/4 inch tubular steel self closing with coil spring
- Chain: 3/16 inch zinc plated steel link chain with spring clip ends

COMPLIANCE OSHA 29 CFR 1910.28 and 1910.29



ORDER GUIDE

MODEL	MATERIAL	FINISH
SPY	Steel	Powder Coat, Yellow
SPG	Steel	Hot Dip Galvanized
SPA	Aluminum	Mill
SPS	Stainless Steel	Mill

Ladder Safety Post

FALL PROTECTION

The Safety Post is designed in compliance to OSHA to extend 42 inches above a landing platform to provide safe ladder access through a floor door or roof hatch. The spring assisted telescoping design mounts to the top two rungs of a fixed vertical ladder.

DETAILS

MATERIAL 1-1/2 inch by 1-1/2 inch by 1/8 inch high strength square tubing with a pull up loop provided at the upper end to facilitate raising of post

- Steel: Safety Yellow powder coat or hot dip galvanized
- Stainless Steel: Type 304, mill
- Aluminum: Mill

BALANCING SPRING Stainless steel constant force spring

HARDWARE Type 316 Stainless Steel

Safety Chains

FALL PROTECTION

Add an optional visual barrier for floor doors and hatches. Constructed with posts and loop chain, the system is available on three sides for single door or two sides for double door configurations.



DETAILS

POST MATERIAL Aluminum tubing, 1-1/2 inch O.D. by .065 inch wall thickness

CHAIN MATERIAL Stainless Steel, 2/16 inch loop chain, attached with spring clips to lifting eye nut

MOUNT Aluminum tubing, 2 inch O.D. with 2-1/2 inch mounting plate welded to exterior of frame

ORDER GUIDE

MODEL	MATERIAL
SC1	2 Post
SC2	4 Post

Loads

LIGHT DUTY

Tested to 150 lbs per square foot loading.

STANDARD DUTY/PEDESTRIAN

Tested to 300 lbs per square foot live loading.

H20 CLASSIFICATION

The American Associate of State Highway and Transportation Officials (AASHTO) "Standard Specification for Highways Bridges" defines H-20 loading as a two-axle truck with a maximum dual-wheel load of 16,000 lbs. HS-20 loading is defined as a tractor truck with a tandem axle semi-trailer with a dual-wheel load of 16,000 lbs.

The maximum safe live load is calculated by dividing the load at failure by two.

OSHA

OSHA 29 CFR 1910.29(b)(13) GENERAL INDUSTRY

When guardrail systems are used around holes that serve as points of access (such as ladderways), the guardrail system opening;

- Has a self-closing gate that slides or swings away from the hole, and is equipped with a top rail and midrail or equivalent intermediate member.

OSHA 29 CFR 1910.28(b)(3)(i) CONSTRUCTION INDUSTRY

Fall protection systems criteria

- Each employee is protected from falling through any hole that is 4 feet or more above a lower level.
- Includes guardrails, safety nets, personal fall arrests, etc.



Options

COVER



Grating
OCG1



View Port
Window
OW1



2 in Polyiso
Insulation
INR

OPERATION

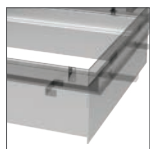


Panic Bar
GC



Door Position
Sensor
OP1

SKIRTING



Custom
Height
H_

GASKETS

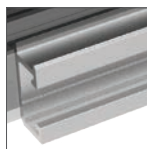


Gasket

OTHER

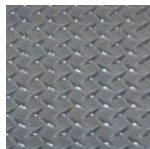


Grab Bar
OG1



Nut Rail
NR

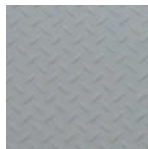
Finish + Color



Clear
FA1



Dark Bronze
FA6



ANSI 70 Gray
FP1



Safety Yellow
FP48

MODEL	MATERIAL	TYPE	COLOR
FLC		Lacquer	Clear
FTB		Bituminous	Black
FA4	Aluminum	Anodize	Light Bronze
FA6	Aluminum	Anodize	Dark Bronze
FP1	Steel	Powder Coat	ANSI 70 Gray
FP43	Steel	Powder Coat	Traffic White
FP48	Steel	Powder Coat	Safety Yellow
FSN		Slip-Not	-
FP2		Anti-Skid Paint	-

Colors shown give only an indication of shade.
Samples are available upon request

Latches + Locks



Padlock
Hasp



Detention
Lock



Recessed
Padlock Hasp



Mortise Operated
Deadbolt

MODEL	TYPE	BRAND	DESCRIPTION	LOCK ACCESS
PH	Padlock Hasp	None	Standard	Exterior
PR	Padlock Hasp	None	Recessed	Exterior
D1A	Detention	Brinks 7016	Prep Only	Interior & Exterior
D1B	Detention	Brinks 7016	Prep Only	Interior Only
D11	Detention	Brinks 7016	Keyed Lock	Interior & Exterior
D21	Detention	None	Slam Latch	Exterior Only
MC6	Mortise	Best Cylinder	Long Key w/Plastic Core	Exterior Only
MC6A	Mortise	Schlage Deadbolt	Thumb Turn, Above	Interior Only
MC6B	Mortise	Schlage Deadbolt	Thumb Turn, Below	Exterior Only
MC6P	Mortise	Best Cylinder	Cam Lock w/Plastic Core	Exterior Only
MC6S	Mortise	None	Slam Latch, Prep Only	Exterior Only

Visit nystrom.com for the latest version of this document and more information.



9300 73rd Avenue North
Minneapolis, MN 55428

Phone (800) 547-2635
Fax (866) 900-1959

info@nystrom.com



nystrom.com