

Full Abrasive

STAIR TREAD + NOSING

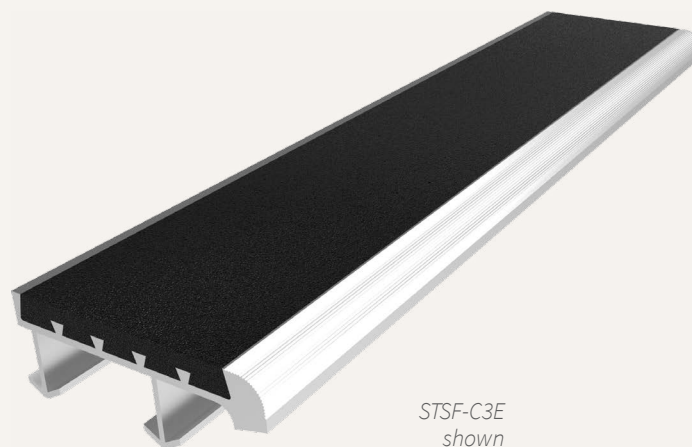
The redesigned Full Abrasive Stair Tread and Nosing is made from an extruded aluminum base with abrasive material locked into the channel. The material is consistent throughout the tread and features a new durable, serrated aluminum nose. Ideal for indoor and outdoor applications.

FEATURES

SERRATED NOSE The redesigned tread features a solid, serrated aluminum nose for protection and added slip resistance.

ANTI-SLIP SAFETY TREADS Reduce slip hazards with ADA and OSHA compliant abrasive stair treads. Abrasive treads provide a high level of slip resistance.

CONTINUOUS COLOR No need to worry about walking off the color as the abrasive material filler is dyed throughout.



STSF-C3E
shown

DETAILS

CHANNEL Extruded Aluminum

APPLICATION Poured Concrete, Steel Pan, Terrazzo or Wood

TREAD Full Abrasive

WIDTH 2, 3, or 4 inches

LENGTH Up to 12 linear feet

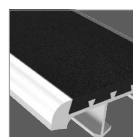
MOUNTING Anchor or Drilled Hole, Mech. Fastened

NOSING Short, Short-Tipped or Long

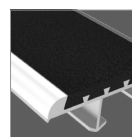
OPTIONS Photoluminescent, Mitered Cuts, Painted Undersides or Taped Tops

CODE COMPLIANCE 2010 ADA 504, 2015 IBC/ICC Section 1029.13.2, 2018 IBC/ICC Section 1029.14.2, and 2016 California Building Code Section 11B-504.4.1 and 11B-504.5

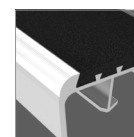
NOSING



Short

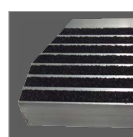


Short-Tipped

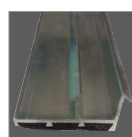


Long

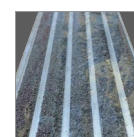
OPTIONS



Mitered Cuts



Painted
Undersides



Taped Tops

SHORT NOSE MODELS

| MODEL | WIDTH | INSTALL |
|----------|-------|------------------------------|
| STSF-C2E | 2" | Cast-In, Extruded Anchor |
| STSF-C2D | 2" | Drilled Hole, Mech. Fastened |
| STSF-C3E | 3" | Cast-In, Extruded Anchor |
| STSF-C3D | 3" | Drilled Hole, Mech. Fastened |
| STSF-C4E | 4" | Cast-In, Extruded Anchor |
| STSF-C4D | 4" | Drilled Hole, Mech. Fastened |

LONG NOSE MODELS

| MODEL | WIDTH | INSTALL |
|----------|-------|------------------------------|
| STSF-L2E | 2" | Cast-In, Extruded Anchor |
| STSF-L2D | 2" | Drilled Hole, Mech. Fastened |
| STSF-L3E | 3" | Cast-In, Extruded Anchor |
| STSF-L3D | 3" | Drilled Hole, Mech. Fastened |
| STSF-L4E | 4" | Cast-In, Extruded Anchor |
| STSF-L4D | 4" | Drilled Hole, Mech. Fastened |

SHORT TIPPED NOSE MODELS

| MODEL | WIDTH | INSTALL |
|----------|-------|------------------------------|
| STSF-P2E | 2" | Cast-In, Extruded Anchor |
| STSF-P2D | 2" | Drilled Hole, Mech. Fastened |
| STSF-P3E | 3" | Cast-In, Extruded Anchor |
| STSF-P3D | 3" | Drilled Hole, Mech. Fastened |
| STSF-P4E | 4" | Cast-In, Extruded Anchor |
| STSF-P4D | 4" | Drilled Hole, Mech. Fastened |