

# GRATEdesign®

## ROLL-UP GRILLE

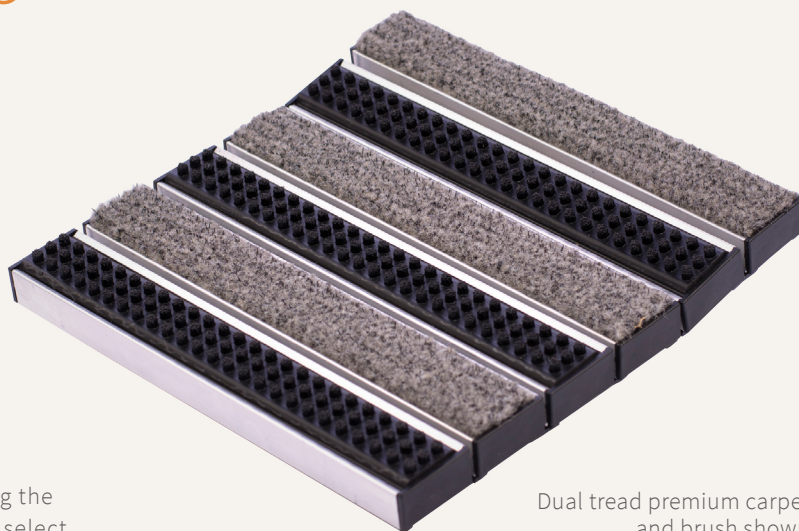
Nystrom's GRATEdesign roll-up grille is constructed of hollow extrusion rails joined by low-density polyethylene (LDPE) hinge. The cushion retained in the captive aluminum tread port, along with drainage holes, allows debris and moisture to flow through the grille.

### FEATURES

**DUAL TREADS FOR DUAL PURPOSE** Now offering the design flexibility to mix and match treads. Simply select treads for absorption, scraping or slip resistance.

**PVC FREE HINGES** Our PVC free, LDPE hinges raise the industry bar for performance in both flexibility and durability. Insist on LDPE hinges!

**ROLL BACK FOR EASY CLEANING** Easily maintain your entry system by rolling back the grille for regular sweeping or vacuuming to extend the life of your system.



Dual tread premium carpet and brush shown

**ZONES**  
1 - 3

### DETAILS

**RAIL MATERIAL** Aluminum

**DEPTH** 3/4 inch

**TREAD SPACING** 1-1/2 inches on center

**TREAD OPTIONS** Single or Dual

**FRAMES** Level Bed

**ROLLING LOAD** 1000 lbs/wheel

### GRILLE

MODEL	TREAD	FUNCTION	DEPTH	TRAFFIC
GR34P	Premium Carpet	Absorbent & Scraping	3/4"	Medium
GR34R	Rugged Scrub	Scraping	3/4"	Medium
GR34V	Vinyl	Scraping	3/4"	Medium
GR34U	Ribbed Rubber	Scraping	3/4"	Medium
GR34E	EcoTread	Slip Resistant	3/4"	Medium
GR34G	Vinyl Abrasive	Slip Resistant	3/4"	Medium
GR34B	Brush	Scraping	3/4"	Medium

### FRAME

MODEL	MOUNTING	MATERIAL	PROFILE	DEPTH
FR34LBC	Level Bed, Cast-In	Aluminum	1/2"	1-3/8"
FR34LBM	Level Bed, Mech. Fastened	Aluminum	1/8"	3/4"

### TREAD INSERTS



Premium Carpet



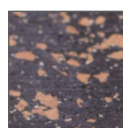
Rugged Scrub®



Vinyl



Ribbed Rubber



EcoTread™

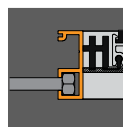


Vinyl Abrasive Insert

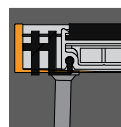


Brush

### FRAMES



Level Bed,  
Cast-In



Level Bed,  
Mech. Fastened