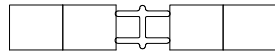
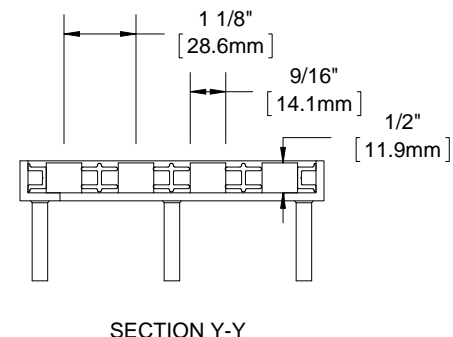
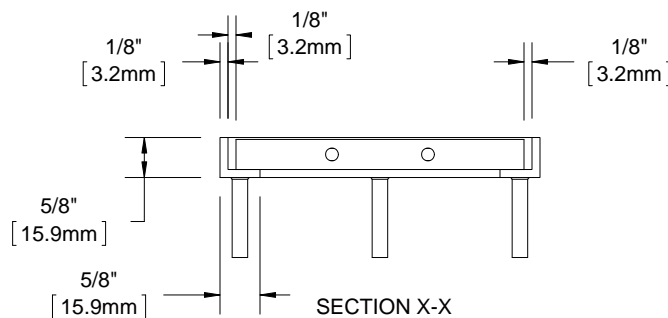
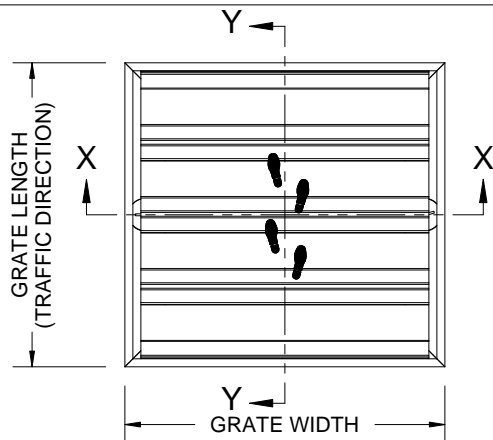


GV12C

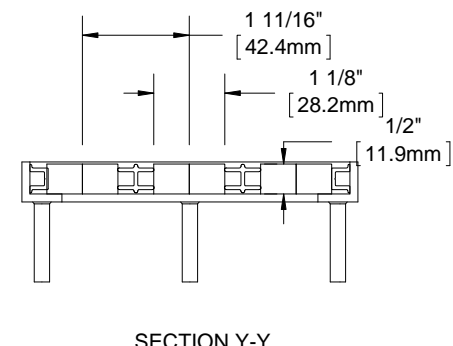
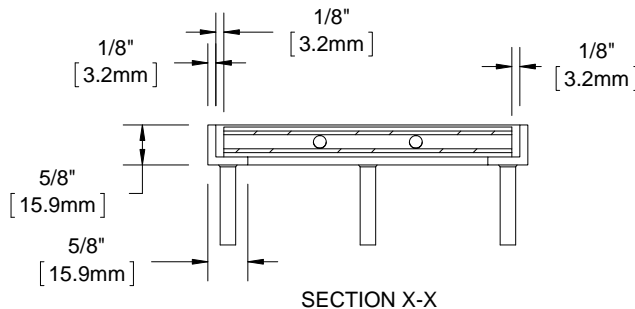
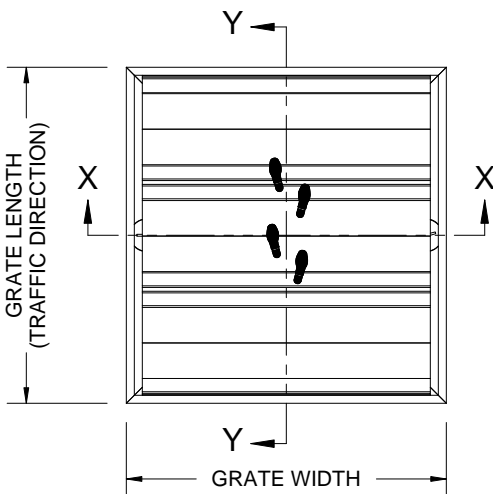


GV12CC

| QTY | MODEL | WIDTH | LENGTH | FINISH | LOCATION |
|-----|-------|-------|--------|--------|----------|
|     |       |       |        |        |          |
|     |       |       |        |        |          |
|     |       |       |        |        |          |
|     |       |       |        |        |          |
|     |       |       |        |        |          |
|     |       |       |        |        |          |
|     |       |       |        |        |          |
|     |       |       |        |        |          |
|     |       |       |        |        |          |
|     |       |       |        |        |          |



SINGLE TREAD



DOUBLE TREAD

- NOTES:**
- STANDARD MAXIMUM SECTION SIZE OF GRATE WIDTH NOT TO EXCEED 10'-0"
  - FRAME ANCHOR SPACING: 6" FROM CORNERS, 24" MAX
  - VERIFY TRAFFIC DIRECTION
  - ALL RAIL COMPONENTS ARE MADE OF 6063-T6 ALUMINUM ALLOY, ALL FRAME COMPONENTS ARE MADE OF 6063-T5 ALUMINUM ALLOY
  - TREAD RAILS MUST RUN PERPENDICULAR TO TRAFFIC DIRECTION
  - GRATE DIMENSION ALLOWS FOR CLEARANCE BETWEEN GRATE SECTIONS AND FRAMES IN THE WIDTH DIMENSION
  - ADDITIONAL INFORMATION CAN BE FOUND IN THE PRODUCT SPECIFICATION AND IS CONSIDERED PART OF THIS TRANSMITTAL.
  - FRAME PART NUMBER: FV12LBM

|   |         |  |            |
|---|---------|--|------------|
| PROJECT:  |         |  |            |
| ARCHITECT:                                      |         |  |            |
| CONTRACTOR:                                     |         |  |            |
|   |         | DESCRIPTION:   |            |
| 9300 73rd Avenue North<br>Minneapolis, MN 55428 |         | envIRONtread II®, 15/32", Reversible<br>Recycled Rubber Grate with Mechanically<br>Fastened Aluminum Frame |            |
| NAME  | DATE    | SIZE   | DWG. NO.   |
| DKL   | 4/20/15 | A  | GV12C-FLBM |
| RELEASED  | PE      | 4/20/15  | SCALE: NTS |
| SHEET 1 OF 1                                    |         | REV B  |            |