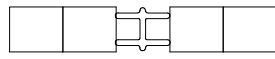
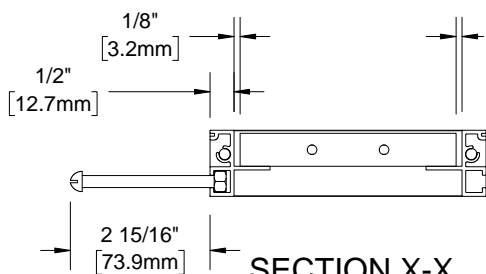
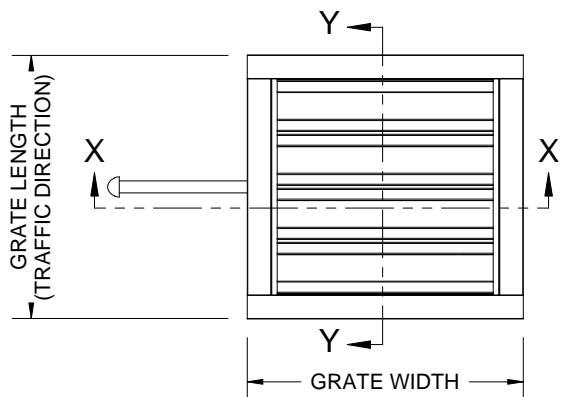


GV34C

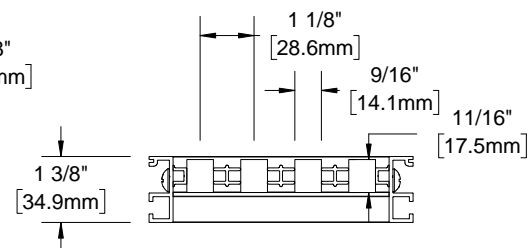


GV34CC

QTY	MODEL	WIDTH	LENGTH	FINISH	LOCATION

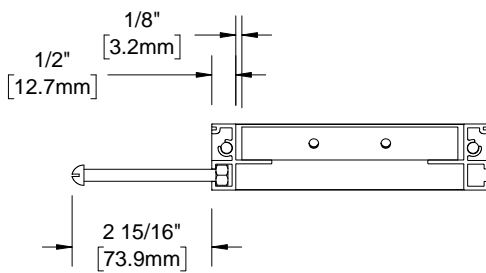
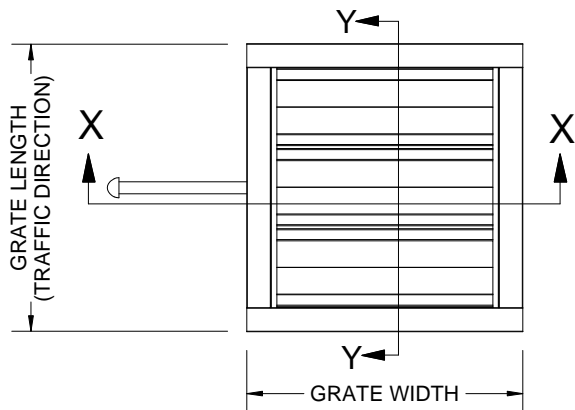


SECTION X-X
SCALE 1 : 4

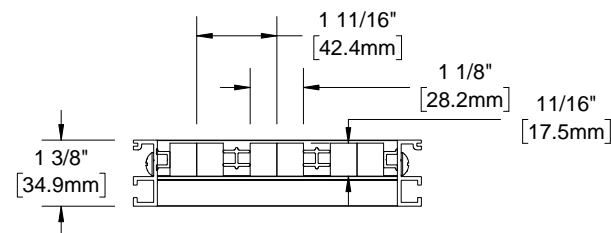


SECTION Y-Y
SCALE 1 : 4

SINGLE TREAD



SECTION X-X
SCALE 1 : 4



SECTION Y-Y
SCALE 1 : 4

DOUBLE TREAD

- NOTES:**
- STANDARD MAXIMUM SECTION SIZE OF GRATE WIDTH NOT TO EXCEED 10'-0"
 - FRAME ANCHOR SPACING: 6" FROM CORNERS, 24" MAX
 - VERIFY TRAFFIC DIRECTION
 - ALL RAIL COMPONENTS ARE MADE OF 6063-T6 ALUMINUM ALLOY, ALL FRAME COMPONENTS ARE MADE OF 6063-T5 ALUMINUM ALLOY
 - TREAD RAILS MUST RUN PERPENDICULAR TO TRAFFIC DIRECTION
 - GRATE DIMENSION ALLOWS FOR CLEARANCE BETWEEN GRATE SECTIONS AND FRAMES IN THE WIDTH DIMENSION
 - ADDITIONAL INFORMATION CAN BE FOUND IN THE PRODUCT SPECIFICATION AND IS CONSIDERED PART OF THIS TRANSMITTAL.
 - FRAME MODEL NUMBER: FV34LBC

PROJECT:			
ARCHITECT:			
CONTRACTOR:			
 9300 73rd Avenue North Minneapolis, MN 55428		DESCRIPTION:	
		envIRONtread II®, 3/4", Reversible Recycled Rubber Grate with Cast in Place Aluminum Frame	
NAME	DATE	SIZE	DWG. NO.
DRAWN	DKL	4/20/15	A
RELEASED	PE	4/20/15	SCALE: NTS
SHEET 1 OF 1		REV B	