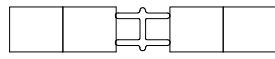
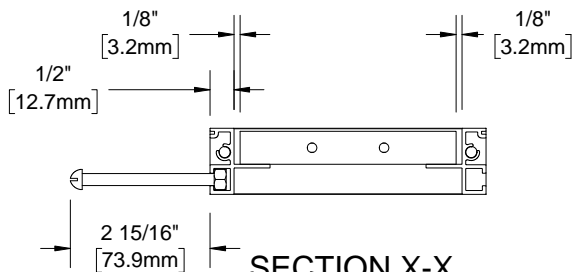
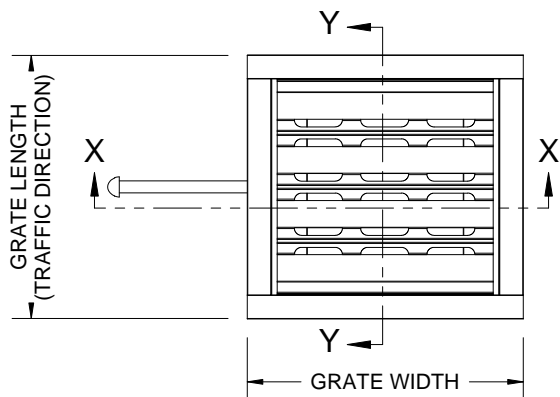


GV340

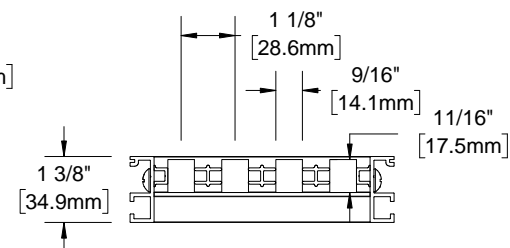


GV340O

QTY	MODEL	WIDTH	LENGTH	FINISH	LOCATION

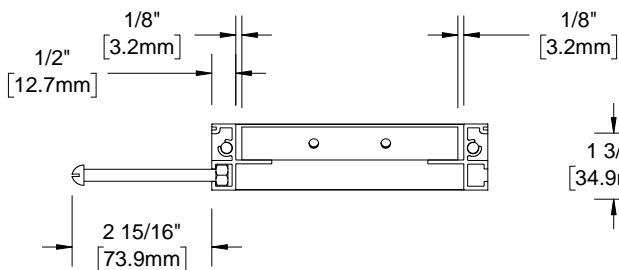
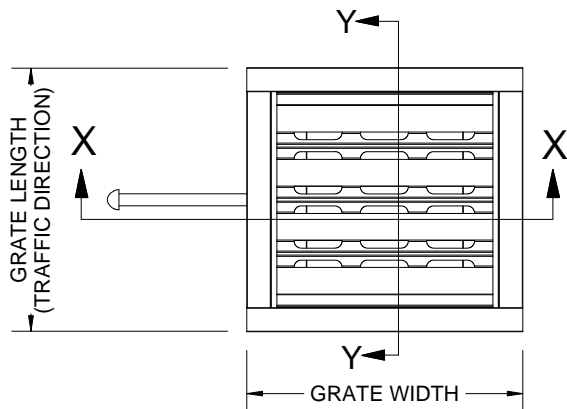


SECTION X-X
SCALE 1 : 4

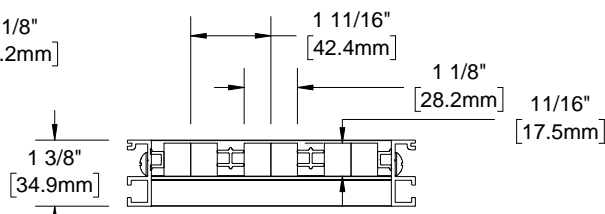


SECTION Y-Y
SCALE 1 : 4

SINGLE TREAD



SECTION X-X
SCALE 1 : 4



SECTION Y-Y
SCALE 1 : 4

DOUBLE TREAD

NOTES:

- STANDARD MAXIMUM SECTION SIZE OF GRATE WIDTH NOT TO EXCEED 10'-0"
- FRAME ANCHOR SPACING: 6" FROM CORNERS, 24" MAX
- VERIFY TRAFFIC DIRECTION
- ALL RAIL COMPONENTS ARE MADE OF 6063-T6 ALUMINUM ALLOY, ALL FRAME COMPONENTS ARE MADE OF 6063-T5 ALUMINUM ALLOY
- TREAD RAILS MUST RUN PERPENDICULAR TO TRAFFIC DIRECTION
- GRATE DIMENSION ALLOWS FOR CLEARANCE BETWEEN GRATE SECTIONS AND FRAMES IN THE WIDTH DIMENSION
- ADDITIONAL INFORMATION CAN BE FOUND IN THE PRODUCT SPECIFICATION AND IS CONSIDERED PART OF THIS TRANSMITTAL.
- FRAME MODEL NUMBER: FV34LBC

PROJECT:

ARCHITECT:

CONTRACTOR:



9300 73rd Avenue North
Minneapolis, MN 55428

DESCRIPTION:

envIRONtread II®, 3/4", Perforated Rail
Reversible Recycled Rubber Grate with
Cast-in Place Aluminum Frame

NAME	DATE	SIZE	DWG. NO.
DRAWN: DKL	4/20/15	A	GV340-FLBC
RELEASED: PE	4/20/15	SCALE: NTS	SHEET 1 OF 1
			REV B