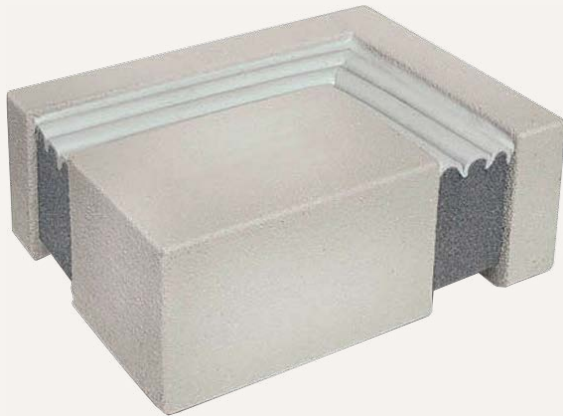


Horizontal Deck

COMPRESSION SEAL (HES)



Standard floor and parking deck seal. This Horizontal Deck Compression Seal is a high-movement silicone bellow system used in deck or roof perimeters. Conforming to joint gap irregularities, it is held in place by the expanding foam and field-installed silicone caulk. It is watertight, wax free, UV stable with low and high temperature stability and can be used under a cover plate in pedestrian or light vehicular traffic areas.

FEATURES

MULTI-FUNCTIONAL The primary seal creates a watertight assembly and preserves the buildings R-value.

COLOR COORDINATING Add a complementary color to your building with one of the available pre-tinted silicone colors.

WAX FREE When heated and compressed, the foam sealant will not bleed from wax saturation.

DETAILS

MATERIAL Silicone bellow with foam sealant

SIZE 1/2 inch to 8 inches

LENGTH

- 10 linear foot roll for sizes up to 1.25 inches
- 6.56 linear feet (2 meter)

APPLICATION Interior or Exterior

INSTALLATION Floor

COLORS Sikasil WS-295

OPTIONS Terminations and Transitions

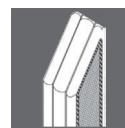
MOVEMENT +/-50% (Total 100%)

MATERIALS

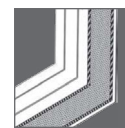


Silicone Bellow

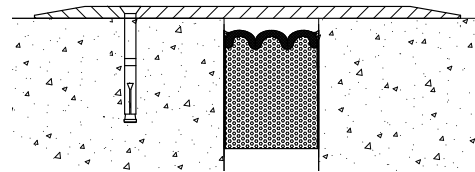
OPTIONS



Terminations



Transitions



Decking Application (Pedestrian or Light Cart Traffic) - used in conjunction with a metal cover plate.

MODELS

MODEL	JOINT SIZE at mean T° F	SEAL DEPTH	MODEL	JOINT SIZE at mean T° F	SEAL DEPTH
HES-050	1/2" (12mm)	1-3/4" (45mm)	HES-400	4" (100mm)	4-1/2" (115mm)
HES-075	3/4" (20mm)	1-3/4" (45mm)	HES-500	5" (125mm)	5-1/2" (140mm)
HES-100	1" (25mm)	1-3/4" (45mm)	HES-600	6" (150mm)	6" (150mm)
HES-200	2" (50mm)	2-1/2" (65mm)	HES-700	7" (175mm)	7" (175mm)
HES-300	3" (75mm)	3-1/2" (90mm)	HES-800	8" (200mm)	8" (200mm)

Notes: Sizes under 1-1/2" (40mm) are manufactured with a single silicone face bellow. Larger sizes up to 8" (200mm) are manufactured with multiple bellows.

Additional sizes available in 1/4 inch increments from 1 inch to 6 inches, 1/2 inch increments from 6 inches to 8 inches.