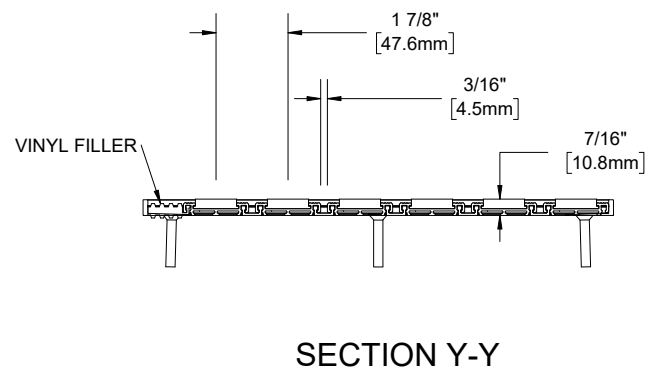
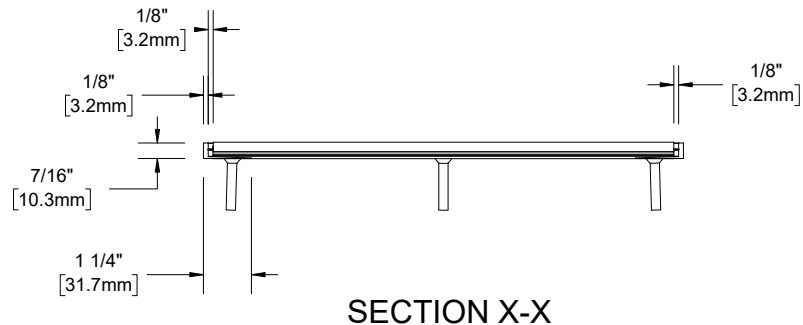
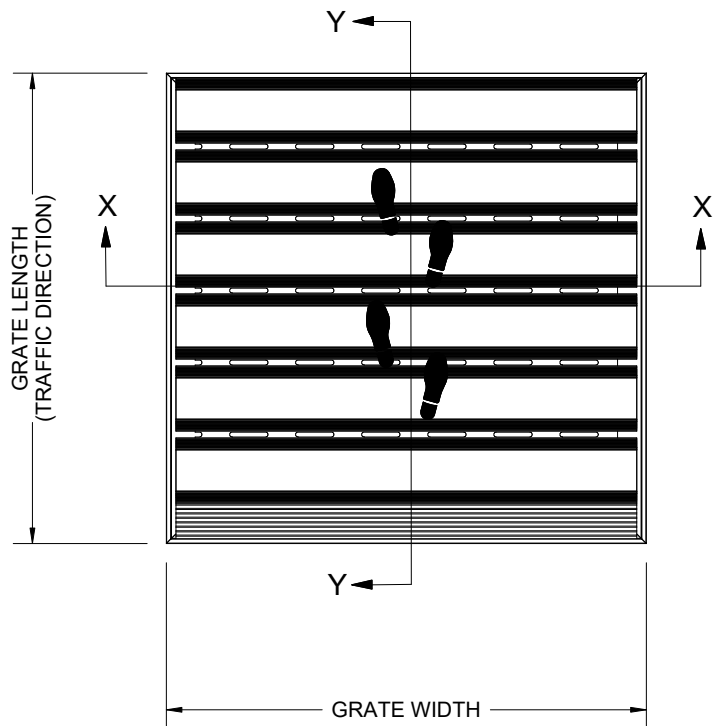


QTY	MODEL	WIDTH	LENGTH	FINISH	LOCATION

B



B

A

A

- NOTES:**
- STANDARD MAXIMUM SECTION SIZE OF GRATE/MAT WIDTH NOT TO EXCEED 10'-0" UNLESS OTHERWISE SPECIFIED
  - FRAME ANCHOR SPACING: 6" FROM CORNERS, 24" MAX
  - VERIFY TRAFFIC DIRECTION AND THAT SECTIONING DOES NOT OCCUR IN A TRAFFIC LANE
  - ALL RAIL COMPONENTS ARE MADE OF VINYL, FRAME EXTRUSIONS ARE MADE OF 6063-T5 ALUMINUM ALLOY
  - TREAD RAILS MUST RUN PERPENDICULAR TO TRAFFIC DIRECTION
  - TRIMMABLE FILLER PROVIDED TO ENSURE A TIGHT FIT IN THE TRAFFIC DIRECTION
  - GRATE DIMENSION ALLOWS FOR CLEARANCE BETWEEN GRATE SECTIONS AND FRAMES IN THE WIDTH DIMENSION
  - ADDITIONAL INFORMATION CAN BE FOUND IN THE PRODUCT SPECIFICATION AND IS CONSIDERED PART OF THIS TRANSMITTAL.
  - FRAME PART NUMBER: FT38LBM

PROJECT:			
ARCHITECT:			
CONTRACTOR:			
 9300 73rd Avenue North Minneapolis, MN 55428		DESCRIPTION:	
		MATrac, 3/8", Vinyl, LDPE Hinge, Roll-up Mat with Mechanically Fastened, Level Bed, Aluminum Frame	
NAME	DATE	SIZE	DWG. NO.
DRAWN: DKL	1/6/23	A	MT38-FLBM
RELEASED: PE	1/6/23	SCALE: NTS	SHEET 1 OF 1
			REV A

PROPRIETARY AND CONFIDENTIAL: THE INFORMATION CONTAINED IN THIS DRAWING IS THE SOLE PROPERTY OF NYSTROM. ANY REPRODUCTION IN PART OR AS A WHOLE WITHOUT THE WRITTEN PERMISSION OF NYSTROM IS PROHIBITED.