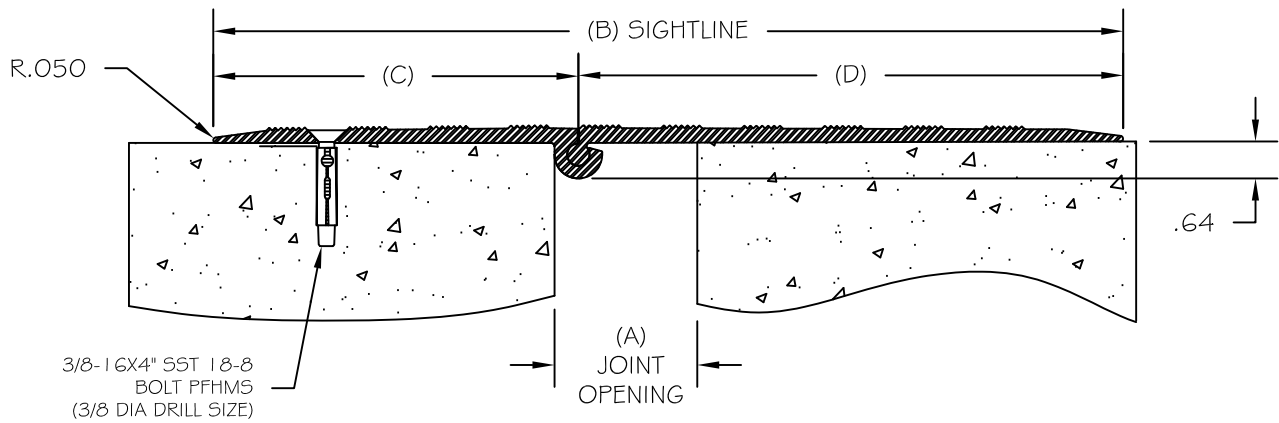


PLAN VIEW
(NOT TO SCALE)



SECTION VIEW
(NOT TO SCALE)

SPECIFICATIONS:

- 6063-T6 ALUMINUM EXTRUSION, 10 FT LENGTHS
- MILL FINISH
- SUPPLIED WITH MOUNTING BOLTS, EPOXY AND 2 MIXING TIPS
- EPOXY GUN ORDERED SEPARATELY P/N 5699
- MALE PIECE RESTS ON LOWER FLOOR LEVEL WHEN APPLICABLE
- 5° UPWARD MOVEMENT (MAX)
- 15° DOWNWARD MOVEMENT (MAX)
- ADA COMPLIANT TO SECTION 4.5.2

PART #	JOINT OPENING (A)		SIGHTLINE (B)		TOTAL MOVEMENT		POINT LOAD	DISTRIBUTED LOAD	EXTRUSION DIMENSIONS			
	IN	MM	IN	MM	IN	MM	LBS	LBS/IN SQ	(C)		(D)	
PD-200	2.0	51	8.0	203	2.0	51	550	300	4.5	114	3.5	89
PD-300	3.0	76	13.125	333	4.0	102	350	150	6.5	165	6.625	168
PD-400	4.0	102	16.0	406	5.5	140	600	160	6.5	165	9.5	241
PD-600**	6.0	153	20.0	508	8.0	203	---	---	8.375	213	11.625	295