

Personnel™

SINGLE POINT LATCH ROOF HATCH

The Personnel Roof Hatch is improved to offer superior weather resistance in an easy to order stock roof hatch. The industry's leading roof hatch is customizable, sized for OSHA compliant safety railings and available in a variety of materials and finishes.

FEATURES

INDUSTRY'S BEST Tested for small and large missile impact-Class IV (TAS 201-94), Air Pressure & Water Penetration (TAS 202-94), and Cyclic Wind Pressure Loading (TAS 203-94).

SAFETY RAILING READY Safety railings install quick and easy with predrilled counterflash, designed to meet the 42" height requirement per OSHA and IBC.

SUPERIOR POWDER-COAT FINISH The standard (BRHPG) red oxide powder-coat finish provides outstanding corrosion resistance, superior gloss and color retention.

GAS SPRING OPERATION Designed for a smooth one-handed operation that compiles with OSHA safety standards, this roof hatch is easy to open and close.



DETAILS

MATERIAL

- 11 gauge, Aluminum, mill finish
- Steel: Galvanneal 14 gauge, ANSI 70 Gray powder coat
- Stainless Steel: Type 304, 14 gauge, 2B matte finish

COVER Formed metal cover with liner, stiffened to withstand a live load of 40psf with a max deflection of 1/150 of the span

CURB Single wall curb with EZ tab counterflash and mounting flange

INSULATION 1 inch polystyrene in cover, 1 inch polyiso around curb or optional 2 inch polyiso in cover and curb; R-12, specify -IRR

GASKET Extruded EPDM adhesive-backed gasket seal, continuous around cover

HOLD-OPEN ARM Zinc-plated steel automatic hold open arm with red vinyl grip handle locks cover in open position

CERTIFICATION Miami-Dade County & Florida Product Approved

STANDARD MODELS

GRAY	WHITE	ALUMINUM	SIZE (IN.)	ACCESS	LATCH
G3054	W3054	A3054	30 x 54	Ship Stair	Single Point
G3630	W3630	A3630	36 x 30	Ladder	Single Point
G3636	W3636	A3636	36 x 36	Ladder	Single Point
G4848	W4848	A4848	48 x 48	Ladder	Single Point

Additional sizes and options available, call for more information.

FINISHES



Mill Aluminum



ANSI 70 Gray Powder Coat



High Reflectance White Powder Coat



2B Matte Stainless Steel

SINGLE POINT LATCH

LATCH Zinc-plated steel slam latch with exterior and interior turn handle and padlock hasps; 20psf wind uplift for lengths ≤ 60 inches.

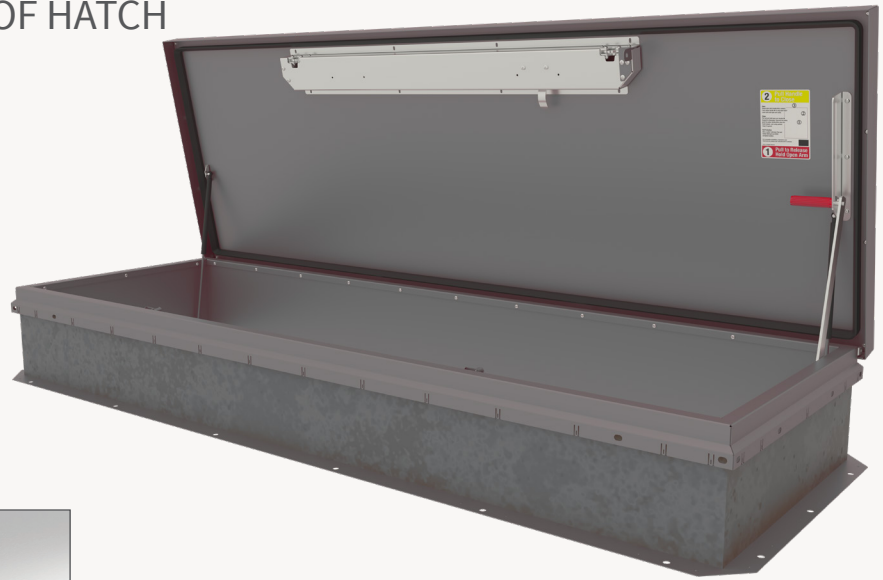
SPRING Gas-spring with integrated damper for smooth, controlled lift assistance

HINGE Heavy-duty pintle hinge with stainless steel hinge pin

PULL HANDLE Interior safety pull down handle, yellow powder coat

Personnel™

2 POINT POINT LATCH ROOF HATCH



FINISHES



Mill
Aluminum



ANSI 70 Gray
Powder Coat



High
Reflectance
White Powder
Coat



2B Matte
Stainless Steel



2-POINT LATCH

LATCH Zinc-plated steel latch with exterior and interior turn-handles and padlock hasps

STANDARD MODELS

GALVANNEAL STEEL GRAY	GALVANNEAL STEEL WHITE	ALUMINUM	SIZE (IN.)	ACCESS	LATCH
G3072	W3072	A3072	30 x 72	Ship Stair	2-Point
G3096	W3096	A3096	36 x 96*	Service Stair	2-Point
G3696	W3096	A3096	30 x 96	Service Stair	2-Point

Additional sizes and options available, call for more information.

*Not approved for Miami-Dade or State of Florida

