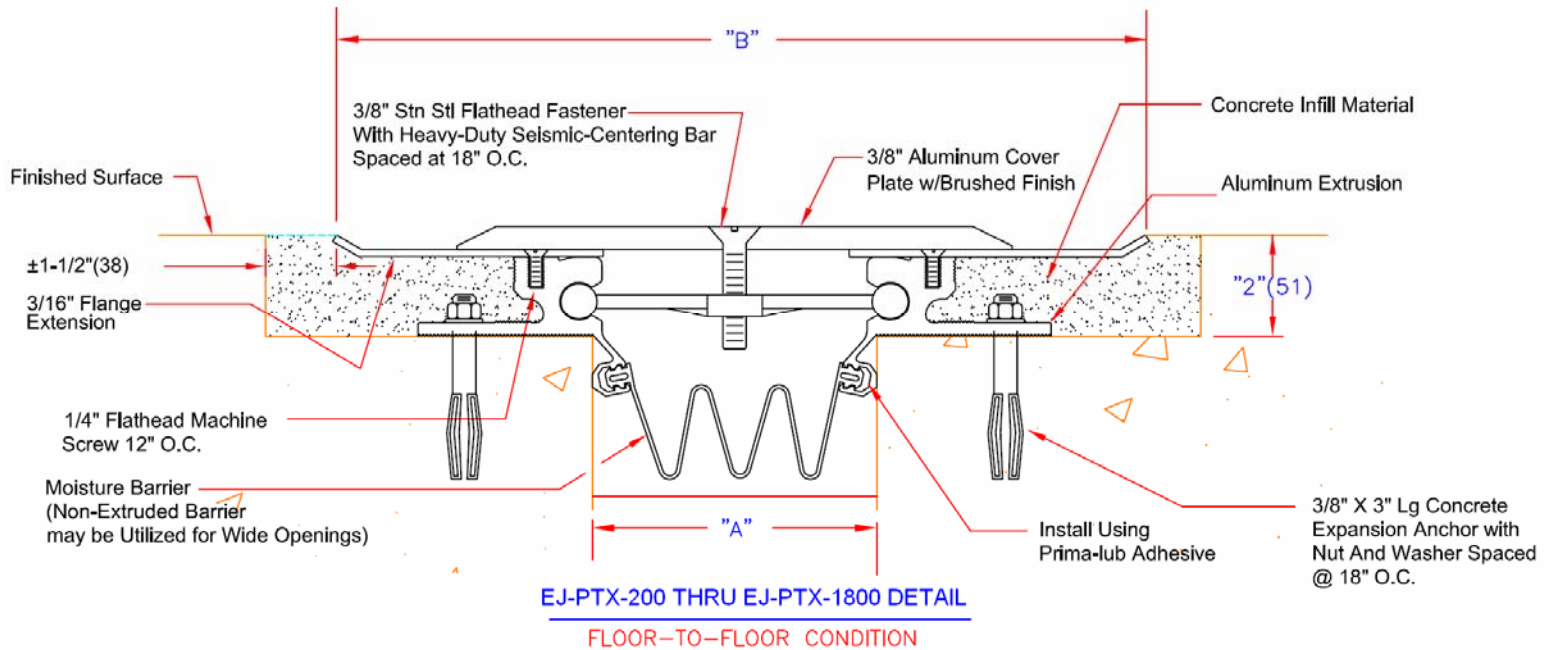


# EJ-PTX Series

## Expansion joint cover for decking



( ) - Denotes Millimeters

DIMENSION CHART					
MODEL	"A" @ MIN *	"A" @ MID	"A" @ MAX	"B" @ MID	TOTAL MOVMENT
EJ-PTX-200	1-3/8"(35)	2"(51)	3"(76)	6-1/4"(159)	1-5/8"(41)
EJ-PTX-400	1-3/8"(35)	4"(102)	6"(152)	10-1/4"(260)	4-5/8"(117)
EJ-PTX-600	1-3/8"(35)	6"(152)	9"(229)	14-1/4"(362)	7-5/8"(194)
EJ-PTX-800	1-3/8"(35)	8"(203)	12"(305)	18-1/4"(464)	10-5/8"(270)
EJ-PTX-1000	1-3/8"(35)	10"(254)	15"(381)	22-1/4"(565)	13-5/8"(346)
EJ-PTX-1200	1-3/8"(35)	12"(305)	18"(457)	26-1/4"(667)	16-5/8"(422)
EJ-PTX-1500	1-3/8"(35)	15"(381)	23"(584)	32-3/4"(832)	21-5/8"(549)
EJ-PTX-1800	1-3/8"(35)	18"(457)	27"(686)	38-1/4"(972)	25-5/8"(657)

\* Plate Will Vertically Displace And Extend Beyond Outside Edge Of Flange Extension During Full Closure @ Seismic Movement



Right to site.

Call: 800-547-2635 Fax: 800-317-8770  
USA or Canada  
Web: [www.nystrom.com](http://www.nystrom.com)  
E-mail: [info@nystrom.com](mailto:info@nystrom.com)

PROJECT:

CONTRACTOR:

ARCHITECT:

INITIALS:

QTY:

DATE:

PART NUMBER: