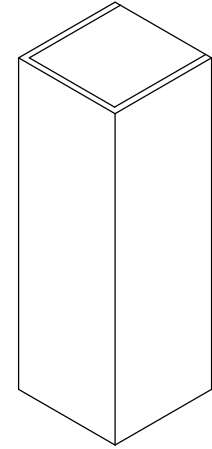
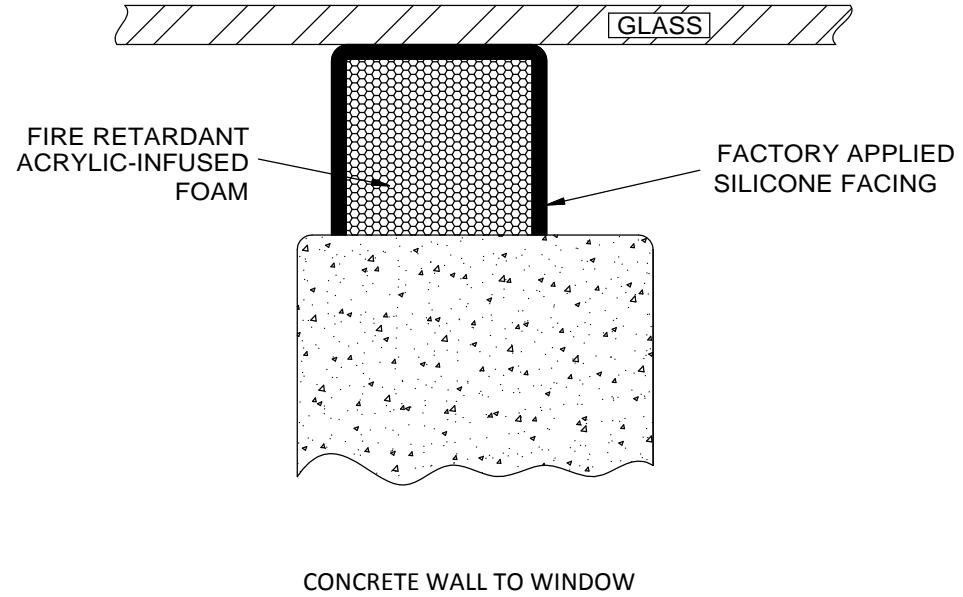



QTG SERIES		
MODEL	JOINT NOMINAL	DEPTH
EJ-QTG-100	1"	2"
EJ-QTG-125	1 1/4"	2"
EJ-QTG-150	1 1/2"	2"
EJ-QTG-175	1 3/4"	2"
EJ-QTG-200	2"	2"
EJ-QTG-225	2 1/4"	2"
EJ-QTG-250	2 1/2"	2"
EJ-QTG-275	2 3/4"	2"
EJ-QTG-300	3"	2"
EJ-QTG-325	3 1/4"	2"
EJ-QTG-350	3 1/2"	2"
EJ-QTG-375	3 3/4"	2"
EJ-QTG-400	4"	2"
EJ-QTG-425	4 1/4"	2"
EJ-QTG-450	4 1/2"	2"
EJ-QTG-475	4 3/4"	2"
EJ-QTG-500	5"	3"
EJ-QTG-525	5 1/4"	3"
EJ-QTG-550	5 1/2"	3"
EJ-QTG-575	5 3/4"	3"
EJ-QTG-600	6"	3"



QTG SERIES COLORS
Limestone
White
Beige
Light Gray
Black
Medium Bronze
Sandstone
Adobe Tan
Dusty Rose
Quarry Red
Charcoal
Colonial White

QTG Product Notes

1. Sound, Draft, Heat, Cold and Dust Blocking Acoustic Joint Filler for Interior, Non-Moving Joints and Gaps
2. Colorized, versatile and ideally suited to filling gaps between the ends of permanent, semi-permanent, or movable partitions, head-of-wall and other conditions
3. Coated on a third face and is typically used to fill gaps between the glass of curtainwall or windows on one side and solid substrates on the other. The third coating aesthetically covers the foam core so that the foam is not visible through the glass. The coating can be the same color on all three faces or different on each face to coordinate with wall coverings.

CUSTOMER:			
JOB REF:			
LOCATION:			
QTY:			
 9300 73rd Avenue North Minneapolis, MN 55428		TITLE:	
		EJ-QTG SERIES, EJ Seal, Int/Ext, Wall to Wall, Compression, Static Movement, 10 FT Lengths, Glass Surface Install	
NAME	DATE	SIZE	DWG. NO.
DRAWN	DKL	7/16/19	A
RELEASED	GLN	7/16/19	WEIGHT:
			REV
EJ-QTG SERIES			A
SHEET 1 OF 1			

PROPRIETARY AND CONFIDENTIAL: THE INFORMATION CONTAINED IN THIS DRAWING IS THE SOLE PROPERTY OF NYSTROM. ANY REPRODUCTION IN PART OR AS A WHOLE WITHOUT THE WRITTEN PERMISSION OF NYSTROM IS PROHIBITED.