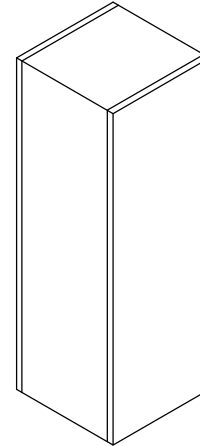
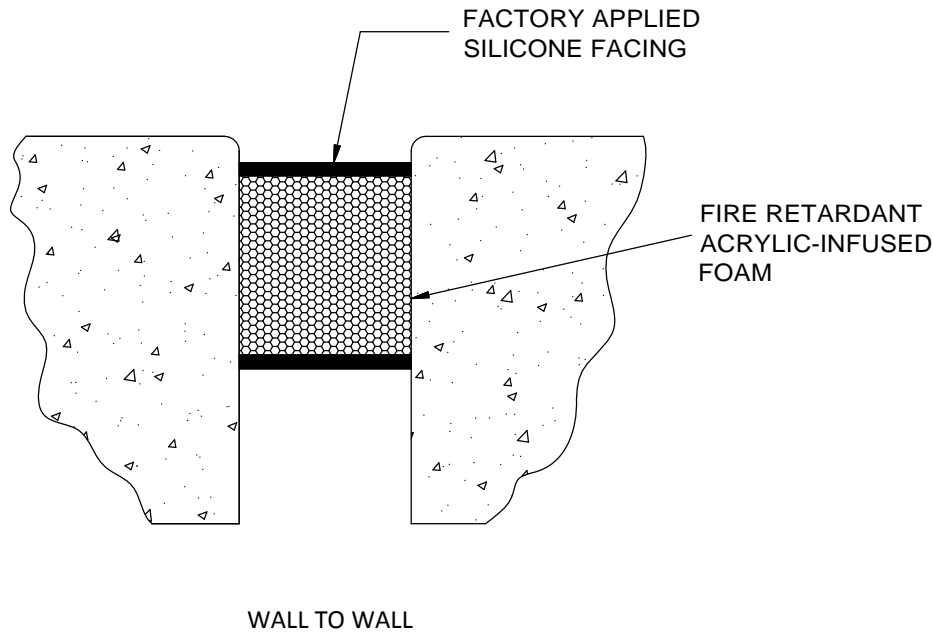



QTT SERIES		
MODEL	JOINT NOMINAL	DEPTH
EJ-QTT-100	1"	2"
EJ-QTT-125	1 1/4"	2"
EJ-QTT-150	1 1/2"	2"
EJ-QTT-175	1 3/4"	2"
EJ-QTT-200	2"	2"
EJ-QTT-225	2 1/4"	2"
EJ-QTT-250	2 1/2"	2"
EJ-QTT-275	2 3/4"	2"
EJ-QTT-300	3"	2"
EJ-QTT-325	3 1/4"	2"
EJ-QTT-350	3 1/2"	2"
EJ-QTT-375	3 3/4"	2"
EJ-QTT-400	4"	2"
EJ-QTT-425	4 1/4"	2"
EJ-QTT-450	4 1/2"	2"
EJ-QTT-475	4 3/4"	2"
EJ-QTT-500	5"	3"
EJ-QTT-525	5 1/4"	3"
EJ-QTT-550	5 1/2"	3"
EJ-QTT-575	5 3/4"	3"
EJ-QTT-600	6"	3"



QTT SERIES COLORS
Limestone
White
Beige
Light Gray
Black
Medium Bronze
Sandstone
Adobe Tan
Dusty Rose
Quarry Red
Charcoal
Colonial White

QTT Product Notes

1. Sound, Draft, Heat, Cold and Dust Blocking Acoustic Joint Filler for Interior, Non-Moving Joints and Gaps
2. Colorized, versatile and ideally suited to filling gaps between the ends of permanent, semi-permanent, or movable partitions, head-of-wall and other conditions
3. Coated on two faces and is ideal for gaps between opaque or solid partitions or walls. The coating can be the same color on both faces or different on each face to coordinate with wall coverings.

CUSTOMER:			
JOB REF:			
LOCATION:			
QTY:			
 9300 73rd Avenue North Minneapolis, MN 55428		TITLE:	
		EJ-QTT SERIES, EJ Seal, Int/Ext, Wall to Wall, Compression, Static Movement, 10 FT Lengths	
NAME	DATE	SIZE	DWG. NO.
DRAWN DKL	7/16/19	A	EJ-QTT SERIES
RELEASED GLN	7/16/19	WEIGHT:	SHEET 1 OF 1