

1/8 Inch Pan

ARCHITECTURAL FLOOR DOOR



Nystrom's Architectural Recessed Floor Door is engineered with a recess to allow for 1/8 inch VCT flooring infill. This design preserves the architectural aesthetics while maintaining a minimal sight line.

FEATURES

MINIMAL SIGHT LINE The recessed design allows for 1/8 inch VCT flooring infill to seamlessly integrate with the surrounding area.

STEEL OPTION Optional 3/16 inch steel for added strength and durability. Standard finish of primed gray powder coat.

DETAILS

LOAD 300psf live load

MATERIAL

- Aluminum: 1/4 inch, mill finish, gray primer on exterior frame (for cast-in only)
- Steel: 3/16 inch, gray primer
- Stainless Steel: 3/16 inch, Type 304 or Type 316

COVER Recessed for 1/8 inch flooring infill

FRAME Angle frame with formed channel frame hinge-side only

INSTALLATION Cast In or Bolt-In

SPRING Coil type 17-7 Stainless Steel enclosed in Type 316 Stainless Steel telescopic tubes

HINGES Heavy duty Type 316 Stainless Steel

HOLD OPEN ARM Type 316 Stainless Steel automatic hold open arm locks cover in open position

LATCH Slam latch Type 316 Stainless Steel with inside lever handle, includes removable 5/16 inch steel square "L" handle and threaded plug

OPTIONS Padlock Hasps, Locks, Finishes, Gasket, Safety Grates, Safety Nets, Safety Rails, Skirting

ORDER GUIDE

MODEL	MATERIAL	WIDTH	X	LENGTH	COVER	INSTALL
FDRP			X			L
	A 1/4" Aluminum	Standard Sizes (W x L)			S Single Door	A Anchor
	P 3/16" Steel, Primed	Single Door		Double Door	D Double Door	B Bolt-in
	S 3/16" Stainless Steel, Type 304	24" x 24"		48" x 48"		
	V 3/16" Stainless Steel, Type 316	30" x 36"		48" x 72"		
		36" x 36"		60" x 60"		
		42" x 42"				

MATERIALS



Aluminum

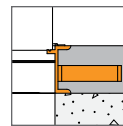


Primed Steel

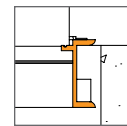


Stainless Steel

FRAME



Angle Frame
Cast-in



Angle Frame
Bolt-in

Additional sizes available, call for more information.