



Direct Service Done Right

NEW!
Retrofit
Roof Hatch



Replace a damaged roof hatch without disturbing the existing roofing system.
Page 5

07 7200
Rooftop Products
Catalog



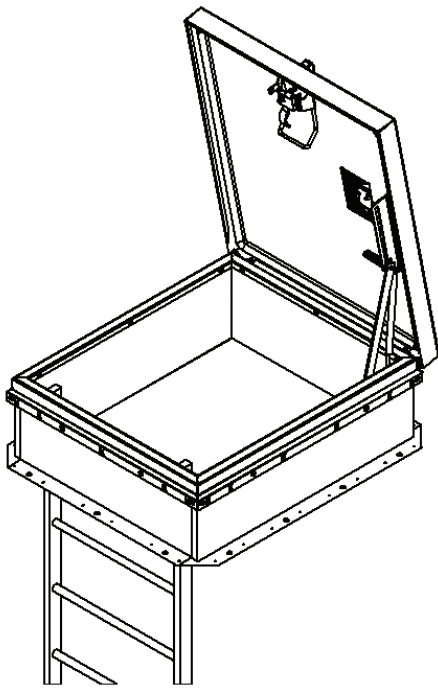
Rooftop Products

Access Type	3
ROOF HATCHES	4-9
ThermalMAX™	4
Retrofit	5
Personnel™	6-7
Security	8
SunLit™	9
Equipment Hatch	10
ROOF HATCH FALL PROTECTION	11-12
Safety Railing	11
Automatic Roof Hatch Opener	12
Ladder Safety Post	13
Grab Bar	13
SMOKE VENTS	14-20
SmokEscape™	14-15
ThermalMAX™	16-17
SunLit™	18-19
AcousticMAX™	20
SMOKE VENT FALL PROTECTION	21-22
Safety Railing	21
Burglar Bars	22
Screen	22
FALL PROTECTION	23-24
Weighted Base Guardrail	23
Perimeter Guardrail	24
EXTERIOR ACCESS DOORS	25
Exterior	25
Coastal Zone	25

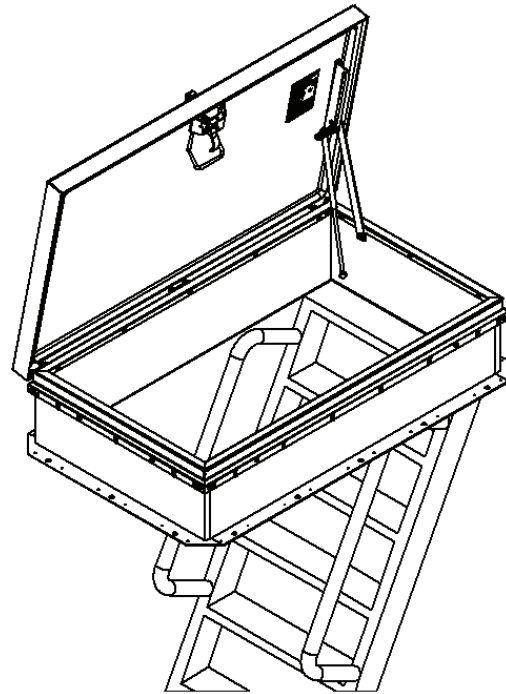
Options

Lock	26
Operation	26
Curb	26
Dome	26
Multi-Wall	26
Powder Coat	27
Anodize	27
Trinar®	27

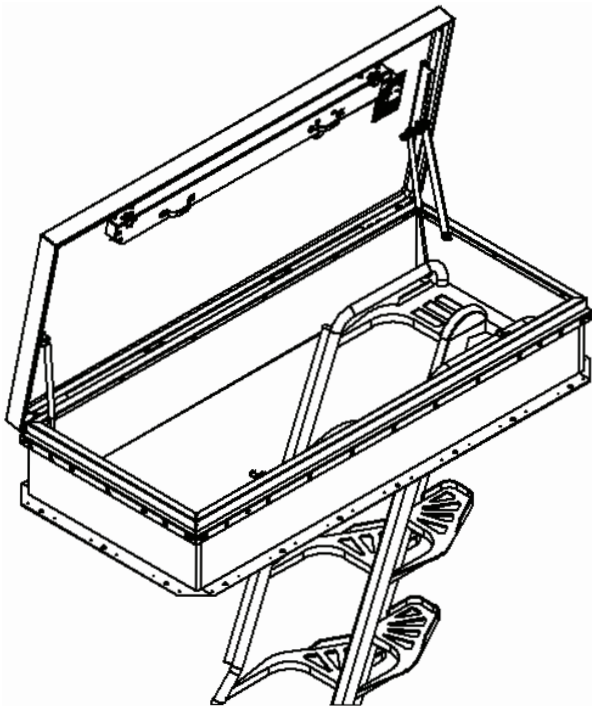
Access



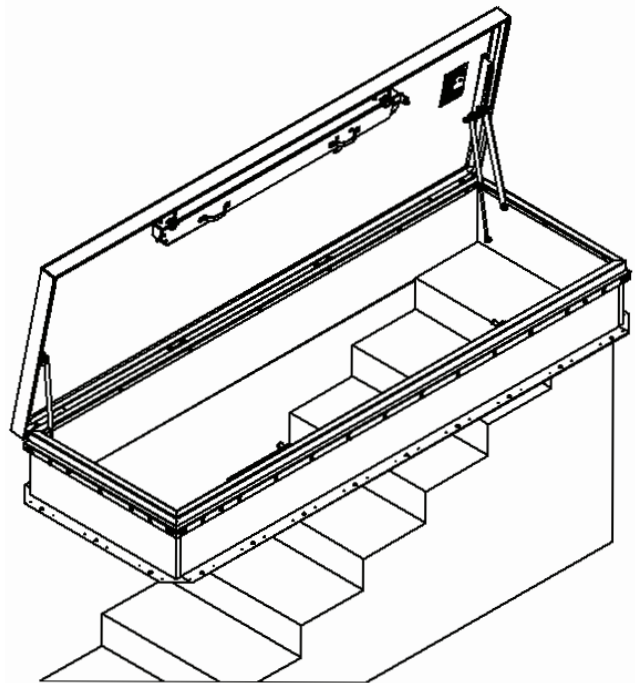
Ladder



Ship Stair



Alternating Tread Stair



Service Stair

ThermalMAX™

ROOF HATCH

The ThermalMAX Roof Hatch sets the new standard for thermally efficient roof hatches. Designed with a thermal break to keep cool-cool and hot-hot, this hatch boasts an R-20 insulation rating making it today's most energy efficient hatch.

BENEFITS

THERMALLY BROKEN Designed with a thermal break to stop the transfer of heat and cold.

IECC COMPLIANCE Code C402 for commercial building envelopes requires $\geq R-5$ in skylight curbs, a gasket weather seal to minimize air leakage and a solar reflectance index ≥ 82 in climate zones 1, 2, 3.

ENHANCED INSULATION Three inch foil faced polyiso insulation provides a thermally efficient design to help maintain building envelope integrity; R-20.



DETAILS

MATERIAL 11 gauge Aluminum

FINISH Mill or powder coat

COVER Formed metal cover withstands a live load of 40psf with a max deflection of $\frac{1}{160}$ the span

CURB Single wall curb with railing ready EZ tab counterflash and mounting flange

INSULATION 3 inch single layer foil faced polyiso in curb and cover; R-20.3

GASKET Extruded EPDM adhesive backed acoustic gasket seal, continuous around curb and cover to ensure a continuous seal

SPRING Gas spring with integrated damper for smooth, controlled lift assistance

HINGE Heavy-duty pintle hinge with stainless steel hinge pin

HOLD OPEN ARM Zinc-plated steel automatic hold open arm with red grip handle locks cover in open position

LATCH Zinc plated steel spring-type slam latch with inside and outside operating turn handles and padlock hasp provisions; 20psf wind uplift

PULL HANDLE Interior safety pull down handle, yellow powder coat, units larger than 60" utilize a two-point latch with handles

STANDARD MODELS

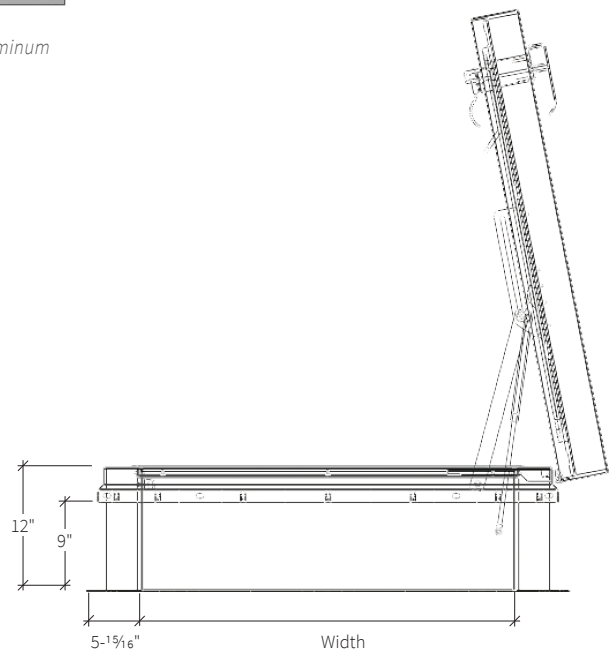
ALUMINUM	SIZE (IN.)	DOOR	CURB	ACCESS
RHTA36X30S1T	36 x 30	Single	Single Wall	Ladder
RHTA36X36S1T	36 x 36	Single	Single Wall	Ladder
RHTA48X48S1T	48 x 48	Single	Single Wall	Ladder
RHTA30X54S1T	30 x 54	Single	Single Wall	Ship Stair or Alternating Tread
RHTA30X96S1T	30 x 96	Single	Single Wall	Service Stair

Additional sizes and options available, call for more information.

FINISHES



Mill
Aluminum



Retrofit

ROOF HATCH

Has your hatch seen better days? Replace it!
Introducing a replacement roof hatch for worn out or damaged hatches that installs on the existing curb.

BENEFITS

EASY INSTALLATION Quickly attaches to existing curbs.

ELIMINATE THE NEED TO DISTURB THE EXISTING ROOFING SYSTEM Reduce labor costs and saves time.

LONG-LASTING SOLUTION Our standard red oxide powder-coat finish provides outstanding corrosion resistance and color retention.

SAFE OPERATION AND EGRESS Low profile 4-inch curb and safety railing ready.



SINGLE POINT LATCH

LATCH Zinc-plated steel latch with exterior and interior turn handles and padlock hasps.

SPRING Gas-spring with damper & coil type spring in telescopic tubes for smooth controlled lift assistance.

HINGE Heavy-duty pintle hinge with stainless steel hinge pin

PULL HANDLE Interior safety pull down handle, yellow powder coat

STANDARD MODELS

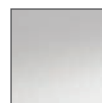
RED STEEL	ALUMINUM	THERMALLY BROKEN	SIZE
RHRG36X30S1T	RHRA36X30S1T	RHRT36X30S1T	36X30
RHRG36X36S1T	RHRA36X36S1T	RHRT36X36S1T	36X36
RHRG30X54S1T	RHRA30X54S1T	RHRT30X54S1T	30X54
RHRG30X96S1T	RHRA30X96S1T	RHRT30X96S1T	30X96

Additional sizes and options available, call for more information.

FINISHES



Mill
Aluminum



2B Matte
Stainless Steel*



ANSI 70 Gray
Powder Coat



High Reflectance White
Powder Coat

DETAILS

MATERIAL

- 11 gauge Aluminum, mill finish
- Steel 14 gauge galvalume, gray powder coat
- Stainless steel

COVER Formed metal cover with liner, stiffened to withstand a live load of 40psf with a max deflection of $\frac{1}{150}$ the span

CURB 4" tall Double wall curb with Stainless steel mounting clips

INSULATION 1 inch polyiso R-6 in curb, 1 inch polystyrene in cover. Optional 3 inch single layer foil faced polyiso in curb and cover; R-20.3.

GASKET Extruded EPDM adhesive-backed gasket seal continuous around cover

HOLD-OPEN ARM Zinc-plated steel automatic hold open arm locks cover in open position

Personnel™

SINGLE POINT LATCH ROOF HATCH

The Personnel Roof Hatch is improved to offer superior weather resistance in an easy to order stock roof hatch. The industry's leading roof hatch is customizable, sized for OSHA compliant safety railings and available in a variety of materials and finishes.

BENEFITS

INDUSTRY'S BEST Tested for small and large missile impact-Class IV (TAS 201-94), Air Pressure & Water Penetration (TAS 202-94), and Cyclic Wind Pressure Loading (TAS 203-94).

SAFETY RAILING READY Safety railings install quick and easy with predrilled counterflash, designed to meet the 42" height requirement per OSHA and IBC.

SUPERIOR POWDER-COAT FINISH The standard powder-coat finish provides outstanding corrosion resistance, superior gloss and color retention.

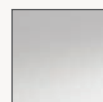
GAS SPRING OPERATION Designed for a smooth one-handed operation that compiles with OSHA safety standards, this roof hatch is easy to open and close.



FINISHES



Mill
Aluminum



2B Matte
Stainless Steel*



ANSI 70 Gray
Powder Coat



High Reflectance White
Powder Coat

DETAILS

MATERIAL

- 11 gauge Aluminum, mill finish
- Steel 14 gauge galvaneal, gray powder coat
- Stainless steel not Miami-Dade or Florida approved

COVER Formed metal cover with liner, stiffened to withstand a live load of 40psf with a max deflection of $\frac{1}{150}$ the span

CURB Single wall curb with EZ tab counterflash and mounting flange

INSULATION 1 inch polyiso R-6 in curb, 1 inch polystyrene in cover

GASKET Extruded EPDM adhesive-backed gasket seal continuous around cover

HOLD-OPEN ARM Zinc-plated steel automatic hold open arm locks cover in open position

CERTIFICATION Miami-Dade County & Florida Product Approved

STANDARD MODELS

GRAY STEEL	WHITE STEEL	ALUMINUM	SIZE (IN.)	ACCESS	LATCH
G3054	W3054	A3054	30 x 54	Ship Stair	Single Point
G3630	W3630	A3630	36 x 30	Ladder	Single Point
G3636	W3636	A3636	36 x 36	Ladder	Single Point
G4848	W4848	A4848	48 x 48	Ladder	Single Point

Additional sizes and options available, call for more information.

SINGLE POINT LATCH

LATCH Zinc-plated steel latch with exterior and interior turn handles and padlock hasps.

SPRING Gas-spring with damper for smooth, controlled lift assistance

HINGE Heavy-duty pintle hinge with stainless steel hinge pin

PULL HANDLE Interior safety pull down handle, yellow powder coat

Personnel™

2-POINT LATCH ROOF HATCH



FINISHES



Mill
Aluminum



2B Matte
Stainless Steel*



ANSI 70 Gray
Powder Coat



High Reflectance White
Powder Coat

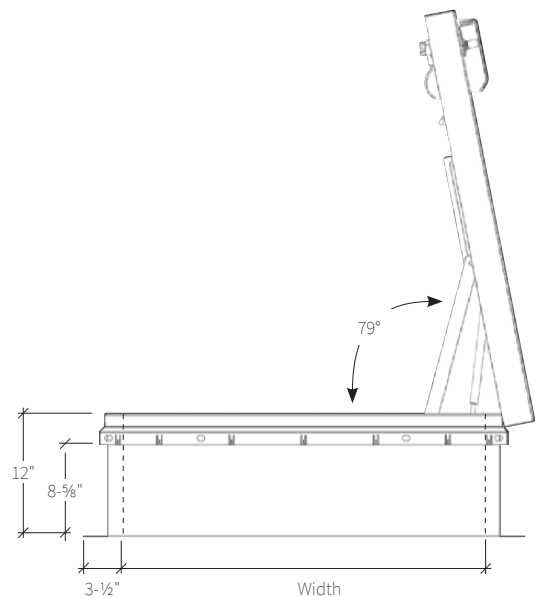
2 POINT LATCH

LATCH Zinc-plated steel latch with exterior and interior turn handles and padlock hasps

STANDARD MODELS

GRAY STEEL	WHITE STEEL	ALUMINUM	SIZE (IN.)	ACCESS	LATCH
G3072	W3072	A3072	30 x 72	Ship Stair	2-Point
G3096	W3096	A3096	30 x 96	Service Stair	2-Point
G3696	W3696	A3696	36 x 96	Service Stair	2-Point

* Not approved for Miami-Dade or State of Florida
Additional sizes and options available, call for more information.



Security

ROOF HATCH

Designed for applications with heightened security, our Security Roof Hatch is constructed of heavy-duty materials and the option for security grade locks. Ideal for prisons, banks, water treatment facilities and other high security buildings.

BENEFITS

SECURITY GRADE MATERIAL Deter forced entry with extra heavy-duty top security grade roof hatches. Constructed of $\frac{3}{16}$ inch steel or $\frac{1}{4}$ inch aluminum.

OPTIONAL LOCKS Add essential security upgrades to your rooftop access with detention lock prep or mortise locks.

OPTIONAL VIEWPORT Gain visibility with the optional bulletproof viewport on roof hatch cover. Ideal for use in prisons and wastewater treatment facilities.



DETAILS

MATERIAL

- Aluminum: $\frac{1}{4}$ inch, mill finish
- Steel: $\frac{3}{16}$ inch, gray powder coat

COVER Formed metal cover with liner, stiffened to withstand a live load of 40psf with a max deflection of $\frac{1}{150}$ the span

CURB Single wall curb with EZ tab counterflash and mounting flange

INSULATION 1 inch polystyrene in cover, 1 inch polyiso around curb

GASKET Extruded EPDM adhesive backed gasket seal, continuous around cover

SPRING Gas-spring with damper for smooth, controlled lift assistance

HINGE Stainless steel tamper-proof

HOLD OPEN ARM Zinc-plated steel automatic hold open arm with red grip handle locks cover in open position

LATCH Zinc-plated steel latch with exterior and interior turn handles and padlock hasp

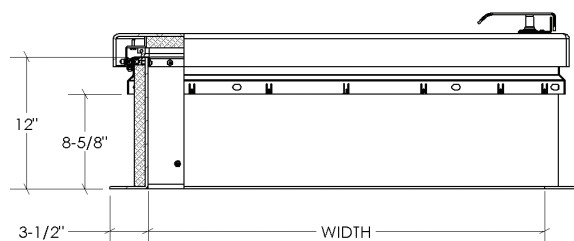
FINISHES



Mill
Aluminum



ANSI 70 Gray
Powder Coat



STANDARD MODELS

GRAY STEEL	ALUMINUM	STEEL + ALUMINUM	SIZE (IN.)	ACCESS	DOOR	CURB
RHSG36X30S1T	RHSA36X30S1T	RHSB36X30S1T	36 x 30	Ladder	Single	Single Wall
RHSG36X36S1T	RHSA36X36S1T	RHSB36X36S1T	36 x 36	Ladder	Single	Single Wall
RHSG30X54S1T	RHSA30X54S1T	RHSB30X54S1T	30 x 54	Ship Stair	Single	Single Wall

Additional sizes and options available, call for more information.

SunLit™

ROOF HATCH

Providing natural daylighting, the SunLit Roof Hatch is engineered with a translucent dome cover that is ideal for use in commercial buildings, retail, schools and more.

BENEFITS

POLYCARBONATE DOME Add the traditional look of a domed skylight with 1/8 inch thick UV coated polycarbonate available in clear, white or bronze colors.

OPTIONAL DOUBLE DOME Increase impact and thermal resistance with double glazed polycarbonate domes.

OPTIONAL INSULATION Add additional thermal performance with fully insulated curbs including 2 inch polyiso insulation; specify – IRD.



DETAILS

COVER Formed aluminum, 11 gauge, mill finish, metal cover with 1/8 inch clear polycarbonate, UV coated dome

CURB Single wall curb with EZ tab counterflash and mounting flange

- Aluminum: 11 gauge, mill finish
- Steel: 14 gauge galvanized, gray powder coat

INSULATION 1 inch fiberglass in cover, 1 inch polyiso around curb

GASKET Extruded EPDM adhesive backed gasket seal continuous around cover

SPRING Gas-spring with damper for smooth, controlled lift assistance

HINGE Zinc-plated steel tamper-proof

HOLD OPEN ARM Zinc plated steel automatic hold open arm with red vinyl grip handle locks cover in open position

LATCH Zinc plated steel latch:

- 20psf wind uplift for lengths ≤60 inch with palm latch
- 90psf wind uplift for lengths >60 inches with 2-point rotary latch

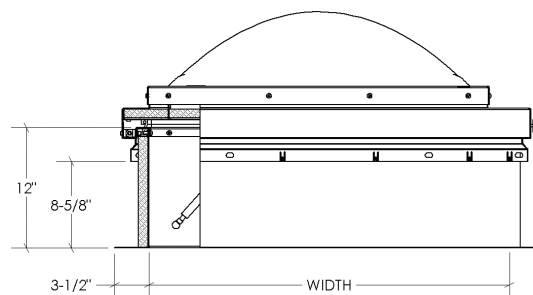
FINISHES



Mill
Aluminum



ANSI 70 Gray
Powder Coat



STANDARD MODELS

ALUMINUM	STEEL + ALUMINUM	SIZE (IN.)	ACCESS	DOOR	CURB
RHLA36X30S1P	RHLB36X30S1P	36 x 30	Ladder	Single	Single Wall
RHLA36X36S1P	RHLB36X36S1P	36 x 36	Ladder	Single	Single Wall

Additional sizes and options available, call for more information.

Equipment

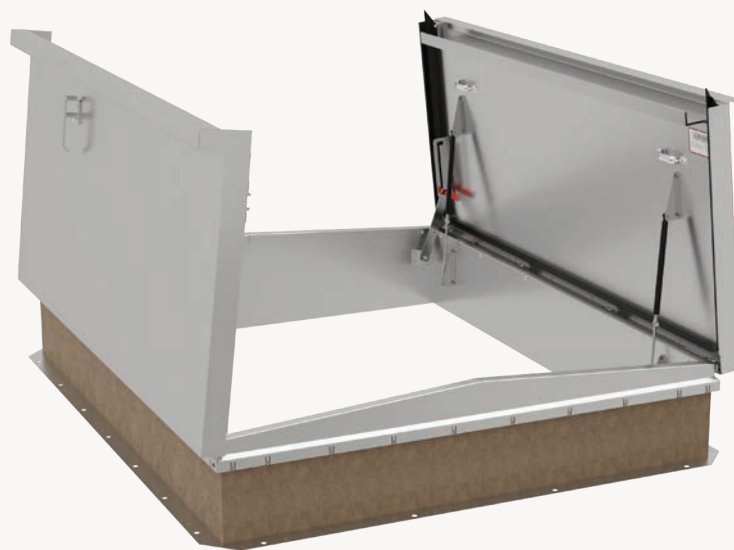
ROOF HATCH

The Equipment Roof Hatch is engineered to accommodate extra large equipment access through roofs. Curb mounting and varied curb heights to meet your needs.

BENEFITS

LARGEST CLEAR OPENING Industry's largest clear opening allows equipment to be installed and serviced through the roof of your building.

STAINLESS STEEL MATERIAL Upgrade to corrosion resistant 304 stainless steel for corrosive environments such as waste water treatment facilities and coastal areas.



DETAILS

MATERIAL

- Aluminum: 11 gauge, mill finish
- Steel: 14 gauge galvalume, gray powder coat
- Stainless Steel: Type 304 14 gauge, 2B matte finish

COVER Formed metal cover withstands a live load of 40psf with a max deflection of $\frac{1}{150}$ the span

CURB Single wall curb with EZ tab counterflash and mounting flange

INSULATION 1 inch polystyrene in cover, 1 inch polyiso around curb

GASKET Extruded EPDM adhesive backed gasket seal continuous around cover

SPRING Gas-spring with damper for smooth, controlled lift assistance

HINGE Zinc-plated steel tamper-proof

HOLD OPEN ARM Zinc-plated steel automatic hold open arm with red vinyl grip handle locks cover in open position

LATCH Zinc-plated steel latch with exterior and interior turn handles and padlock hasps

FINISHES



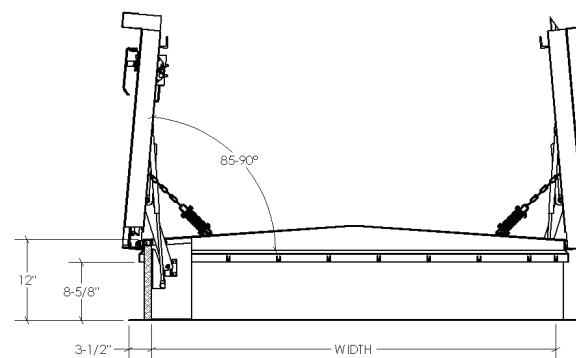
Mill



ANSI 70 Gray
Powder Coat



2B Matte
Stainless Steel



STANDARD MODELS

GRAY STEEL	ALUMINUM	STAINLESS STEEL	SIZE (IN.)	DOOR	CURB
RHEG48X48S1T	RHEA48X48S1T	RHES48X48S1T	48 x 48	Single	Single Wall
RHEG60X60D1T	RHEA60X60D1T	RHES60X60D1T	60 x 60	Double	Single Wall
RHEG72X72D1T	RHEA72X72D1T	RHES72X72D1T	72 x 72	Double	Single Wall
RHEG60X120D1T	RHEA60X120D1T	RHES60X120D1T	60 x 120	Double	Single Wall

Additional sizes and options available, call for more information.

Safety Railing

ROOF HATCH FALL PROTECTION

The OSHA compliant Safety Railing is ideal for new and retrofit applications. The safety railing mounts to the existing roof hatch curb counterflash without penetrating the membrane or curb.

BENEFITS

EASY FIELD INSTALLATION No field cutting required as rails are cut to exact size. Easy assembly fittings and quick mounting on counterflash using a patented nut backing plate.

SELF CLOSING GATE (shown) Designed to automatically close, the gate is constructed with spring loaded hinges to protect against falls.

Comes with standard chain barrier with easy spring clip attachment to guard against falls. (Not OSHA compliant)



Safety Yellow Powder Coat option shown

DETAILS

MATERIAL Rails and posts, aluminum, 1-1/4 inch ID (1.66 inch OD) Schedule 40 pipe

FINISH Powder Coat, Safety Yellow or Mill

FITTINGS Cast aluminum alloy with set screw hold

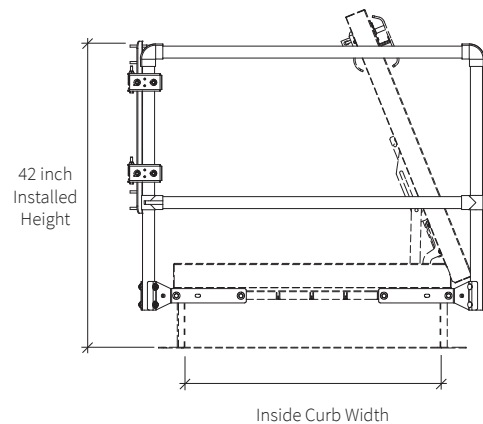
MOUNTING BRACKETS 3/16 inch steel, zinc-plated with nut backing plate

HARDWARE Hex head bolts 3/8 - 16 by 3/4 inch zinc-plated steel

EXIT Must be kept closed when roof hatch door is open

- Self-Closing Gate: Aluminum, 1-1/4 inch ID (1.66 inch OD) Schedule 40 pipe, self-closing with coil spring

COMPLIANCE OSHA 29 CFR 1910.29, 1910.28



STANDARD MODELS

GATE CLOSURE			
YELLOW	MILL	SIZE (IN.)	ACCESS
SRCA36X30FG	SRCA36X30FG	36 x 30	Front
SRCA36X36SG	SRCA36X36SG	36 x 36	Front
SRCA48X48FG	SRCA48X48FG	48 x 48	Front
SRCA30X54SG	SRCA30X54SG	30 x 54	Side
SRCA30X72SG	SRCA30X72SG	30 x 72	Side
SRCA30X96SG	SRCA30X96SG	30 x 96	Side

Additional sizes available, call for more information.

THERMALMAX™ MODELS

GATE CLOSURE			
YELLOW	MILL	SIZE (IN.)	ACCESS
SRBAY36X30FG	SRBA36X30FG	36 x 30	Front
SRBAY36X36FG	SRBA36X36SG	36 x 36	Front
SRBAY48X48FG	SRBA48X48FG	48 x 48	Front
SRBAY30X54SG	SRBA30X54SG	30 x 54	Side
SRBAY30X96SG	SRBA30X96SG	30 x 96	Side

Automatic Roof Hatch Opener

Smart Solutions - Automating the Future of Roof Access

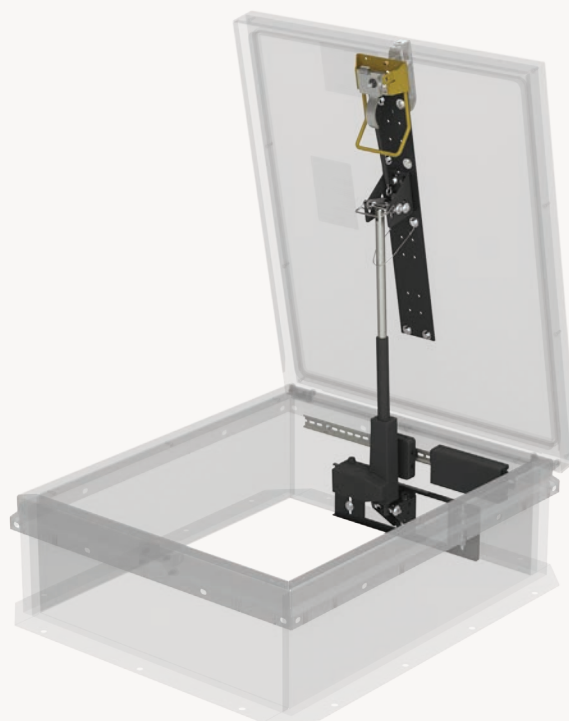
Automatic Roof Hatch Opener (ARHO) allows you to open and close your roof hatch safely from the floor level, providing a safer egress and ingress through the roof hatch.

BENEFITS

RETROFIT OR FACTORY INSTALLED Plug and play retrofit installation or order factory installed on a new roof hatch.

AUTOMATION Automatically open, close, lock, and unlock from the ground level.

COMPLIANCE OSHA/CAL-OSHA



DETAILS

FIT Personnel™ and ThermalMAX™ standard size roof hatches

BRACKET MATERIAL Steel

FINISH Powder Coated Black

LIFT SYSTEM 110V Linear Actuator with Wireless Remote.

HARDWARE Zinc plated

OPTIONS External Stainless Steel Keypad and Back up Battery for power outages.

STANDARD MODELS

PT NUMBER	PERSONNEL	THERMALLY BROKEN
ARHO-30	G3054, A3054	RHTA30X50
ARHO-36	G3630, A3630, G3636, A3636	RHTA36X30, RHTA36X36
ARHO-48	G4848, A4848	RHTA48X48

Additional sizes and options available, call for more information.

Ladder Safety Post

ROOF HATCH FALL PROTECTION

The Safety Post is designed to extend 42 inches above a landing platform to aid safe ladder access through a roof hatch. The spring assisted telescoping design mounts to the top two rungs of a fixed vertical ladder.

DETAILS

MATERIAL 1-½ inch by 1-½ inch by ⅝ inch high strength square tubing with a pull-up loop provided at the upper end to facilitate raising of post.

- Steel: yellow powder coat paint or hot dip galvanized
- Stainless Steel: Type 304, mill
- Aluminum: Mill

BALANCING SPRING Stainless steel constant force spring

HARDWARE Type 316 stainless steel



STANDARD MODELS

MODEL	MATERIAL	FINISH
SPY	Steel	Powder Coat, Yellow
SPG	Steel	Hot Dip Galvanized
SPA	Aluminum	Mill
SPS	Stainless Steel	Mill

Safety Grab Bar

ROOF HATCH FALL PROTECTION

The Safety Grab Bar is engineered to provide safe access through roof hatches. The grab bar mounts to a corner section through the curb counterflashing.

DETAILS

MATERIAL Rails and posts, aluminum, 1-¼ inch ID (1.66 inch OD) Schedule 40 pipe

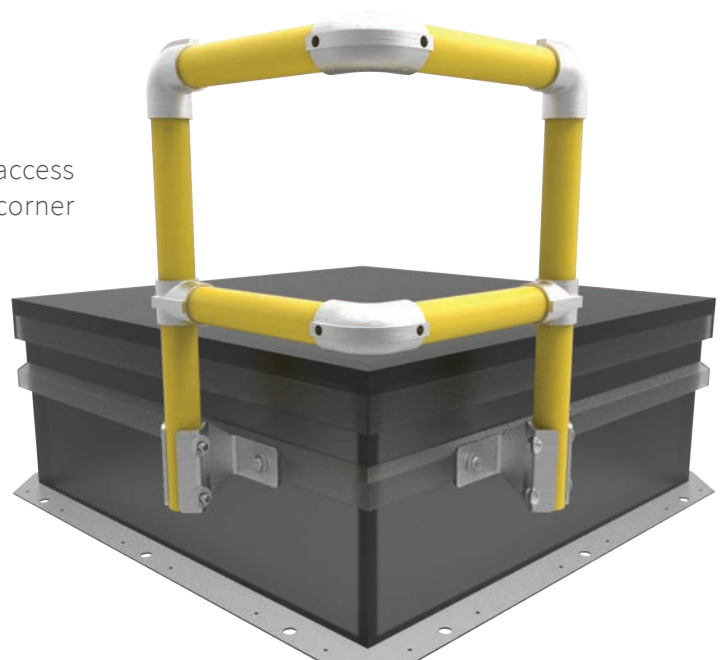
FITTINGS Cast aluminum alloy with set screw hold

MOUNTING BRACKETS ¾ inch steel, zinc-plated with nut backing plate

HARDWARE Hex head bolts ¾ inch - 16 by ¾ inch zinc-plated steel

STANDARD MODELS

MODEL	MATERIAL	FINISH
SGBAY	Aluminum	Powder Coat, Safety Yellow
SGBA	Aluminum	Mill



Safety Yellow Powder Coat option shown

SmokeEscape™ (Single Door)

SMOKE VENT

The Single Door Smoke Escape™ Smoke Vent, engineered with a metal cover, is ideal for factory, storage and warehouse occupancies, and hoistways. The single door smoke vent offers the largest effective vent area.

BENEFITS

GREATER EFFECTIVE VENT AREA Reduce the number of smoke vents required on the roof with the industry's largest 48 x 96 single door smoke vent.

OPTIONAL LOUVERED CURB Add additional ventilation with louvered curbs. Ideal for use in elevator shafts and hoistways.



DETAILS

MATERIAL

- Aluminum: 11 gauge, mill finish
- Steel: 14 gauge galvalume, gray powder coat

COVER Formed metal cover with liner, internally stiffened to withstand a live load of 40psf

CURB Single wall curb with EZ tab counterflash and mounting flange

INSULATION 1 inch Polyiso R-6 in cover and around curb

GASKET Extruded EPDM adhesive backed gasket seal, continuous around cover

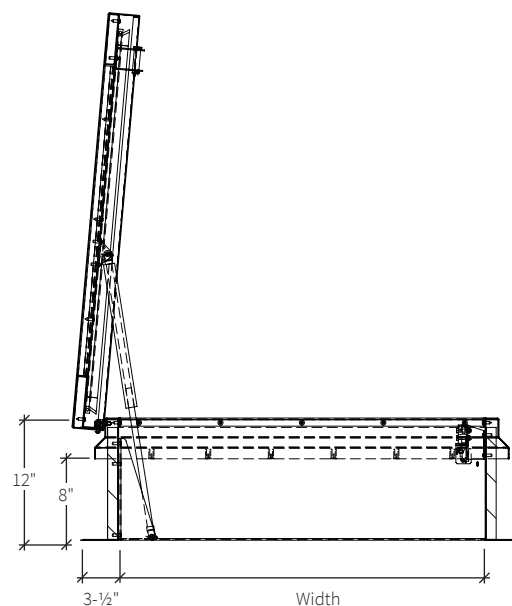
HINGE Heavy-duty pintle hinge with stainless steel hinge pins

SPRING Gas spring with damper opens cover against 10psf snow load

HOLD OPEN ARM Zinc-plated steel automatic hold open arm locks cover in open position

LATCH Zinc-plated steel rotary latch designed to hold covers closed against 30psf wind uplift. Opens manually by external and internal pull cables. Opens automatically with a fusible link at standard temperature 165°F

CERTIFICATIONS UL 793 Listed, FM 4430 Approved 360° fuseable link



ORDER GUIDE

BASE	MATERIAL	WIDTH	X	LENGTH	DOOR	CURB	OPENING	LINK TEMP (°F)	CLOSING	—	OPTIONS
SVS			X							—	
	A Aluminum Curb & Cover	Standard Sizes (W x L)			S Single Door	1 Single Wall	N No Electrical	165 350	R Rooftop Close		SFM FM Labeled
		30" x 30"	36" x 30"	36" x 36"		2 Double Wall	L 24VDC/24VAC	212 360			OP1 Door Position Sensor
	B Galvalume Curb / Aluminum Cover	48" x 48"	48" x 72"	48" x 96"		3 Curb Mount	H 110VAC / 240VAC	280 450			B__ Burglar Bars
	W Galvalume Curb & Cover	Additional size options also available.									

SmokEscape™ (Double + Quad Door)

SMOKE VENT

The standard Double and Quad Door SmokEscape™ Smoke Vent, engineered with metal covers, is ideal for factory, storage and warehouse occupancies.

BENEFITS

SECURE CLOSURE The reliable rotary latch has been third party independently tested to hold smoke vent covers closed against a 135psf wind uplift.

OPTIONAL 2 INCH INSULATION Optimize energy efficiency and upgrade thermal insulation to R-12 with 2 inch of Polyiso in the cover and curb while maintaining UL Listing.



DETAILS

MATERIAL

- Aluminum: 11 gauge, mill finish
- Steel: 14 gauge galvalume, gray powder coat

COVER Formed metal cover with liner, internally stiffened to withstand a live load of 40psf

CURB Single wall curb with EZ tab counterflash and mounting flange

INSULATION 1 inch Polyiso R-6 in cover and around curb

GASKET Extruded EPDM adhesive backed gasket seal, continuous around cover

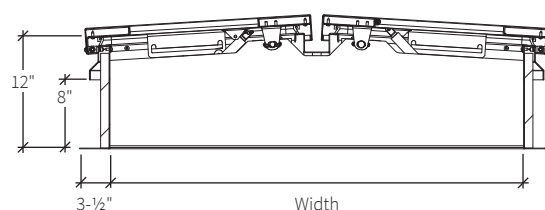
HINGE Heavy-duty pintle hinge with stainless steel hinge pins

SPRING Gas spring with damper opens cover against 10psf snow load

HOLD OPEN ARM Zinc-plated steel automatic hold open arm locks cover in open position

LATCH Zinc-plated steel rotary latch designed to hold covers closed against 90psf wind uplift. Opens manually by external and internal pull cables. Opens automatically with a fusible link at standard temperature 165°F.

CERTIFICATIONS UL 793 Listed, FM 4430 Approved for 360° fuseable link



ORDER GUIDE

BASE	MATERIAL	WIDTH	X	LENGTH	DOOR	CURB	OPENING	LINK TEMP (°F)	CLOSING	—	HOLD OPTIONS
SVS			X							—	
	A Aluminum Curb & Cover B Steel Curb & Aluminum Cover W Steel Curb & Cover	Standard Sizes (W x L) 48" x 48" 48" x 72" 48" x 96" 60" x 60" 60" x 96" 60" x 120" 72" x 72" 72" x 96"			D Double Door Q Quad Door	1 Single Wall 2 Double Wall 3 Curb Mount	N No Electrical L 24VDC/24VAC H 110VAC / 240VAC A Linear Actuator*	165 350 212 360 280 450	R Rooftop Close W Manual Winch L Linear Actuator*		SFM FM Labeled OP1 Door Position Sensor B Burglar Bars
		Additional size options also available.								*Voids UL	

ThermalMAX™ (Single Door)

SMOKE VENT

Stay Safe. Stay Comfortable. Introducing the ultimate solution for energy-efficient fire safety. ThermalMAX™ Thermally Broken Smoke Vent, is engineered for energy efficiency and fire safety in schools, warehouses, high rise buildings, elevator shafts and stairwells.

BENEFITS

R-20+ INSULATION provides superior energy efficiency.

THERMALLY BROKEN design minimizes temperature transfer reducing condensation

UL LISTED for reliable operation and life safety protection of an automatic smoke vent



DETAILS

MATERIAL

Aluminum: 11 gauge, mill finish

COVER Formed metal cover with liner, internally stiffened to withstand a live load of 40psf

CURB Single wall curb with EZ tab counterflash and mounting flange

INSULATION 3 inches Polyiso R-20+ in cover and around curb

GASKET Extruded EPDM adhesive backed gasket seal, continuous around cover

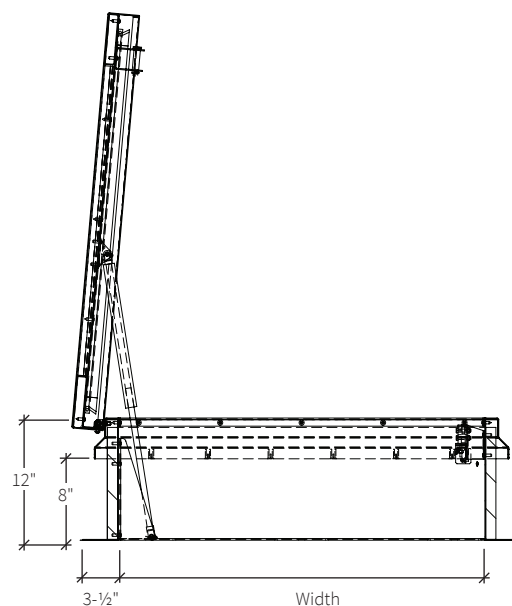
HINGE Heavy-duty pintle hinge with stainless steel hinge pins

SPRING Gas spring with damper opens cover against 10psf snow load

HOLD OPEN ARM Zinc-plated steel automatic hold open arm locks cover in open position

LATCH Zinc-plated steel rotary latch designed to hold covers closed against 90psf wind uplift. Opens manually by external and internal pull cables. Opens automatically with a fusible link at standard temperature 165°F

CERTIFICATION UL 793 Listed



ORDER GUIDE

BASE	MATERIAL	WIDTH	X	LENGTH	DOOR	CURB	OPENING	LINK TEMP (°F)	CLOSING	—	OPTIONS
SVT	A		X							—	
	A Aluminum Curb & Cover	Standard Sizes (W x L) 30" x 30" 36" x 30" 36" x 36" 48" x 48"			S Single Door	1 Single Wall 2 Double Wall	N No Electrical L 24VDC/24VAC H 110VAC / 240VAC	165 360 212 370 280 386 350 450	R Rooftop Close		OP1 Door Position Sensor B Burglar Bars Fall Protection Screen
		Additional size options also available.									

ThermalMAX™ (Double Door)

SMOKE VENT

Stay Safe. Stay Comfortable. Introducing the ultimate solution for energy-efficient fire safety. ThermalMAX™ Double Door Thermally Broken Smoke Vent, is engineered for energy efficiency and fire safety in schools, warehouses, high rise buildings, elevator shafts and stairwells.

BENEFITS

R-20+ INSULATION provides superior energy efficiency.

THERMALLY BROKEN design minimizes temperature transfer reducing condensation

UL LISTED for reliable operation and life safety protection of an automatic smoke vent



DETAILS

MATERIAL

Aluminum: 11 gauge, mill finish

COVER Formed metal cover with liner, internally stiffened to withstand a live load of 40psf

CURB Single wall curb with EZ tab counterflash and mounting flange

INSULATION 3 inches Polyiso R-20+ in cover and around curb

GASKET Extruded EPDM adhesive backed gasket seal, continuous around cover

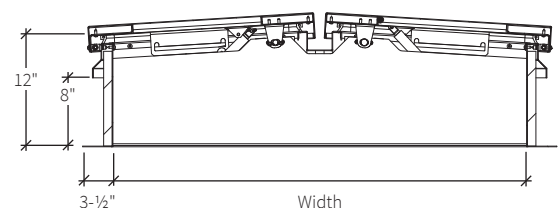
HINGE Heavy-duty pintle hinge with stainless steel hinge pins

SPRING Gas spring with damper opens cover against 10psf snow load

HOLD OPEN ARM Zinc-plated steel automatic hold open arm locks cover in open position

LATCH Zinc-plated steel rotary latch designed to hold covers closed against 90psf wind uplift. Opens manually by external and internal pull cables. Opens automatically with a fusible link at standard temperature 165°F.

CERTIFICATION UL 793 Listed



ORDER GUIDE

BASE	MATERIAL	WIDTH	X	LENGTH	DOOR	CURB	OPENING	LINK TEMP (°F)	CLOSING	—	HOLD OPTIONS
SVT	A		X							—	
	A Aluminum Curb & Cover	Standard Sizes (W x L) 48" x 48" 48" x 72" 48" x 96" 60" x 60" 60" x 96" 60" x 120" 72" x 72" 72" x 96"			D Double Door	1 Single Wall 2 Double Wall	N No Electrical L 24VDC/24VAC H 110VAC / 240VAC	165 360 212 370 280 386 350 450	R Rooftop Close		OP1 Door Position Sensor B Burglar Bars Fall Protection Screen
		Additional size options also available.							*Voids UL		

SunLit™ (Single Door)

SMOKE VENT

Providing natural daylighting, the Single Door SunLit™ Smoke Vent is engineered with a translucent cover. This smoke vent includes a clear or color tinted multiwall panel or optional domes that are ideal for use in factory, storage and warehouse commercial buildings.

BENEFITS

MULTIWALL LIGHT TRANSMISSION Add optional color panels (pg. 25) to change natural daylighting characteristics.

OPTIONAL DOME Add the traditional look of a domed skylight with 1/8 inch thick UV coated polycarbonate available in clear, white or bronze colors.



DETAILS

COVER Extruded aluminum frame, 11 gauge, mill finish, with 5/8 inch 3 layer structural multiwall R-3 in white polycarbonate. Cover withstands a live load of 40psf.

CURB Single wall curb with EZ tab counterflash and mounting flange

- Aluminum: 11 gauge, mill finish
- Steel: 14 gauge galvalume, gray powder coat

INSULATION 1 inch Polyiso R-6 around curb perimeter

GASKET Extruded EPDM adhesive backed gasket seal, continuous around cover

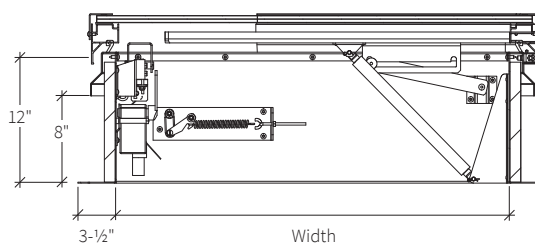
HINGE Heavy-duty pintle hinge with stainless steel hinge pin

SPRING Gas spring damper opens cover against 10psf snow load

HOLD OPEN ARM Zinc-plated steel automatic hold open arm locks cover in open position

LATCH Zinc-plated steel rotary latch designed to hold covers closed against 30psf wind uplift. Opens manually by external and internal pull cables.

CERTIFICATIONS UL 793 Listed



ORDER GUIDE

BASE	MATERIAL	WIDTH	X	LENGTH	DOOR	CURB	OPENING	LINK TEMP (°F)	CLOSING	—	OPTIONS
SVL			X							—	
	A Aluminum Curb & Cover B Galvalume Curb / Aluminum Cover	Standard Sizes (W x L) 30" x 30" 36" x 30" 36" x 36" 48" x 48" 48" x 72" 48" x 96"			S Single Door	1 Single Wall 2 Double Wall 3 Curb Mount	N No Electrical L 24VDC/24VAC H 110VAC / 240VAC	165 350 212 360 280 450	R Rooftop Close	—	Dome, Polycarb. LPW White LPC Clear Double Dome, Polycarb. LPWW White/White LPCW Clear/White LPBC Clear/Bronze Multiwall LMC Clear LMZ Bronze LMB Blue LMG Green
		Additional size options also available.									

SunLit™ (Double + Quad Door)

SMOKE VENT

The Double and Quad Door SunLit™ Smoke Vent is engineered with translucent covers using polycarbonate for the added sustainability benefit of natural daylighting. With options like color panels, and electrical operation, Nystrom is sure to meet your building sustainability and fire and life safety needs.

BENEFITS

MULTIWALL LIGHT TRANSMISSION Add optional color panels (pg. 25) to change natural daylighting characteristics.

OPTIONAL DOME Add the traditional look of a domed skylight with 1/8 inch thick UV coated polycarbonate available in clear, white or bronze colors.



DETAILS

COVER Extruded aluminum frame, 11 gauge, mill finish, with 5/8 inch 3 layer structural multiwall R-3 in white polycarbonate. Cover withstands a live load of 40psf.

CURB Single wall curb with EZ tab counterflash and mounting flange

- Aluminum: 11 gauge, mill finish
- Steel: 14 gauge galvanized, gray powder coat

INSULATION 1 inch Polyiso R-6 around curb perimeter

GASKET Extruded EPDM adhesive backed gasket seal, continuous around cover

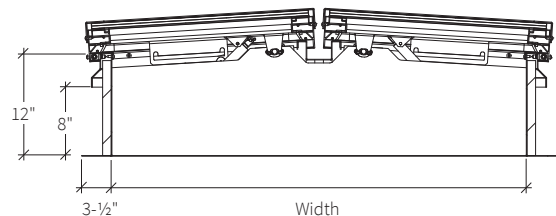
HINGE Heavy-duty pintle hinge with stainless steel hinge pin

SPRING Gas spring damper opens cover against 10psf snow load

HOLD OPEN ARM Zinc-plated steel automatic hold open arm locks cover in open position

LATCH Zinc-plated steel rotary latch designed to hold covers closed against 90psf wind uplift. Opens manually by external and internal pull cables.

CERTIFICATIONS UL 793 Listed



ORDER GUIDE

BASE	MATERIAL	WIDTH	X	LENGTH	DOOR	CURB	OPENING	LINK TEMP (°F)	CLOSING	—	OPTIONS
SVL			X							—	
	A Aluminum Curb & Cover	Standard Sizes (W x L)			D Double Door	1 Single Wall	N No Electrical	165 350	R Rooftop Close		Dome, Polycarb.
		48" x 48"	48" x 72"	48" x 96"							LPW White
	B Galvanneal Curb / Aluminum Cover	60" x 60"	60" x 96"	60" x 120"	Q Quad Door	2 Double Wall	L 24VDC / 24VAC	212 360	W Manual Winch		LPC Clear
		72" x 72"	72" x 96"			3 Curb Mount	H 110VAC / 240VAC	280 450			Double Dome, Polycarb.
		Additional size options also available.									LPWW White/White
											LPCW Clear/White
											LPBC Clear/Bronze
											Multiwall
											LMC Clear
											LMZ Bronze
											LMB Blue
											LMG Green

AcousticMAX™

SMOKE VENT

Block the intrusion of exterior environmental noise while providing safety and security with the industry's best automatic Acoustical Smoke Vent. Perfect for theaters and performing arts centers; every detail is designed with precision.

BENEFITS

SUPERIOR SOUND CONTROL Industry's best sound ratings designed to keep out unwanted noises ensuring acoustical integrity when all you want to hear is the performance

PREFINISHED BLACK INTERIOR Eliminate field painting hassle with the prefinished interior that seamlessly integrates into the ceiling



DETAILS

SOUND RATING(S) Independent third party tested to ASTM E90 and ASTM E1332

- SVZ: STC 50 - OITC 47
- ISO 140-18 Rainfall 36.7 dB
- SVY: STC 50 - OITC 39

MATERIAL

- SVZ 12 gauge galvalume steel; powder coat
- SVY 14 gauge galvalume steel; powder coat

FINISH Gray exterior cover with black interior liner and black curb

COVER Metal with liner, withstands a live load of 40psf with a max deflection of 1/150 the span

CURB Double wall curb with EZ tab counterflash and mounting flange

INSULATION Mineral wool and sound mat in cover and curb

- SVZ: Total R-16.8
- SVY: Total R-12.6

GASKET Extruded EPDM adhesive backed gasket seals

HINGE Stainless steel heavy duty pintle hinge

SPRING Gas spring with damper opens cover against 10psf snow load

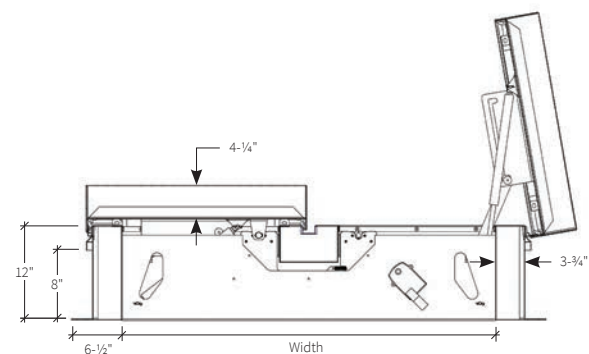
HOLD OPEN ARM Zinc-plated steel automatic hold open arm locks cover in open position

LATCH Zinc-plated steel rotary latch designed to hold covers closed against 90psf wind uplift

OPERATION Opens automatically with a fusible link and manual pull handles

CERTIFICATIONS UL 793 Listed, FM 4430

Approved for 360° fuseable link, and IBC1207 Compliant



ORDER GUIDE

BASE	RATING	MATERIAL	WIDTH	X	LENGTH	DOOR	CURB	OPENING	LINK TEMP (°F)	CLOSING	—	OPTIONS
SV		G		X							—	
	Z STC 50 - OITC 47	G Galvalume Steel	Standard Sizes (W x L) 48" x 48" 48" x 72" 48" x 96" 60" x 60" 60" x 96" 60" x 120" 72" x 72" 72" x 96"			D Double Door Q Quad Door	2 Double Wall 3 Curb Mount	N No Electrical L 24VDC/24VAC H 110VAC / 240VAC A Linear Actuator*	165 350 212 360 280 450	R Rooftop Close W Manual Winch L Linear Actuator*		SFM FM Labeled OP1 Door Position Sensor B Burglar Bars
	Y STC 50 - OITC 39		<i>Additional size options also available.</i>									

*Voids UL

Safety Railing

SMOKE VENT FALL PROTECTION

The OSHA compliant Safety Railing is ideal for new and retrofit applications. The safety railing mounts to the existing smoke vent curb counterflash without penetrating the membrane or curb.

BENEFITS

FALL PROTECTION In accordance with OSHA regulations, the safety railing is engineered to guard smoke vent openings to protect against falls.

EASY FIELD INSTALLATION No field cutting required as rails cut to exact size. Easy assembly fittings and quick mounting on counterflash through curb.



Safety Yellow Option Shown

DETAILS

MATERIAL Rails and posts, aluminum, 1-1/4 inch ID (1.66 inch) Schedule 40 pipe

FINISH Powder Coat, Safety Yellow or Mill

FITTINGS Cast aluminum alloy with set screw hold

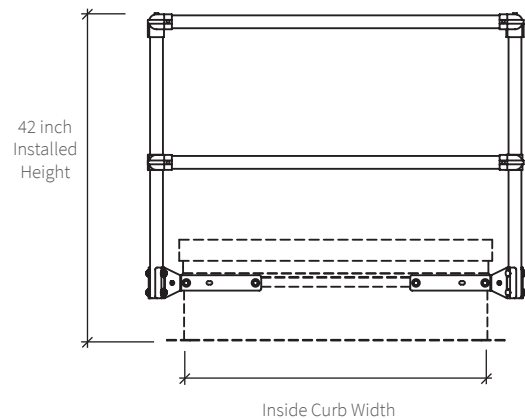
MOUNTING BRACKETS 3/16 inch steel, zinc plated with nut backing plate

HARDWARE Hex head bolts 3/8 inch - 16 x 3/4 inch zinc-plated steel

COMPLIANCE OSHA 29 CFR 1910.28 and 1910.29

ORDER GUIDE

4-SIDED		2-SIDED	
MODEL	SIZE (IN.)	MODEL	SIZE (IN.)
SRVAY36X30NN	36 x 30	SRVAY48XNNTN	48
SRVAY36X36NN	36 x 36	SRVAY60XNNTN	60
SRVAY48X48NN	48 x 48	SRVAY72XNNTN	72
SRVAY48X96NN	48 x 96		
SRVAY60X96NN	60 x 96		
SRVAY60X120NN	60 x 120		
SRVAY60X144NN	60 x 144		
SRVAY72X144NN	72 x 144		



Burglar Bars

SMOKE VENT FALL PROTECTION

Burglar Bars, a smoke vent accessory, are designed for security and safety and to prevent unauthorized entry. Engineered for each smoke vent, these bars are available on new installations as a factory installed option.

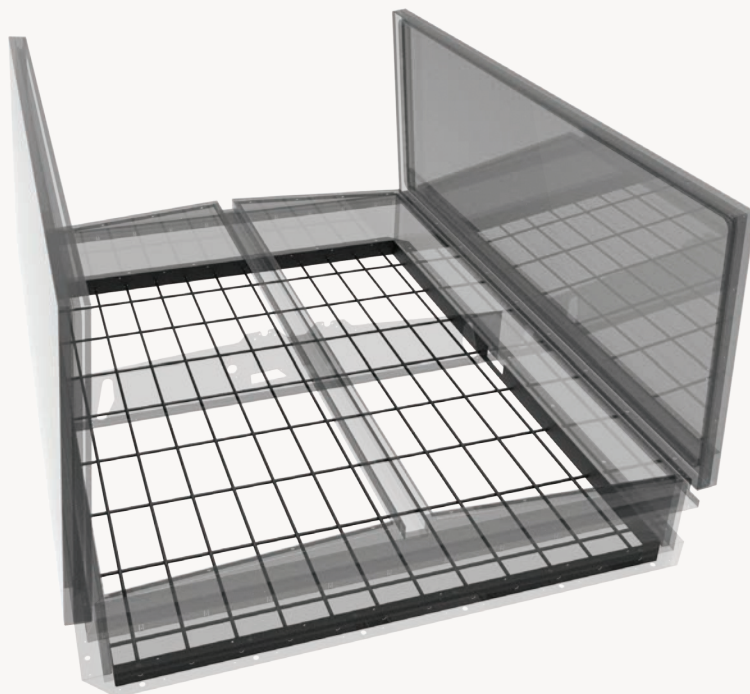
DETAILS

MATERIAL Steel, 1/2 inch or 3/4 inch diameter

SPACING 6 inch by 6 inch, 6 inch by 12 inch or custom

ORDER GUIDE

MODEL	DIAMETER	SPACING
1A	1/2"	6" x 12"
1B	1/2"	6" x 6"
2A	3/4"	6" x 12"
2B	3/4"	6" x 6"



Screen

SMOKE VENT FALL PROTECTION

The Fall Protection Screen, a smoke vent safety product, is designed to aid in fall protection. This sturdy screen, spaced 4 inch apart with fully welded intersections is available on new installations as a factory install option on each smoke vent. Third party tested with a drop test of 400 pounds of 30 inch diameter sandbag from 42 inches.

DETAILS

MATERIAL Steel, 0.163 inch diameter

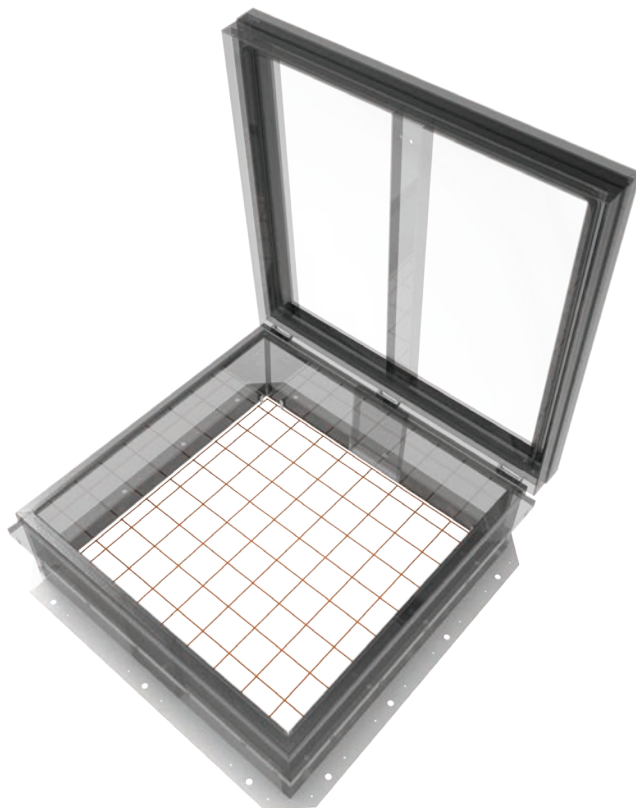
SPACING 4 inch by 4 inch

COMPLIANCE OSHA 1926.502c and 1910.28

Only available in 48"x96".

ORDER GUIDE

MODEL	DIAMETER	SPACING
3C	0.163"	4" x 4"



Weighted Base

GUARDRAIL FALL PROTECTION

The OSHA compliant portable railing system is designed to keep people safe while working on rooftops and other structures. No need for tie-off points and expensive safety equipment.

BENEFITS

PORTABLE BASE The weighted base is designed to be portable and installed where permanent mounting is not an option

EASY INSTALLATION The posts and rails are easy to assemble and install.

COORDINATING COLORS The system comes with a standard powder coat finish that is available in a wide range of colors to match your building's exterior.



DETAILS

MATERIALS

- Weighted Base and Post Assembly: Steel, 1-1/4 inch ID (1.66 inch OD) Schedule 40 pipe
- Horizontal and Corner Rails: 1-5/8 inch by .065 inch Steel

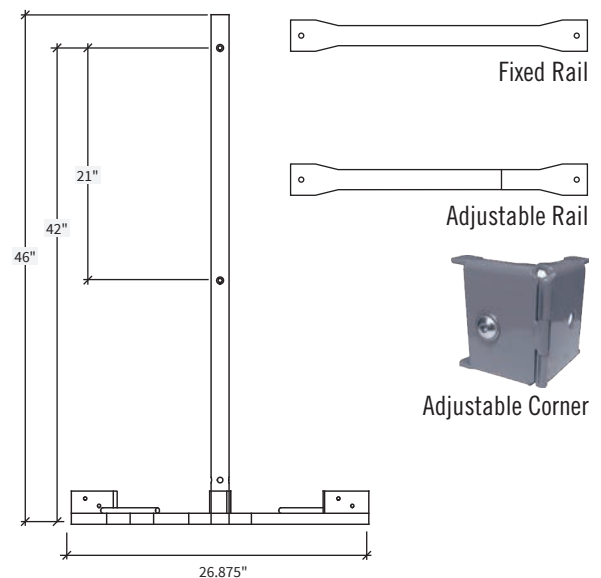
FINISH Powder Coat

RAIL FASTENERS 3/8 inch - 16 by 1 inch zinc-plated steel

COMPLIANCE OSHA 29 CFR 1910.28 and 1910.29

MODELS

MODEL	DESCRIPTION	MATERIAL + FINISH
GR-WBP-ASM-RN	Weighted Base and Post	Cast Iron, Steel, Powder Coat
GR-WB-000	Weighted Base, 27"x27"	Cast Iron
GR-WBPR-004-RN	One 4' Rail	Steel, Powder Coat
GR-WBPR-005-RN	One 5' Rail	Steel, Powder Coat
GR-WBPR-006-RN	One 6' Rail	Steel, Powder Coat
GR-WBPR-008-RN	One 8' Rail	Steel, Powder Coat
GR-WBPR-010-RN	One 10' Rail	Steel, Powder Coat
GR-WBPR-ADJ-043-RN	One Small Adjustable Rail, 29"-43"	Steel, Powder Coat
GR-WBPR-ADJ-070-RN	One Medium Adjustable Rail, 43"-70"	Steel, Powder Coat
GR-WBPR-ADJ-120-RN	One Large Adjustable Rail, 70"-120"	Steel, Powder Coat
GR-WB-AC	One Adjustable Corner Bracket	Steel, Powder Coat



Perimeter

GUARDRAIL FALL PROTECTION

The OSHA compliant Permanent Guardrail system's unique bracket installs under the drip edge, coping cap, gravel stop or gutter system without penetrating the roofing system and allows for retro fit installations.

BENEFITS

PERMANENT MOUNT The edge mounted guardrail system does not penetrate the roof membrane and installs under the coping and roof flashing.

EASY INSTALLATION The posts and rails are easy to assemble and install.

COORDINATING COLORS The system comes with a standard powder coat finish that is available in a wide range of colors to match your building's exterior.



DETAILS

MATERIALS

- Post and Bracket Assembly: Steel, 1-1/4 inch ID (1.66 inch OD) Schedule 40 pipe
- Horizontal and Corner Rails: 1-5/8 inch by .065 inch Steel

FINISH Powder Coat

STRUCTURAL FASTENERS

- Wood: RSS structural screws
- Concrete: Caliburn PH concrete pan head screw

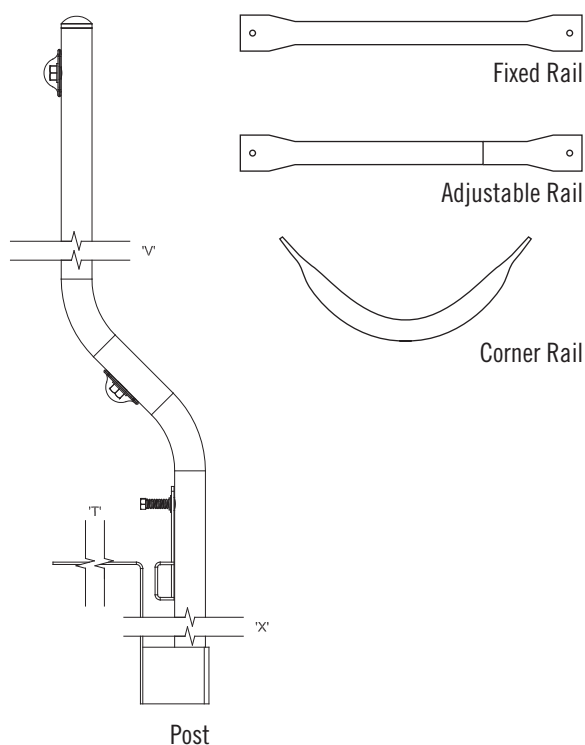
RAIL FASTENERS 3/8 inch - 16 x 1 inch zinc-plated steel

COMPLIANCE OSHA 29 CFR 1910.28 and 1910.29

STANDARD MODELS

MODEL	DESCRIPTION	DIMENSION	MATERIAL + FINISH
FP-GRPLG	Edge Mount Post	42"	Steel, Powder Coat
FP-GRF60	Fixed Rail*	5'	Steel, Powder Coat
FP-GRF96	Fixed Rail*	8'	Steel, Powder Coat
FP-GRF118	Fixed Rail*	9'- 10"	Steel, Powder Coat
FP-GRA43	Adjustable Rail*	2'-5" to 3'-9"	Steel, Powder Coat
FP-GRA70	Adjustable Rail*	3'-9" to 5'-10"	Steel, Powder Coat
FP-GRA120	Adjustable Rail*	5'-10" to 10'	Steel, Powder Coat
FP-GRC12	Corner Rail*	12"	Steel, Powder Coat

*Note: Rails and corners are sold in sets of 2.



Exterior

ACCESS DOOR

The Exterior Access Door provides efficient access from the exterior of your building without compromising security or weather resistance.

BENEFITS

COMPATIBLE WITH BUILDING KEY With the mortise lock prep option, you can match the mortise cylinder to that of your building's other access points.

TEMPERATURE CONTROL With 1.6 inch polyurethane insulation, the Exterior Door is constructed to protect your building from the harshest climates.



For additional information on Exterior Access Doors, see Access Door Catalog or visit babcockdavis.com.

Coastal Zone

EXTERIOR ACCESS DOOR

The Coastal Zone Exterior Access Door is the industry's only high velocity and impact tested door. With a design pressure of +/- 80psf, this door is sure to withstand mother nature's toughest storms.

BENEFITS

IMPACT, AIR + WIND PRESSURE TESTED Independent lab tested to TAS 201, 202 and 203 assures the best protection against the harshest elements.

TEMPERATURE CONTROL With 1.6 inches of closed cell polyurethane insulation, the Coastal Zone Exterior Door delivers a R-11 thermal value.

CUSTOM SIZES Available in 1/4 inch increments from 18 inches by 18 inches to 36 inches by 48 inches maximum.

COMPLIANCE Florida Product Approval FL22309-R2.



Locks (Roof Hatch)



Detention Lock



Mortise Operated Deadbolt

MODEL	TYPE	BRAND	DESCRIPTION	LOCK ACCESS
D11	Detention	Brinks 7016	Keyed Lock	Interior + Exterior
D5A	Detention	Southern Steel 1010AM	Prep Only	Interior + Exterior
D2A	Detention	Southern Steel 1010A	Prep Only	Interior Only
D12	Detention	Brinks 7016	Keyed Lock	Interior Only
MB4	Mortise	Best Cylinder/ Schlage Deadbolt	Non-keyed with Plastic Core	Interior + Exterior
MB5	Mortise	Best Cylinder/ Schlage Deadbolt	Non-keyed core lock Interior	Interior
MB6	Mortise	Best Cylinder/ Schlage Deadbolt	Non-Keyed	Interior + Exterior

Additional locks and options available, call 888.412.3726 for more information.

Operations (Smoke Vent)

OPENING



Fusible Link



Electrical
H - 110/120
L - 24



Pull Handle
(External & Internal)

CLOSING



Rooftop Close
R



Manual Winch
W



Linear Actuator
L

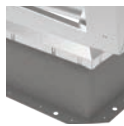
SECURITY



Door Position
Sensor OP1

Also available
on Roof Hatches

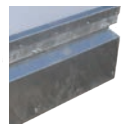
Curbs



Single
Wall
1



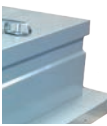
Double
Wall
2



Curb
Mount
3



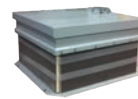
No
Counterflash
4



Apron
Mount
5



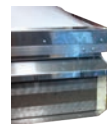
1-1/2"
Curb Mount
6



**CURB
HEIGHT**
6 inch - 48 inch
H6 - H48



**PITCH
CORRECTION**
Match Roof
Pitch
P__

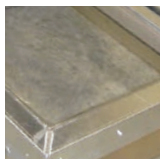


INSULATION
2 inch Polyiso
IRR



VENTILATION
Louvered Curb
V33

Domes (Roof Hatch + Smoke Vent)



Clear
(Standard)



White
LPW



Bronze
LPZ

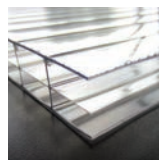
COLOR	GLAZING	LIGHT TRANSMISSION	SOLAR FACTOR	R-VALUE
Clear	Single	92%	85%	1.25
White	Single	56%	56%	1.25
Bronze	Single	27%	35%	1.25
Clear/Clear	Double	92%	85%	2.0
Clear/White	Double	56%	56%	2.0

Note: Clear single glazing is the standard option, other options have additional charges and may require longer lead times.

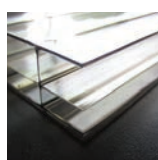
Multiwall (Smoke Vent)



White
(Standard)



Clear
LMC



Bronze
LMZ

COLOR	LIGHT TRANSMISSION	SOLAR FACTOR	SHADING COEFFICIENT
Clear	74%	75%	0.86
White	52%	63%	0.72
Bronze	37%	57%	0.65

Note: White is the standard color, all other colors have additional charges and may require longer lead times.

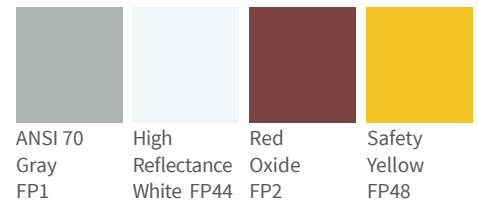
Powder Coat

FINISH OPTION

Polyester based powder coatings demonstrate superior gloss and color retention in a variety of outdoor environments. Powder coat provides outstanding corrosion resistance and exhibits excellent mechanical properties.

Custom colors available, call 800.547.2635 for more information.

STOCK COLORS

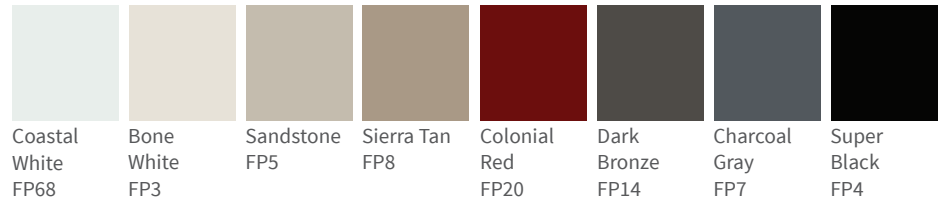


APPLICATION Steel or Aluminum

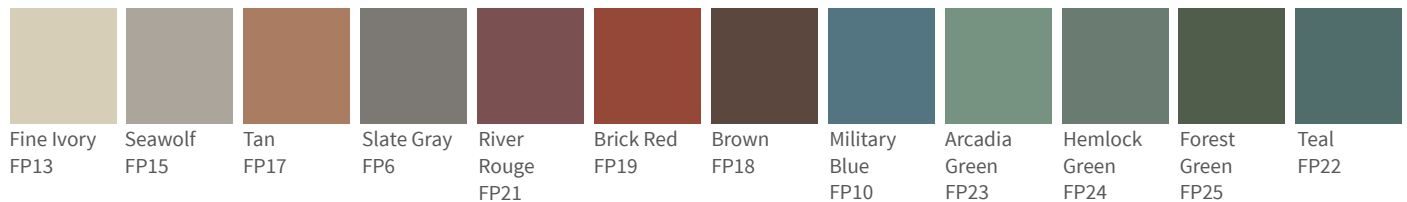
WARRANTY 5 year

NOTE ANSI 70 gray and high reflectance white are the standard colors of steel roof hatches and steel smoke vents, all other colors have additional charges and may require longer lead times. Mill finish is standard on aluminum roof hatches and smoke vents.

STANDARD COLORS Readily available, but not stocked by Nystrom.



SPECIAL ORDER Common industry colors, special order.



This color chart is for reference only and is not to be used for final color / material matching. Nystrom is not responsible or liable for color matches made with this chart.

Anodize

FINISH OPTION

Protective and decorative anodizing applied to aluminum creates a corrosion resistant finish.

The clear finish (FA1) uses sulfuric Class II coating with a 0.4-0.7 mil thickness.

The clear finish (FA2) and integral color uses Duranodic with 0.7 mil and thicker.

APPLICATION Aluminum

WARRANTY 5 year



Trinar®

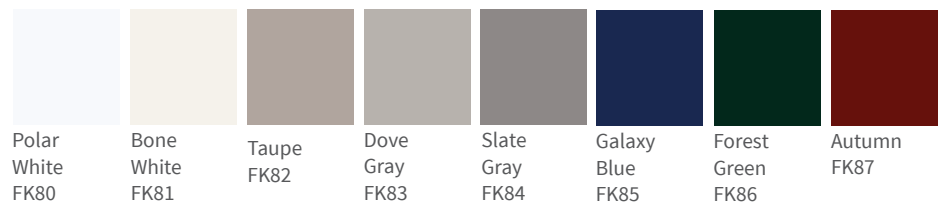
FINISH OPTION

Trinar® is a high performance fluoropolymer coating with 70% Polyvinylidene Fluoride (PVDF) and provides maximum resistance against color fade and chalking. The most durable and long lasting finish in the industry; meets or exceeds AAMA 620/621 and AAMA 2605.

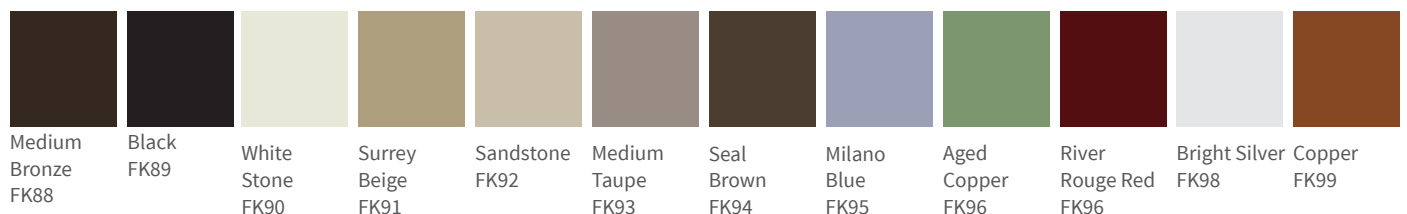
APPLICATION Aluminum

WARRANTY 10 year (standard) or 20 year

STANDARD COLORS



SPECIAL ORDER Common industry colors, special order.





Direct Service Done Right

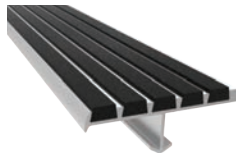
Divisions 5, 7, 8, 10 + 12

We're dedicated to giving our customers customized service, solutions, and products in the manner that works for them. Hassle-free.

STAIR TREADS + NOSINGS

05 5000

- Luminous Egress
- Ribbed
- Full Bar
- Inset
- Two-Part
- Renovation
- Cast
- EcoTread™
- Stair Nosing Guards™



FALL PROTECTION

05 5213 / 07 7200

- Weighted Base
- Guardrail
- Perimeter Guardrail
- Corral Guardrail



ROOF HATCHES

07 7200

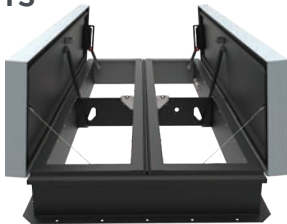
- Standard
- Thermally Broken
- Daylighting
- Security
- Equipment
- Fall Protection



SMOKE VENTS

07 7200

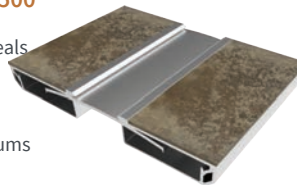
- Standard
- Daylighting
- Acoustical
- Thermally Broken
- Fall Protection



PREFORMED JOINT SEALS + EXPANSION JOINT SYSTEMS

07 9100 + 07 9500

- Compression Seals
- Floor
- Wall + Ceiling
- Roof
- Parking + Stadiums
- Fire Barrier



ACCESS DOORS

08 3100

- Non-Rated
- Fire Rated
- Security
- Specialty
- Exterior
- HVAC



FLOOR DOORS

08 3483

- Fire-Rated
- Drainable
- Non-Drainable
- Retrofit
- Well Hatches
- Safety Accessories



ENTRANCE MATS + FRAMES ENTRANCE FLOOR GRILLES

12 4813 + 12 4816

- Architectural + Rigid Grilles
- Roll-Up Grilles
- Roll-Up Mats
- Vinyl Mats



FIRE PROTECTION CABINET + FIRE EXTINGUISHERS

10 4413 + 10 4416

- Fire Cabinets
- Portable Fire Extinguishers
- Detention Cabinets
- Fire Blanket Cabinets
- Accessories



LUMINOUS EGRESS PRODUCTS

10 1443

- Handrail Markings
- Demarcation Markings
- Obstacle Markings
- Signage



9300 73rd Avenue North
Minneapolis, MN 55428

Phone (800) 547-2635
Fax (866) 900-1959

info@nystrom.com



nystrom.com

Visit [nystrom.com](https://www.nystrom.com) for the latest version of this document and more information.