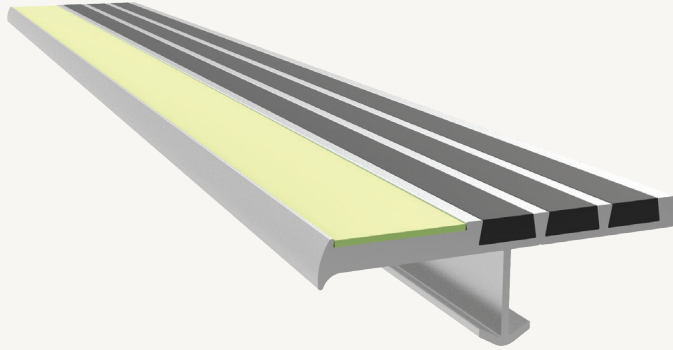


Safe-T-Lume[™]

STAIR TREAD + NOSING

Safe-T-Lume Ribbed Bar Abrasive Stair treads are an industry leading glow-in-the-dark option. These treads are perfect for indoor and outdoor applications such as stadiums and parking garages.



STSM-P3E
shown



FEATURES

BRIGHTNESS The embedded glow-in-the-dark photoluminescent material provides needed illumination for a safe exit. Choose between an embedded resin strip with superior glow or abrasive grit strip that exceeds code requirements.

DURABILITY The stair treads and nosings are long-lasting. They are designed with materials that last, like extruded aluminum, abrasive grit and EcoTread.

INSTALLATION EASE Installation and maintenance manuals are available at www.nystrom.com.

DETAILS

MATERIAL Extruded Aluminum, Abrasive Grit or EcoTread[™], and 53 mil Resin or 21 mil Abrasive Grit Insert

COLOR Photoluminescent strip and optional tread colors

APPLICATION Poured Concrete, Steel Pan, or Wood

TREAD Ribbed Abrasive or EcoTread

WIDTH 3 inches

LENGTH Up to 12 linear feet

MOUNTING Anchor or Drilled Hole, Mech. Fastened

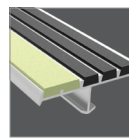
NOSING Short-Tipped

OPTIONS Stair Nosing Guards[™], Mitered Cuts, Painted Undersides or Taped Tops

CODE COMPLIANCE 2015/2018 IBC Section 1025, 2015/2018 IFC Section 1025

TEST STANDARD ASTM 2072, UL 1994

NOSING



Short-Tipped

INSERT

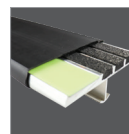


Resin Strip

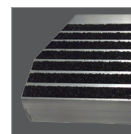


Abrasive Grit Strip

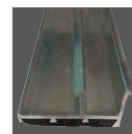
OPTIONS



Stair Nosing Guards[™]



Painted Undersides



Painted Undersides



Taped Tops

MODELS

MODEL	WIDTH	INSERT	INSTALL
STSM-P3E	3"	Resin Strip	Cast-In, Extruded Anchor
STSM-P3D	3"		Drilled Hole, Mech. Fastened
STSM-P3E-T	3"	Abrasive Grit Strip	Cast-In, Extruded Anchor
STSM-P3D-T	3"		Drilled Hole, Mech. Fastened

ECOTREAD MODELS

MODEL	WIDTH	TREAD/INSERT	INSTALL
STSM-P3E-ECO	3"	EcoTread and Resin Strip	Cast-In, Extruded Anchor
STSM-P3D-ECO	3"		Drilled Hole, Mech. Fastened
STSM-P3E-T-ECO	3"	EcoTread and Abrasive Grit Strip	Cast-In, Extruded Anchor
STSM-P3D-T-ECO	3"		Drilled Hole, Mech. Fastened