

# Safety Grating

## FALL PROTECTION

Nystrom's OSHA compliant Safety Grating provides permanent fall protection. Designed with a 6 inch side access and featuring positive locking in both open and closed positions. The grate includes a padlock hasp and two nut rails. It is available as a factory installed option with most floor door styles.

### DETAILS

**LOAD** 300psf live load

**MATERIAL** Aluminum: extruded, 6 inch by 1/4 inch serrated plate, powder coat

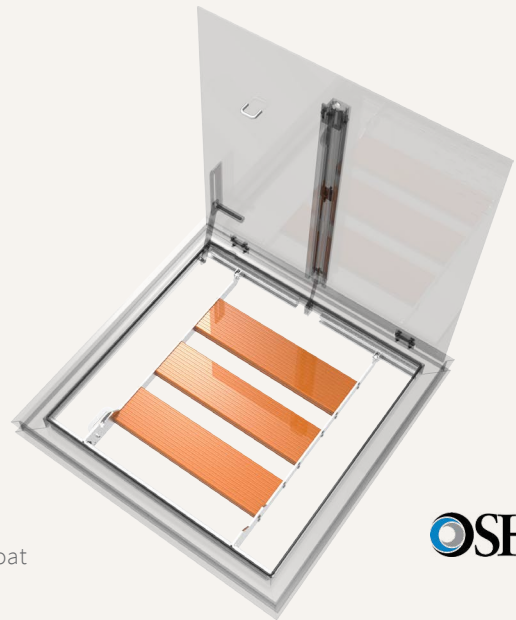
**HOLD OPEN LATCH** Stainless steel with padlock hasp

**COMPLIANCE** OSHA 29 CFR1926.502(c)

*Plastic fiber reinforced option available, call for more information.*

### ORDER GUIDE

MODEL
-SGT



# Safety Nets

## FALL PROTECTION

Nystrom's Safety Net is designed to be installed in floor door openings to reduce risks associated with falls. The safety net easily slides on guide rails to facilitate entry and then repositioned to prevent fall through.

### DETAILS

**LOAD** 5000 lb breaking strength

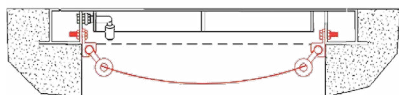
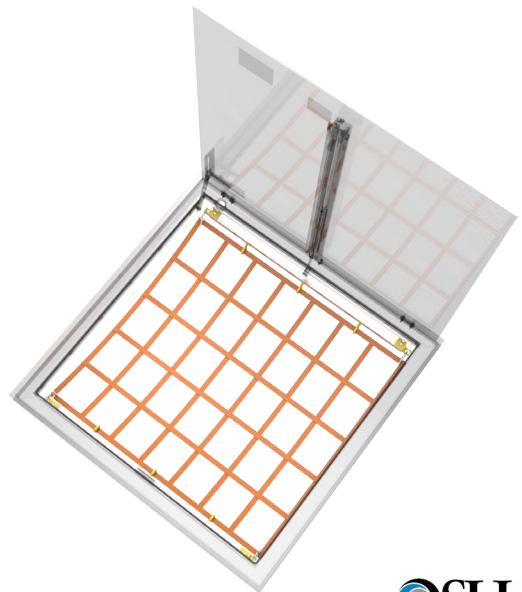
#### MATERIAL

- Rail: Aluminum 6061 T6
- Netting: Nylon webbing
- Rings: Aluminum alloy

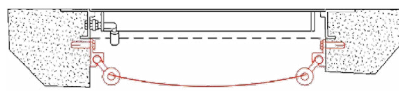
#### INSTALLATION

- Drainable Frame: 1/2 inch nuts and bolts
- Retrofit or Non-Drainable Frame: 1/2 inch wedge-style concrete anchors

**COMPLIANCE** OSHA 29 CFR1926.502(c)



*Drainable Frame Only  
Installed in Gutter Channel*



*Retrofit or Non-Drainable Frame  
Installed below frame, in wall of floor opening*

### ORDER GUIDE

MODEL	MATERIAL	WIDTH	X	LENGTH	INSTALL
SN			X		-
	<b>A</b> Aluminum	Standard Sizes (W x L)			<b>R</b> Retrofit
	<b>S</b> Stainless Steel	36" x 30"	48" x 60"		
		48" x 48"			