

## Ladder Safety Post

Model(s): SPY/SPG/SPA/SPS

### GENERAL DESCRIPTION



Safety Posts provide easier, safer fixed ladder access through roof hatches and floor door. The telescoping post permanently mounts to the top two rungs of any fixed ladder. It provides a positive hand-hold to assist personnel as they enter or exit an opening in an upright and balanced position. The following are general instructions for installing, operating and maintaining Safety Posts. These are recommended general guidelines only. Locally accepted installation practices and procedures should be followed to ensure a safe egress system that meets all local code requirements, including Occupational Safety & Health Administration (OSHA) and International Building Code (IBC).

### Introduction + Safety

Please read the complete instructions carefully before beginning any work. To ensure proper installation and performance of the Safety Railing the following actions must be completed by the installing contractor. Failure to do so will affect product warranty.

**GENERAL SAFETY PRECAUTIONS** Improper selection, installation, or use can cause personal injury or property damage. It is solely the responsibility of the user, through its own analysis to select products suitable for their specific application requirements, ensure they are properly maintained, and limit their use to its intended purpose. Follow proper local, state and federal regulations for proper installation and operation requirements.

### Transportation + Storage

- Inspect all shipments and materials for missing or damaged components and hardware.
- Railings may ship in multiple boxes, depending on its size and exit configuration. To help keep systems together, the boxes will come banded together that form a full system.
- Material must be stored in a clean, dry location.

## Preparation

ITEM NO.	DESCRIPTION	QTY
1	Lifting handle	1
2	Release Assembly with Handle	1
3	Extend Position Locking Bracket	1
4	Constant Force Balancing Spring	1
5	Square Tubing - 1.5"	1
6	Square Tubing - 2"	1
7	Mounting Channel	1
8	SST Mounting Brackets and Hardware	2

### Tools

- Level
- Marking tool Drill
- 7/16" drill bit (if attaching directly to ladder riser)
- 9/16" socket

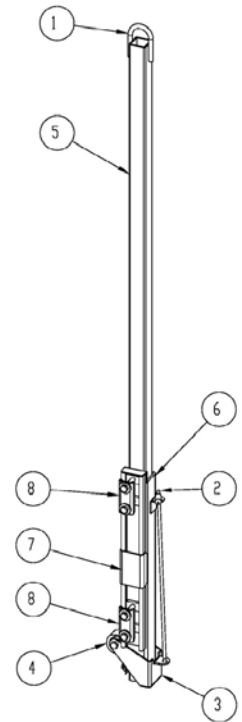


Figure 1

## INSTALLATION

### Attachment to Ladder

Note: Two people are recommended when installing the safety post on a ladder that is already mounted to the wall.

1. Place the post on the wall side of the ladder. *Figure 2*
2. Attach to two rungs as indicated in *Figure 2*.
3. Tighten bolts

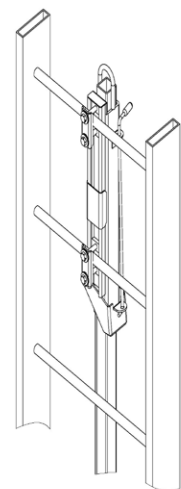


Figure 2

### Attachment to ¾" to 1" Diameter Rung

1. Requires the mounting bracket positioned with flanges toward the ladder rung as shown in figure below. Use washers under heads of bolts (Figure 3).

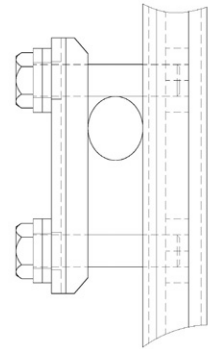


Figure 3

### Attachment 1-1/4" Diameter Rung

1. Attachment to 1-1/4" diameter rungs requires the mounting bracket reverse positioned with flanges away from the ladder rung as shown in Figure 4.
2. Larger rungs (such as 2-1/4" serrated treads) will require longer bolts. Washers are not necessary.

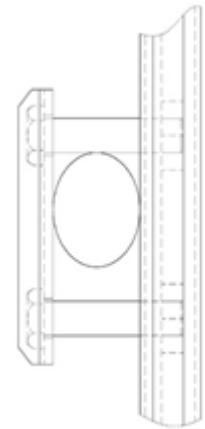


Figure 4

### Attachment to Ladder Riser:

1. Safety Post may be mounted on one of the ladder risers by drilling 7/16" holes in the ladder riser and bolting through as shown in Figure 5.

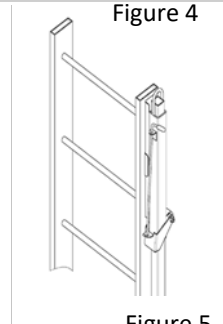


Figure 5

### Attachment to Precast Steps:

1. Where rungs are installed in precast concrete and risers are too narrow to permit center mounting, attach safety post to rungs as shown in Figure 6.

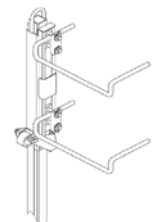


Figure 6

### OPERATION:

Raise safety post to the fully extended and locked position. The locking bracket automatically engages to securely hold the safety post in place. To lower, lift the red release handle to disengage the locking bracket.

### MAINTENANCE:

Assure that all fasteners are tight. It is recommended that the spring be lubricated once a year to preserve the spring, and that all fasteners are tightened securely.

### QUESTIONS?

For more information on installation, repair or replacement, please visit [www.Nystrom.com](http://www.Nystrom.com) or call (800) 547-2635.